

NOTES:

- 1 SCREW AND WASHER TO BE SHIPPED UNASSEMBLED IN A SEPARATE BAG.
- 2 ALL TORQUE TESTING MUST BE PERFORMED WITH A .038 / 0.97 MINIMUM THICK SPACER BETWEEN THE SCREW HEAD AND TERMINAL BODY.
- 3 TORQUE REQUIREMENTS: THE THREADS OF BOTH THE POWER TERMINAL AND THE BRASS SCREW SUPPLIED WILL WITHSTAND 8 IN.-LBS. MINIMUM OF TIGHTENING TORQUE WITHOUT DAMAGE, WHEN A WASHER WITH A MINIMUM THICKNESS OF .038 / 0.97 (AS SUPPLIED) IS INSTALLED BETWEEN THE SCREW HEAD AND THE POWER TERMINAL BODY.
- 4 NO PLATING ON EDGES SHOWN.
- 5 C-Press® CONTACT PLATED THRU HOLE REQUIREMENTS PER DRAWING 27331.
6. WHEN NO WASHER / SPACER OR TERMINAL LUG IS INSTALLED, THE THREADS OF THE POWER TERMINAL WILL WITHSTAND A MAXIMUM TIGHTENING TORQUE OF 6 IN.-LBS.

SPECIFICATIONS

MATERIALS

Insulator ————— Nylon, UL 94V-0 Rated,  
Color: Natural

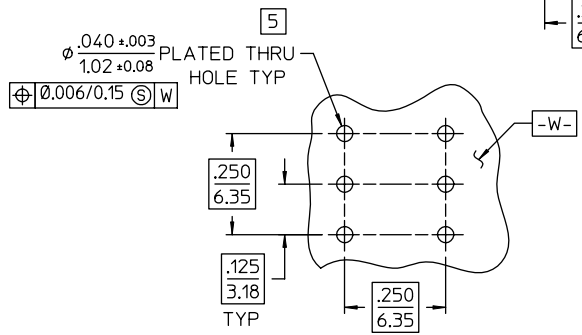
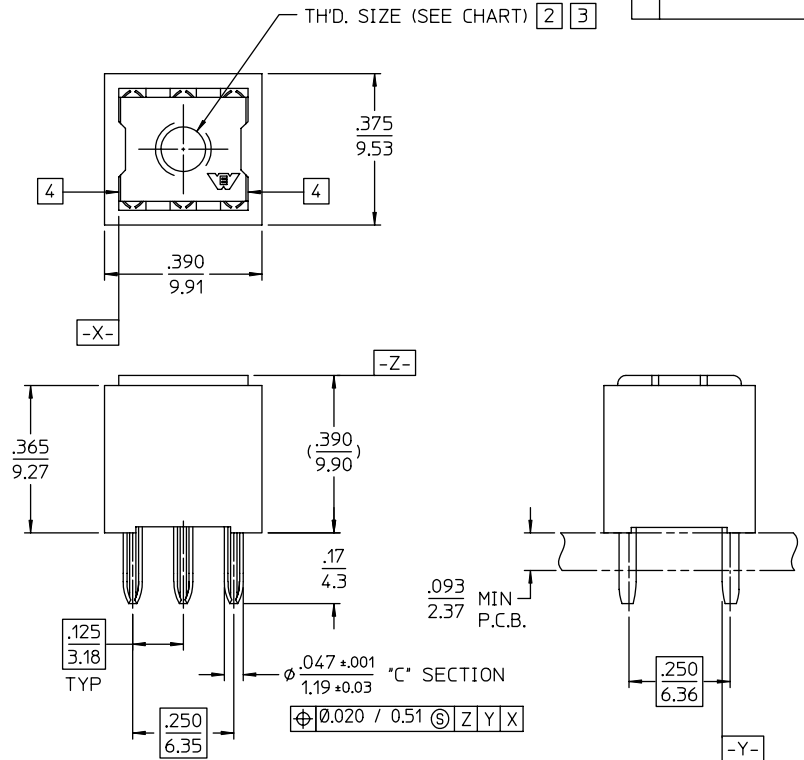
Power Terminal ————— Copper-Nickel-Tin Alloy, CDA 72500  
Finish: SEE CHART  
except per note 4

- 1 2 3 Screw (Not Shown) ————— Brass (SEE CHART)
- 1 2 3 Washer (Not Shown) ————— Brass (SEE CHART)

PERFORMANCE CHARACTERISTICS

- Insulation resistance ————— 5000 megohms min.
- Current rating, 6 Pin ————— 18 amp. @ 30°C rise
- Operating temperature range ————— -55°C to +105°C
- C-Press® Performance:
- Maximum insertion force, 6 Pin ————— 240 lbs. max.
  - Minimum retention force, 6 Pin ————— 48 lbs. min.
  - Number of repair cycles without hole deformation or performance loss ————— 3
  - Contact to PTH electrical resistance — 2 milliohms max.

REV	DESCRIPTION	BY DATE	APPD
J	REVISED PER ECR8697	CMR 10/07/05	V.B.H.



P.C. BOARD HOLE PATTERN

121-27296-2 SHOWN

1 2 3	CATALOG NO	DESCRIPTION	INSERTION TOOL	REMOVAL TOOL	PLATING
1 2 3	121-27296-04-260	#6-32 UNC-2B THREAD, WITH #6-32 UNC-2A SCREW AND .22 / 5.6 O.D. X .038 / 0.97 MIN. THK. WASHER		107-42503	PURE TIN (RoHS)
1 2 3	121-27296-3	#4-40 UNC-2B THREAD, WITH #4-40 UNC-2A SCREW AND .19 / 4.8 O.D. X .038 / 0.97 MIN. THK. WASHER	107-42677	107-42678	TIN LEAD
	121-27296-2	#6-32 UNC-2B THREAD, WITHOUT SCREW		107-42503	
	121-27296-1	#4-40 UNC-2B THREAD, WITHOUT SCREW		107-42678	

121 SERIES

PER ASME Y14.5M-1994 UNLESS OTHERWISE SPECIFIED: DIMENSIONS ARE IN INCHES OR INCHES/MM

TOLERANCES:  
DECIMALS: .XX ± .01 / 0.3  
.XXX ± .005 / 0.13  
ANGLES: ± SCALE 4:1

**NORTHROP GRUMMAN**  
Winchester Electronics  
82 Barnes Industrial Road North  
Wallingford, CT 06492

**CUSTOMER DRAWING**

DATE 07/16/85 APPROVED JAD DATE 08/09/85

DATE 08/12/85 APPROVED JAD

TITLE  
POWER TERMINAL WITH INSULATOR  
.125 X .250 GRID - 6 PIN

27296 SHT. 1 OF 1 REV. J

June 2006 - This drawing became the property of Winchester Electronics Corporation, Wallingford, CT.