

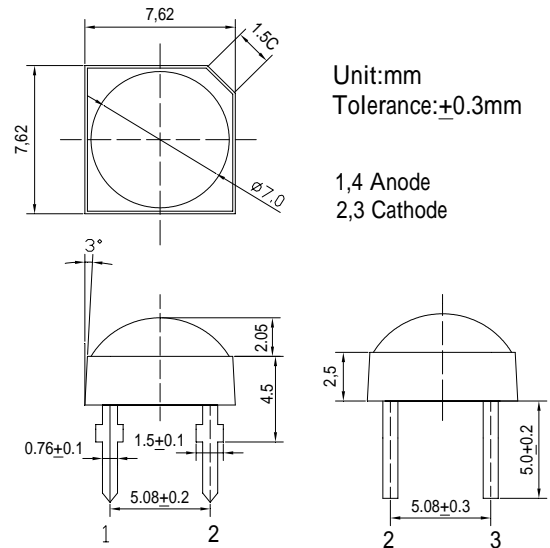
■Features

- High Luminous Super Flux Output
- Superior Weather-resistance
- UV Resistant Epoxy
- Long Lifetime Operation
- Water Clear Type

■Applications

- General Purpose Indicators
- Small Area Illuminations
- Back Lighting
- Other Lighting

■Outline Dimension



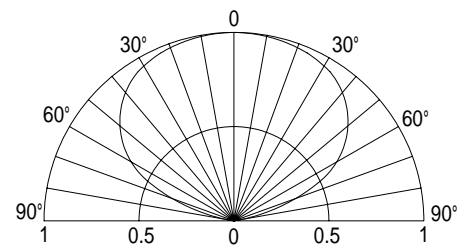
■Absolute Maximum Rating

(Ta=25 °C)

| Item | Symbol | Value | Unit |
|----------------------------|-----------------|------------|------|
| DC Forward Current | I _F | 30 | mA |
| Pulse Forward Current* | I _{FP} | 100 | mA |
| Reverse Voltage | V _R | 5 | V |
| Power Dissipation | P _D | 114 | mW |
| Operating Temperature | Topr | -30 ~ +85 | |
| Storage Temperature | Tstg | -40 ~ +100 | |
| Lead Soldering Temperature | Tsol | 260 / 5sec | - |

*Pulse width Max.10ms , Duty ratio max 1/10

■Directivity



Electrical -Optical Characteristics

(Ta=25 °C)

| Item | Symbol | Condition | Min. | Typ. | Max. | Unit |
|---------------------------|-------------------|----------------------|------|------|------|------|
| DC Forward Voltage | V _F | I _F =30mA | 2.9 | 3.2 | 3.8 | V |
| DC Reverse Current | I _R | V _R =5V | - | - | 10 | μA |
| Luminous Flux* | ϕ _v | I _F =30mA | 9 | 11 | - | lm |
| Luminous Intensity* | I _v | I _F =30mA | 2180 | 3000 | - | mcd |
| Color Temperature | CCT | I _F =30mA | - | 6500 | - | K |
| Chromaticity Coordinates* | x | I _F =30mA | - | 0.31 | - | |
| | y | I _F =30mA | - | 0.33 | - | |
| 50% Power Angle | 2θ _{1/2} | I _F =30mA | - | 130 | - | deg |

*1 Tolerance of chromaticity coordinates is ±10%

*2 Tolerance of luminous intensity is ±15%