

# Customer Information Sheet

DRAWING No.: M50-480XX45

SHEET 2 OF 2

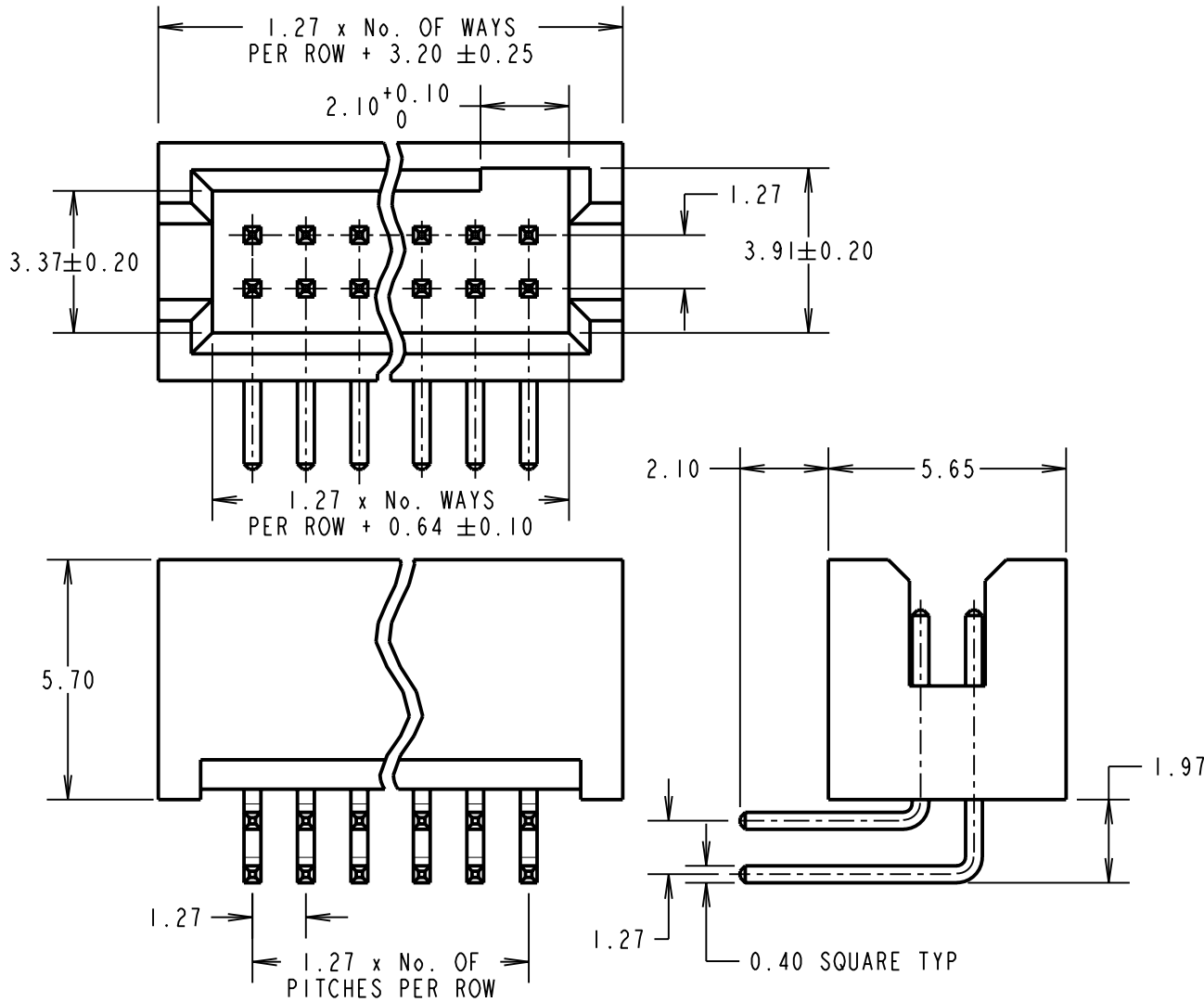
IF IN DOUBT - ASK

©

NOT TO SCALE

THIRD ANGLE PROJECTION

ALL DIMENSIONS IN mm



NOTES:

1. RECOMMENDED PCB HOLE SIZE =  $\varnothing 0.65 \pm 0.10$ mm.
2. TOLERANCE =  $\pm 0.15$  UNLESS OTHERWISE STATED.

SPECIFICATIONS:

MATERIAL:  
 MOULDING = NYLON 6T UL94V-0, BLACK  
 CONTACT = COPPER ALLOY  
 FINISH:  
 CONTACT = GOLD  
 ELECTRICAL:  
 CURRENT RATING = 1A  
 VOLTAGE PROOF = 300V AC/DC  
 CONTACT RESISTANCE = 20 MILLIOHMS MAX  
 INSULATION RESISTANCE = 1,000 MEGOHMS MIN  
 ENVIRONMENTAL:  
 OPERATING TEMPERATURE = -40°C TO +105°C  
 PACKING:  
 TUBE  
 FOR COMPLETE SPECIFICATION, SEE COMPONENT  
 SPECIFICATION C029XX (LATEST ISSUE)

ORDER CODE:  
**M50-480XX45**  
 No. WAYS PER ROW ———  
 05 TO 40  
 FINISH: GOLD ———

CP	6	10.12.09	10601
NAME	ISS.	DATE	C/NOTE
APPROVED: C.PENROSE			
CHECKED: R.ADDE			
DRAWN: J. ENRIGHT			
CUSTOMER REF.:			
ASSEMBLY DRG:			

**HARWIN**

HARWIN USA  
 TEL: 603 893 5376  
 FAX: 603 893 5396  
 mis@harwin.com

HARWIN Europe (UK)  
 TEL: 023 9231 4545  
 FAX: 023 9231 4590  
 mis@harwin.co.uk

HARWIN Asia  
 TEL: +65 6 779 4909  
 FAX: +65 6 779 3868  
 mis@harwin.com.sg

THIS DRAWING AND ANY  
 INFORMATION OR DESCRIPTIVE  
 MATTER SET OUT HEREON ARE  
 CONFIDENTIAL AND COPYRIGHT  
 PROPERTY OF THE HARWIN  
 GROUP AND MUST NOT BE  
 DISCLOSED, LOANED, COPIED  
 OR USED FOR MANUFACTURING,  
 TENDERING OR FOR ANY  
 OTHER PURPOSE WITHOUT  
 THEIR WRITTEN PERMISSION.

~~TOLERANCES~~  
~~X = ±1mm~~  
~~X.X = ±0.25mm~~  
~~X.XX = ±0.10mm~~  
~~X.XXX = ±0.01mm~~  
~~ANGLES = ±5°~~  
 UNLESS STATED

MATERIAL:  
 SEE ABOVE  
 FINISH: SEE ABOVE  
 S/AREA: mm<sup>2</sup>

TITLE:  
 1.27mm PITCH DIL  
 HORIZONTAL PIN HEADER ASSY  
 DRAWING NUMBER:  
**M50-480XX45**  
 SHT  
 2 OF 2