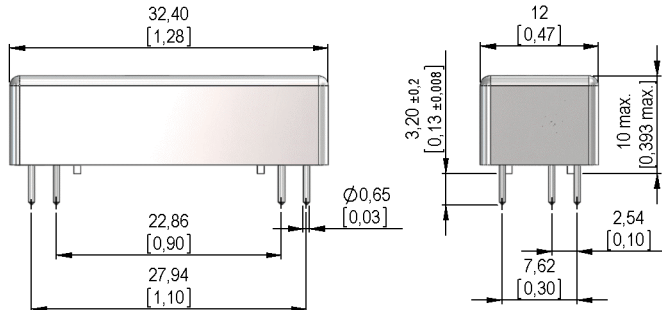


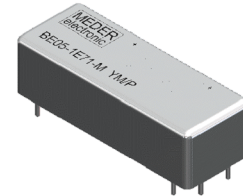
Dimensions mm[inch]

tolerances acc. to DIN ISO 2768-m
 Toleranzen gem. DIN ISO 2768-m



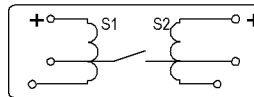
Isometric

Scale 1:1
 Maßstab 1:1



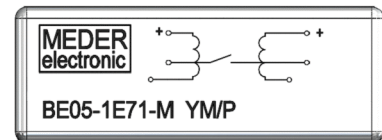
Layout

Top view
 Draufsicht



Marking

according to EN60062/factory code
 gem. EN60062/Fertigungsstätte



- 1- Coil polarity must be observed.
- 2- the contact is closed by application of a positive pulse ($>=2$ ms) connected to S1 and opens by a negativ pulse connected to S2.
- 1- Die Polarität der Spule muß beachtet werden.
- 2- Der bistabile Kontakt schließt durch ein positiven Impuls auf S1 und öffnet durch ein negativen Impuls auf S2

Coil Data at 20 °C	Conditions	Min	Typ	Max	Unit
Coil resistance S1		765	850	935	Ohm
Coil resistance S2		765	850	935	Ohm
Coil voltage			5		VDC
Rated power			29		mW
Thermal resistance	max. Relay temperature = operating temperature + self heating		56		K/W
Pull-In voltage		0,8		3,8	VDC
Drop-Out voltage		0,8		3,8	VDC

Contact data 66	Conditions	Min	Typ	Max	Unit
Contact rating	Any DC combination of V & A not to exceed their individual max.'s			10	W
Switching voltage (<21 AT)	DC or Peak AC			180	V
Switching voltage (>20 AT)	DC or Peak AC			200	V
Switching current	DC or Peak AC			0,5	A
Carry current	DC or Peak AC			1,25	A
Contact resistance static	Measured with 40% overdrive Start Value			150	mOhm
Insulation resistance	RH <45 %, 100 VDC test voltage	10			GOhm
Breakdown voltage (<21 AT)	according to IEC 255-5	200			VDC
Operate time incl. bounce	measured with 40% overdrive			0,5	ms
Release time	measured with no coil excitation			0,1	ms
Capacitance	@ 10 kHz across open switch		0,2		pF

Special Product Data	Conditions	Min	Typ	Max	Unit
Number of contacts			1		
Contact - form			E - bistable NO		
Dielectric Strength Coil/Contact	according to IEC 255-5	2			kV AC
Insulation resistance Coil/Contact	RH <45%, 200 VDC measuring voltage	1			TOhm
Case color			silver metallic		
Housing material			Metal		
Sealing compound			Polyurethan		
Connection pins			cu-alloy tinned		
Reach / RoHS conformity			yes		



Products for tomorrow...

Europe: +49 / 7731 8399 0 | Email: info@meder.com
USA: +1 / 508 295 0771 | Email: salesusa@meder.com
Asia: +852 / 2955 1682 | Email: salesasia@meder.com

Item No.:
8805171700
Item:
BE05-1E66-M
BE05-1E71-M

Environmental data	Conditions	Min	Typ	Max	Unit
Shock	1/2 sine, duration 11ms, in 3 axis			50	g
Vibration	from 10 - 2000 Hz			20	g
Operating temperature		-40		85	°C
Storage temperature		-55		125	°C
Soldering temperature	wave soldering max. 5 sec.			260	°C
Washability		fully sealed			

General data	Conditions	Min	Typ	Max	Unit
Total weight			7,5		g
Packaging		plastic tube 39 pcs./each			

Modifications in the sense of technical progress are reserved

Designed at: 02.12.10 Designed by: WKOVACS
Last Change at: Last Change by:

Approval at: 16.02.11 Approval by: CRUF
Approval at: Approval by:

Version: 03