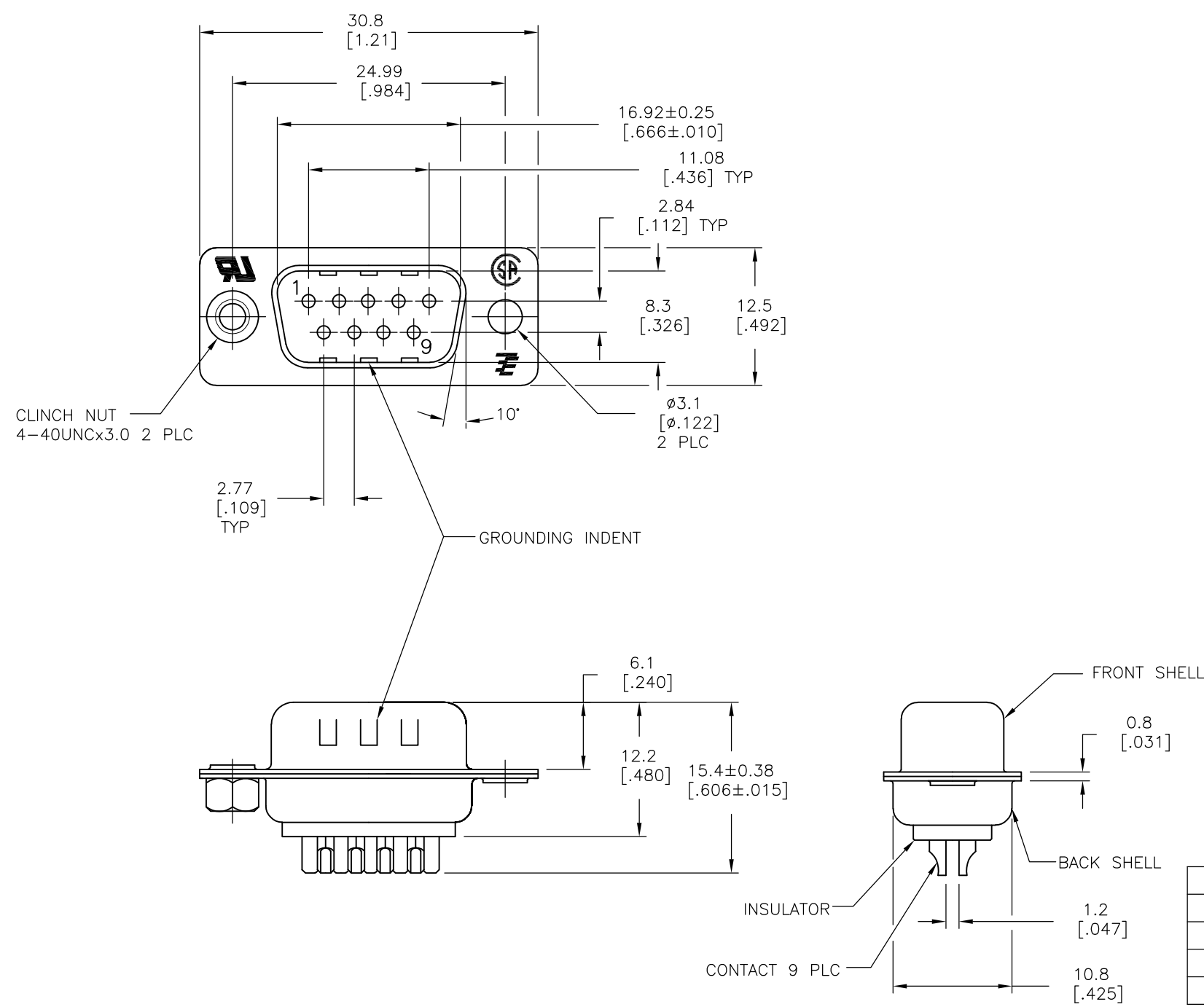


THIS DRAWING IS UNPUBLISHED. RELEASED FOR PUBLICATION  
 © COPYRIGHT BY TYCO ELECTRONICS CORPORATION. ALL INTERNATIONAL RIGHTS RESERVED.

LOC	DIST	REVISIONS					
BD	00	P	LTR	DESCRIPTION	DATE	DWN	APVD
			U1	REVISED PER ECO-09-013374	04JUN09	HMR	JO



- 1 MATERIAL:  
 FRONT INSULATOR: PBT, 30 %GF, UL94V-0, BLACK COLOR  
 BACK INSULATOR: PBT, 30 %GF, UL94V-0, BLACK COLOR  
 CONTACT: BRASS  
 FRONT SHELL: STEEL  
 BACK SHELL: STEEL  
 CLINCH NUTS: BRASS
- 2 FINISH:  
 CONTACT: GOLD PLATING 0.00002[.0000008] MIN ON CONTACT AREA 0.00229 [.000090] MIN TIN-LEAD PLATING ALL OVER 0.00127[.000050] MIN NICKEL
- 3 CONTACT: GOLD PLATING 0.00076[.000030] MIN ON CONTACT AREA 0.00229 [.000090] MIN TIN-LEAD PLATING ALL OVER 0.00127[.000050] MIN NICKEL
- 4 SHELL: TIN 0.0241[.000095] MIN FULL SHELL
- 5 SHELL: BLUE ZINC: 0.00508[.000200] - 0.00762[.000300] OVER ENTIRE SHELL
- 6 CONTACT: GOLD PLATING 0.00002[.0000008] MIN ON CONTACT AREA 0.00229 [.000090] MIN TIN-COPPER PLATING ALL OVER 0.00127[.000050] MIN NICKEL
- 7 CLINCH NUTS: NICKEL PLATING .00305-.00508[.000120-.000200]
- 8 SPECIFICATION  
 ELECTRICAL CHARACTERISTICS: CURRENT RATING: 3 AMPERES  
 DIELECTRIC WITHSTANDING VOLTAGE: AC 1000V r.m.s  
 INSULATION RESISTANCE: 5000 MEGOHMS MINIMUM AT DC 500V  
 CONTACT RESISTANCE: 10 MILLIOHMS MAXIMUM.
- 9 ROHS 2002/95/EC/COMPLIANT
- 10 PLUG ASSEMBLY MATES WITH ANY 9 POSITION RECEPTACLE IN AMPLIMITE SERIES.
- 11 SOLDER CUP WILL ACCOMODATE 20 AWG MAX WIRE
- 12 CONTACT: GOLD PLATING 0.00076[.000030] MIN ON CONTACT AREA 0.00229[.000090] MIN TIN-COPPER ALL OVER 0.00127[.000050] MIN NICKEL PLATING

9	STANDARD	NO	NO	6	5	5-747904-4
9	STANDARD	YES	YES	6	4	5-747904-8
9	STANDARD	NO	YES	12	4	5-747904-5
9	STANDARD	NO	YES	6	4	5-747904-2
9	STANDARD	NO	YES	6	4	747904-9
9	STANDARD	YES	YES	2	4	747904-8
9	STANDARD	NO	YES	3	4	747904-5
9	STANDARD	NO	NO	2	5	747904-4
9	STANDARD	NO	YES	2	4	747904-2

PACKAGING TYPE	7 CLINCH NUTS	GROUNDING INDENTS	CONTACTS	SHELLS	PART NO.																																																																						
<table border="1"> <tr> <td colspan="2">THIS DRAWING IS A CONTROLLED DOCUMENT.</td> <td>DWN</td> <td>M.BINNER</td> <td>03MAR03</td> <td rowspan="3"> </td> <td colspan="2">Tyco Electronics Corporation</td> </tr> <tr> <td colspan="2"></td> <td>CHK</td> <td>R.BENDORF</td> <td>05MAR03</td> <td colspan="2">Harrisburg, PA 17105-3608</td> </tr> <tr> <td colspan="2"></td> <td>APVD</td> <td>R.BENDORF</td> <td>05MAR03</td> <td colspan="2">NAME</td> </tr> <tr> <td colspan="2">DIMENSIONS: mm</td> <td colspan="2">TOLERANCES UNLESS OTHERWISE SPECIFIED:</td> <td colspan="2">PRODUCT SPEC</td> <td colspan="2">PLUG ASSY, SOLDER CUP, SIZE 1, 9 POSN, HD-20, AMPLIMITE</td> </tr> <tr> <td colspan="2"> <table border="1"> <tr> <td>0 PLC</td> <td>± -</td> </tr> <tr> <td>1 PLC</td> <td>± 0.25</td> </tr> <tr> <td>2 PLC</td> <td>± 0.13</td> </tr> <tr> <td>3 PLC</td> <td>± 0.05</td> </tr> <tr> <td>4 PLC</td> <td>± -</td> </tr> <tr> <td>ANGLES</td> <td>± 4°</td> </tr> </table> </td> <td colspan="2">APPLICATION SPEC</td> <td colspan="2">SIZE</td> <td>CAGE CODE</td> <td>DRAWING NO</td> <td>RESTRICTED TO</td> </tr> <tr> <td colspan="2">MATERIAL</td> <td colspan="2">FINISH</td> <td colspan="2">WEIGHT</td> <td colspan="2">A3 00779</td> <td>C-747904</td> </tr> <tr> <td colspan="2">1</td> <td colspan="2">SEE TABLE</td> <td colspan="2">CUSTOMER DRAWING</td> <td>SCALE</td> <td>2:1</td> <td>SHEET 1 OF 1</td> <td>REV U1</td> </tr> </table>						THIS DRAWING IS A CONTROLLED DOCUMENT.		DWN	M.BINNER	03MAR03		Tyco Electronics Corporation				CHK	R.BENDORF	05MAR03	Harrisburg, PA 17105-3608				APVD	R.BENDORF	05MAR03	NAME		DIMENSIONS: mm		TOLERANCES UNLESS OTHERWISE SPECIFIED:		PRODUCT SPEC		PLUG ASSY, SOLDER CUP, SIZE 1, 9 POSN, HD-20, AMPLIMITE		<table border="1"> <tr> <td>0 PLC</td> <td>± -</td> </tr> <tr> <td>1 PLC</td> <td>± 0.25</td> </tr> <tr> <td>2 PLC</td> <td>± 0.13</td> </tr> <tr> <td>3 PLC</td> <td>± 0.05</td> </tr> <tr> <td>4 PLC</td> <td>± -</td> </tr> <tr> <td>ANGLES</td> <td>± 4°</td> </tr> </table>		0 PLC	± -	1 PLC	± 0.25	2 PLC	± 0.13	3 PLC	± 0.05	4 PLC	± -	ANGLES	± 4°	APPLICATION SPEC		SIZE		CAGE CODE	DRAWING NO	RESTRICTED TO	MATERIAL		FINISH		WEIGHT		A3 00779		C-747904	1		SEE TABLE		CUSTOMER DRAWING		SCALE	2:1	SHEET 1 OF 1	REV U1
THIS DRAWING IS A CONTROLLED DOCUMENT.		DWN	M.BINNER	03MAR03		Tyco Electronics Corporation																																																																					
		CHK	R.BENDORF	05MAR03		Harrisburg, PA 17105-3608																																																																					
		APVD	R.BENDORF	05MAR03		NAME																																																																					
DIMENSIONS: mm		TOLERANCES UNLESS OTHERWISE SPECIFIED:		PRODUCT SPEC		PLUG ASSY, SOLDER CUP, SIZE 1, 9 POSN, HD-20, AMPLIMITE																																																																					
<table border="1"> <tr> <td>0 PLC</td> <td>± -</td> </tr> <tr> <td>1 PLC</td> <td>± 0.25</td> </tr> <tr> <td>2 PLC</td> <td>± 0.13</td> </tr> <tr> <td>3 PLC</td> <td>± 0.05</td> </tr> <tr> <td>4 PLC</td> <td>± -</td> </tr> <tr> <td>ANGLES</td> <td>± 4°</td> </tr> </table>		0 PLC	± -	1 PLC	± 0.25	2 PLC	± 0.13	3 PLC	± 0.05	4 PLC	± -	ANGLES	± 4°	APPLICATION SPEC		SIZE		CAGE CODE	DRAWING NO	RESTRICTED TO																																																							
0 PLC	± -																																																																										
1 PLC	± 0.25																																																																										
2 PLC	± 0.13																																																																										
3 PLC	± 0.05																																																																										
4 PLC	± -																																																																										
ANGLES	± 4°																																																																										
MATERIAL		FINISH		WEIGHT		A3 00779		C-747904																																																																			
1		SEE TABLE		CUSTOMER DRAWING		SCALE	2:1	SHEET 1 OF 1	REV U1																																																																		