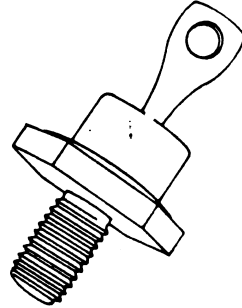


1N248C-50C
1N1195A-98A

Rectifier

Silicon
20 A Types



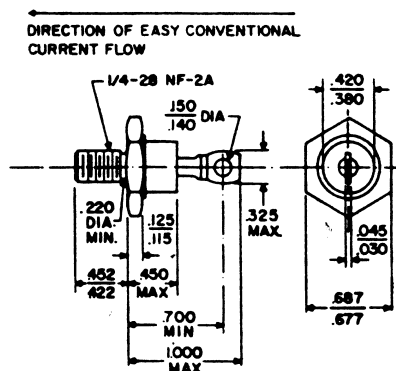
electrical ratings and specifications (60 cps, Resistive or Inductive Load)

	1N248C	1N249C	1N250C	1N1195A	1N1196A	1N1197A	1N1198A	
Max. Allow. Peak Reverse Voltage (Repetitive)*	55	110	220	300	400	500	600	Volts
Max. Allow. RMS Voltage	39	77	154	212	284	355	424	Volts
Max. Allow. DC Blocking Voltage**	50	100	200	300	400	500	600	Volts
Max. Allow. Forward Current (Single Phase or Three Phase - 150°C stud temp.)	←————— 20 Amp DC —————→							
Peak Recurrent Forward Current	←————— 90 Amp —————→							
Max. Allow. Peak One-Cycle Surge Current	←————— 350 Amp —————→							
Max. Full Load Voltage Drop (Full Cycle Average when operated at Max. I _{DC} and PRV)	←————— 0.6 Volts —————→							
Max. Leakage Current at Full Load (Single Phase, Full Cycle Average, 150°C stud temp.)	3.8	3.6	3.4	3.2	2.5	2.2	1.5	ma.
Junction Operating and Storage Temp. Range	←————— -65°C to +175°C —————→							
Maximum Stud Torque	30 inch-pounds.							

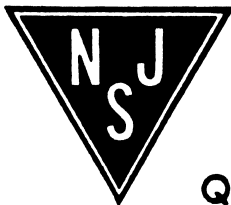
*Maximum voltages apply with a heat sink thermal resistance of 12°C/watt or less at maximum rated junction temperature.

**Maximum voltages apply with a heat sink thermal resistance of 5°C/watt or less at maximum rated junction temperature.

OUTLINE DRAWING



NOTES: (1) UNIT WEIGHT -.5 OZ.
 (2) MICA WASHER IN MOUNTING KIT MAY ADD APPROX. 2.5°C/WATT THERMAL RESISTANCE STUD TO HEATSINK



Quality Semi-Conductors

COMPLIES WITH
 EIA REGISTERED OUTLINE DO-5