

PLEASE CHECK WWW.MOLEX.COM FOR LATEST PART INFORMATION

Part Number: **5008121000**
Status: **Active**
Description: 3.00mm (.118") Pitch Mini-HMC™ Crimp Housing, Male, 2 Rows, 10 Circuits

Documents:

[3D Model](#) [Product Specification PS-500810-001 \(PDF\)](#)
[Drawing \(PDF\)](#) [RoHS Certificate of Compliance \(PDF\)](#)

Agency Certification

CSA LR19980
 UL E29179

General

Product Family I/O Connectors
 Series 500812
 Application Panel-Mount, Wire-to-Wire
 Component Type Housing
 Product Name Mini-HMC™
 Type N/A

Physical

Boot Color N/A
 Circuits (Loaded) N/A
 Circuits (maximum) 10
 Color - Resin Natural
 Durability (mating cycles max) 50
 Flammability 94V-0
 Gender Female
 Lock to Mating Part Yes
 Material - Plating Mating n/a
 Material - Resin Nylon
 Number of Rows 2
 Orientation Vertical
 PCB Locator No
 Packaging Type Bag
 Panel Mount Screws
 Pitch - Mating Interface (in) 0.118 In
 Pitch - Mating Interface (mm) 3.00 mm
 Polarized to Mating Part Yes
 Polarized to PCB N/A
 Ports 1
 Surface Mount Compatible (SMC) No
 Temperature Range - Operating -55°C to +105°C
 Termination Interface: Style N/A
 Waterproof / Dustproof No

Electrical

Current - Maximum per Contact 1.5A, 2.5A
 Shielded No
 Voltage - Maximum 250V AC (RMS)/DC

Material Info

Reference - Drawing Numbers

Product Specification PS-500810-001, RPS-500810-001



EU RoHS

**ELV and RoHS
Compliant**

REACH SVHC

Not Reviewed

Halogen-Free

Status

Not Halogen-Free

China RoHS



**Need more information on product
environmental compliance?**

Email productcompliance@molex.com
 For a multiple part number RoHS Certificate of
 Compliance, [click here](#)

Please visit the [Contact Us](#) section for any
 non-product compliance questions.

Search Parts in this Series

500812Series

Mates With

500813-1000

Use With

56118-8228 , 56118-8328 , 56119-8228 ,
 56119-8328 , 500810-0000 , 500810-0010

This document was generated on 04/13/2010

PLEASE CHECK WWW.MOLEX.COM FOR LATEST PART INFORMATION

DWG. NO.
SD-500812-001

F

D

V

C

B

DO NOT SCALE DRAWING

8

7

6

5

4

3

2

1

F

E

D

C

B

A

8

7

6

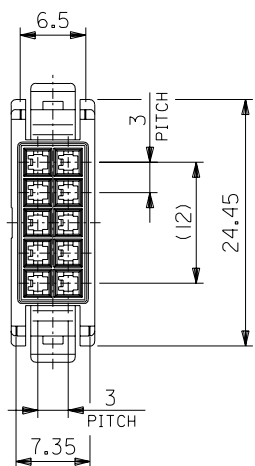
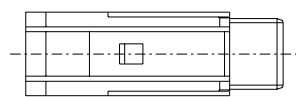
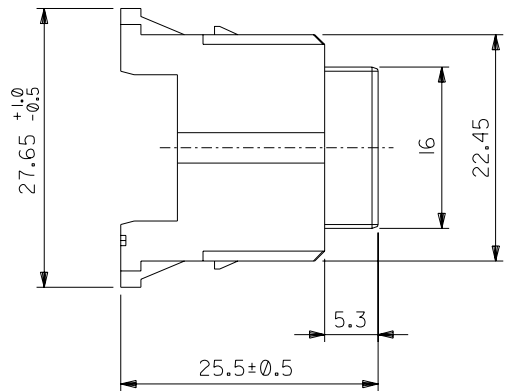
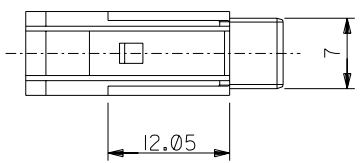
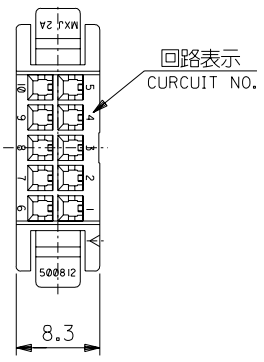
5

4

3

2

EN-02J(097) MXJ-54



注記:
NOTES.

1. 適用ターミナル : 56118-****/56119-****
APPLICABLE TERMINAL

500812-1000	500812-****
MATERIAL NO.	MODEL NO.

EC NO. DRWN: CHK: APPR:	EC NO. DRWN: CHK: APPR:	EC NO. DRWN: CHK: APPR:	REVISED '03/10/07	MATERIAL 材料 ガラス入り66ナイロン樹脂 UL94V-0 色:自然色(白) 66 NYLON G.F UL94V-0 COLOR : NATURAL(WHITE)	GENERAL TOLERANCES: (UNLESS SPECIFIED) 一般公差	SCALE	DESIGN UNITS <input checked="" type="checkbox"/> mm <input type="checkbox"/> INCH	THIRD ANGLE PROJECTION	DIMENSIONS: <input type="checkbox"/> mm <input type="checkbox"/> INCH <input checked="" type="checkbox"/> mm ONLY	SHT	REV
			EC NO. J2004-0781 DRWN: S.AKIYAMA CHK: N.MATSUURA APPR: YO.ITO								
A	0		RELEASED '03/07/02 EC NO. J2004-0013 DRWN: S.AKIYAMA CHK: J.MIYAZAWA APPR: YO.ITO	WIRE RANGE 適用線径範囲	ANGLE 角度						
				INS. RANGE 被覆外径							

MOLEX INCORPORATED

MATERIAL NO. SEE CHART DRAWING NO. SD-500812-001 SHEET NO. 1 OF 1

THIS DRAWING CONTAINS INFORMATION THAT IS PROPRIETARY TO MOLEX INCORPORATED AND SHOULD NOT BE USED WITHOUT WRITTEN PERMISSION. SIZE B