

UPDATED 12/15/2004

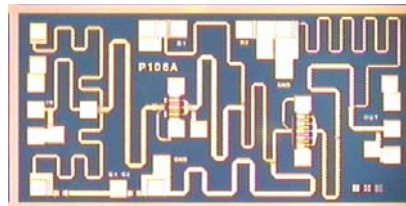
5.0 – 6.4 GHz Power Amplifier MMIC

FEATURES

- 5.0 – 6.4 GHz Operating Frequency Range
- 23.5dBm Output Power at 1dB Compression
- 20.0 dB Typical Small Signal Gain
- -41dBc OIMD3 @Each Tone Pout 13 dBm

APPLICATIONS

- Point-to-point and point-to-multipoint radio
- Military Radar Systems



Dimension: 1130um X 2250um
Thickness: 85um ± 15um



Caution! ESD sensitive device.

ELECTRICAL CHARACTERISTICS

(Tb = 25 °C, 50 ohm, Vds = 7 V, Idsq = 200 mA, Unless Otherwise Specified)

SYMBOL	PARAMETER/TEST CONDITIONS	MIN	TYP	MAX	UNITS
F	Operating Frequency Range	5.0		6.4	GHz
P1dB	Output Power at 1dB Gain Compression	22.5	23.5		dBm
Gss	Small Signal Gain	17.0	20.0		dB
OIMD3	Output 3 rd Order Intermodulation Distortion @Δf=10MHz, Each Tone Pout 13dBm, 7V, 60%±10%Idss		-41	-38	dBc
Input RL	Input Return Loss		-12	-8	dB
Output RL	Output Return Loss		-6		dB
Idss	Saturated Drain Current Vds =3V, VGS =0V	245	285	330	mA
Vds	Drain to Source Voltage		7	8	V
NF	Noise Figure @6GHz		8		dB
Rth	Thermal Resistance (Au-Sn Eutectic Attach)		44		°C/W
Tb	Operating Base Plate Temperature	- 35		+ 85	°C

MAXIMUM RATINGS AT 25°C^{1,2}

SYMBOL	CHARACTERISTIC	ABSOLUTE	CONTINUOUS
Vds	Drain to Source Voltage	12V	8 V
VGS	Gate to Source Voltage	-8V	- 4 V
Ids	Drain Current	Idss	325mA
IGSF	Forward Gate Current	28mA	4.5 mA
PIN	Input Power	21dBm	@ 3dB compression
TCH	Channel Temperature	175°C	150°C
TSTG	Storage Temperature	-65/175°C	-65/150°C
PT	Total Power Dissipation	3.1W	2.6W

1. Operating the device beyond any of the above rating may result in permanent damage.

2. Bias conditions must also satisfy the following equation $V_{ds} \cdot I_{ds} < (T_{CH} - T_b) / R_{TH}$

Specifications are subject to change without notice.

Excelics Semiconductor, Inc. 310 De Guigne Drive, Sunnyvale, CA 94085

Phone: 408-737-1711 Fax: 408-737-1868 Web: www.excelics.com

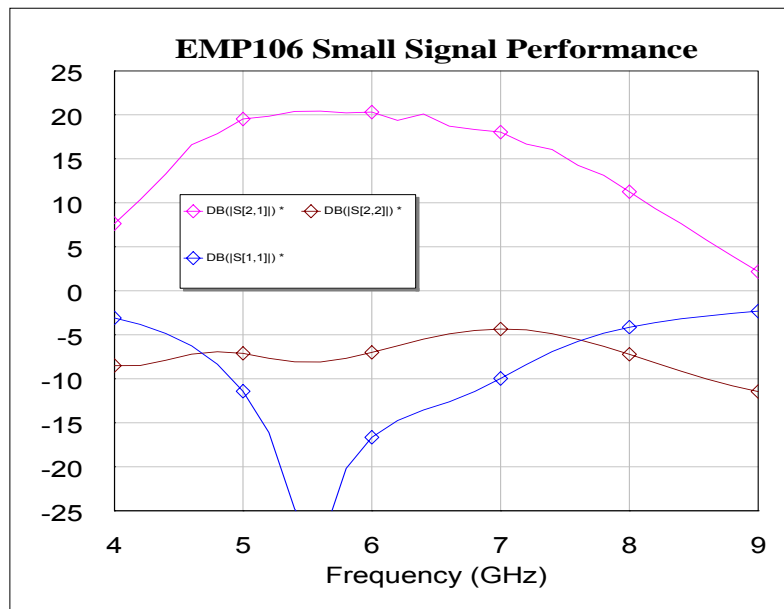
page 1 of 3

Revised December 2004

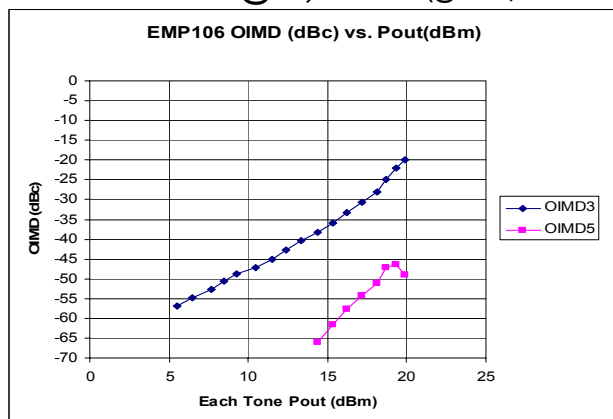
UPDATED 12/15/2004

Typical Performance:

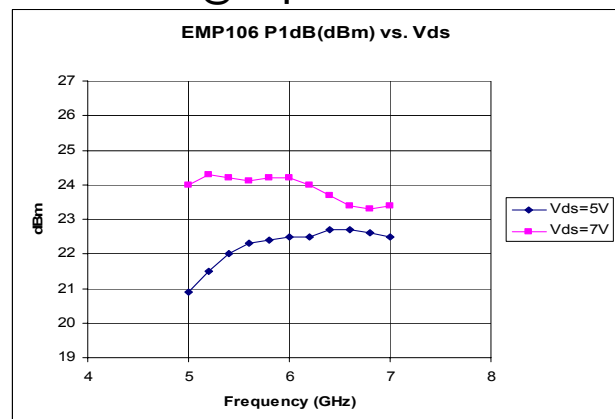
1. Small Signal Performance (@7V, 200mA)



2. OIMD VS Pout @7V, 200mA (@6GHz, Δf=10MHz)



3. P-1 VS Vds @I_{dsq}=200mA



APPLICATION INFORMATION (CAUTION: THIS IS AN ESD SENSITIVE DEVICE)

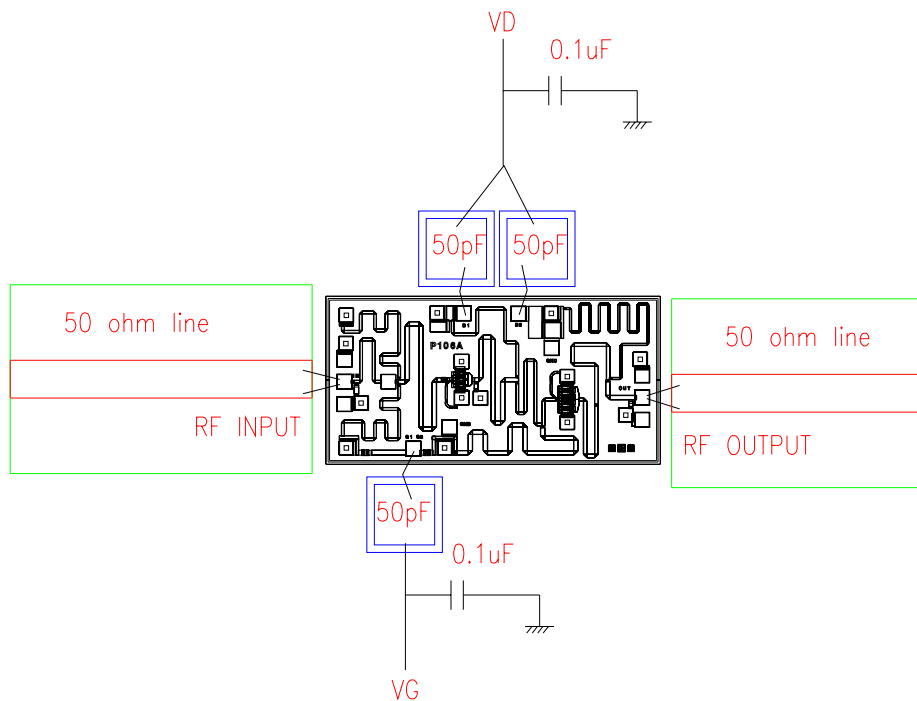
Chip carrier should match GaAs thermal coefficient of expansion and have high thermal conductivity, such as copper tungsten or copper molybdenum. The chip carrier should be nickel-gold plated and capable of withstanding 325°C for 20 minutes.

Die attach should be done with Gold/Tin (80/20) eutectic alloy in inert ambient gas. The backside is used as heatsinking, DC, and RF contacts.

All die attach and wire bond equipment, especially the tools which touch a die, should be well grounded to avoid accidental discharge through a die.

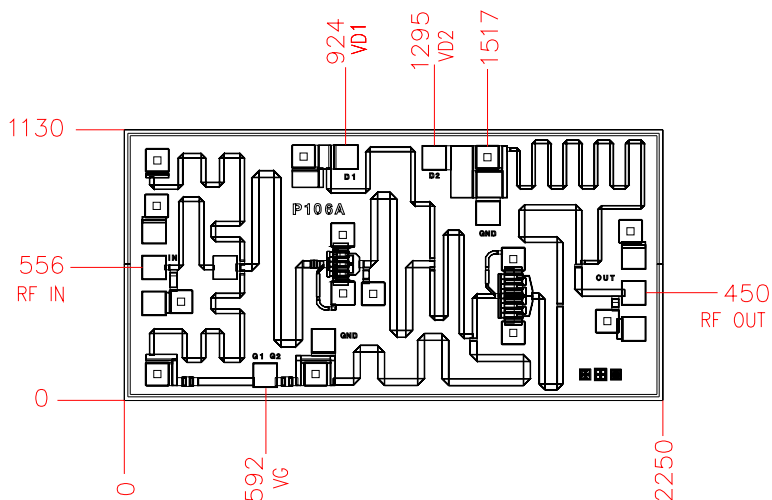
Specifications are subject to change without notice.

ASSEMBLY DRAWING



The length of RF wires should be as short as possible. Use at least two wires between RF pad and 50 ohm line and separate the wires to minimize the mutual inductance.

CHIP OUTLINE



Chip 1130um X 2250 microns
 Chip Thickness: 85 ± 15 microns
 PAD Dimensions: 100 x 100 microns
 All Dimensions in Microns

Specifications are subject to change without notice.