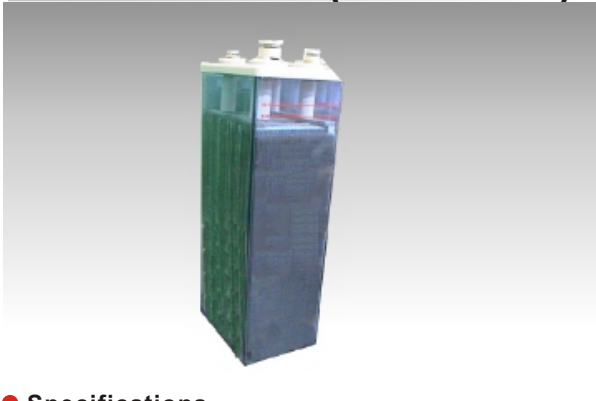




8 OPzS 800(2V800AH)



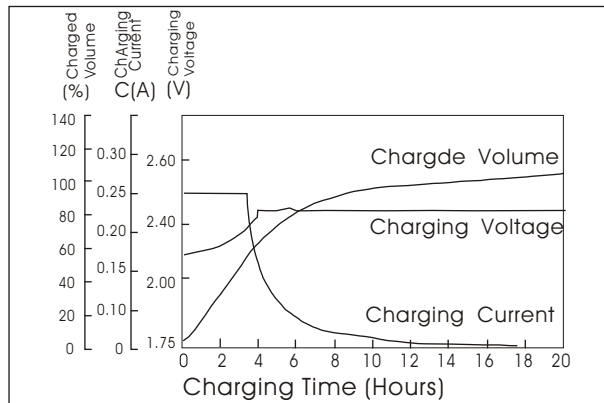
Specifications

Nominal Voltage	2 V	
Rated capacity (10 hour rate)	800Ah	
Dimensions	Total Height	722 mm (28.43 inches)
	Height	646mm (25.43inches)
	Length	191mm(7.52inches)
	Width	210 mm (8.27inches)
Weight Approx (dry weight)	64Kg (140.8lbs)	

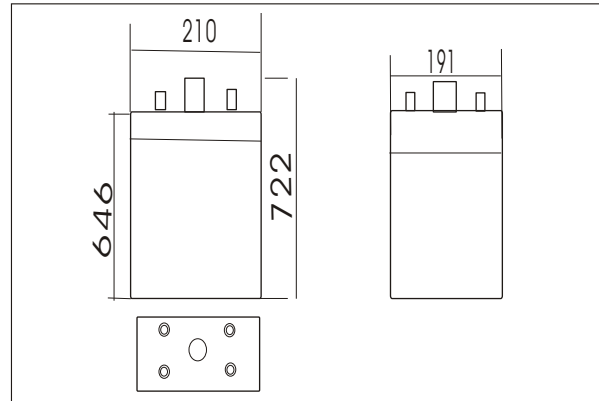
Characteristics

Capacity 25°C(77°F)	10 hour rate(80A)	800AH
	1 hour rate(360.A)	360AH
	0.5 hour rate(560A)	280AH
Capacity affected by Temperature (10hour rate)	40°C(104°F)	102%
	25°C(77°F)	100%
	0°C(32°F)	85%
	-15°C(5°F)	65%
Self-Discharge at 25°C(77°F)	Capacity after 3 month storage	91%
	Capacity after 6 month storage	82%
	Capacity after 12 month storage	64%
Terminal quantity	4	
Charge (constant Voltage)	Initial Charging Current less than 200A Voltage 2.33-2.38V	

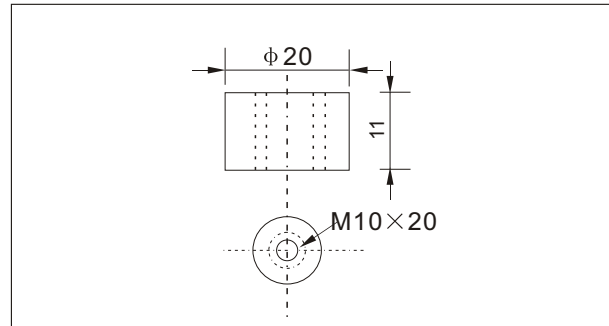
Charging characteristics(25°C)



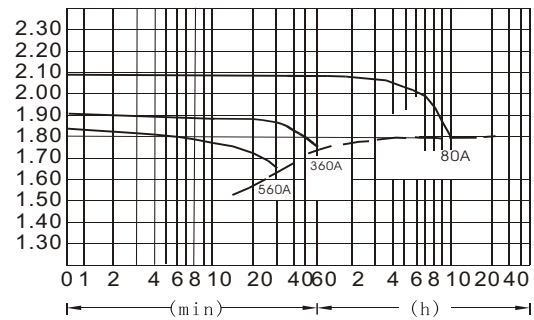
Outer dimensions (mm)



Terminal Type (mm)



Discharge Curves 25°C(77°F)



Cycling Curves

