

**P/N: VS2009 DATA SHEET****Feature**

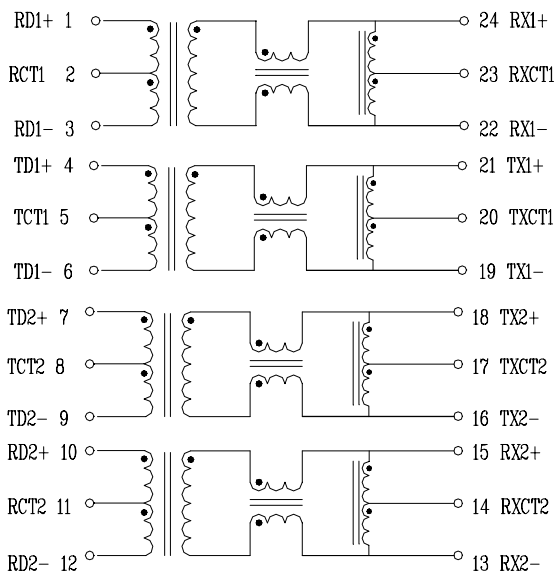
- IEEE 802.3af/ANSI X3.263 compliant performance.
- 350mA current capability.
- Designed for IP phone or switch applications.
- Compact footprint.
- The model offer Auto MDIX capability.
- Operating temperature range : 0°C to +70°C.
- Storage temperature range: -25°C to +125°C.

**Electrical Specifications @ 25°C**

Part Number	Turns Ratio (±5%)		Cross talk (dB Min)			HI-POT (Vrms)
	TX	RX	30 MHz	60 MHz	100 MHz	
VS2009	1CT: 1	1CT: 1	-43	-37	-33	1500

**Continue**

Part Number	Insertion Loss (dB Max)	Return Loss (dB Min)				DCMR (dB Min) TX/RX		
		1-100MHz	1-30MHz	40MHz	50 MHz	60-80MHz	30MHz	60MHz
VS2009	-1.1	-16	-14	-13	-12	-43	-37	-33

**Schematic****Mechanical**