

# HDS Series Micro Mini Side Actuated Surface Mount Detect Switches

**NEW!**

## Features/Benefits

- Low profile package sits just 1.4 mm off PCB
- Design allows top or side actuation
- Right and left options available
- Low actuation force, 30 grams max.
- Pick and place compatible, available in tape & reel packaging
- RoHS compliant and compatible

## Typical Applications

- Consumer electronics
- Computers
- Medical devices
- Mobile Communications
- ATCA and MicroTCA devices



**AdvancedTCA®**

**μTCA®**

## Specifications

CONTACT RATING: 1 mA 5 VDC  
 MECHANICAL AND ELECTRICAL LIFE: 100,000 cycles min.  
 CONTACT RESISTANCE: 1 Ω max. initial.  
 INSULATION RESISTANCE: 100 M Ω min. between adjacent contacts.  
 OPERATING TEMPERATURE: -40°C to + 80°C  
 STORAGE TEMPERATURE: -40°C to + 80°C  
 PACKAGING: tape & reel; 5,000 per reel.  
 TRAVEL:  
 Pre-travel .17 mm min.  
 Overtravel: .5 mm min.  
 Total: 1.07 mm

## Materials

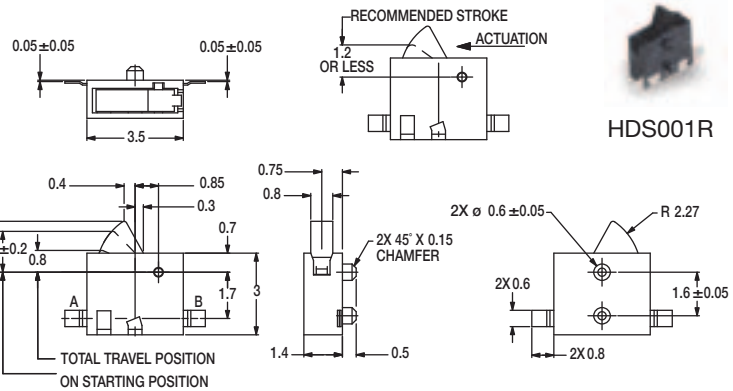
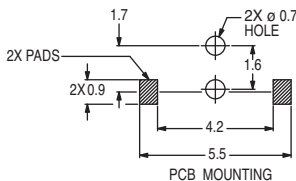
BASE: LCP HDS001L: Gray HDS001R: Black  
 COVER: PA 46 (UL94V-0)  
 ACTUATOR: PA 46 (UL94V-0) HDS001L: Gray HDS001R: Black  
 MOVABLE BLADE: Stainless Steel, Ag over Ni plating.  
 TERMINALS: Phosphor Bronze, Ag plating.

**NOTE:** Specifications and materials listed above are for switches with standard options. For information on specific and custom switches, consult Customer Service Center.

## Build-A-Switch

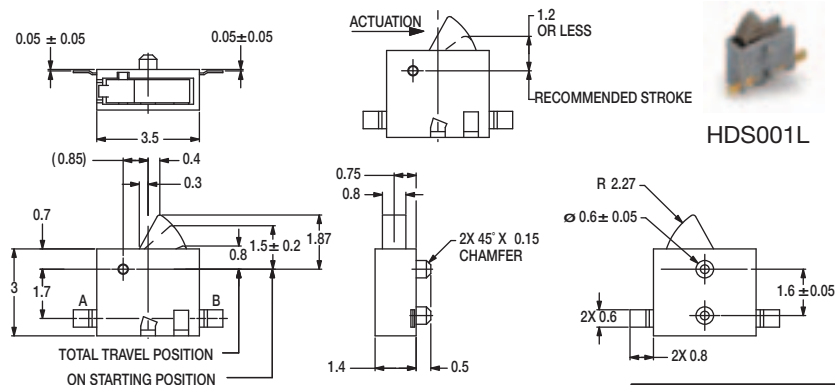
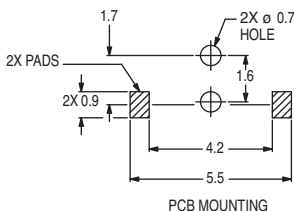
Complete part numbers for HDS Series are shown below.

PART NUMBER	PACKAGING	SCHEMATIC
<b>HDS001R</b>	TAPE & REEL	



HDS001R

PART NUMBER	PACKAGING	SCHEMATIC
<b>HDS001L</b>	TAPE & REEL	



HDS001L



Third Angle Projection

Dimensions are shown: mm  
 Specifications and dimensions subject to change

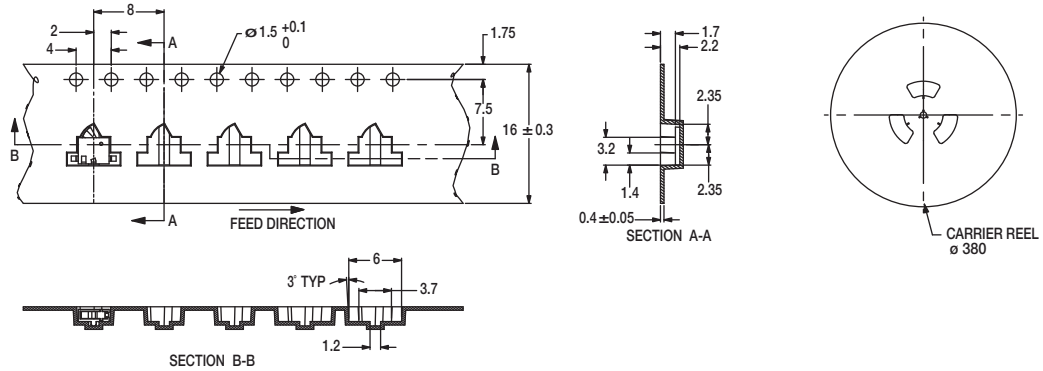


Detect

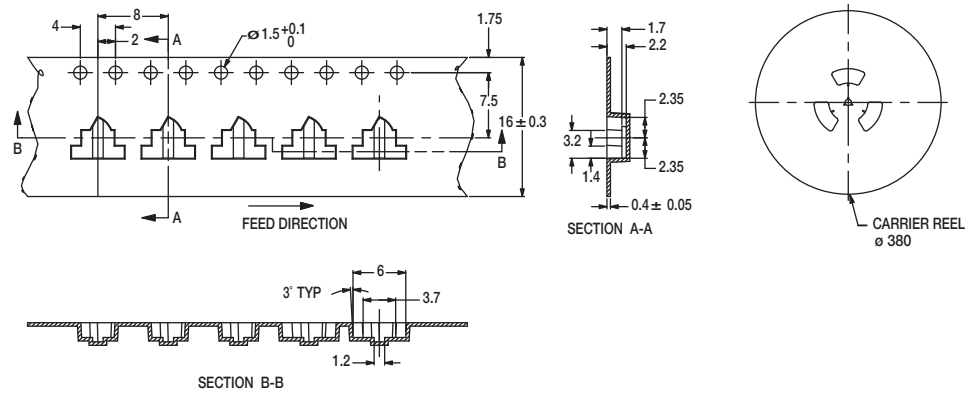
# HDS Series Micro Mini Side Actuated Surface Mount Detect Switches

## TAPE & REEL

HDS001R



HDS001L



NOTE: Quantity per reel: 5,000 pieces