

PLEASE CHECK WWW.MOLEX.COM FOR LATEST PART INFORMATION

Part Number: [0192030379](#)
Status: **Active**
Description: Krimptite™ Quick Disconnect, Female Steel 900 Degree F/383 Degree C, 10-12 AWG, Tab 6.35mm (.250")

Documents:

[Drawing \(PDF\)](#)

[RoHS Certificate of Compliance \(PDF\)](#)

General

Product Family	Quick Disconnects
Series	19203
Crimp Quality Equipment	Yes
Product Name	Krimptite™
Type	Quick Disconnect

Physical

Barrel Type	Closed
Gender	Male
Glow-Wire Compliant	No
Insulation	Nylon (PA)
Lock to Mating Part	None
Material - Metal	Steel
Material - Plating Mating	Nickel
Orientation	Straight
Packaging Type	Bag
Tab Thickness	0.80mm (.031")
Tab Width	7.70mm (.303")
Temperature Range - Operating	-65°C to +105°C
Wire Size AWG	10, 12

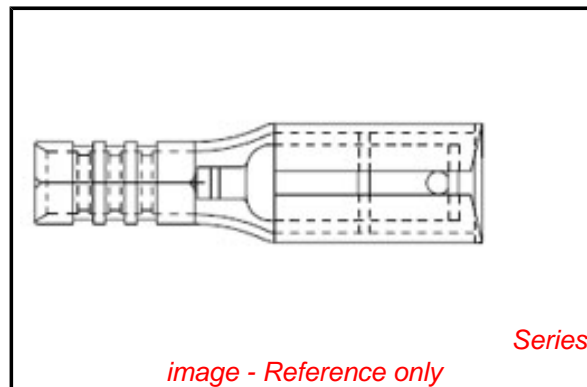
Electrical

Voltage - Maximum	N/A
-------------------	-----

Material Info

Reference - Drawing Numbers

Sales Drawing	SD-19203-025
---------------	--------------



EU RoHS

ELV and RoHS Compliant
REACH SVHC
Contains SVHC: No
Halogen-Free Status

China RoHS



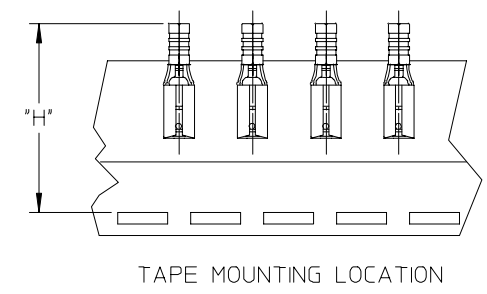
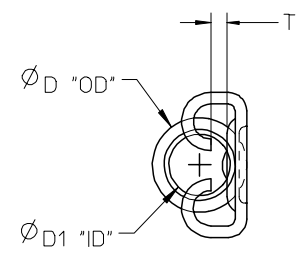
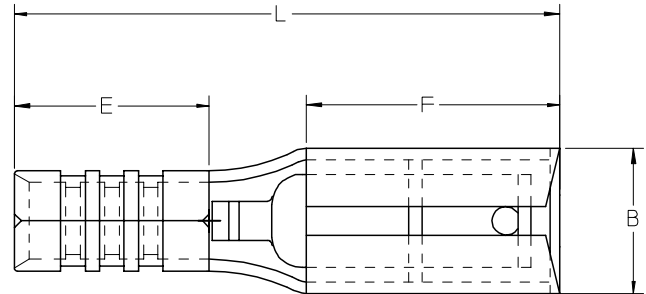
Need more information on product environmental compliance?

Email productcompliance@molex.com
 For a multiple part number RoHS Certificate of Compliance, [click here](#)

Please visit the [Contact Us](#) section for any non-product compliance questions.

Search Parts in this Series
[19203Series](#)

MATERIAL NUMBER	ENGINEERING NUMBER	WIRE RANGE AWG	TAPED MATERIAL NUMBER	TAPED ENGINEERING NUMBER	T	B	F	L	E	D1	D	H
					MAX	MAX	MIN	MAX	MIN	MIN	MAX	NOMINAL
192030373	192030373	16-14	192030467	192030373T	.030/1.75	.239/6.06	.252/6.40	.587/14.92	.173/4.40	.083/2.10	.138/3.50	1.184/30.07
192030390	192030390	16-14	192030469	192030390T	.030/1.75	.302/7.66	.307/7.80	.666/16.92	.173/4.40	.083/2.10	.138/3.50	1.184/30.07
192030379	192030379	12-10	192030468	192030379T	.030/1.75	.302/7.66	.307/7.80	.706/17.92	.213/5.40	.130/3.30	.185/4.70	1.235/31.37



NOTE(S):
 1. MATERIAL: STEEL .016/0.40 THICK REF.
 2. FINISH: NICKEL PLATED
 3. PART IS ROHS COMPLIANT.
 4. AMBIENT OPERATING TEMPERATURE UP TO 900 °F (483 °C).

ADDED OPERATING TEMP
 EC NO: ETC2007-0297
 DRW: NEHLE 2007/03/13
 CHKD: JMACNEIL 2007/03/13
 APPR: JMACNEIL 2007/03/14

QUALITY SYMBOLS
 ▽=0
 ▽=0
 DESCRIPTION
 REV

	GENERAL TOLERANCES (UNLESS SPECIFIED)	
	mm	INCH
4 PLACES	± .005	± .0004
3 PLACES	± .005	± .0004
2 PLACES	± .005	± .0004
1 PLACE	± .005	± .0004
ANGULAR		± .000°

DRAFT WHERE APPLICABLE MUST REMAIN WITHIN DIMENSIONS

DIMENSION STYLE	
IN/MM	
DRAWN BY	DATE
ASAYDEH	05/12/02
CHECKED BY	DATE
R DEROSS	05/12/02
APPROVED BY	DATE
R DEROSS	05/12/02
MATERIAL NO.	SEE CHART

SCALE	DESIGN UNITS	THIRD ANGLE PROJECTION
1:1	INCH	☉
TITLE		
KRIPTITE QUICK DISCONNECT, STEEL, 900 DEG F (483 DEG C)		
MATERIAL NO. MOLEX INCORPORATED		
DOCUMENT NO.	SHEET NO.	
SD-19203-025	1 OF 1	
THIS DRAWING CONTAINS INFORMATION THAT IS PROPRIETARY TO MOLEX INCORPORATED AND SHOULD NOT BE USED WITHOUT WRITTEN PERMISSION		