

**PLEASE CHECK WWW.MOLEX.COM FOR LATEST PART INFORMATION**

**Part Number:** [0330001002](#)  
**Status:** **Active**  
**Overview:** [mx150 sealed connector system](#)  
**Description:** MX150™ Male Terminal, Tin (Sn) Plating, 16-20 AWG, Left Reel Payoff, Contact Material Thickness 0.30mm (.012")

**Documents:**

[Drawing \(PDF\)](#) [RoHS Certificate of Compliance \(PDF\)](#)

**General**

|                         |   |
|-------------------------|---|
| Product Family          | Crimp Terminals                               |
| Series                  | <a href="#">33000</a>                         |
| Comments                | Left Reel Payoff                              |
| Crimp Quality Equipment | Yes   |
| Overview                | <a href="#">mx150 sealed connector system</a> |
| Product Name            | MX150™  |

**Physical**

|                                |                              |
|--------------------------------|------------------------------|
| Gender                         | Male                         |
| Material - Metal               | High Performance Alloy (HPA) |
| Material - Plating Mating      | Tin                          |
| Material - Plating Termination | Tin                          |
| Packaging Type                 | Reel                         |
| Plating min: Mating (µin)      | 20                           |
| Plating min: Mating (µm)       | 0.5                          |
| Plating min: Termination (µin) | 20                           |
| Plating min: Termination (µm)  | 0.5                          |
| Termination Interface: Style   | Crimp or Compression         |
| Wire Insulation Diameter       | 2.60mm (.102") max.          |
| Wire Size AWG                  | 16, 18, 20                   |
| Wire Size mm²                  | 0.75, 1.00                   |

**Electrical**

|                               |      |
|-------------------------------|------|
| Current - Maximum per Contact | 22A  |
| Voltage - Maximum             | 250V |

**Material Info**

**Reference - Drawing Numbers**

|               |              |
|---------------|--------------|
| Sales Drawing | SD-33000-001 |
|---------------|--------------|



Series

image - Reference only

**EU RoHS**

**ELV and RoHS Compliant**  
**REACH SVHC**  
**Contains SVHC: No**  
**Halogen-Free Status**

**China RoHS**



**Halogen-Free**

**Halogen-Free**

**Need more information on product environmental compliance?**

Email [productcompliance@molex.com](mailto:productcompliance@molex.com)  
 For a multiple part number RoHS Certificate of Compliance, [click here](#)

Please visit the [Contact Us](#) section for any non-product compliance questions.

**Search Parts in this Series**

[33000Series](#)

**Use With**

[33482](#) Dual Row Housing, [33481](#) Single Row Housing, [33486](#) Hybrid Housing

**Application Tooling | FAQ**

*Tooling specifications and manuals are found by selecting the products below. Crimp Height Specifications are then contained in the Application Tooling Specification document.*

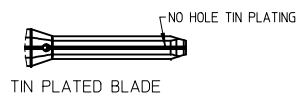
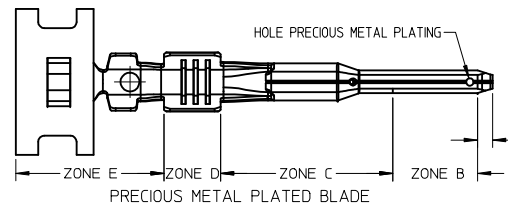
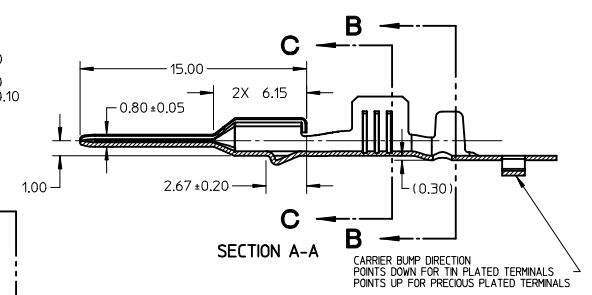
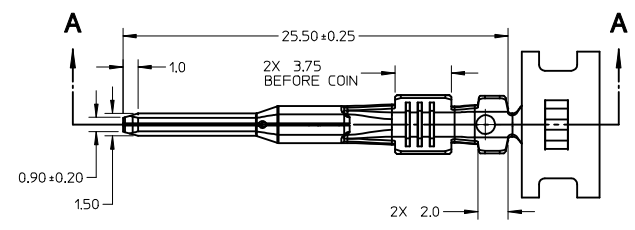
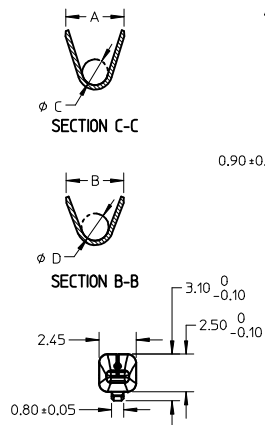
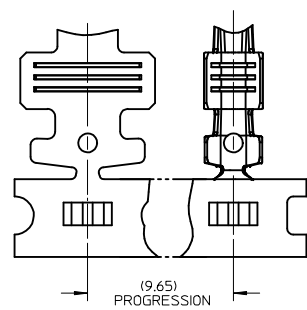
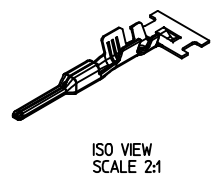
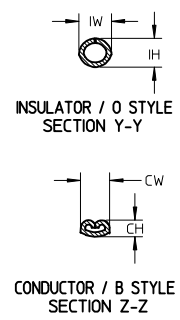
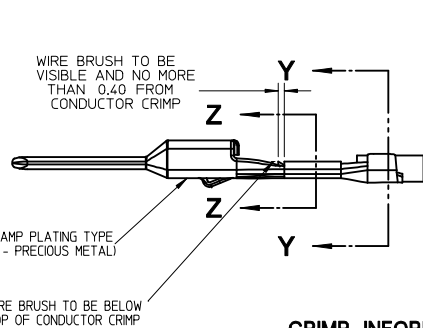
**Global**

| Description   | Product #                  |
|---|----------------------------|
| FineAdjust™<br>Applicator for<br>MX150™ Terminals -<br>16 AWG | <a href="#">0639000300</a> |
| FineAdjust™<br>Applicator for<br>MX150™ Terminals -<br>18 AWG | <a href="#">0639000400</a> |

|  |                   |
|--|-------------------|
| FineAdjust™                                    | <u>0639000500</u> |
| Applicator for<br>MX150™ Terminals -<br>20 AWG |                   |
| Hand Crimp Tool,<br>14-16AWG                   | <u>0638112400</u> |
| Hand Crimp Tool,<br>18-22AWG                   | <u>0638112600</u> |
| FineAdjust™                                    | <u>0638653100</u> |
| Applicator, 16AWG                              |                   |
| FineAdjust™                                    | <u>0638653200</u> |
| Applicator, 18AWG                              |                   |

This document was generated on 05/27/2010

**PLEASE CHECK [WWW.MOLEX.COM](http://WWW.MOLEX.COM) FOR LATEST PART INFORMATION**



- PLATING NOTES:
- PRECIOUS METAL PLATED TERMINAL:
    - GOLD PLATING:
      - ZONE A: SHALL BE COMPLETELY COVERED WITH NICKEL TO PREVENT EXPOSED BASE METAL REDUCED GOLD THICKNESS FROM ZONE B PERMITTED
      - ZONE B: PRECIOUS METAL PLATING PER MOLEX PLATING SPECIFICATION ES-88
        - BASE LAYER: ELECTRODEPOSITED DUCTILE SULFAMATE NICKEL THICKNESS: 1.25 - 2.25 MICROMETERS
        - GOLD LAYER: ELECTRODEPOSITED GOLD THICKNESS: 0.76 MICROMETERS MINIMUM
      - ZONE C: SHALL BE COMPLETELY COVERED WITH NICKEL TO PREVENT EXPOSED BASE METAL REDUCED PLATING THICKNESS FROM ZONE B AND ZONE D PERMITTED
      - ZONE D: TIN PLATING PER MOLEX PLATING SPECIFICATION ES-88
        - BASE LAYER: ELECTRODEPOSITED DUCTILE SULFAMATE NICKEL THICKNESS: 1.25 - 2.25 MICROMETERS
        - TIN LAYER: ELECTRODEPOSITED 100% TIN, MATTE FINISH THICKNESS: 2.5 - 4.0 MICROMETERS
      - ZONE E: SHALL BE COMPLETELY COVERED WITH NICKEL TO PREVENT EXPOSED BASE METAL REDUCED THICKNESS FROM ZONE D PERMITTED
    - SILVER PLATING:
      - ZONE A: SHALL BE COMPLETELY COVERED WITH NICKEL TO PREVENT EXPOSED BASE METAL REDUCED SILVER THICKNESS FROM ZONE B PERMITTED
      - ZONE B: SILVER PLATING
        - BASE LAYER: ELECTRODEPOSITED DUCTILE SULFAMATE NICKEL THICKNESS: 1.25 - 2.25 MICROMETERS
        - SILVER LAYER: ELECTRODEPOSITED PURE SILVER (0.5% MAX IMPURITIES) THICKNESS: 1.9 - 3.3 MICROMETERS FINISH: SEMI BRIGHT
      - ANTI-TARNISH: TREATMENT FOR SILVER PLATED TERMINAL - EVABRITE WS
      - ZONE C: SHALL BE COMPLETELY COVERED WITH NICKEL TO PREVENT EXPOSED BASE METAL REDUCED PLATING THICKNESS FROM ZONE B AND ZONE D PERMITTED
      - ZONE D: TIN PLATING PER MOLEX PLATING SPECIFICATION ES-88
        - BASE LAYER: ELECTRODEPOSITED DUCTILE SULFAMATE NICKEL THICKNESS 1.25 - 2.25 MICROMETERS
        - TIN LAYER: ELECTRODEPOSITED 100% TIN, MATTE FINISH THICKNESS 2.5 - 4.0 MICROMETERS
      - ZONE E: SHALL BE COMPLETELY COVERED WITH NICKEL TO PREVENT EXPOSED BASE METAL REDUCED THICKNESS FROM ZONE D PERMITTED
  - TIN PLATED TERMINAL (ENTIRE TERMINAL)
    - BASE LAYER: ELECTRODEPOSITED ADVANCED TIN BARRIER THICKNESS 0.25 - 1.00 MICROMETERS
    - TIN LAYER: ELECTRODEPOSITED REFLOW TIN, 100% TIN, NO BRIGHTENERS THICKNESS 0.50 - 1.00 MICROMETERS

- GENERAL NOTES: (UNLESS OTHERWISE SPECIFIED)
- MATING TERMINAL SHOWN ON SD-33012-002
  - MATERIAL: ASTM B422, UNS C19025, HR04 THICKNESS: 0.30 mm ±0.01 TEMPER: FULL HARD (REF) TENSILE: 496-572 MPA PLATING: SEE PLATING NOTES
  - MEETS CRIMP PERFORMANCE SPECIFICATION SAE/USCAR-21 (RELEASED: 08/25/01)
  - MEETS PERFORMANCE STANDARD FOR AUTOMOTIVE ELECTRICAL CONNECTOR SYSTEMS SAE/USCAR-2 REV 3 (APRIL 2001)
  - MEETS FIELD CORRELATED LIFE TEST SAE/USCAR-20 (NOVEMBER 2001)
  - MEETS WIRING COMPONENT DESIGN GUIDELINES SAE/USCAR-12 REV 2 (DECEMBER 2001)
  - MEETS ELECTRICAL CONNECTION SYSTEM DESIGN SPECIFICATION (SDS) REV 11 (5/2002)
  - REFERENCE PK-31300-516 FOR REEL DIRECTION
  - REFERENCE CS-33000-001 FOR ADDITIONAL CRIMP INFORMATION

|  |                               |                                       |       |   |                    |  |                        |                        |  |
|--|-------------------------------|---------------------------------------|-------|---|--------------------|--|------------------------|------------------------|--|
| ENTER DESCRIPTION<br>EC NO: UAU2010-0107<br>DRINKFERGUSON 2009/08/18<br>CHKD:A.DHIR 2009/08/19<br>APPR:BMOSER 2009/08/20 | QUALITY SYMBOLS<br>▽=0<br>▽=0 | GENERAL TOLERANCES (UNLESS SPECIFIED) |       | DIMENSION STYLE<br>MM ONLY  |                    | SCALE<br>4:1   | DESIGN UNITS<br>METRIC | THIRD ANGLE PROJECTION |  |
|  |                               | mm                                    | INCH  | DRAWN BY<br>L.PULLIAM   | DATE<br>2006/01/31 | TITLE<br>MX150 15MM BLADE TERMINAL                       |                        |                        |  |
| DESCRIPTION<br>C10   | REV                           | 4 PLACES ± ---                        | ± --- | CHECKED BY<br>A.DHIR  | DATE<br>2006/02/01 | MOLEX MOLEX INCORPORATED<br>DOCUMENT NO.<br>SD-33000-001 |                        |                        |  |
|  |                               | 3 PLACES ± ---                        | ± --- | APPROVED BY<br>B.MOSER  | DATE<br>2006/02/02 |  |                        |                        |  |
|  |                               | 2 PLACES ± 0.1                        | ± --- | MATERIAL NO.<br>SEE TABLE   |                    | SHEET NO.<br>1 OF 5                                      |                        |                        |  |
|  |                               | 1 PLACE ± 0.3                         | ± --- | THIS DRAWING CONTAINS INFORMATION THAT IS PROPRIETARY TO MOLEX INCORPORATED AND SHOULD NOT BE USED WITHOUT WRITTEN PERMISSION |                    |  |                        |                        |  |
|  |                               | ANGULAR ± 3 °                         |       |   |                    |  |                        |                        |  |

| SUPPLIER PART NO.<br>B DIRECTION<br>RIGHT PAYOFF | D DIRECTION<br>LEFT PAYOFF | FORD<br>PART NO. | PLATING<br>(STAMPING) | WIRE APPLICATION |                       |             | A +0.30                 | B +0.30 | C +0.30 | D +0.30 | E +0.005 | F +0.005 | G +0.005 | J +0.005 | K +0.005 | M +0.005 | N +0.005 | P +0.005 | R +0.005 | U +0.005 | V +0.005 |                       |
|--|----------------------------|------------------|-----------------------|------------------|-----------------------|-------------|-------------------------|---------|---------|---------|----------|----------|----------|----------|----------|----------|----------|----------|----------|----------|----------|-----------------------|
|  |                            |                  |                       | SAE (awg)        | WIRE<br>SPECIFICATION | METRIC (mm) |                         |         |         |         |          |          |          |          |          |          |          |          |          |          |          | WIRE<br>SPECIFICATION |
| 33000-0001                                       | 33000-1001                 | ZL1T-14421-DA    | TIN                   | 14               | MIL-123A/MIL-135A1    | 2.0, 1.5    | MIL-126A1<br>JASO D 611 | 3.9     | 3.8     | 1.7     | 1.6      | 12.82    | 0.60     | 1.19     | 7.05     | 13.12    | 1.35     | 6.91     | 2.44     | 6.11     | 2.72     | 1.40                  |
| 33000-0002                                       | 33000-1002                 | ZL1T-14421-CA    | TIN                   | 16               | MIL-123A              | -           |                         | 3.3     | 3.1     | 1.3     | 1.4      | 12.46    | 0.57     | 0.99     | 6.52     | 12.96    | 1.28     | 6.51     | 2.14     | 1.93     | 2.52     | 1.30                  |
|  |                            |                  |                       | 18               | MIL-123A              | 10, 0.75    | MIL-126A1               | 3.3     | 3.1     | 1.3     | 1.4      | 12.46    | 0.57     | 0.99     | 6.52     | 12.96    | 1.28     | 6.51     | 2.14     | 1.93     | 2.52     | 1.30                  |
|  |                            |                  |                       | 20               | SAE J1128 (IGXL)      | -           |                         | 3.3     | 3.1     | 1.3     | 1.4      | 12.46    | 0.57     | 0.99     | 6.52     | 12.96    | 1.03     | 6.36     | 2.14     | 1.93     | 2.04     | 1.05                  |
| 33000-0003                                       | 33000-1003                 | ZL1T-14421-BA    | TIN                   | 22               | MIL-123A              | 0.5         | MIL-126A1<br>JASO D 611 | 2.5     | 2.6     | 0.9     | 1.0      | 11.97    | 0.42     | 0.72     | 6.57     | 12.24    | 0.93     | 6.31     | 1.60     | 1.44     | 1.84     | 0.95                  |
| 33000-0003*                                      | 33000-1003*                | ZL1T-14421-BA*   | TIN                   | -                |                       | 0.35        | WSK-1A348-A2            | 2.5     | 2.6     | 0.9     | 1.0      | 11.97    | 0.42     | 0.72     | 6.57     | 12.24    | 0.93     | 6.31     | 1.60     | 1.44     | 1.84     | 0.95                  |
| 33000-0024*                                      | 33000-1024*                | 4L2T-14421-AA*   | TIN                   | -                |                       | 0.35 + 0.35 | MIL-126A1               | T80     | T80     | T80     | T80      | T80      | T80      | T80      | T80      | T80      | T80      | T80      | T80      | T80      | T80      | T80                   |
| 33000-0024*                                      | 33000-1024*                | 4L2T-14421-AA*   | TIN                   | -                |                       | 0.35 + 0.50 | MIL-126A1               | T80     | T80     | T80     | T80      | T80      | T80      | T80      | T80      | T80      | T80      | T80      | T80      | T80      | T80      | T80                   |
| 33011-1002                                       | 33011-0002                 | ZL1T-14421-GA    | GOLD                  | 14               | MIL-123A/MIL-135A1    | 2.0, 1.5    | MIL-126A1<br>JASO D 611 | 3.9     | 3.8     | 1.7     | 1.6      | 12.82    | 0.60     | 1.19     | 7.05     | 13.12    | 1.35     | 6.91     | 2.44     | 6.11     | 2.72     | 1.40                  |
| 33011-1004                                       | 33011-0004                 | ZL1T-14421-FA    | GOLD                  | 16               | MIL-123A              | -           |                         | 3.3     | 3.1     | 1.3     | 1.4      | 12.46    | 0.57     | 0.99     | 6.52     | 12.96    | 1.28     | 6.51     | 2.14     | 1.93     | 2.52     | 1.30                  |
|  |                            |                  |                       | 18               | MIL-123A              | 10, 0.75    | MIL-126A1               | 3.3     | 3.1     | 1.3     | 1.4      | 12.46    | 0.57     | 0.99     | 6.52     | 12.96    | 1.13     | 6.46     | 2.14     | 1.93     | 2.23     | 1.15                  |
|  |                            |                  |                       | 20               | MIL-123A              | -           |                         | 3.3     | 3.1     | 1.3     | 1.4      | 12.46    | 0.57     | 0.99     | 6.52     | 12.96    | 1.28     | 6.51     | 2.14     | 1.93     | 2.52     | 1.30                  |
| 33011-1006                                       | 33011-0006                 | ZL1T-14421-EA    | GOLD                  | 22               | MIL-123A              | 0.5         | MIL-126A1<br>JASO D 611 | 2.5     | 2.6     | 0.9     | 1.0      | 11.97    | 0.42     | 0.72     | 6.57     | 12.24    | 0.93     | 6.31     | 1.60     | 1.44     | 1.84     | 0.95                  |
| 33011-1006*                                      | 33011-0006*                | ZL1T-14421-EA*   | GOLD                  | -                |                       | 0.35        | WSK-1A348-A2            | 2.5     | 2.6     | 0.9     | 1.0      | 11.97    | 0.42     | 0.72     | 6.57     | 12.24    | 0.93     | 6.31     | 1.60     | 1.44     | 1.84     | 0.95                  |
| 33011-2003                                       | 33011-3003                 | 7U5T-14421-CA    | SILVER                | 14               | MIL-123A/MIL-135A1    | 2.0, 1.5    | MIL-126A1<br>JASO D 611 | 3.9     | 3.8     | 1.7     | 1.6      | 12.82    | 0.60     | 1.19     | 7.05     | 13.12    | 1.35     | 6.91     | 2.44     | 6.11     | 2.72     | 1.40                  |
| 33011-2002                                       | 33011-3002                 | 7U5T-14421-BA    | SILVER                | 16               | MIL-123A              | -           |                         | 3.3     | 3.1     | 1.3     | 1.4      | 12.46    | 0.57     | 0.99     | 6.52     | 12.96    | 1.28     | 6.51     | 2.14     | 1.93     | 2.52     | 1.30                  |
|  |                            |                  |                       | 18               | MIL-123A              | 10, 0.75    | MIL-126A1               | 3.3     | 3.1     | 1.3     | 1.4      | 12.46    | 0.57     | 0.99     | 6.52     | 12.96    | 1.13     | 6.46     | 2.14     | 1.93     | 2.23     | 1.15                  |
|  |                            |                  |                       | 20               | SAE J1128 (IGXL)      | -           |                         | 3.3     | 3.1     | 1.3     | 1.4      | 12.46    | 0.57     | 0.99     | 6.52     | 12.96    | 1.28     | 6.51     | 2.14     | 1.93     | 2.52     | 1.30                  |
| 33011-2001                                       | 33011-3001                 | 7U5T-14421-AA    | SILVER                | 22               | MIL-123A              | 0.5         | MIL-126A1<br>JASO D 611 | 2.5     | 2.6     | 0.9     | 1.0      | 11.97    | 0.42     | 0.72     | 6.57     | 12.24    | 0.93     | 6.31     | 1.60     | 1.44     | 1.84     | 0.95                  |
| 33011-2001*                                      | 33011-3001*                | 7U5T-14421-AA*   | SILVER                | -                |                       | 0.35        | WSK-1A348-A2            | 2.5     | 2.6     | 0.9     | 1.0      | 11.97    | 0.42     | 0.72     | 6.57     | 12.24    | 0.93     | 6.31     | 1.60     | 1.44     | 1.84     | 0.95                  |

\* UNSEALED APPLICATIONS ONLY

| SUPPLIER PART NO.<br>B DIRECTION<br>RIGHT PAYOFF | FORD PART NO.<br>D DIRECTION<br>LEFT PAYOFF | PLATING        | WIRE SIZE | WIRE<br>SPECIFICATION | CONDUCTOR<br>CH SECT Z-Z'<br>±0.05 mm | CONDUCTOR<br>CW SECT Z-Z'<br>±0.10 mm | INSULATOR<br>IH SECT Y-Y'<br>±0.10 mm | INSULATOR<br>IW SECT Y-Y'<br>±0.10 mm | WIRE PULL<br>FORCE (N) |     |
|--|---|----------------|-----------|-----------------------|---------------------------------------|---------------------------------------|---------------------------------------|---------------------------------------|------------------------|-----|
| 33000-0001                                       | 33000-1001                                  | ZL1T-14421-DA  | TIN       | 14 awg                | MIL-123A                              | 1.65                                  | 2.45                                  | 2.85                                  | 2.75                   | 339 |
|  |   |                |           | MIL-135A1             | 1.65                                  | 2.45                                  | 2.80                                  | 2.80                                  | 339                    |     |
| 33000-0002                                       | 33000-1002                                  | ZL1T-14421-CA  | TIN       | 16 awg                | MIL-123A                              | 1.35                                  | 2.15                                  | 2.20                                  | 2.60                   | 215 |
|  |   |                |           | 18 awg                | SAE J1128 (IGXL)                      | 1.25                                  | 2.15                                  | 2.30                                  | 2.60                   | 158 |
|  |   |                |           | 20 awg                | MIL-123A                              | 1.15                                  | 2.15                                  | 1.90                                  | 2.10                   | 113 |
| 33000-0003                                       | 33000-1003                                  | ZL1T-14421-BA  | TIN       | 22 awg                | MIL-123A                              | 1.00                                  | 1.60                                  | 1.85                                  | 1.90                   | 62  |
| 33000-0001                                       | 33000-1001                                  | ZL1T-14421-DA  | TIN       | 2.0 mm <sup>2</sup>   | JASO D 611 (AVSSI)                    | 1.60                                  | 2.45                                  | 2.85                                  | 2.75                   | 233 |
| 33000-0002                                       | 33000-1002                                  | ZL1T-14421-CA  | TIN       | 1.5 mm <sup>2</sup>   | MIL-126A1                             | 1.40                                  | 2.45                                  | 2.65                                  | 2.80                   | 177 |
|  |   |                |           | 1.0 mm <sup>2</sup>   | MIL-126A1                             | 1.30                                  | 2.15                                  | 2.00                                  | 2.30                   | 162 |
|  |   |                |           | 0.75 mm <sup>2</sup>  | MIL-126A1                             | 1.25                                  | 2.15                                  | 1.95                                  | 2.30                   | 145 |
| 33000-0003                                       | 33000-1003                                  | ZL1T-14421-BA  | TIN       | 0.5 mm <sup>2</sup>   | MIL-126A1                             | 1.10                                  | 1.60                                  | 1.80                                  | 1.90                   | 82  |
| 33000-0003*                                      | 33000-1003*                                 | ZL1T-14421-BA* | TIN       | 0.35 mm <sup>2</sup>  | JASO D 611 (AVSSI)                    | 1.10                                  | 1.60                                  | 1.85                                  | 1.90                   | 100 |
| 33000-0024*                                      | 33000-1024*                                 | 4L2T-14421-AA* | TIN       | 0.35 mm <sup>2</sup>  | WSK-1A348-A2                          | 0.95                                  | 1.60                                  | 1.70                                  | 1.90                   | 50  |
| 33000-0024*                                      | 33000-1024*                                 | 4L2T-14421-AA* | TIN       | 0.35 + 0.50           | MIL-126A1                             | T80                                   | T80                                   | T80                                   | T80                    | T80 |
| 33011-1002                                       | 33011-0002                                  | ZL1T-14421-GA  | GOLD      | 14 awg                | MIL-123A                              | 1.65                                  | 2.45                                  | 2.85                                  | 2.75                   | 339 |
|  |   |                |           | 16 awg                | MIL-135A1                             | 1.65                                  | 2.45                                  | 2.80                                  | 2.80                   | 339 |
|  |   |                |           | 18 awg                | MIL-123A                              | 1.35                                  | 2.15                                  | 2.20                                  | 2.60                   | 215 |
| 33011-1004                                       | 33011-0004                                  | ZL1T-14421-FA  | GOLD      | 18 awg                | MIL-123A                              | 1.25                                  | 2.15                                  | 2.00                                  | 2.30                   | 157 |
|  |   |                |           | 20 awg                | SAE J1128 (IGXL)                      | 1.25                                  | 2.15                                  | 2.30                                  | 2.60                   | 158 |
|  |   |                |           | 20 awg                | MIL-123A                              | 1.15                                  | 2.15                                  | 1.90                                  | 2.10                   | 113 |
| 33011-1006                                       | 33011-0006                                  | ZL1T-14421-EA  | GOLD      | 22 awg                | MIL-123A                              | 1.00                                  | 1.60                                  | 1.85                                  | 1.90                   | 62  |
| 33011-1002                                       | 33011-0002                                  | ZL1T-14421-GA  | GOLD      | 2.0 mm <sup>2</sup>   | JASO D 611 (AVSSI)                    | 1.60                                  | 2.45                                  | 2.85                                  | 2.75                   | 233 |
| 33011-1004                                       | 33011-0004                                  | ZL1T-14421-FA  | GOLD      | 1.5 mm <sup>2</sup>   | MIL-126A1                             | 1.40                                  | 2.45                                  | 2.65                                  | 2.80                   | 177 |
|  |   |                |           | 1.0 mm <sup>2</sup>   | MIL-126A1                             | 1.30                                  | 2.15                                  | 2.00                                  | 2.30                   | 162 |
|  |   |                |           | 0.75 mm <sup>2</sup>  | MIL-126A1                             | 1.25                                  | 2.15                                  | 1.95                                  | 2.30                   | 145 |
| 33011-1006                                       | 33011-0006                                  | ZL1T-14421-EA  | GOLD      | 0.5 mm <sup>2</sup>   | MIL-126A1                             | 1.10                                  | 1.60                                  | 1.80                                  | 1.90                   | 82  |
| 33011-1006*                                      | 33011-0006*                                 | ZL1T-14421-EA* | GOLD      | 0.35 mm <sup>2</sup>  | JASO D 611 (AVSSI)                    | 1.10                                  | 1.60                                  | 1.85                                  | 1.90                   | 100 |
| 33011-2003                                       | 33011-3003                                  | 7U5T-14421-CA  | SILVER    | 14 awg                | MIL-123A                              | 1.65                                  | 2.45                                  | 2.85                                  | 2.75                   | 339 |
| 33011-2002                                       | 33011-3002                                  | 7U5T-14421-BA  | SILVER    | 16 awg                | MIL-135A1                             | 1.65                                  | 2.45                                  | 2.80                                  | 2.80                   | 339 |
|  |   |                |           | 18 awg                | MIL-123A                              | 1.35                                  | 2.15                                  | 2.20                                  | 2.60                   | 215 |
|  |   |                |           | 20 awg                | SAE J1128 (IGXL)                      | 1.25                                  | 2.15                                  | 2.30                                  | 2.60                   | 158 |
| 33011-2001                                       | 33011-3001                                  | 7U5T-14421-AA  | SILVER    | 22 awg                | MIL-123A                              | 1.00                                  | 1.60                                  | 1.85                                  | 1.90                   | 62  |
| 33011-2003                                       | 33011-3003                                  | 7U5T-14421-CA  | SILVER    | 2.0 mm <sup>2</sup>   | JASO D 611 (AVSSI)                    | 1.60                                  | 2.45                                  | 2.85                                  | 2.75                   | 233 |
| 33011-2002                                       | 33011-3002                                  | 7U5T-14421-BA  | SILVER    | 1.5 mm <sup>2</sup>   | MIL-126A1                             | 1.40                                  | 2.45                                  | 2.65                                  | 2.80                   | 177 |
|  |   |                |           | 1.0 mm <sup>2</sup>   | MIL-126A1                             | 1.30                                  | 2.15                                  | 2.00                                  | 2.30                   | 162 |
|  |   |                |           | 0.75 mm <sup>2</sup>  | MIL-126A1                             | 1.25                                  | 2.15                                  | 1.95                                  | 2.30                   | 145 |
| 33011-2001                                       | 33011-3001                                  | 7U5T-14421-AA  | SILVER    | 0.5 mm <sup>2</sup>   | MIL-126A1                             | 1.10                                  | 1.60                                  | 1.80                                  | 1.90                   | 82  |
| 33011-2001*                                      | 33011-3001*                                 | 7U5T-14421-AA* | SILVER    | 0.35 mm <sup>2</sup>  | JASO D 611 (AVSSI)                    | 1.10                                  | 1.60                                  | 1.85                                  | 1.90                   | 100 |

\* UNSEALED APPLICATIONS ONLY

ENTER DESCRIPTION  
EC NO: UAU2010-0107  
DRUNKFERGUSON 2009/08/18  
CHKD-A:DHIR 2009/08/19  
APPR:BMOSER 2009/08/20  
REV

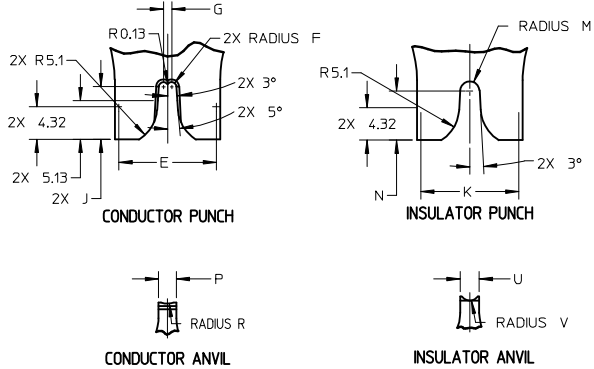
QUALITY SYMBOLS  
▽=0  
▽=0  
C10

GENERAL TOLERANCES (UNLESS SPECIFIED)  
mm INCH  
4 PLACES ± --- ± ---  
3 PLACES ± --- ± ---  
2 PLACES ± 0.1 ± ---  
1 PLACE ± 0.3 ± ---  
ANGULAR ± 3°  
DRAFT WHERE APPLICABLE  
MUST REMAIN  
WITHIN DIMENSIONS

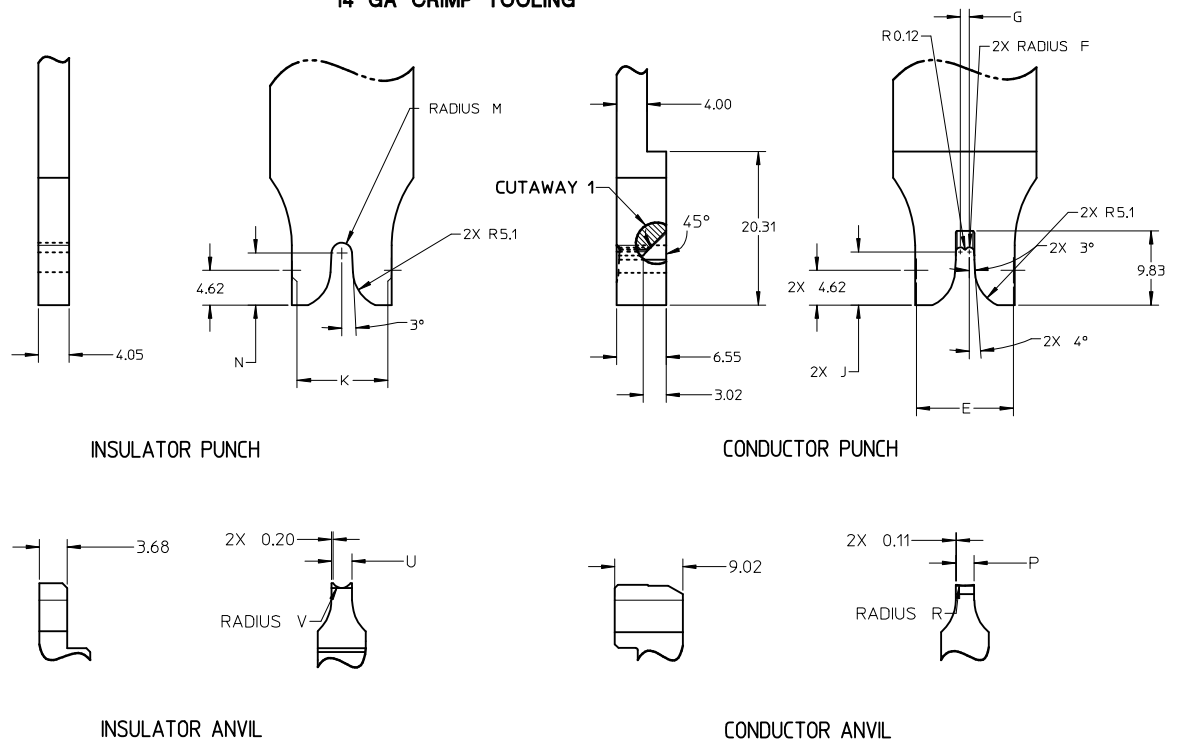
DIMENSION STYLE  
MM ONLY  
DRAWN BY DATE  
L.PULLIAM 2006/01/31  
CHECKED BY DATE  
A.DHIR 2006/02/01  
APPROVED BY DATE  
B.MOSER 2006/02/02  
MATERIAL NO.  
999999999  
DOCUMENT NO.  
SD-33000-001

SCALE  
1:1  
DESIGN UNITS  
METRIC  
THIRD ANGLE  
PROJECTION  
TITLE  
MX150 15MM BLADE  
TERMINAL  
SHEET NO.  
2 OF 5  
THIS DRAWING CONTAINS INFORMATION THAT IS PROPRIETARY TO MOLEX  
INCORPORATED AND SHOULD NOT BE USED WITHOUT WRITTEN PERMISSION

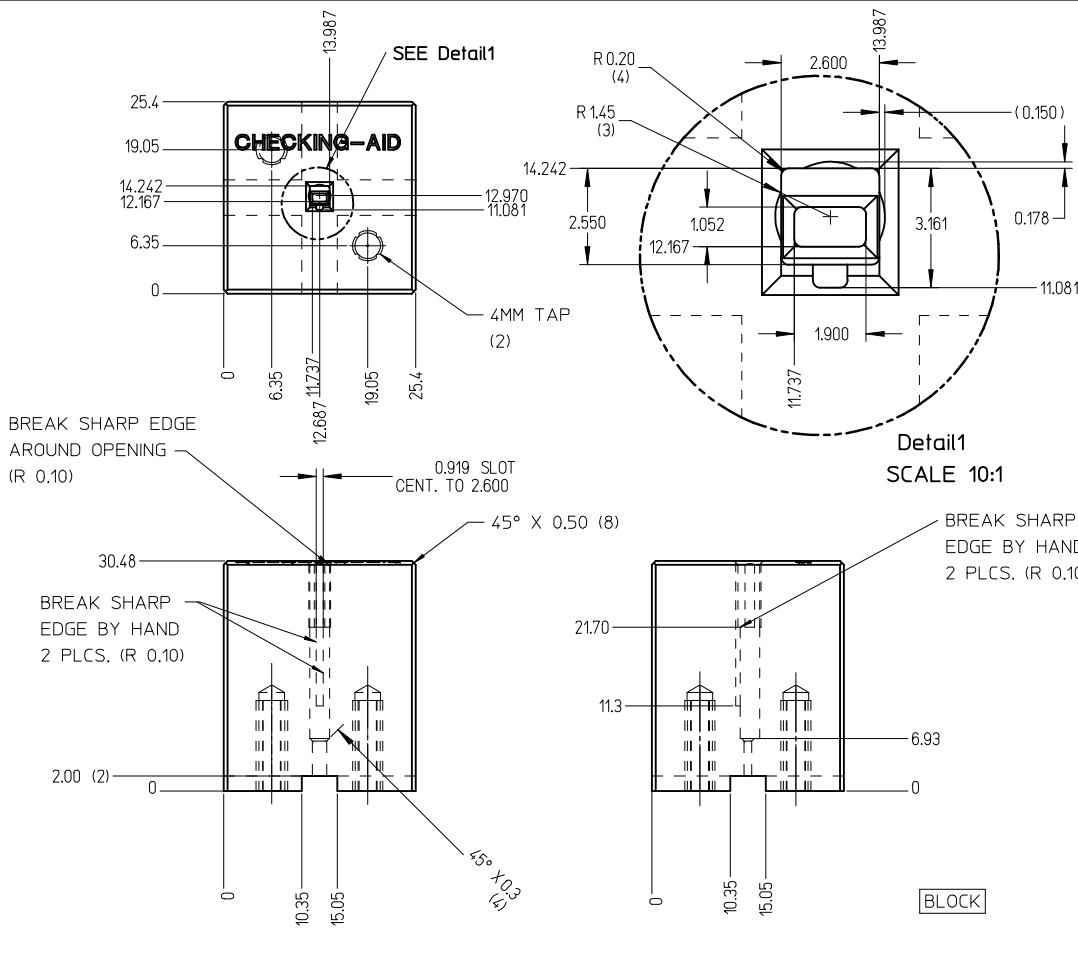
**CRIMP TOOL INFORMATION  
EXCEPT 14 GA**



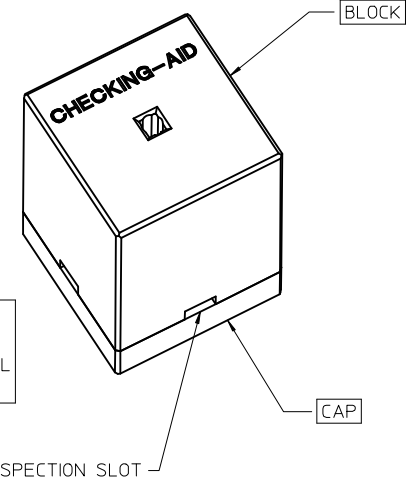
**14 GA CRIMP TOOLING**



| <b>ENTER DESCRIPTION</b><br>EC NO: UAU2010-0107<br>DRWNG:FERGUSON 2009/08/18<br>CHKD:A.DHIR 2009/08/19<br>APPR:BMOSER 2009/08/20<br>REV | QUALITY SYMBOLS<br>▽=0<br>▽=0   | GENERAL TOLERANCES (UNLESS SPECIFIED)<br><table border="1"> <tr> <th></th> <th>mm</th> <th>INCH</th> </tr> <tr> <td>4 PLACES</td> <td>± .005</td> <td>± .0004</td> </tr> <tr> <td>3 PLACES</td> <td>± .005</td> <td>± .0004</td> </tr> <tr> <td>2 PLACES</td> <td>± 0.1</td> <td>± .004</td> </tr> <tr> <td>1 PLACE</td> <td>± 0.3</td> <td>± .012</td> </tr> </table> |         | mm | INCH | 4 PLACES | ± .005 | ± .0004 | 3 PLACES | ± .005 | ± .0004 | 2 PLACES | ± 0.1 | ± .004 | 1 PLACE | ± 0.3 | ± .012 | DIMENSION STYLE<br><b>MM ONLY</b><br>DRAWN BY DATE<br>L.PULLIAM 2006/01/31<br>CHECKED BY DATE<br>A.DHIR 2006/02/01<br>APPROVED BY DATE<br>B.MOSER 2006/02/02 | SCALE<br><b>2:1</b><br>DESIGN UNITS<br><b>METRIC</b><br>THIRD ANGLE PROJECTION | TITLE<br><b>MX150 15MM BLADE TERMINAL</b> |
|---|---|--|---------|----|------|----------|--------|---------|----------|--------|---------|----------|-------|--------|---------|-------|--------|--|--|---|
|   |   | mm   | INCH    |    |      |          |        |         |          |        |         |          |       |        |         |       |        |  |  |   |
|   | 4 PLACES  | ± .005   | ± .0004 |    |      |          |        |         |          |        |         |          |       |        |         |       |        |  |  |   |
|   | 3 PLACES  | ± .005   | ± .0004 |    |      |          |        |         |          |        |         |          |       |        |         |       |        |  |  |   |
| 2 PLACES  | ± 0.1   | ± .004   |         |    |      |          |        |         |          |        |         |          |       |        |         |       |        |  |  |   |
| 1 PLACE   | ± 0.3   | ± .012   |         |    |      |          |        |         |          |        |         |          |       |        |         |       |        |  |  |   |
| MATERIAL NO.<br><b>SEE TABLE</b>  | DOCUMENT NO.<br><b>SD-33000-001</b>   | SHEET NO.<br><b>3 OF 5</b>   |         |    |      |          |        |         |          |        |         |          |       |        |         |       |        |  |  |   |
| SIZE<br><b>C10</b>  | THIS DRAWING CONTAINS INFORMATION THAT IS PROPRIETARY TO MOLEX INCORPORATED AND SHOULD NOT BE USED WITHOUT WRITTEN PERMISSION |  |         |    |      |          |        |         |          |        |         |          |       |        |         |       |        |  |  |   |

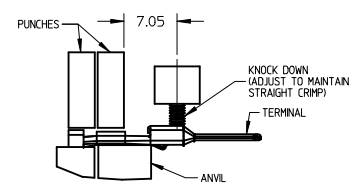
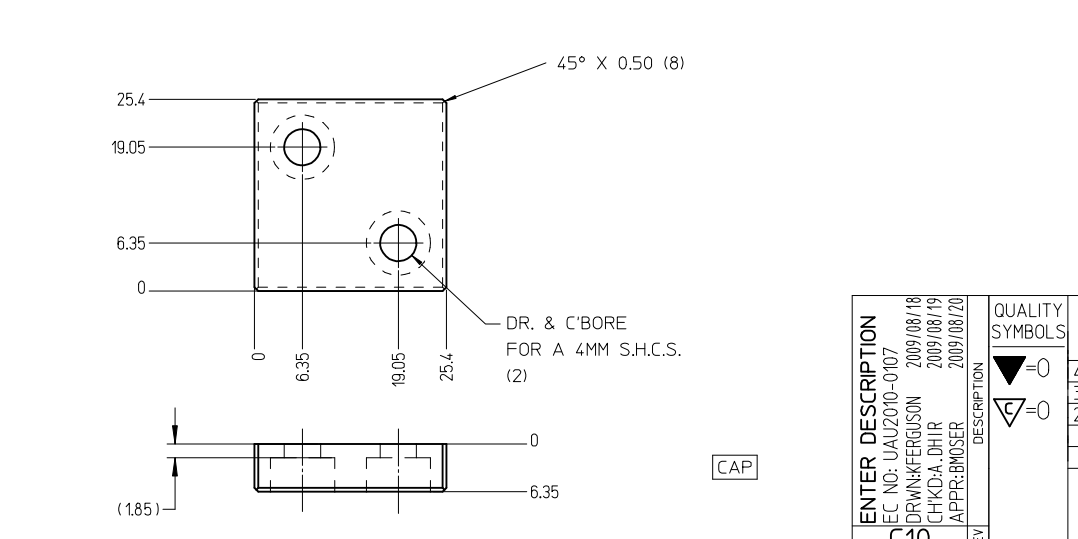


CHECKING-AID  
 2 PIECE ASM. A2 TOOL STEEL  
 HARDEN & GRIND TO A ROCKWELL  
 HARDNESS "C" SCALE OF 56-58



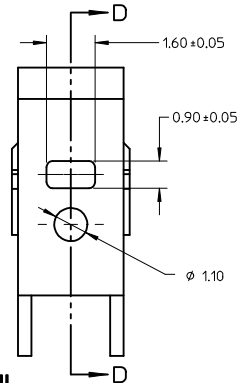
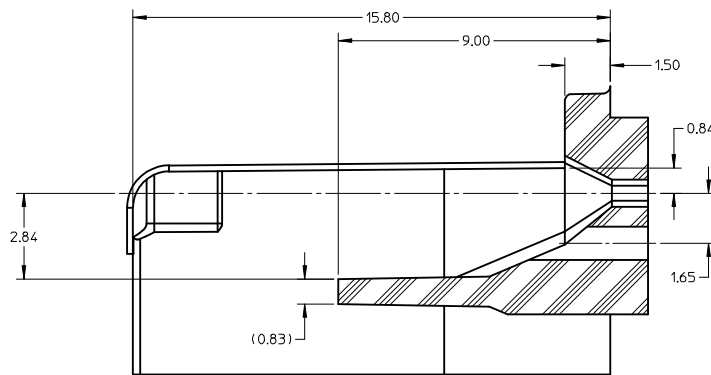
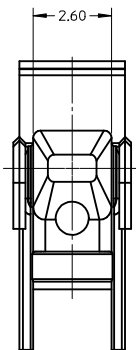
CHECKING AID TOLERANCE

|      |        |
|------|--------|
| .XXX | = .005 |
| .XX  | = .03  |
| .X   | = .3   |

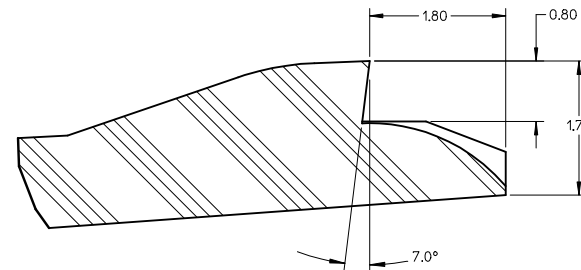
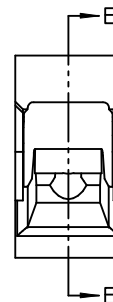
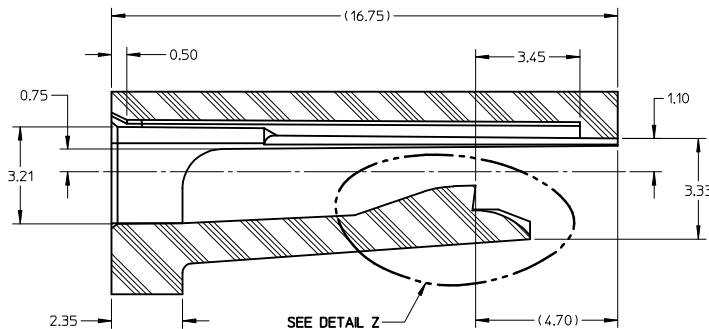
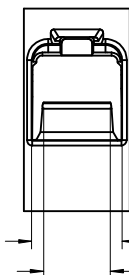


- CRIMP REQUIREMENTS:
1. CRIMP STRAIGHTNESS MUST BE MAINTAINED. USE A KNOCKDOWN TOOL LOCATED AS SHOWN. TERMINAL BOX MUST NOT BE DEFORMED
  2. AFTER CRIMPING, THE TERMINAL AND WIRE MUST FIT FREELY INTO THE CHECKING AID 33000-700. PROPER INSERTION DEPTH IS MET WHEN BLADE TIP STOPS ON CAP. SLOTS PROVIDED TO VISUALLY INSPECT STOPPAGE OF PIN TIP.
  3. FOR OTHER MECHANICAL REQUIREMENTS ON CRIMPED TERMINALS, REFER TO SAE/USCAR-21 (5-13-02) SECTIONS 4.2 (VISUAL INSPECTION), 4.3 (CROSS SECTION ANALYSIS) AND 4.4 (CONDUCTOR CRIMP PULLOUT FORCE)

| ENTER DESCRIPTION<br>EC NO: UAU2010-0107<br>DRWNKFERGUSON 2009/08/18<br>CHKD:ADHIR 2009/08/19<br>APPR:BMOSER 2009/08/20<br>REV: | QUALITY SYMBOLS   | GENERAL TOLERANCES (UNLESS SPECIFIED)<br><table border="1"> <tr><th></th><th>mm</th><th>INCH</th></tr> <tr><td>4 PLACES</td><td>± .005</td><td>± .0001</td></tr> <tr><td>3 PLACES</td><td>± .002</td><td>± .0001</td></tr> <tr><td>2 PLACES</td><td>± 0.1</td><td>± .004</td></tr> <tr><td>1 PLACE</td><td>± 0.3</td><td>± .012</td></tr> </table> ANGULAR ± 3° |   | mm                                  | INCH                       | 4 PLACES | ± .005 | ± .0001 | 3 PLACES | ± .002 | ± .0001 | 2 PLACES | ± 0.1 | ± .004 | 1 PLACE | ± 0.3 | ± .012 | DIMENSION STYLE<br><b>MM ONLY</b> | SCALE<br><b>2:1</b> | DESIGN UNITS<br><b>METRIC</b> | THIRD ANGLE PROJECTION |
|---|---|---|---|-------------------------------------|----------------------------|----------|--------|---------|----------|--------|---------|----------|-------|--------|---------|-------|--------|-----------------------------------|---------------------|-------------------------------|------------------------|
|   |   |   | mm  | INCH                                |                            |          |        |         |          |        |         |          |       |        |         |       |        |                                   |                     |                               |                        |
|   | 4 PLACES  |   | ± .005                                    | ± .0001                             |                            |          |        |         |          |        |         |          |       |        |         |       |        |                                   |                     |                               |                        |
|   | 3 PLACES  |   | ± .002                                    | ± .0001                             |                            |          |        |         |          |        |         |          |       |        |         |       |        |                                   |                     |                               |                        |
| 2 PLACES  | ± 0.1   | ± .004  |   |                                     |                            |          |        |         |          |        |         |          |       |        |         |       |        |                                   |                     |                               |                        |
| 1 PLACE   | ± 0.3   | ± .012  |   |                                     |                            |          |        |         |          |        |         |          |       |        |         |       |        |                                   |                     |                               |                        |
| DRAWN BY<br>L.PULLIAM 2006/01/31  | CHECKED BY<br>A.DHIR 2006/02/01   | APPROVED BY<br>B.MOSER 2006/02/02   | TITLE<br><b>MX150 15MM BLADE TERMINAL</b> | DOCUMENT NO.<br><b>SD-33000-001</b> | SHEET NO.<br><b>4 OF 5</b> |          |        |         |          |        |         |          |       |        |         |       |        |                                   |                     |                               |                        |
| MATERIAL NO.<br><b>SEE TABLE</b>  | MOLEX INCORPORATED  |   |   |                                     |                            |          |        |         |          |        |         |          |       |        |         |       |        |                                   |                     |                               |                        |
| SIZE<br><b>C10</b>  | THIS DRAWING CONTAINS INFORMATION THAT IS PROPRIETARY TO MOLEX INCORPORATED AND SHOULD NOT BE USED WITHOUT WRITTEN PERMISSION |   |   |                                     |                            |          |        |         |          |        |         |          |       |        |         |       |        |                                   |                     |                               |                        |

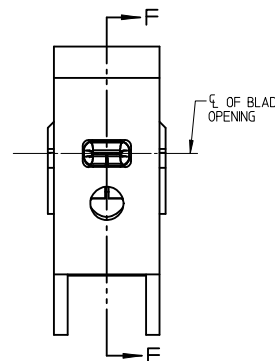
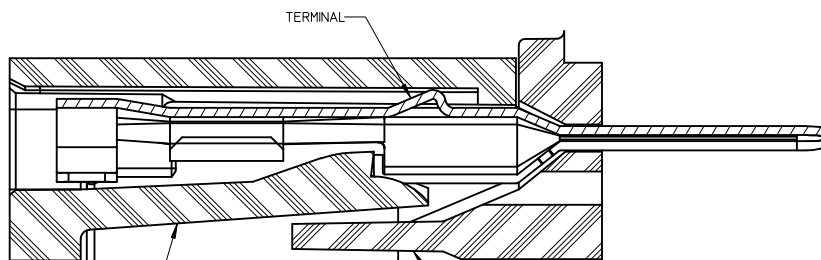
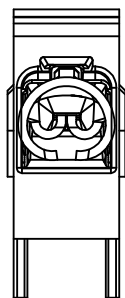


SECTION D-D TPA/INSERT DETAIL



DETAIL Z SCALE 20:1

SECTION E-E HOUSING DETAIL



BLADE TERMINAL HOUSING CAVITY SECTION F-F TPA/INSERT CAVITY

BLADE CAVITY ASSEMBLY VIEWS

NOTES: (UNLESS OTHERWISE SPECIFIED)

1. TOLERANCES: LINEAR  $\pm 0.10$   
ANGULAR  $3^\circ$
2. ALL DRAFT WITHIN TOLERANCE
3. MAX RADII ON ALL CORNERS SHOWN SHARP: 0.10
4. MAX FLASH PERMISSIBLE: 0.1
5. EJECTOR PIN MARKS PERMISSIBLE IF FLUSH TO 0.25 BELOW SURFACE
6. MATERIAL: HOUSING/FINGER SPECIFICATION ENGINEERED FOR MATERIAL WITH THE FOLLOWING PROPERTIES:  
A. FLEXURAL MODULUS = 4,500 TO 9,400 MPa  
PER ASTM TEST D790  
B. ELONGATION AT YIELD = 2.3% OR BETTER  
PER ASTM TEST D638 TYPE V
7. CAVITY SPEC FOR USE ONLY WITH MOLEX BLADE TERMINAL PART NUMBERS (EXCEPT P/N'S FOR UNSEALED APPLICATIONS) SPECIFIED ELSEWHERE ON THIS DRAWING

|  |  |   |  |                                       |                                      |  |                                    |                              |                     |
|--|--|---|--|---------------------------------------|--------------------------------------|--|------------------------------------|------------------------------|---------------------|
| <b>ENTER DESCRIPTION</b><br>EC NO: UAU2010-0107<br>DRAWN: FERUGSON 2009/08/18<br>CHKD: A.DHIR 2009/08/19<br>APPR: B.MOSER 2009/08/20<br>REV: C10 | <b>QUALITY SYMBOLS</b><br>$\nabla=0$<br>$\nabla=0$ | <b>GENERAL TOLERANCES (UNLESS SPECIFIED)</b>  |  | <b>DIMENSION STYLE</b><br>MM ONLY     | <b>SCALE</b><br>8:1                  | <b>DESIGN UNITS</b><br>METRIC          | THIRD ANGLE PROJECTION             |                              |                     |
|  |  | 4 PLACES $\pm$ --- $\pm$ ---<br>3 PLACES $\pm$ --- $\pm$ ---<br>2 PLACES $\pm 0.1$ $\pm$ ---<br>1 PLACE $\pm 0.3$ $\pm$ ---   | mm INCH<br>$\pm$ --- $\pm$ ---<br>$\pm 0.1$ $\pm$ ---<br>$\pm 0.3$ $\pm$ --- | DRAWN BY DATE<br>L.PULLIAM 2006/01/31 | CHECKED BY DATE<br>A.DHIR 2006/02/01 | APPROVED BY DATE<br>B.MOSER 2006/02/02 | TITLE<br>MX150 15MM BLADE TERMINAL | DOCUMENT NO.<br>SD-33000-001 | SHEET NO.<br>5 OF 5 |
|  |  | ANGULAR $\pm 3^\circ$   |  | MATERIAL NO.<br>SEE TABLE             | MOLEX INCORPORATED                   |  |                                    |                              |                     |
|  |  | THIS DRAWING CONTAINS INFORMATION THAT IS PROPRIETARY TO MOLEX INCORPORATED AND SHOULD NOT BE USED WITHOUT WRITTEN PERMISSION |  |                                       |                                      |  |                                    |                              |                     |