

AVIAQUIP

NAS6203 THRU NAS6220 SUPERSEDING NAS1103 THRU NAS1120

www.DataSheet4U.com

BOLT, HEX HEAD, CLOSE TOLERANCE, ALLOY STEEL SHORT THREAD

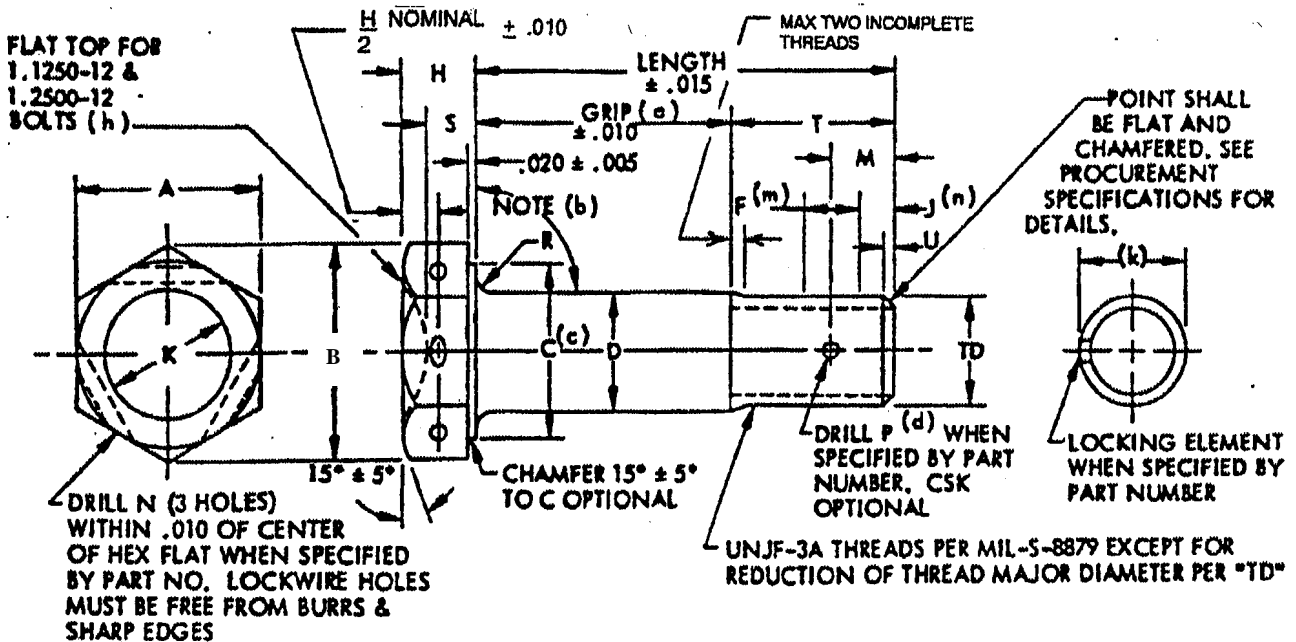
GRIP DASH NO.	GRIP ±.010	LENGTH = ± .015												
		BASIC NUMBER & THREAD SIZE												
		NAS6203 .1900-32	NAS6204 .2500-28	NAS6205 .3125*24	NAS6206 .3780-24	NAS6207 .4375-20	NAS6208 .5000-20	NAS6209 .5625-18	NAS6210 .6250-18	NAS6212 .7500-16	NAS6214 .8750-14	NAS6216 .1.0000-12	NAS6218 1.1250-12	NAS6220 1.2500-12
1	.062	.385	.432	.500	.516	.590	.590	.656	.688	.728	.821	.957	1.051	1.145
2	.125	.448	.495	.563	.579	.653	.653	.719	.751	.791	.884	1.020	1.114	1.208
3	.188	.511	.558	.626	.642	.716	.716	.782	.814	.854	.947	1.083	1.177	1.271
4	.250	.573	.620	.688	.704	.778	.778	.844	.876	.916	1.009	1.145	1.239	1.333
5	.312	.635	.682	.750	.766	.840	.840	.906	.938	.978	1.071	1.207	1.301	1.395
6	.375	.698	.745	.813	.829	.903	.903	.969	1.001	1.041	1.134	1.270	1.364	1.458
7	.438	.761	.808	.876	.892	.966	.966	1.032	1.064	1.104	1.197	1.333	1.427	1.521
8	.500	.823	.870	.938	.954	1.028	1.028	1.094	1.126	1.166	1.259	1.395	1.489	1.583
9	.562	.885	.932	1.000	1.016	1.090	1.090	1.156	1.188	1.228	1.321	1.457	1.551	1.645
10	.625	.948	.995	1.063	1.079	1.153	1.153	1.219	1.251	1.291	1.384	1.520	1.614	1.708
11	.688	1.011	1.058	1.126	1.142	1.216	1.216	1.282	1.324	1.354	1.447	1.583	1.677	1.771
12	.750	1.073	1.120	1.188	1.204	1.278	1.278	1.344	1.376	1.416	1.509	1.645	1.739	1.833
13	.812	1.135	1.182	1.250	1.266	1.340	1.340	1.406	1.438	1.478	1.571	1.707	1.801	1.895
14	.875	1.198	1.245	1.313	1.329	1.403	1.403	1.469	1.501	1.541	1.634	1.770	1.864	1.958
15	.938	1.261	1.308	1.376	1.392	1.466	1.466	1.532	1.564	1.604	1.697	1.833	1.927	2.021
16	1.000	1.323	1.370	1.438	1.454	1.528	1.528	1.594	1.626	1.666	1.759	1.895	1.989	2.083
17	1.062	1.385	1.432	1.500	1.516	1.590	1.590	1.656	1.688	1.728	1.821	1.957	2.051	2.145
18	1.125	1.448	1.495	1.563	1.579	1.653	1.653	1.719	1.751	1.791	1.884	2.020	2.114	2.208
19	1.188	1.511	1.558	1.626	1.642	1.716	1.716	1.782	1.814	1.854	1.947	2.083	2.177	2.271
20	1.250	1.573	1.620	1.688	1.704	1.778	1.778	1.844	1.876	1.916	2.009	2.145	2.239	2.333
21	1.312	1.635	1.682	1.750	1.766	1.840	1.840	1.906	1.938	1.978	2.071	2.207	2.301	2.395
22	1.375	1.698	1.745	1.813	1.829	1.903	1.903	1.969	2.001	2.041	2.134	2.270	2.364	2.458
23	1.438	1.761	1.808	1.876	1.892	1.966	1.966	2.032	2.064	2.104	2.197	2.333	2.427	2.521
24	1.500	1.823	1.870	1.938	1.954	2.028	2.028	2.094	2.126	2.166	2.259	2.395	2.489	2.583
25	1.562	1.885	1.932	2.000	2.016	2.090	2.090	2.156	2.188	2.228	2.321	2.457	2.551	2.645
26	1.625	1.948	1.995	2.063	2.079	2.153	2.153	2.219	2.251	2.291	2.384	2.520	2.614	2.708
27	1.688	2.011	2.058	2.126	2.142	2.216	2.216	2.282	2.314	2.354	2.447	2.583	2.677	2.771
28	1.750	2.073	2.120	2.188	2.204	2.278	2.278	2.344	2.376	2.416	2.509	2.645	2.739	2.833
29	1.812	2.135	2.182	2.250	2.266	2.340	2.340	2.406	2.438	2.478	2.571	2.707	2.801	2.895
30	1.875	2.198	2.245	2.313	2.329	2.403	2.403	2.469	2.501	2.541	2.634	2.770	2.864	2.958
31	1.938	2.261	2.308	2.376	2.392	2.466	2.466	2.532	2.564	2.604	2.697	2.833	2.927	3.021
32	2.000	2.323	2.370	2.438	2.454	2.528	2.528	2.594	2.626	2.666	2.759	2.895	2.989	3.083
34	2.125	2.448	2.495	2.563	2.579	2.653	2.653	2.719	2.751	2.791	2.884	3.020	3.114	3.208
36	2.250	2.573	2.620	2.688	2.704	2.778	2.778	2.844	2.876	2.916	3.009	3.145	3.239	3.333
38	2.375	2.698	2.745	2.813	2.829	2.903	2.903	2.969	3.001	3.041	3.134	3.270	3.364	3.458
40	2.500	2.823	2.870	2.938	2.954	3.028	3.028	3.094	3.126	3.166	3.259	3.395	3.489	3.583
42	2.625	2.948	2.995	3.063	3.079	3.153	3.153	3.219	3.251	3.291	3.384	3.520	3.614	3.708
44	2.750	3.073	3.120	3.188	3.204	3.278	3.278	3.344	3.376	3.416	3.509	3.645	3.739	3.833
46	2.875	3.198	3.245	3.313	3.329	3.403	3.403	3.469	3.501	3.541	3.634	3.770	3.864	3.958
48	3.000	3.323	3.370	3.438	3.454	3.528	3.528	3.594	3.626	3.666	3.759	3.895	3.989	4.083
50	3.125	3.448	3.495	3.563	3.579	3.653	3.653	3.719	3.751	3.791	3.884	4.020	4.114	4.208
52	3.250	3.573	3.620	3.688	3.704	3.778	3.778	3.844	3.876	3.916	4.009	4.145	4.239	4.333
54	3.375	3.698	3.745	3.813	3.829	3.903	3.903	3.969	4.001	4.041	4.134	4.270	4.364	4.458
56	3.500	3.823	3.870	3.938	3.954	4.028	4.028	4.094	4.126	4.166	4.259	4.395	4.489	4.583
58	3.625	3.948	3.995	4.063	4.079	4.153	4.153	4.219	4.251	4.291	4.384	4.520	4.614	4.708
60	3.750	4.073	4.120	4.188	4.204	4.278	4.278	4.344	4.376	4.416	4.509	4.645	4.739	4.833
62	3.875	4.198	4.245	4.313	4.329	4.403	4.403	4.469	4.501	4.541	4.634	4.770	4.864	4.958
64	4.000	4.323	4.370	4.438	4.454	4.528	4.528	4.594	4.626	4.666	4.759	4.895	4.989	5.083
66	4.125	4.448	4.495	4.563	4.579	4.653	4.653	4.719	4.751	4.791	4.884	5.020	5.114	5.208
68	4.250	4.573	4.620	4.688	4.704	4.778	4.778	4.844	4.876	4.916	5.009	5.145	5.239	5.333
70	4.325	4.698	4.745	4.813	4.829	4.903	4.903	4.969	5.001	5.041	5.134	5.270	5.364	5.458
72	4.500	4.823	4.870	4.938	4.954	5.028	5.028	5.094	5.126	5.166	5.259	5.395	5.489	5.583
74	4.625	4.948	4.995	5.063	5.079	5.153	5.153	5.219	5.251	5.291	5.384	5.520	5.614	5.708
76	4.750	5.073	5.120	5.188	5.204	5.278	5.278	5.344	5.376	5.416	5.509	5.645	5.739	5.833
78	4.875	5.198	5.245	5.313	5.329	5.403	5.403	5.469	5.501	5.541	5.634	5.770	5.864	5.958
80	5.000	5.323	5.370	5.438	5.454	5.528	5.528	5.594	5.626	5.666	5.759	5.895	5.989	6.083
82	5.125	5.448	5.495	5.563	5.579	5.653	5.653	5.719	5.751	5.791	5.884	6.020	6.114	6.208
84	5.250	5.573	5.620	5.688	5.704	5.778	5.778	5.844	5.876	5.916	6.009	6.145	6.239	6.333
86	5.375	5.698	5.745	5.813	5.829	5.903	5.903	5.969	6.001	6.041	6.134	6.270	6.364	6.458
88	5.500	5.823	5.870	5.938	5.954	6.028	6.028	6.094	6.126	6.166	6.259	6.395	6.489	6.583
90	5.625	5.948	5.995	6.063	6.079	6.153	6.153	6.219	6.251	6.291	6.384	6.520	6.614	6.708
92	5.750	6.073	6.120	6.188	6.204	6.278	6.278	6.344	6.376	6.416	6.509	6.645	6.739	6.833
94	5.875	6.198	6.245	6.313	6.329	6.403	6.403	6.469	6.501	6.541	6.634	6.770	6.864	6.958
96	6.000	6.323	6.370	6.438	6.454	6.528	6.528	6.594	6.626	6.666	6.759	6.895	6.989	7.083

Product information and part numbers shown on these pages are not guaranteed correct by AVIAQUIP PTY. LTD and are subject to change without notice.

AVIAQUIP

www.DataSheet4U.com

NAS6603 THRU NAS6620 BOLT, HEX HEAD, CLOSE TOLERANCE, ALLOY STEEL, LONG THREAD SELF-LOCKING & NON LOCKING



HEAD MARKINGS : Basic number plus grip dash number plus "D"

"L" or "P" when applicable plus manufacturer's symbol
Raised or depressed .010 max. Arrangement optional
"D" identifies bolt with drilled shank
"L" identifies bolt with optional locking elements

BASIC NUMBER	THREAD	A		B MIN	C DIA MIN	D DIAMETER				"H" +.015 - .000	"T" REF	"TD" DIA	
		MAX	MIN			BEFORE PLATE		AFTER PLATE				MAX	MIN
						MAX	MIN	MAX	MIN				
NAS6603	.1900-32	.376	.367	.410	.335	.1850	.1845	.1895	.1885	.110	.345	.184	.181
NAS6604	.2500-28	.439	.429	.480	.398	.2450	.2445	.2495	.2485	.125	.425	.244	.241
NAS6605	.3125-24	.502	.492	.552	.460	.3075	.3070	.3120	.3110	.156	.469	.306	.302
NAS6606	.3750-24	.564	.554	.623	.523	.3700	.3695	.3745	.3735	.188	.578	.368	.364
NAS6607	.4375-20	.690	.678	.764	.648	.4325	.4320	.4370	.4360	.219	.694	.431	.426
NAS6608	.5000-20	.752	.741	.836	.710	.4950	.4645	.4995	.4985	.250	.735	.493	.488
NAS6609	.5625-18	.877	.865	.978	.835	.5570	.5565	.5615	.5605	.281	.840	.555	.550
NAS6610	.6250-18	.940	.928	1.050	.898	.6195	.6190	.6240	.6230	.312	.902	.618	.612
NAS6612	.7500-16	1.065	1.052	1.191	1.023	.7445	.7440	.7490	.7480	.375	1.041	.743	.737
NAS6614	.8750-14	1.252	1.239	1.405	1.210	.8695	.8690	.8740	.8730	.438	1.184	.868	.861
NAS6616	1.0000-12	1.440	1.427	1.619	1.398	.9945	.9940	.9990	.9980	.500	1.309	.993	.986
NAS6618	1.1250-12	1.627	1.614	1.832	1.585	1.1195	1.1195	1.1240	1.1225	.562	1.458	1.118	1.111
NAS6620	1.2500-12	1.814	1.801	2.046	1.772	1.2445	1.2445	1.2490	1.2475	.625	1.646	1.243	1.236

MATERIAL : ALLOY STEEL - 4140, 4340, E4340 or 8740.

Locking element - plastic per MIL-F-18240 and CPL18240

HEAT TREAT : 160-180 KSI Flu; 95 KSI min ultimate shear per MIL-H-6875.

FINISH: Cadmium Plate per QQ-P-416 Type 11 Class 2

Embrittlement requirements per NAS4002

CHROMIUM PLATED BOLTS : Chromium Plate per QQ-C-320 class 2 *on shank only* - all other surfaces cadmium plated. Chromium in thread run-out permitted. Chromium plated bolts not available with grip 1 or number 2.

EXAMPLES OF PART NUMBERS :

NAS6604-10 Bolt .2500-28 thread .625 grip undrilled non-locking cadmium plated

NAS6604D10 .2500-28 thread, .625 grip drilled shank undrilled head non-locking cad plated

NAS6604DH10 .2500-28 thread .625 grip drilled shank drilled head

Product information and part numbers shown on these pages are not guaranteed correct by AVIAQUIP PTY. LTD and are subject to change without notice.