

New Jersey Semi-Conductor Products, Inc.

20 STERN AVE.
 SPRINGFIELD, NEW JERSEY 07081
 U.S.A.

TELEPHONE: (201) 376-2921
 (212) 227-6000
 FAX: (201) 376-8960

PARAMETERS

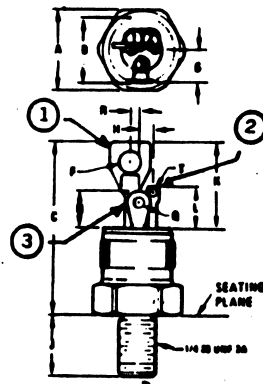
2N6172

SCR, V(DRM) = 200 V TO 299.9 V

Description: SCR, V(DRM) = 200 V to 299.9 V

Manufacturer.....	
Mil/High-Rel? (Y/N).....	
V(drm) Max.....	200
I _t (stat) Max. (A).....	117
@Temp. (test) (°C).....	85#
Supp Curr. I(TSM).....	350%
Firing Char-Igt Max.....	80
Firing Char-Vgt Max.....	3.
I _d (off) Max. (A).....	5.5m
@Temp. (test) (°C).....	100
I(h) Max. (A).....	90
V(T) Max.....	1.8
@I _t (A).....	69
Dv/Dt Worst Case.....	
t(switch) Off Typ. Time (S)...	1.5u
@I _t (test) (A).....	41
t(switch) Off Typ. Time (S)...	
Oper. Temp (°C) Min.....	-40
Oper. Temp (°C) Max.....	100u
Pkg Style.....	StR-1/4
Surface Mounted (Y/N).....	N

u Junction Temperature # Case Temperature % @ above 125°C 1 I_t (Average)
 2 I_t(rms) Measured at < 25°C



Quality Semi-Conductors