

Switch with IEC Connector Compact Size

# C Series



**UL Recognized  
CSA Certified  
VDE Approved**



## C Series

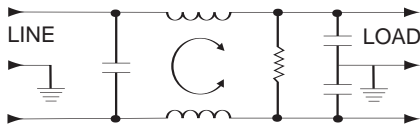
Two function power entry module combining a DPST switch and an IEC 320 power line connector. Compact packaging allows a smaller panel cutout with choice of snap-in or flange mounting. Available with general purpose filtering (F models - CFS, CFE), medical application filtering (H models - CHS, CHE) or unfiltered (CS, CE). Terminals allow for easy connection to any wiring scheme. Preconnected terminals from line to switch are available (B Models - CBS, CBE) for reducing OEM wiring time.

The medical versions (H models) are designed specifically for health care applications. Their extremely low leakage current allows compliance with UL544 and UL2601 as well as CSA22.2 health care specifications for use with both patient and non-patient care equipment. For more information on UL544 or UL2601, see Appendix C.

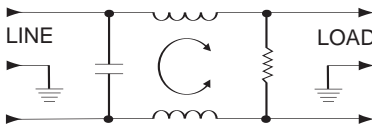
*Note: When using the models with an IEC connector, remember that the leakage current of the companion line cord, GA400, is more significant than that of the filter - which may disqualify this line cord from use in patient care applications.*

### Electrical Schematics

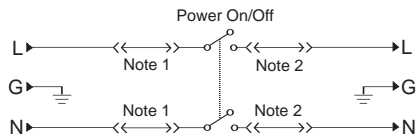
#### F Models (CFS, CFE)



#### H Models (CHS, CHE)



#### B Models (CBS, CBE)



Note 1: Jumpers provided on CBS and CBE versions only.  
Note 2: Location of optional filter

Resistor location for reference only.

### Specifications

Maximum leakage current, each line to ground: †

	<u>F Models</u>	<u>H Models</u>
@120 VAC 60 Hz:	.25 mA	2 µA
@250 VAC 50 Hz:	.40 mA	5 µA

Hipot rating (one minute):

line-to-ground	2250 VDC
line-to-line	1450 VDC

Operating frequency:

50/60 Hz

Rated voltage:

250 VAC

Operating voltages:

115/230 VAC

Switch:

Double-insulated rated for 10,000 operations at full load.  
51 Amp inrush capability.

Unfiltered Push-on Force:

18 lb/80 N

Minimum insertion loss in dB:

Line-to-ground in 50 ohm circuit

Current Rating	Frequency MHz						
	0.05	0.15	0.5	1	5	10	30
<b>F Models</b>							
1A	10	26	46	48	46	47	46
3A	8	16	32	36	43	48	50
6A	4	11	22	27	36	41	50
10A	1	4	14	18	27	33	42
<b>H Models</b>							
1A	16	21	37	44	26	21	10
3A	9	14	31	32	26	24	14
6A	4	10	22	23	19	18	13
10A	2	6	10	15	11	11	9

Line-to-line in 50 ohm circuit

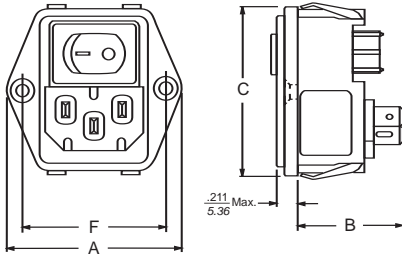
Current Rating	Frequency MHz						
	0.05	0.15	0.5	1	5	10	30
<b>F Models</b>							
1A	1	3	13	28	62	67	42
3A	2	6	14	23	65	65	67
6A	2	6	14	27	46	48	58
10A	1	7	14	23	42	44	62
<b>H Models</b>							
1A	1	6	13	29	38	42	26
3A	1	5	10	22	36	34	36
6A	1	5	14	20	31	33	37
10A	1	4	11	19	32	37	38

Switch with IEC Connector Compact Size (Continued)

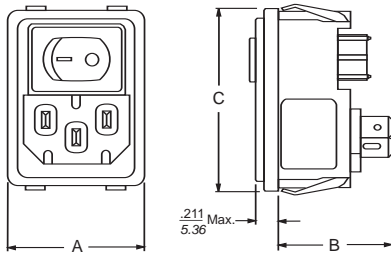
# C Series

## Case Styles

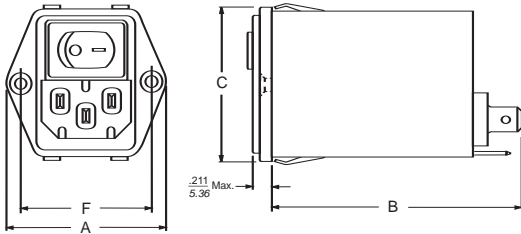
### CE, CBE\*



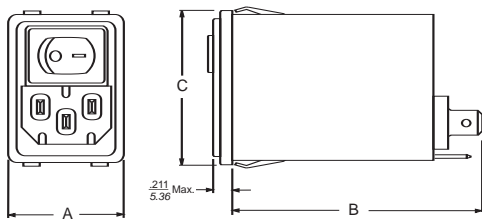
### CS, CBS\*



### CFE, CHE

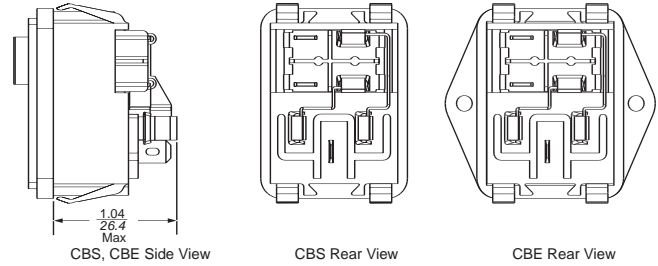


### CFS, CHS



Typical Dimensions:  
Mounting Holes: .13 [3.3] Dia. (2) with .23 Dia. x 90° Counter sunk  
Terminals: .250 [6.35] (3)  
Holes: .07 [1.8] Dia.

## CBS, CBE Pre-Connected Terminals



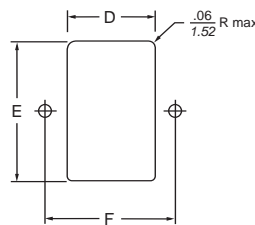
## Case Dimensions

Part No.	A (max)	B (max)	C (max)	D $\pm .006$ $\pm .152$	E $\pm .006$ $\pm .152$	F $\pm .006$ $\pm .152$
CS, CBS	<b>1.23</b> 31.24	<b>.97</b> 24.64	<b>1.62</b> 41.17	<b>1.06</b> 26.92	<b>1.54</b> 39.12	—
CE, CBE	<b>1.74</b> 44.2	<b>.97</b> 24.64	<b>1.62</b> 41.17	<b>1.06</b> 26.92	<b>1.54</b> 39.12	<b>1.417</b> 36.0
CFS, CHS	<b>1.23</b> 31.24	<b>2.53</b> 64.26	<b>1.62</b> 41.17	<b>1.12</b> 28.5	<b>1.54</b> 39.12	—
CFE, CHE	<b>1.74</b> 44.2	<b>2.53</b> 64.26	<b>1.62</b> 41.17	<b>1.12</b> 28.5	<b>1.54</b> 39.12	<b>1.417</b> 36.0

## Part Numbers

1CFS1	1CFE1	1CHS1	1CHE1
3CFS1	3CFE1	3CHS1	3CHE1
6CFS1	6CFE1	6CHS1	6CHE1
10CFS1	10CFE1	10CHS1	10CHE1
10CS1	10CE1	10CBS1	10CBE1

## Recommended Panel Cutout



Panel Cutout for thickness of .031-.098 [.8-2.5]. Not recommended for plastic panels. For snap-in applications, the D sides of the cutout must have a .02 [.508] radius on the installation side. Snap-in models allow front mounting only.