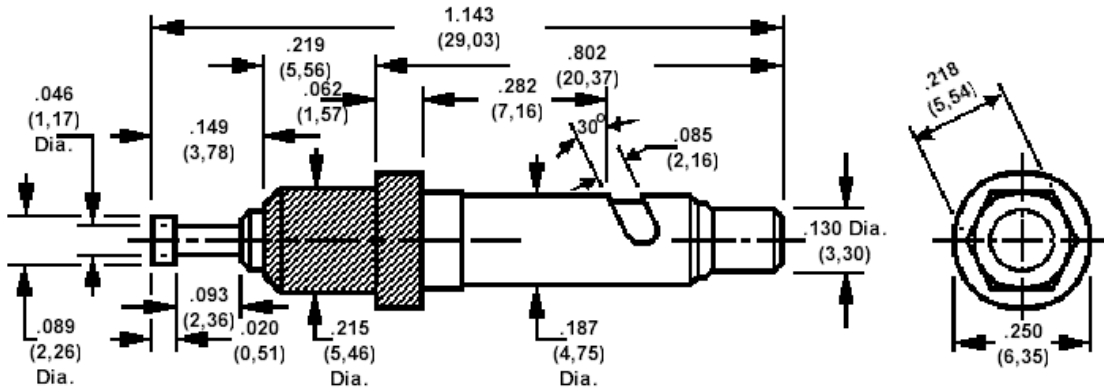


## 410-2405 Component Clip, .085 (2,16) Slot, Press mount, Insulated

Recommended mounting hole .203 (5,16)



Recommended Lead Wire Sizes - #19 AWG (.036) (0,91) Min. Thru #13 AWG (.072) (1,83) Max.

### How to order code

**410-2405-01-05-00**

Basic Part No

| Basic Part Number | For Panel Thickness        | Flashover at Sea Level (VRMS) | Capacitance (pF) |
|-------------------|----------------------------|-------------------------------|------------------|
| 410-2405-01       | .040 (1,02) to .125 (3,18) | 2500                          | 1.0              |

| Component | Material    | Finish         |
|-----------|-------------|----------------|
| Insulator | Teflon      | White          |
| Housing   | Brass       | Electro Solder |
| Plunger   | Brass       | Electro Solder |
| Spring    | Cres. Steel | Passivated     |

Teflon is a registered trademark of Dupont