

RoHS Compliant Product  
A suffix of "-C" specifies halogen and lead free

## FEATURES

- High reliability
- Suitable for high packing density layout
- Fast reverse recovery time :  $T_{RR} = 1.5\text{ns}$  (typ.)

## PACKAGING INFORMATION

Weight: 0.0078g (Approx.)

## MARKING CODE

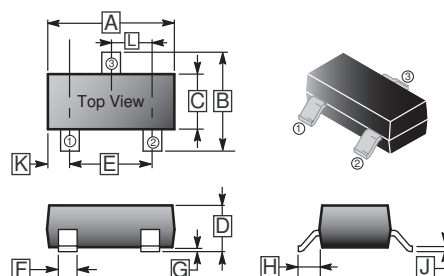
N

A4

## PACKAGE INFORMATION

Package	MPQ	Leader Size
SOT-23	3K	7 inch

## SOT-23



REF.	Millimeter		REF.	Millimeter	
	Min.	Max.		Min.	Max.
A	2.80	3.04	G	0.09	0.18
B	2.10	2.55	H	0.45	0.60
C	1.20	1.40	J	0.08	0.177
D	0.89	1.15	K	0.6 REF.	
E	1.80	2.00	L	0.89	1.02
F	0.30	0.50			

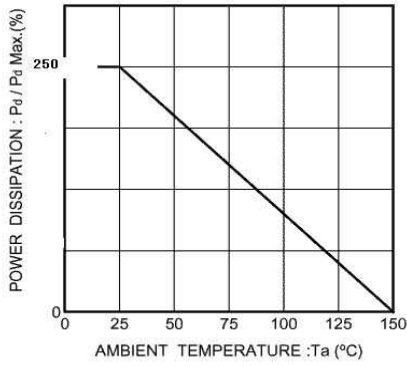
## ABSOLUTE MAXIMUM RATINGS ( $T_A=25^\circ\text{C}$ unless otherwise specified)

Parameter	Symbol	Ratings	Unit
Peak Reverse Voltage	$V_{RM}$	80	V
DC Reverse Voltage	$V_R$	80	V
Maximum (Peak) Forward Current	$I_{FM}$	300	mA
Average Forward Current	$I_O$	100	mA
Power Dissipation	$P_D$	250	mW
Junction, Storage Temperature	$T_J, T_{STG}$	150, -55~150	$^\circ\text{C}$

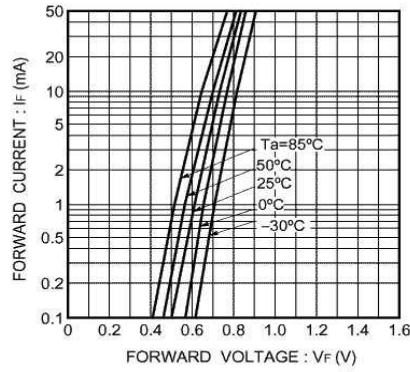
## ELECTRICAL CHARACTERISTICS ( $T_A=25^\circ\text{C}$ unless otherwise specified)

Parameter	Symbol	Min.	Typ.	Max.	Unit	Test Conditions
Reverse Breakdown Voltage	$V_{(BR)}$	80	-	-	V	$I_R=100\mu\text{A}$
Forward Voltage	$V_F$	-	-	1.2	V	$I_F=100\text{mA}$
Reverse Voltage Leakage Current	$I_R$	-	-	0.1	$\mu\text{A}$	$V_R=70\text{V}$
Diode Capacitance	$C_D$	-	-	3.5	pF	$V_R=6\text{V}, f=1\text{MHz}$
Reverse Recovery Time	$T_{RR}$	-	-	4.0	ns	$V_R=6\text{V}, I_F=5\text{mA}$

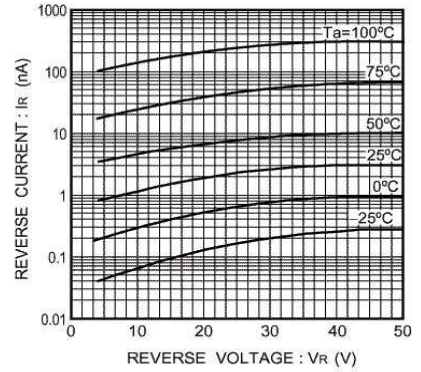
**CHARACTERISTIC CURVES**



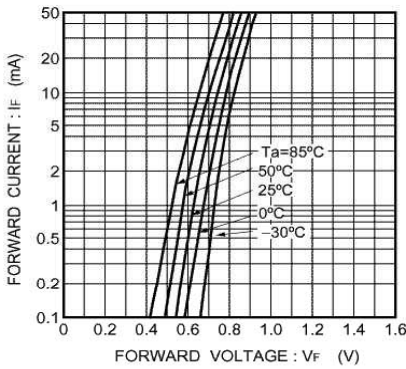
Power attenuation curve



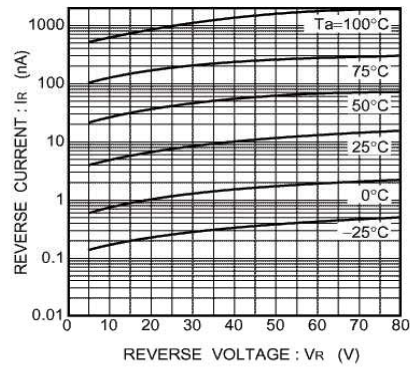
Forward characteristics (P Type)



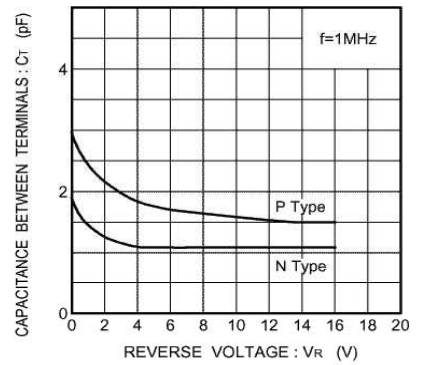
Reverse characteristics (P Type)



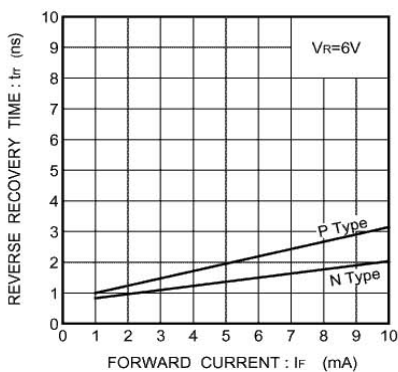
Forward characteristics (N Type)



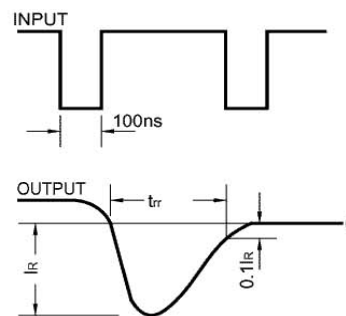
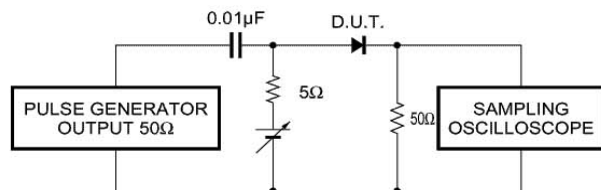
Reverse characteristics (N Type)



Capacitance between terminals characteristics



Reverse recovery time



Reverse recovery time ( $t_{rr}$ ) measurement circuit