

PLEASE CHECK WWW.MOLEX.COM FOR LATEST PART INFORMATION

Part Number: [0475350001](#)
Status: **Active**
Description: 2.54mm (.100") Pitch SIM Card Connector, Dome Type, 6 Circuits, Housing Height 0.95mm (.037"), Lead Free

Documents:

[3D Model](#) [Product Specification PS-47535-001 \(PDF\)](#)
[Drawing \(PDF\)](#) [RoHS Certificate of Compliance \(PDF\)](#)

General

Product Family	Memory Card Sockets
Series	47535
Button Type	N/A
Comments	Housing Height: 0.95mm (.037")
Component Type	Header/Socket (Host)
Product Name	SIM
Type	N/A

Physical

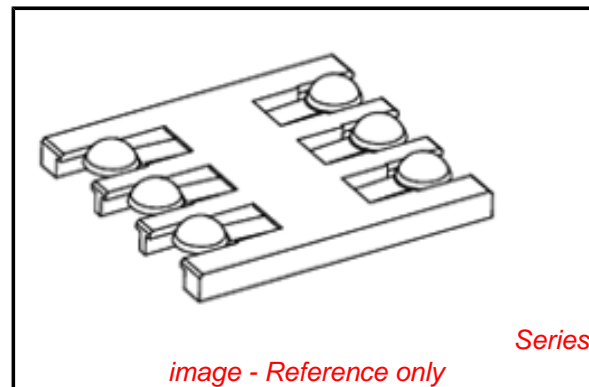
Card Detection Switch	No
Circuits (Loaded)	6
Circuits (maximum)	6
Color - Resin	Black
Durability (mating cycles max)	500
Ejector Button Side	No Ejector Button Present
Entry Angle	Horizontal, Side Entry, Vertical
Keying to Mating Part	None
Material - Metal	Copper Alloy
Material - Plating Mating	Gold
Material - Plating Termination	Gold
Material - Resin	High Temperature Thermoplastic
PCB Locator	No
PCB Mounting Side	Normal
PCB Retention	None
Packaging Type	Embossed Tape on Reel
Pitch - Mating Interface (in)	0.100 In
Pitch - Mating Interface (mm)	2.54 mm
Pitch - Term. Interface (in)	0.100 In
Pitch - Term. Interface (mm)	2.54 mm
Plating min: Mating (µin)	30
Plating min: Mating (µm)	0.75
Plating min: Termination (µin)	2
Plating min: Termination (µm)	0.05
Ports	0
Temperature Range - Operating	-20°C to +70°C
Termination Interface: Style	Surface Mount

Electrical

Current - Maximum per Contact	0.5A
Shielded	No
Voltage - Maximum	50V DC
Voltage Key	N/A

Solder Process Data

Duration at Max. Process Temperature (seconds)	3
Lead-free Process Capability	Reflow Capable (SMT only)



EU RoHS

**ELV and RoHS
Compliant**
REACH SVHC
 Not Reviewed
**Halogen-Free
Status**

China RoHS



**Need more information on product
environmental compliance?**

Email productcompliance@molex.com
 For a multiple part number RoHS Certificate of Compliance, [click here](#)

Please visit the [Contact Us](#) section for any non-product compliance questions.

Search Parts in this Series

[47535Series](#)

Mates With

Standard SIM Card

Use With

SIM Card

Max. Cycles at Max. Process Temperature	1
Process Temperature max. C	255

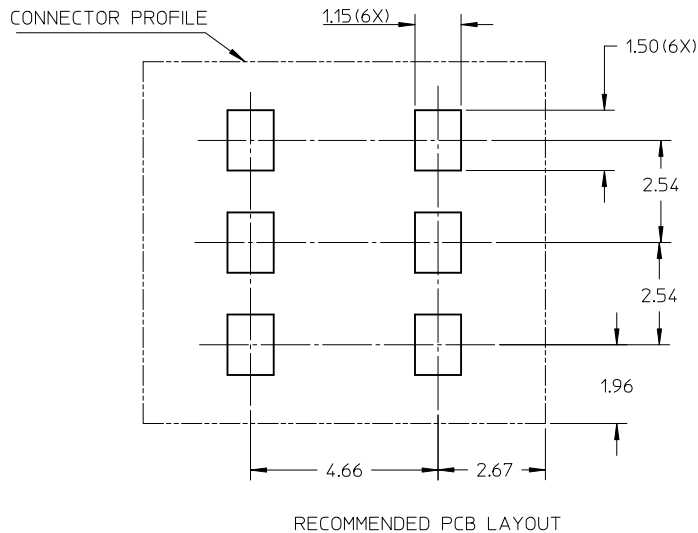
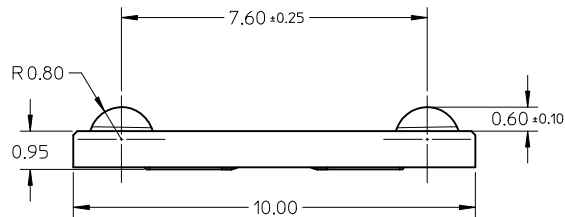
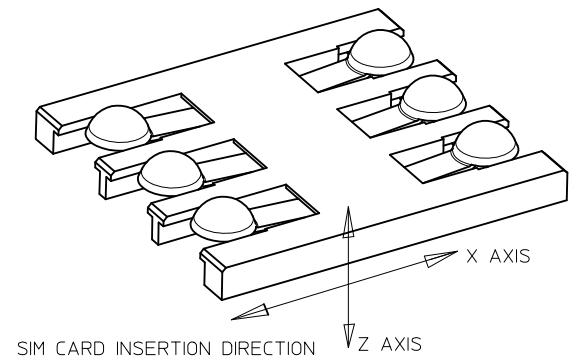
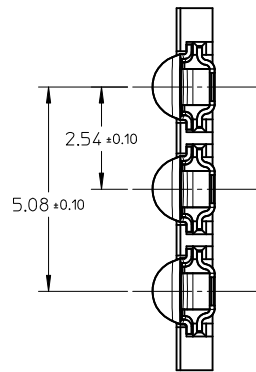
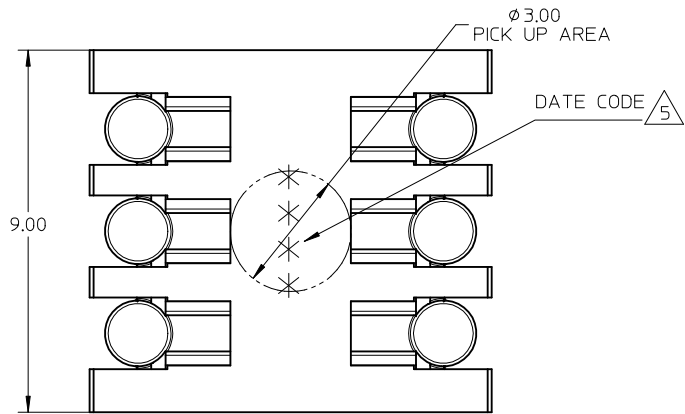
Material Info

Reference - Drawing Numbers

Product Specification	PS-47535-001
Sales Drawing	SD-47535-001

This document was generated on 03/31/2010

PLEASE CHECK WWW.MOLEX.COM FOR LATEST PART INFORMATION



NOTE:

- 1.MATERIAL:
HOUSING:LCP,UJ 94V-0,COLOR IS BLACK.
TERMINAL:COPPER ALLOY,THICKNESS IS 0.12mm.
- 2.FINISH:
TERMINAL:
CONTACT AREA:SELECTIVE 0.75 TO 1.25 MICRON GOLD .
SOLDER TAIL:0.05 to 0.125 MICRON GOLD FLASH.
UNDERPLATING ALL OVER 1.25 TO 3.75 MICRON NICKEL.
- 3.COPLANARITY:0.1MM MAX. AMONG THESE TERMINAL SOLDER TAILS.
- 4.PRODUCT SPECIFICATION:PS-47535-***.
- 5.DATE CODE(4 DIGITS)
EXAMPLE
* * * *
DAY COUNTED FROM 2006/01/15 → 6015
FIRST DAY OF THE YEAR 2006/02/10 → 6041
YEAR 2007/03/10 → 7069
- 6.THIS PART 475350001 COMPLIANT TO RoHS DIRECTIVE 2002/95/EC AND ELV 2000/53/EC.

NEW CONTACT HEIGHT EC NO: SZ010-0674 DRW:KHLIM 2010/03/22 CHKD:JTAN 2010/04/12 APPR:SKTOH 2010/04/19	QUALITY SYMBOLS $\nabla F=0$ $\nabla F=0$ $\nabla F=0$	GENERAL TOLERANCES (UNLESS SPECIFIED) mm INCH 4 PLACES ± --- ± --- 3 PLACES ± --- ± --- 2 PLACES ± 0.13 ± --- 1 PLACE ± --- ± --- ANGULAR ± 1°	DIMENSION STYLE MM ONLY DRAWN BY DATE HPO IAN 2008/03/17 CHECKED BY DATE RZHANG 2008/03/17 APPROVED BY DATE SKTOH 2010/04/19	SCALE NTS DESIGN UNITS METRIC THIRD ANGLE PROJECTION	TITLE EMERALD SIM CONNECTOR	
	MATERIAL NO. 475350001	DOCUMENT NO. SD-47535-001	SHEET NO. 1 OF 1			
	DRAFT WHERE APPLICABLE MUST REMAIN WITHIN DIMENSIONS			SIZE A3	THIS DRAWING CONTAINS INFORMATION THAT IS PROPRIETARY TO MOLEX INCORPORATED AND SHOULD NOT BE USED WITHOUT WRITTEN PERMISSION	
	MOLEX INCORPORATED					