

HIOKI

New

**& Improved
CAT IV 600V**

3282 (1000A AC, ø46mm max.)

3281 (600 A AC, ø33mm max.)

DIGITAL CLAMP ON HITESTER

Field measuring instruments

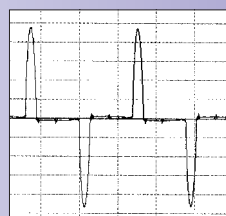


Beats distorted waveform

Easy to clamp!

Multi function!

Non-fuse type!



Current waveform of the inverter (primary side)

True RMS

NORMAL 3.76 A

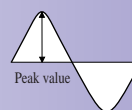
MEAN value method 3261

The MEAN value is 40% lower than the true RMS

AUTO ~ 6.35 RMS A

True RMS method 3281/3282

Peak Value



Peak value

AUTO ~ 18.9 PEAK A

Peak value

Crest factor

AUTO ~ 2.99 C.F.

Crest factor

= Peak value/ RMS value
= 18.99 A/6.35 A
= 2.99



3281

CAT IV 600V



ISO 9001
JMI-0216



ISO14001
JQA-E-90091



<http://www.hioki.co.jp/>

HIOKI company overview, new products, environmental considerations and other information are available on our website.

Actual-size

Designed for ease of use on the site !

The HAND STRAP fits the device neatly to the hand



The HAND STRAP not only prevents the device from being dropped when working, but also effectively imparts strength when parting crowded wiring to clamp.

The photograph is 3281.

WARNING

Inspect the unit and check that it is operating correctly before use. When carrying out measurement on live lines, wear proper protective gear, insulating rubber gloves, insulating rubber boots and safety helmet, and use extreme caution to avoid electric shock accidents.

DANGER



- In order to prevent short-circuits and injury, use the clamp product on electrical circuits with a voltage less than the maximum operation circuit voltage.
- In order to prevent short-circuits and injury when the clamp core tip is open, do not use bare conductors.

Prevents careless mistakes

- Auto-power off to conserve battery life
- Non-fuse type protects up to 600V AC



Even if voltage is mistakenly applied to the resistance range, the internal excessive voltage protection element (PTC thermister) protects the circuits for up to 600 V AC.

9462 THERMISTER TEMPERATURE PROBE (optional)



Cord length
approx 1.2 m

- Measuring range: -50 to 150°C/-58 to 302°F
- Measuring accuracy: -50 to 50°C±3°C/50 to 100°C±4°C/100 to 150°C±5°C

Note: the temperature accuracy given above is only the accuracy for the temperature

probe. ±2%rdg.±2°C(°F) is added for the actual accuracy of the 3281/3282 themselves.

Specifications [] in the Specification :3281 23°C±5°C, 80% or less.

Function	Mode	Range	Accuracy	Maximum permissible input
AC current A	RMS Effective value	30.00	±1.0%rdg.±0.7%f.s. (40 to 1 kHz)	600A rms continuous 1700A max.
		300.0	±1.0%rdg.±5dgt.*1 (45 to 66 Hz)	
	PEAK Peak value	1000	±1.0%rdg.±5dgt.*1(45 to 66 Hz)	1000A rms 5 minutes [600A rms continuous 1000A max.]
		[600]	[±1.0%rdg.±5dgt.*1(45 to 66 Hz)]	
AC voltage V	RMS	30.0/600	±5.0%rdg.±5dgt.	600A rms continuous 1700A max.
	PEAK	300	±3.0%rdg.±5dgt.	
Crest factor		30.0	±3.0%rdg.±5dgt.	1000A rms 5 minutes [600A rms continuous 1000A max.]
		[600]	[±3.0%rdg.±5dgt.]	
AC voltage V	RMS	300.0/600	±1.0%rdg.±3dgt.*2(45 to 66 Hz)	600V rms continuous 1000V max.
	PEAK	300/600	±3.0%rdg.±5dgt.	
Frequency Hz		1.00 to 5.00	±10.0%rdg.±5dgt.	Effective in the voltage and current functions
		100.0	±0.3%rdg.±1dgt. (30 to 99.9 Hz)	
		1000	±1.0%rdg.±1dgt. (95 to 1000 Hz)	
Resistance Ω		1k/10.00k	±1.5%rdg.±5dgt.	Overload protection : 600V rms Open terminal voltage: 3.0V DC max. (resistance, continuity functions)
Temperature probe sold separately		°C -50 to 150°C	±2.0%rdg.±2dgt.	
		°F -58 to 302°F	Add the accuracy of the 9462	
continuity		1kΩ	Buzzer sounds at 30 Ω ± 5 Ω or less	
Display		LCD, digital (3000 counts, 999 counts (peak)), bar graph (35 segments)		

*1. 40 to 45Hz , 66 to 1kHz ±1.5%rdg.±5dgt. *2. 40 to 45Hz , 66 to 1kHz ±1.5%rdg.±3dgt.

Measurement accuracy applies to input of at least 10% of the current, voltage and resistance range.

3281 DIGITAL CLAMP ON HIESTER 3282 DIGITAL CLAMP ON HIESTER

(All include 9207-10 TEST LEAD, 9399 CARRYING CASE and HAND STRAP)

Option 9462 THERMISTER TEMPERATURE PROBE

HIOKI

HIOKI E. E. CORPORATION

HEAD OFFICE :

81 Koizumi, Ueda, Nagano, 386-1192, Japan
TEL +81-268-28-0562 / FAX +81-268-28-0568
E-mail: os-com@hioki.co.jp

HIOKI USA CORPORATION :

6 Corporate Drive, Cranbury, NJ 08512 USA
TEL +1-609-409-9109 / FAX +1-609-409-9108
E-mail: hioki@hiokiusa.com

Shanghai Representative Office :

1704 Shanghai Times Square Office
93 Huaihai Zhong Road
Shanghai, 200021, P.R.China
TEL +86-21-6391-0090, 0092
FAX +86-21-6391-0360
E-mail: info@hioki.cn

Accessories



Lead length
approx. 70 cm
CAT IV 600V

9207-10 TEST LEAD



9399 CARRYING CASE

DISTRIBUTED BY