

"High Frequency Ceramic Solutions"

2.6 GHz Balun/Filter Combination

P/N 2595FB39A0050

Detail Specification: 08/14/07

Page 1 of 2

General Specifications

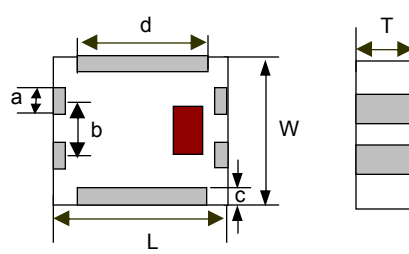
Part Number	2595FB39A0050
Frequency (MHz)	2500 - 2690
Unbalanced Impedance	50 Ω
Balanced Impedance	50 Ω
Insertion Loss	3.2 dB max.
Return Loss	11.73 dB min.
Phase Difference	180° \pm 10
Amplitude Difference	1.5 dB max.
Operating + Storage Temp.	-40 to +85°C
Reel Quantity	3000
Power Capacity	1 watt max.

Attenuation (dB)	45 min. @ 824~960MHz
	40 min. @ 1650~1990MHz
	25 min. @ 2110~2170MHz
	25 min. @ 3300~3600MHz
	28 min. @ 4150~4500MHz
MSL	2 *

* - 1 yr shelf life in bag; 1 week shelf life out of bag;
Vacuum reseal unused reel

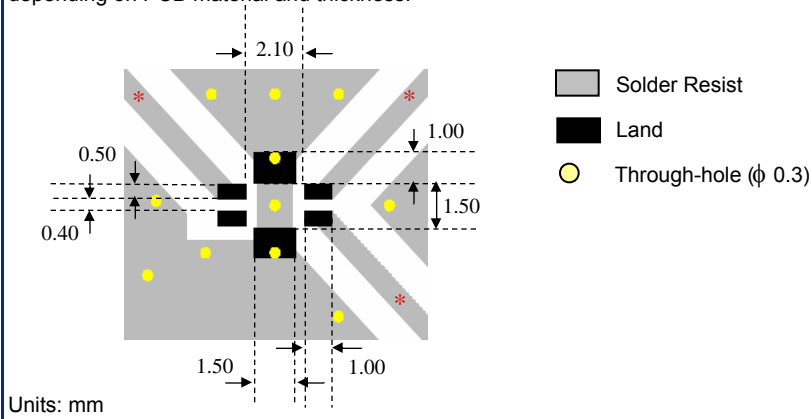
Mechanical Dimensions

	In	mm
L	0.098 \pm 0.008	2.50 \pm 0.20
W	0.079 \pm 0.008	2.00 \pm 0.20
T	0.043 \pm 0.004	1.10 \pm 0.10
a	0.016 \pm 0.008	0.40 \pm 0.20
b	0.031 \pm 0.008	0.80 \pm 0.20
c	0.012 +.004/-.008	0.30 +0.1/-0.2
d	0.075 \pm 0.008	1.90 \pm 0.20



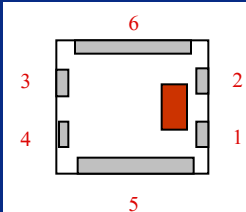
Mounting Considerations

* Line width should be designed to match specified characteristic impedance, depending on PCB material and thickness.



Terminal Configuration

No.	Function
1	Unbalanced Port
2	NC or DC Feed
3	Balanced Port
4	Balanced Port
5	GND
6	GND



Johanson Technology, Inc. reserves the right to make design changes without notice.
All sales are subject to Johanson Technology, Inc. terms and conditions.

"High Frequency Ceramic Solutions"

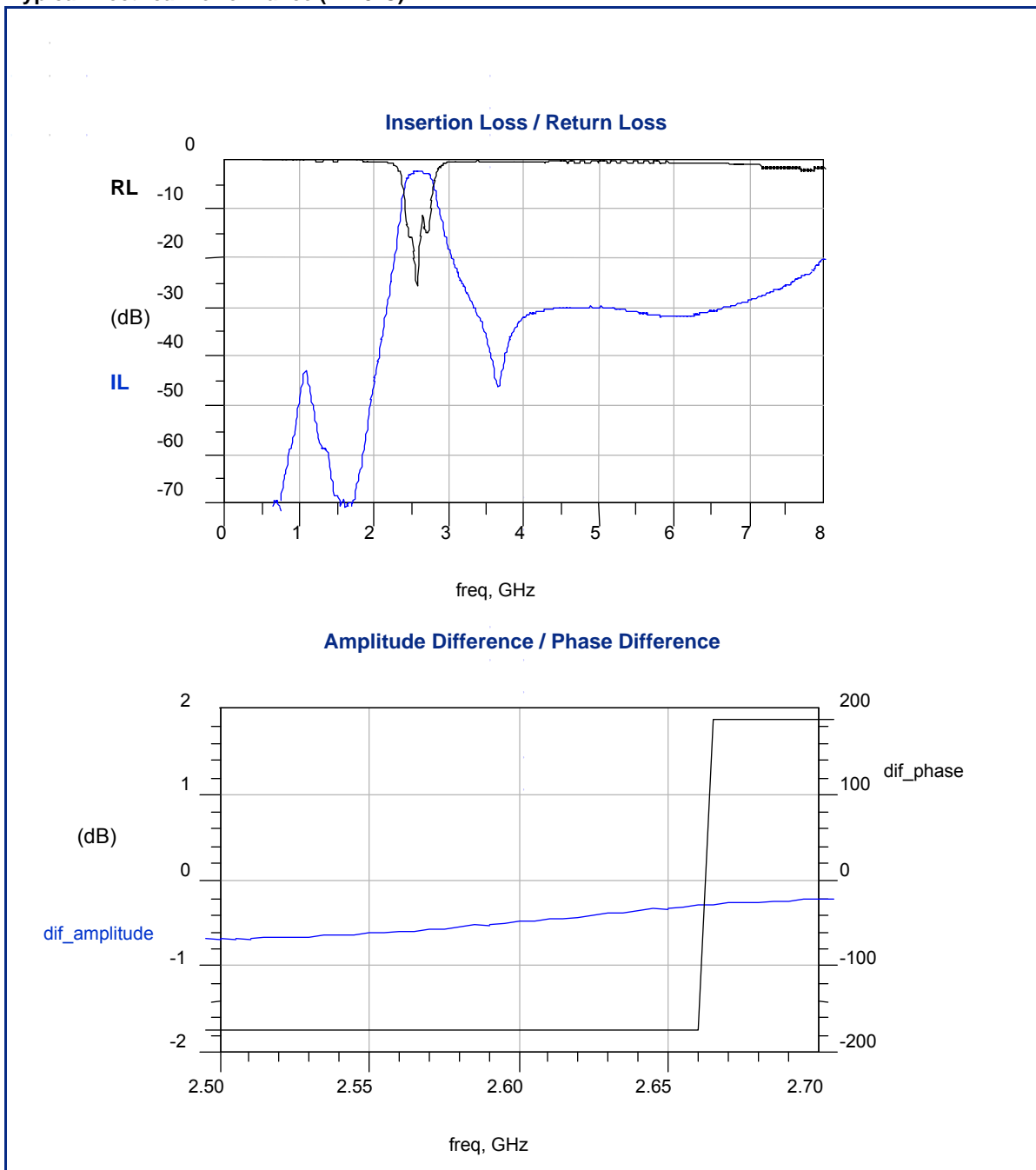
2.6 GHz Balun/Filter Combination

P/N 2595FB39A0050

Detail Specification: 08/14/07

Page 2 of 2

Typical Electrical Performance (T=25°C)



Johanson Technology, Inc. reserves the right to make design changes without notice.
All sales are subject to Johanson Technology, Inc. terms and conditions.



www.johansontechnology.com
4001 Calle Tecate • Camarillo, CA 93012 • TEL 805.389.1166 FAX 805.389.1821

2007 Johanson Technology, Inc. All Rights Reserved