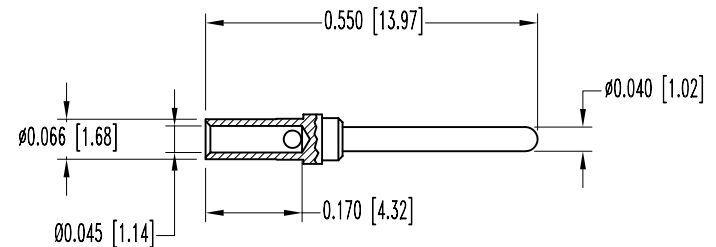
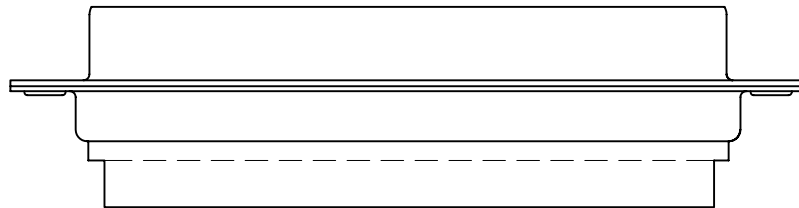
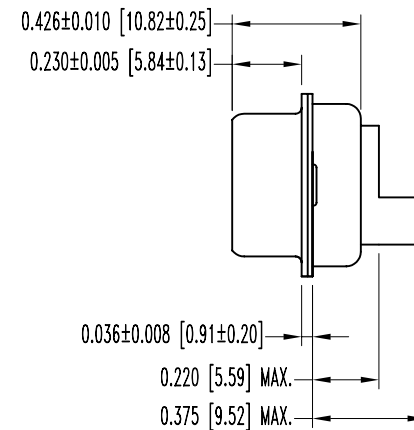
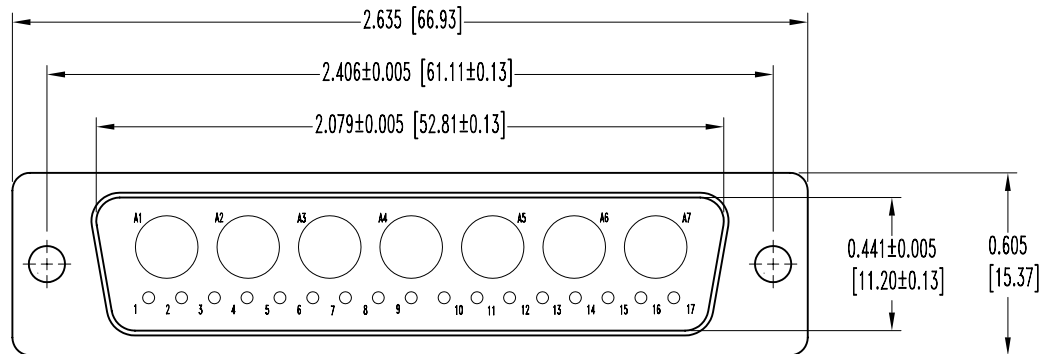


SK6508

POSITRONIC INDUSTRIES BELIEVES THE DATA ON THIS DRAWING TO BE RELIABLE. SINCE THE TECHNICAL INFORMATION IS GIVEN FREE OF CHARGE, THE USER EMPLOYS SUCH INFORMATION AT HIS OWN DISCRETION AND RISK. POSITRONIC INDUSTRIES ASSUMES NO RESPONSIBILITY FOR RESULTS OBTAINED OR DAMAGES INCURRED FROM USE OF SUCH INFORMATION IN WHOLE OR IN PART.

DATE	REV	REVISION RECORD	APP	DR	CK
8-25-05	NC	ECO 24551		YK	

www.DataSheet4U.com



17X MALE CONTACT
(ENLARGED)

NOTES:

- MATERIALS AND FINISHES:**
INSULATOR: GLASS FILLED POLYESTER PER MIL-M-24519 UL94V-0, BLUE COLOR.
CONTACTS: PRECISIONED MACHINED BRASS ALLOY, GOLD FLASH OVER NICKEL PLATE.
SHELLS: STEEL, TIN PLATE.
- ELECTRICAL CHARACTERISTICS:**
CONTACT CURRENT RATING: 7.5 AMPERES NOMINAL.
INITIAL CONTACT RESISTANCE: 0.008 OHMS MAXIMUM.
INSULATOR RESISTANCE: 5 G OHMS.
WORKING VOLTAGE: 300 V r.m.s.
- TEMPERATURE RANGE: -55°C TO +125°C.
- CONNECTORS ARE ROHS COMPLIANT PER ROHS DIRECTIVE 2002/95/EC OF 27 JAN 2003.
- DIMENSIONS ARE IN INCHES [MILLIMETERS].

 POSITRONIC INDUSTRIES INC. www.connectpositronic.com		SCALE		DRAWN BY	
		N.T.S.		YK	
DECIMAL TOL.		CBC SERIES		APPROVED BY	
± 0.015 [0.38]		TITLE			
		CBC24W7M1000X/AA			
ANGULAR TOL.		DATE		REV.	
± 5°		8-25-05		SK6508	
		DRAWING NUMBER		NC	