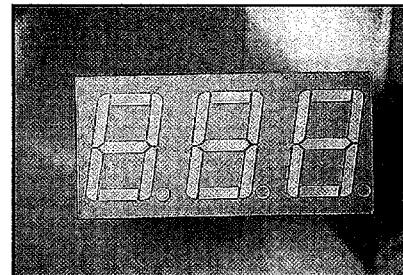
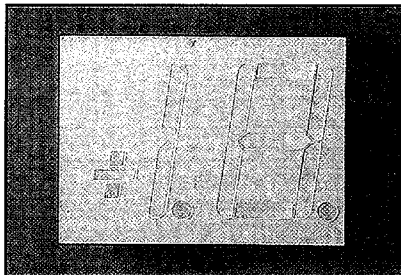


APPLICATIONS

- Instrument Panels
- Test Equipment
- Meter Displays

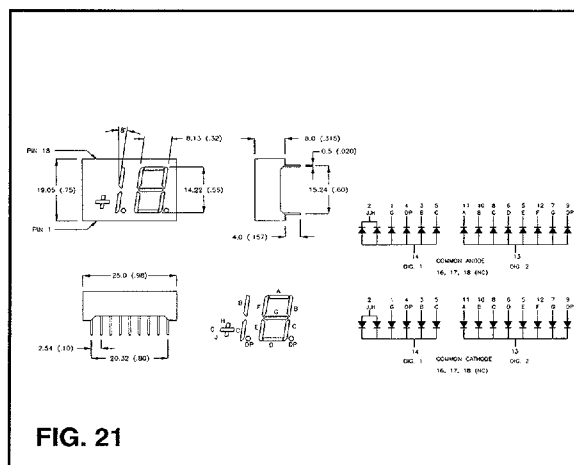
OPTIONS AVAILABLE

- Right Angle Pins (Tooling Applied)
- Bicolor Red/Green
- Face & Segment Colors
- Graded Groups for Color/Intensity (See Page 5)



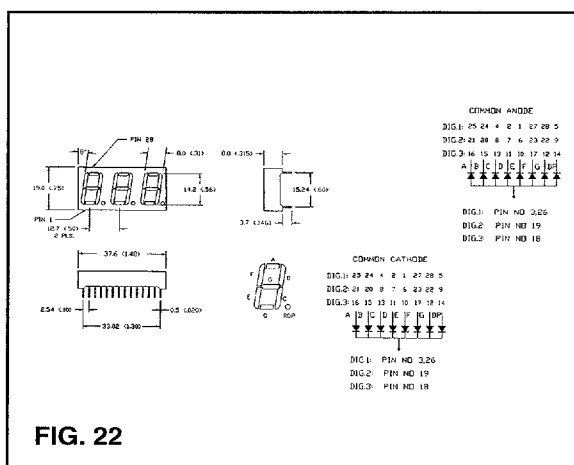
PRODUCT SELECTION

.56" Overflow Numeric Displays, RHD						
Lumex Part Nbr	λ_p (nm)	Iv, μ Cd @10mA(TYP)	Color	Comm Pin	Face Seg	Fig Nbr
LDG-A514RI	625	4000	RED	(+)	Grey White	21
LDG-C514RI	625	4000	RED	(-)	Grey White	21
LDG-A516RI	660	12000	SUP-RED	(+)	Grey White	21
LDG-C516RI	660	12000	SUP-RED	(-)	Grey White	21
LDG-A512RI	565	3500	GREEN	(+)	Grey White	21
LDG-C512RI	565	3500	GREEN	(-)	Grey White	21
LDG-A513RI	585	3500	YELLOW	(+)	Grey White	21
LDG-C513RI	585	3500	YELLOW	(-)	Grey White	21



PRODUCT SELECTION

.56" Triple Numeric Display, RHD Direct Drive						
Lumex Part Nbr	λ_p (nm)	Iv, μ Cd @10mA(TYP)	Color	Comm Pin	Face Seg	Fig Nbr
LDT-A514RI	625	4000	RED	(+)	Grey White	22
LDT-C514RI	625	4000	RED	(-)	Grey White	22
LDT-A516RI	660	12000	SUP-RED	(+)	Grey White	22
LDT-C516RI	660	12000	SUP-RED	(-)	Grey White	22
LDT-A512RI	565	3500	GREEN	(+)	Grey White	22
LDT-C512RI	565	3500	GREEN	(-)	Grey White	22
LDT-A513RI	585	3500	YELLOW	(+)	Grey White	22
LDT-C513RI	585	3500	YELLOW	(-)	Grey White	22



For Design Assistance Fax



1-800-944-2790