

MATERIAL AND FINISHES:

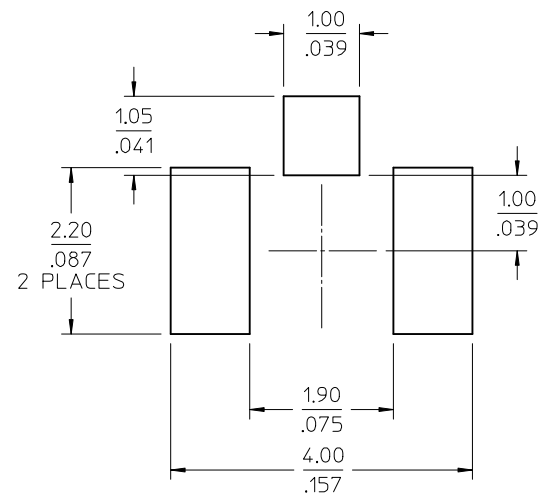
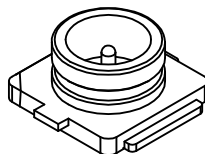
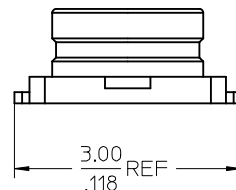
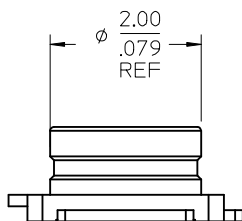
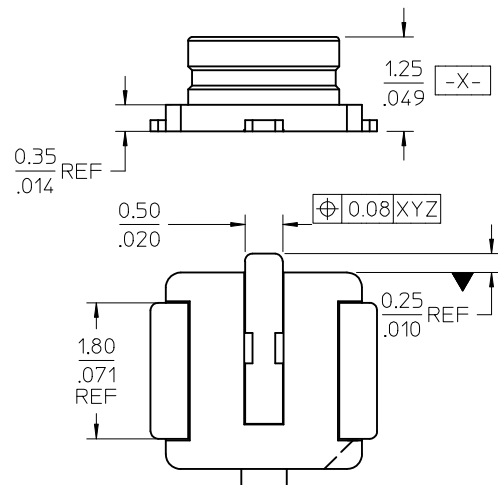
BASE: LCP
COLOR: IVORY

CONTACT: PHOSPHOR BRONZE(JIS 5191-SH)
PLATED GOLD

OUTER CONTACT PHOSPHOR BRONZE(JIS 5191-SH)
PLATED GOLD

NOTE : OPTION TO NEW TOOLING FOR IMPROVING ORIENTATION OF PACKING

WILL WITHSTAND REFLOW TEMPERATURE OF 265 DEG C ±5 DEG

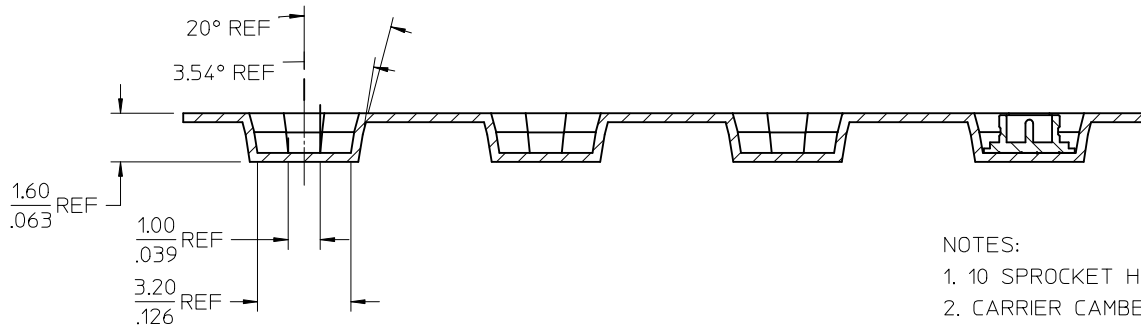
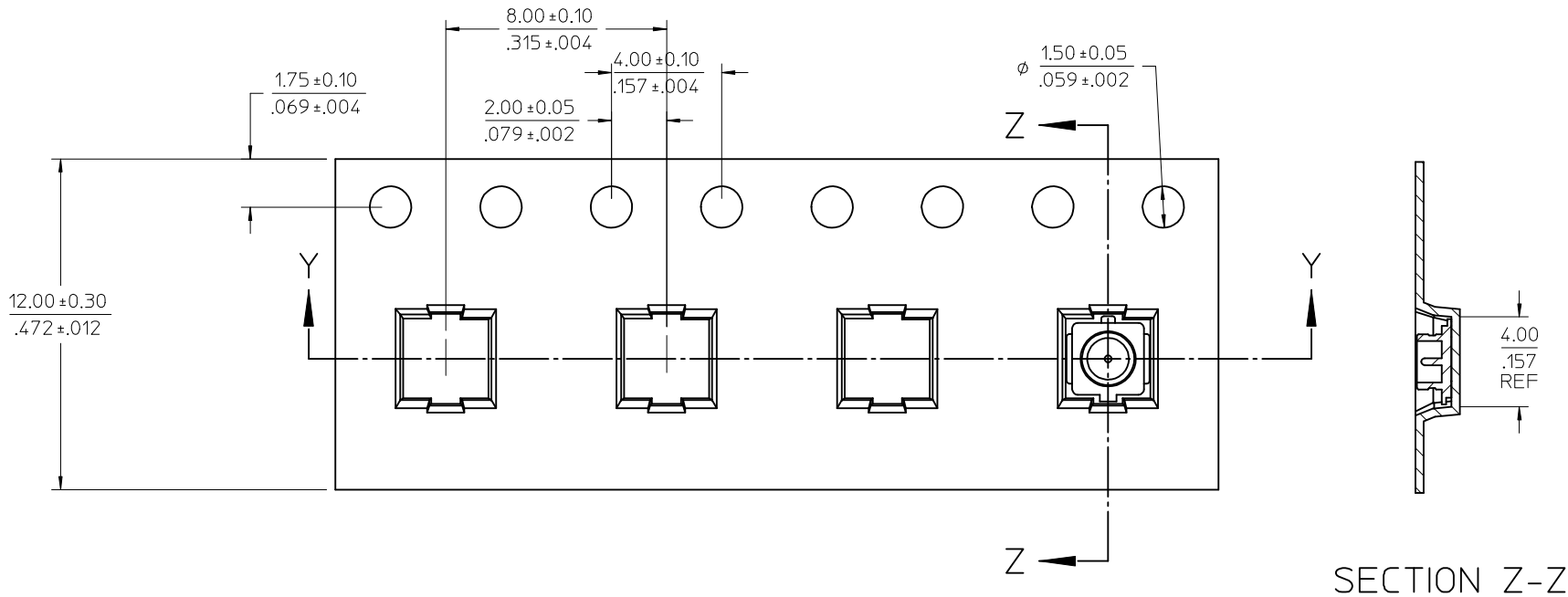


PS-73598-0210	PROD SPEC
SPECIFICATION	DESCRIPTION

73412-0114	TAPE AND REEL (1K/REEL)
73412-0112	73412-0110, 10 PIECES PER BAG IN TAPE
73412-0110	TAPE AND REEL (5K/REEL)
PART NO.	PACKAGING

CHG: ADDED PROD	QUALITY SYMBOLS
SPEC:	▽=0
EC NO: URF2009-0701	▽=0
DRWN: JLEED2	
CHKD: SSS	
APPR: JWIENER	
REV: B3	

GENERAL TOLERANCES (UNLESS SPECIFIED)	DIMENSION STYLE	SCALE	DESIGN UNITS	THIRD ANGLE PROJECTION
	MM/IN		METRIC	
4 PLACES ± --- ± ---	DRAWN BY DATE	TITLE		
3 PLACES ± --- ± ---	DARRY 2003/1/27	MICRO COAXIAL CONNECTOR RECEPTACLE VERTICAL		
2 PLACES ± 0.25 ± ---	CHECKED BY DATE	MOLEX INCORPORATED		
1 PLACE ± 0.13 ± ---	JOHNSON 2003/1/27	SD-73412-011		
ANGULAR ± 2 °	APPROVED BY DATE	SHEET NO.		
	MISEN 2003/1/27	1 OF 2		
DRAFT WHERE APPLICABLE MUST REMAIN WITHIN DIMENSIONS	MATERIAL NO.	DOCUMENT NO.		
	SEE TABLE			
	SIZE C	THIS DRAWING CONTAINS INFORMATION THAT IS PROPRIETARY TO MOLEX INCORPORATED AND SHOULD NOT BE USED WITHOUT WRITTEN PERMISSION		



SECTION Y-Y

SECTION Z-Z

NOTES:

1. 10 SPROCKET HOLE PITCH CUMULATIVE TOLERANCE ± 0.20 mm
2. CARRIER CAMBER IS WITH 1mm IN 1000mm
3. MATERIAL : TRANSPARENT POLYSTYRENE ALLOY
4. ALL DIMENSIONS MEET EIA-481-1 REQUIREMENT
5. THICKNESS: 0.30 ± 0.05 mm
6. PACKING LENGTH PER 22" REEL (122.5 Meters)
7. COMPONENT LOAD PER 13" REEL (5,000 PCS)

CHG: SEE SHEET 1 EC NO: URF2009-0701 DRWN: JLEE02 CHKD: SSS APPR: JWIENER	2009/06/01 2009/06/01 2009/06/01	DESCRIPTION B3	QUALITY SYMBOLS	GENERAL TOLERANCES (UNLESS SPECIFIED) <table border="1"> <tr> <td></td> <td>mm</td> <td>INCH</td> </tr> <tr> <td>4 PLACES</td> <td>\pm ---</td> <td>\pm ---</td> </tr> <tr> <td>3 PLACES</td> <td>\pm ---</td> <td>\pm ---</td> </tr> <tr> <td>2 PLACES</td> <td>± 0.25</td> <td>\pm ---</td> </tr> <tr> <td>1 PLACE</td> <td>± 0.13</td> <td>\pm ---</td> </tr> </table>		mm	INCH	4 PLACES	\pm ---	\pm ---	3 PLACES	\pm ---	\pm ---	2 PLACES	± 0.25	\pm ---	1 PLACE	± 0.13	\pm ---	DIMENSION STYLE MM/IN	SCALE DESIGN UNITS METRIC	THIRD ANGLE PROJECTION
					mm	INCH																
			4 PLACES		\pm ---	\pm ---																
			3 PLACES		\pm ---	\pm ---																
2 PLACES	± 0.25	\pm ---																				
1 PLACE	± 0.13	\pm ---																				
$\nabla=0$ $\nabla=0$	DRAWN BY DARRY	DATE 2003/1/27	TITLE MICRO COAXIAL CONNECTOR RECEPTACLE VERTICAL																			
ANGULAR $\pm 2^\circ$	CHECKED BY JOHNSON	DATE 2003/1/27	APPROVED BY MI SEN																			
DRAFT WHERE APPLICABLE MUST REMAIN WITHIN DIMENSIONS	MATERIAL NO. SEE SHEET 1	DATE 2003/1/27	MOLEX INCORPORATED DOCUMENT NO. SD-73412-011																			

THIS DRAWING CONTAINS INFORMATION THAT IS PROPRIETARY TO MOLEX INCORPORATED AND SHOULD NOT BE USED WITHOUT WRITTEN PERMISSION