

FEATURES AND SPECIFICATIONS

Features and Benefits

- Carries 3 more amperes per circuit than 5566 series headers
- Headers available with mounting pegs for increased board retention
- Positive housing locks
- High current vertical header (standard configuration)

Reference Information

Product Specification: PSX-44476-0001
 Packaging: Tray or bag
 UL File No.: E29179
 CSA File No.: LR19980
 TUV License No.: R75142
 Mates With: 5557 housings
 Designed In: Millimeters

Electrical

Voltage: 600V
 Current: (Used with 16 AWG)

Circuits	2-3	4-6	7-10	12-24
Amperes-Jr.	9	8	7	6
Amperes-HCS	12	11	10	9

Contact Resistance: 10mΩ max.
 Dielectric Withstanding Voltage: 1500V
 Insulation Resistance: 1000 MΩ min.

Mechanical

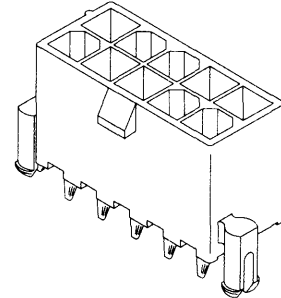
Insertion Force to PCB: 5.0kg max.
 Mating Force: 0.7kg (1.54 lb) max.
 Unmating Force: 0.35kg (0.7 lb) min.
 Normal Force: 200g min.
 Durability: 30 cycles

Physical

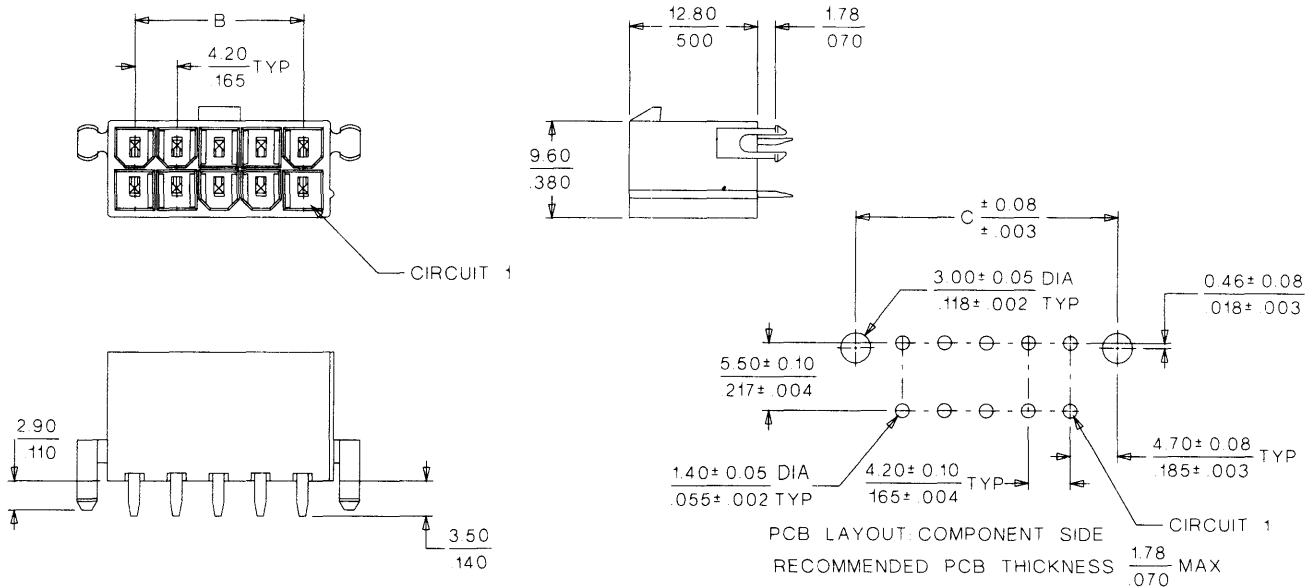
Housing: 6/6 nylon, UL 94V-2 or UL 94V-0
 Contact: High Copper Alloy
 Plating: Tin
 Operating Temperature: -40 to +105°C

molex® 4.20mm (.165") Pitch Mini-Fit, HCS™ Header

44472 Dual Row, Vertical With and Without Pegs



CATALOG DRAWING (FOR REFERENCE ONLY)



ORDERING INFORMATION AND DIMENSIONS

Circuits	Order No.				Dimension		
	Without PCB Pegs		With PCB Pegs		A	B	C
	94V-2	94V-0	94V-2	94V-0			
2	44472-0254	44472-0255	44472-0250	44472-0251	5.40 (.210)		9.40 (.370)
4	44472-0454	44472-0455	44472-0450	44472-0451	9.60 (.380)	4.20 (.170)	13.60 (.535)
6	44472-0654	44472-0655	44472-0650	44472-0651	13.80 (.540)	8.40 (.330)	17.80 (.701)
8	44472-0854	44472-0855	44472-0850	44472-0851	18.00 (.710)	12.60 (.500)	22.00 (.866)
10	44472-1054	44472-1055	44472-1050	44472-1051	22.20 (.870)	16.80 (.660)	26.20 (1.031)
12	44472-1254	44472-1255	44472-1250	44472-1251	26.40 (1.040)	21.00 (.830)	30.40 (1.197)
14	44472-1454	44472-1455	44472-1450	44472-1451	30.60 (1.200)	25.20 (.990)	34.60 (1.362)
16	44472-1654	44472-1655	44472-1650	44472-1651	34.80 (1.370)	29.40 (1.160)	38.80 (1.528)
18	44472-1854	44472-1855	44472-1850	44472-1851	39.00 (1.540)	33.60 (1.320)	43.00 (1.693)
20	44472-2054	44472-2055	44472-2050	44472-2051	43.20 (1.700)	37.80 (1.490)	47.20 (1.858)
22	44472-2254	44472-2255			47.40 (1.870)	42.00 (1.650)	51.40 (2.024)
24	44472-2454	44472-2455	44472-2450	44472-2451	51.60 (2.030)	46.20 (1.820)	55.60 (2.189)

Circuits	Order No.				Dimension		
	Without PCB Pegs		With PCB Pegs		A	B	C
	94V-2	94V-0	94V-2	94V-0			
2	44472-0256	44472-0257	44472-0252	44472-0253	5.40 (.210)		9.40 (.370)
4	44472-0456	44472-0457	44472-0452	44472-0453	9.60 (.380)	4.20 (.170)	13.60 (.535)
6	44472-0656	44472-0657	44472-0652	44472-0653	13.80 (.540)	8.40 (.330)	17.80 (.701)
8	44472-0856	44472-0857	44472-0852	44472-0853	18.00 (.710)	12.60 (.500)	22.00 (.866)
10	44472-1056	44472-1057	44472-1052	44472-1053	22.20 (.870)	16.80 (.660)	26.20 (1.031)
12	44472-1256	44472-1257	44472-1252	44472-1253	26.40 (1.040)	21.00 (.830)	30.40 (1.197)
14	44472-1456	44472-1457	44472-1452	44472-1453	30.60 (1.200)	25.20 (.990)	34.60 (1.362)
16	44472-1656	44472-1657	44472-1652	44472-1653	34.80 (1.370)	29.40 (1.160)	38.80 (1.528)
18			44472-1852	44472-1853	39.00 (1.540)	33.60 (1.320)	43.00 (1.693)
20	44472-2056		44472-2052	44472-2053	43.20 (1.700)	37.80 (1.490)	47.20 (1.858)
22	44472-2256		44472-2252		47.40 (1.870)	42.00 (1.650)	51.40 (2.024)
24			44472-2452	44472-2453	51.60 (2.030)	46.20 (1.820)	55.60 (2.189)

