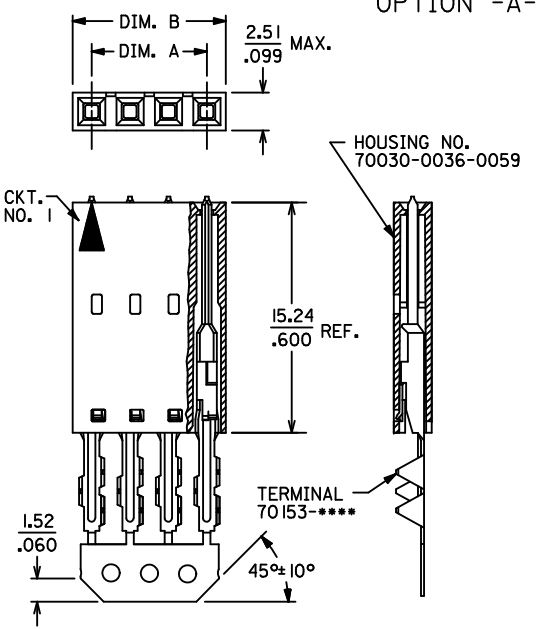
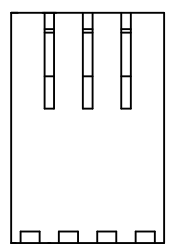
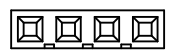
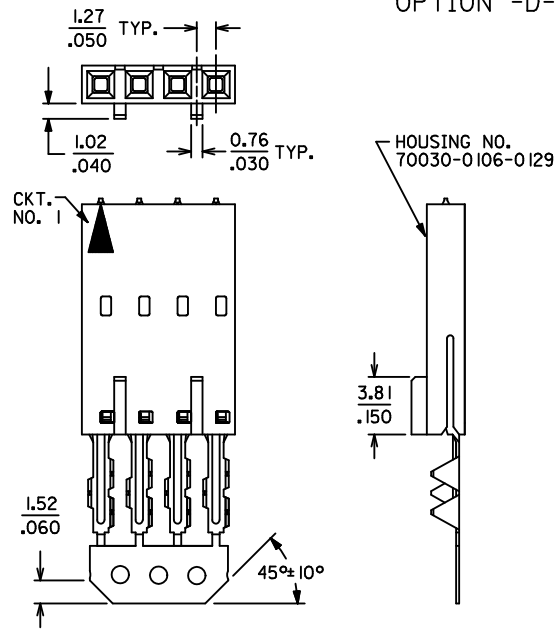


OPTION -A-

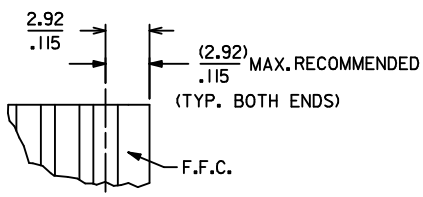
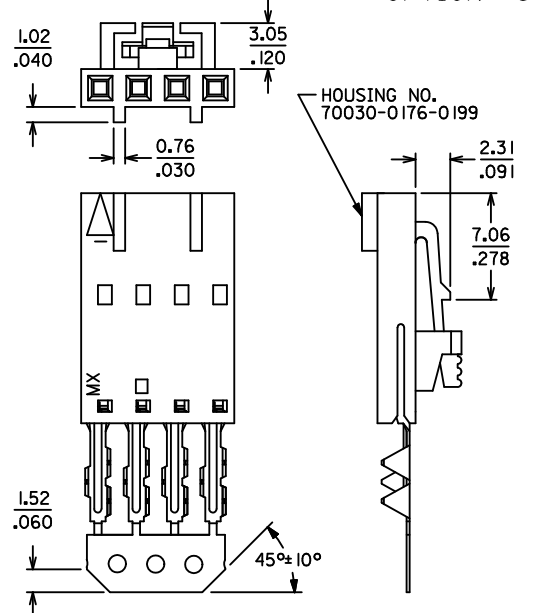


OPTION -D-



OPTIONAL CORE-OUT FOR HOUSING OPTIONS A & D
CKT. SIZES 2-25
(FOR CONTROL OF BOW)

OPTION -G-



- NOTES:
 1. HOUSING: POLYESTER (PBT), UL94 V-0
 COLOR: BLACK
 TERMINAL: PHOSPHOR-BRONZE
 2. FINISHES:
 SEE PAGE 2 FOR PLATING FINISHES
 3. PRODUCT SPECIFICATION: PS-70430
 4. PACKAGING SPECIFICATION: PK-70873-0001
 5. SEE CHART FOR CIRCUIT SIZES
 6. TERMINALS ARE SHOWN PRE-LOADED INTO HOUSING AND LOCKED INTO FIRST ROW OF LOCKING TANG WINDOWS
 7. ALL DIMENSIONS ARE FOR REFERENCE ONLY
 8. SEE SHEET 2 FOR PART NUMBERS AND PLATINGS

CKT. SIZE	DIM. A (MAX.)	DIM. B (MAX.)
2	(2.54) .100	(5.05) .199
3	(5.08) .200	(7.59) .299
4	(7.62) .300	(10.13) .399
5	(10.16) .400	(12.67) .499
6	(12.70) .500	(15.21) .599
7	(15.24) .600	(17.75) .699
8	(17.78) .700	(20.29) .799
9	(20.32) .800	(22.83) .899
10	(22.86) .900	(25.37) .999
11	(25.40) 1.000	(27.91) 1.099
12	(27.94) 1.100	(30.45) 1.199
13	(30.48) 1.200	(32.99) 1.299
14	(33.02) 1.300	(35.53) 1.399
15	(35.56) 1.400	(38.07) 1.499
16	(38.10) 1.500	(40.61) 1.599
17	(40.64) 1.600	(43.15) 1.699
18	(43.18) 1.700	(45.69) 1.799
19	(45.72) 1.800	(48.23) 1.899
20	(48.26) 1.900	(50.77) 1.999
21	(50.80) 2.000	(53.31) 2.099
22	(53.34) 2.100	(55.85) 2.199
23	(55.88) 2.200	(58.39) 2.299
24	(58.42) 2.300	(60.93) 2.399
25	(60.96) 2.400	(63.47) 2.499

MODIFY PRODUCT SPEC EC NO: UCP2010-0987 DRWNGS: BARRA 2009/12/28 CHKD: DMORGAN 2010/01/08 APPR: MILLER 2010/01/11	QUALITY SYMBOLS	GENERAL TOLERANCES (UNLESS SPECIFIED)	DIMENSION STYLE	SCALE	DESIGN UNITS	THIRD ANGLE PROJECTION
	▽=0	mm INCH	MM/IN	4:1	INCH	
	▽=0	4 PLACES ± --- ± ---	DRAWN BY DATE	TITLE		
	▽=0	3 PLACES ± --- ± ---	MGB 12/21/88	ASSY, SL CONNECTOR, FFC		
	▽=0	2 PLACES ± --- ± ---	CHECKED BY DATE	MALE, SINGLE ROW		
	1 PLACE ± --- ± ---	MGB 12/21/88	2.54/.100 GRID			
	ANGULAR ±1/2°	APPROVED BY DATE	MOLEX MOLEX INCORPORATED			
		WAZ 12/21/88	SDA-70431-****			
		MATERIAL NO.	DOCUMENT NO.			
		SEE TABLE	SHEET NO.			
			1 OF 2			
		DRAFT WHERE APPLICABLE MUST REMAIN WITHIN DIMENSIONS	THIS DRAWING CONTAINS INFORMATION THAT IS PROPRIETARY TO MOLEX INCORPORATED AND SHOULD NOT BE USED WITHOUT WRITTEN PERMISSION			

CKT. SIZE	TIN PLATE OPTION -A-		TIN PLATE OPTION -D-		15 GOLD PLATE OPTION -A-		15 GOLD PLATE OPTION -D-		30 GOLD PLATE OPTION -A-		30 GOLD PLATE OPTION -D-		TIN PLATE OPTION -G-	
	EDP. NO.	ENG. NO.	EDP. NO.	ENG. NO.	EDP. NO.	ENG. NO.	EDP. NO.	ENG. NO.	EDP. NO.	ENG. NO.	EDP. NO.	ENG. NO.	EDP. NO.	ENG. NO.
2	15-38-9020	A-70431-0001	15-38-9022	A-70431-0071	15-47-4028	A-70431-0176	15-47-5020	A-70431-0246	15-47-5022	A-70431-0351	15-47-5024	A-70431-0421		
3	-9030	-0002	-9032	-0072	-4038	-0177	-5030	-0247	-5032	-0352	-5034	-0422		
4	-9040	-0003	-9042	-0073	-4048	-0178	-5040	-0248	-5042	-0353	-5044	-0423		
5	-9050	-0004	-9052	-0074	-4058	-0179	-5050	-0249	-5052	-0354	-5054	-0424		
6	-9060	-0005	-9062	-0075	-4068	-0180	-5060	-0250	-5062	-0355	-5064	-0425		
7	-9070	-0006	-9072	-0076	-4078	-0181	-5070	-0251	-5072	-0356	-5074	-0426		
8	-9080	-0007	-9082	-0077	-4088	-0182	-5080	-0252	-5082	-0357	-5084	-0427		
9	-9090	-0008	-9092	-0078	-4098	-0183	-5090	-0253	-5092	-0358	-5094	-0428		
10	-9100	-0009	-9102	-0079	-4108	-0184	-5100	-0254	-5102	-0359	-5104	-0429	15-38-9103	A-70431-0149
11	-9110	-0010	-9112	-0080	-4118	-0185	-5110	-0255	-5112	-0360	-5114	-0430		
12	-9120	-0011	-9122	-0081	-4128	-0186	-5120	-0256	-5122	-0361	-5124	-0431		
13	-9130	-0012	-9132	-0082	-4138	-0187	-5130	-0257	-5132	-0362	-5134	-0432		
14	-9140	-0013	-9142	-0083	-4148	-0188	-5140	-0258	-5142	-0363	-5144	-0433		
15	-9150	-0014	-9152	-0084	-4158	-0189	-5150	-0259	-5152	-0364	-5154	-0434		
16	-9160	-0015	-9162	-0085	-4168	-0190	-5160	-0260	-5162	-0365	-5164	-0435		
17	-9170	-0016	-9172	-0086	-4178	-0191	-5170	-0261	-5172	-0366	-5174	-0436		
18	-9180	-0017	-9182	-0087	-4188	-0192	-5180	-0262	-5182	-0367	-5184	-0437		
19	-9190	-0018	-9192	-0088	-4198	-0193	-5190	-0263	-5192	-0368	-5194	-0438		
20	-9200	-0019	-9202	-0089	-4208	-0194	-5200	-0264	-5202	-0369	-5204	-0439		
21	-9210	-0020	-9212	-0090	-4218	-0195	-5210	-0265	-5212	-0370	-5214	-0440		
22	-9220	-0021	-9222	-0091	-4228	-0196	-5220	-0266	-5222	-0371	-5224	-0441		
23	-9230	-0022	-9232	-0092	-4238	-0197	-5230	-0267	-5232	-0372	-5234	-0442		
24	-9240	-0023	-9242	-0093	-4248	-0198	-5240	-0268	-5242	-0373	-5244	-0443		
25	15-38-9250	A-70431-0024	15-38-9252	A-70431-0094	15-47-4258	A-70431-0199	15-47-5250	A-70431-0269	15-47-5252	A-70431-0374	15-47-5254	A-70431-0444		

PLATING PER ES-88:	CARRIER STRIP COLOR CODE
TIN	NONE
15 GOLD	YELLOW
30 GOLD	RED

PLATING CHART PER ES-88-***

TIN: TIN OVERALL
THICKNESS: 3.81 MICROMETERS (150 MICROINCHES) MINIMUM
ALL OVER A NICKEL UNDERPLATE.

15 GOLD: SELECTIVE GOLD (Au) WITH SELECTIVE TIN
THICKNESS: 0.38 MICROMETERS (15 MICROINCHES) MINIMUM GOLD (Au) IN SELECT AREA
1.90 MICROMETERS (75 MICROINCHES) MINIMUM TIN IN SELECT AREA
ALL OVER A NICKEL UNDERPLATE.

30 GOLD: SELECTIVE GOLD (Au) WITH SELECTIVE TIN
THICKNESS: 0.76 MICROMETERS (30 MICROINCHES) MINIMUM GOLD (Au) IN SELECT AREA
1.90 MICROMETERS (75 MICROINCHES) MINIMUM TIN IN SELECT AREA
ALL OVER A NICKEL UNDERPLATE.

SEE SHEET 1 EC NO: UCP2010-0987 DRAWN BY: DRWINMS BARRA 2009/12/28 CHKD BY: CHKD:DMORGAN 2010/01/08 APPR: MILLER 2010/01/11	QUALITY SYMBOLS ▽=0 ▽=0 ▽=0	GENERAL TOLERANCES (UNLESS SPECIFIED)		DIMENSION STYLE MM/IN		SCALE 1:1	DESIGN UNITS INCH	THIRD ANGLE PROJECTION		
		4 PLACES ± ---	± ---	DRAWN BY MGB	DATE 12/21/88	TITLE ASSY, SL CONNECTOR, FFC MALE, SINGLE ROW 2.54/.100 GRID				
		3 PLACES ± ---	± ---	CHECKED BY MGB	DATE 12/21/88					
		2 PLACES ± ---	± ---	APPROVED BY WAZ		DATE 12/21/88	MATERIAL NO. SEE TABLE			
1 PLACE ± ---		± ---		ANGULAR ±1/2°		DOCUMENT NO. SDA-70431-****		SHEET NO. 2 OF 2		
DRAFT WHERE APPLICABLE MUST REMAIN WITHIN DIMENSIONS				THIS DRAWING CONTAINS INFORMATION THAT IS PROPRIETARY TO MOLEX INCORPORATED AND SHOULD NOT BE USED WITHOUT WRITTEN PERMISSION						