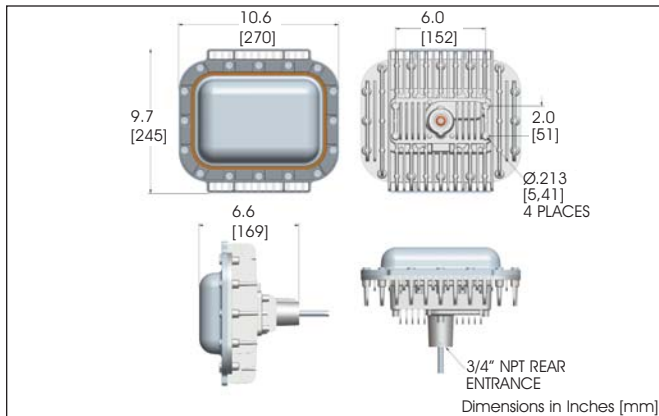




Patent Pending

## SafeSite® Series LED Area Light Class 1, Div. 2 Version



### Certifications

- Class I, Div 2, Groups A,B,C,D
- UL 844
- UL 1598/A
- CSA 22.2 No. 137-M1981
- IP66 (pending)
- NEMA 4X (pending)

### Features & Benefits

- 5 year full performance warranty
- Instant on/off operation
- Universal input (100-277 VAC), 50/60Hz
- Superior color rendition index compared to HPS, LPS, MV
- Mercury free
- Resistant to shock and vibration
- Temperature compensation technology for longer life
- L70 rated for > 100,000 hours @ 25°C
- Factory sealed
- Low T rating compared to traditional fixtures

Temperature Ratings	
Ambient Temperature Range T4a Temperature Code	Ambient Temperature Range T5 Temperature Code
-40°F to +149°F (-40°C to +65°C)	-40°F to +113°F (-40°C to +45°C)

### Ordering Codes:

Part Number	Optical Pattern	Color	Lumens	Watts	Lumens Per Watt	Replaces Up To
<b>100-277VAC</b>						
HZD2C2N	180	Cool White	3,500	43	81	70W HID
HZD3C2N	360	Cool White	3,500	43	81	70W HID
HZD4C2N	180	Cool White	4,500	55	82	175W HID
HZD5C2N	360	Cool White	4,500	55	82	175W HID
HZD8C2N	180	Cool White	5,800	70	83	250W HID
HZD9C2N	360	Cool White	5,800	70	83	250W HID
<b>347-480VAC</b>						
HZD2C9N	180	Cool White	3,500	43	81	70W HID
HZD3C9N	360	Cool White	3,500	43	81	70W HID
HZD4C9N	180	Cool White	4,500	55	82	175W HID
HZD5C9N	360	Cool White	4,500	55	82	175W HID
HZD8C9N	180	Cool White	5,800	70	83	250W HID
HZD9C9N	360	Cool White	5,800	70	83	250W HID

<sup>1</sup>180° optical pattern versions are optimized for a 45° mounting angle

<sup>2</sup>Part numbers listed in the above table are cool white. For neutral white version replace the 5th character with N Ex: HZD2C2N becomes HZD2N2N

### Application:

The SafeSite® Series LED area light represents the future of energy efficient facility illumination for hazardous locations worldwide. The Class I, Div 2 LED area lighting fixture consumes at least 50% energy compared to traditional HID light sources, while reducing maintenance and carbon emissions. This light incorporates both cutting edge LED technology along with proprietary optics to achieve area lighting comparable with other traditional light sources.

Whether your application is in a refinery, oil platform, chemical plant or any other Class I, Div 2 application, this fixture offers improved performance across the board.

### Mechanical Information

Fixture Weight:	10lb (4.5 kg)
Shipping Weight:	12lb (5.44 kg)
Mounting:	(1) Threaded 3/4" NPT rear
Cabling:	10' (3.5m) SOOW Power Cord

### Electrical specifications

Operating Voltage:	See table
Power Consumption:	43W / 55W / 70W
Operating Temp:	-40°F to +149°F (-40°C to +65°C)

### Noise Requirements/ EMC:

FCC Title 47, Subpart B, Section 15, class A device. RF Immunity; 10V/m, 80MHz-1GHz

Surge Protection: 1 kV line to line  
2 kV line to ground

THD: < 15%

Power Factor: > 0.9

### Construction

Housing:	Powder coated aluminum
Finish:	Polyester / epoxy powder coat gray RAL 7040 for superior corrosion resistance
Lens:	Polycarbonate - UL1598A wet location

### Photometric Information

CRI:	> 70
CCT:	5,700K (cool white) 4,300K (neutral white)
Optics:	180° forward throw 360° circular pattern

IES Files: Available upon request

All values typical unless otherwise state

# SafeSite® LED Area Light

## Mounting Options

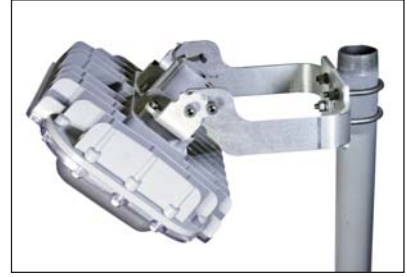
Conduit Mount



Swing Bracket



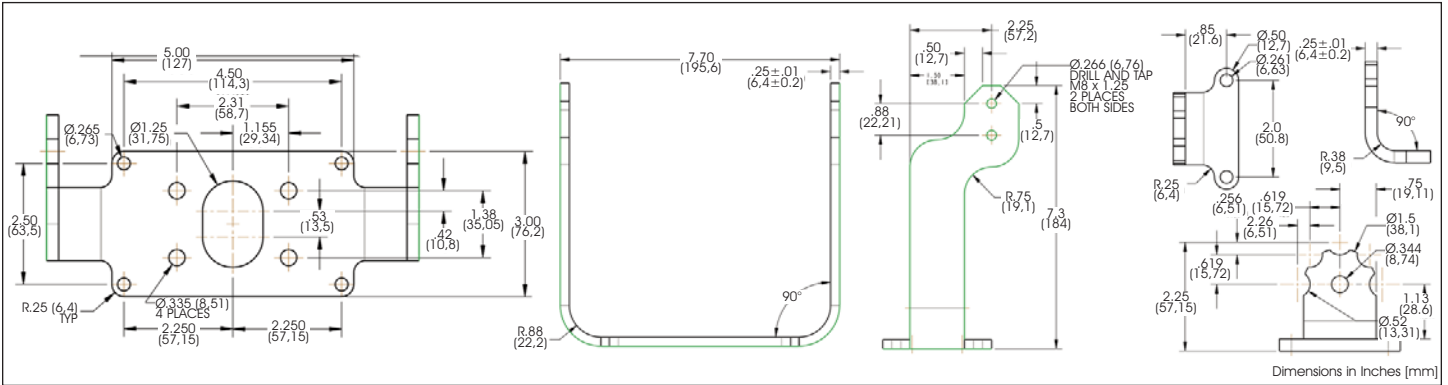
Swing Bracket with Stanchion Mount



## Swing Bracket Dimensions

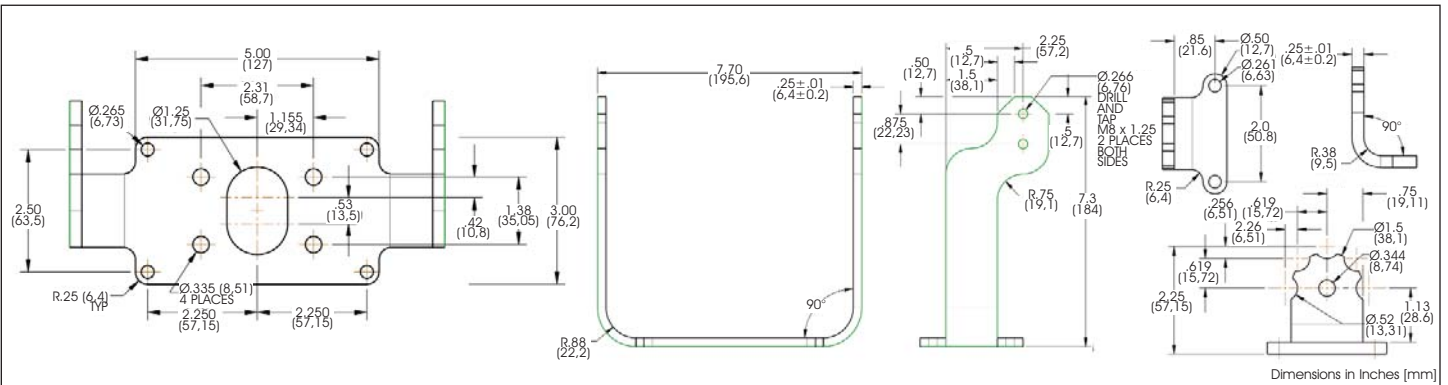
### HZXW2

A standard duty Aluminum bracket, .25" thick 6061-T6 and powder coated.



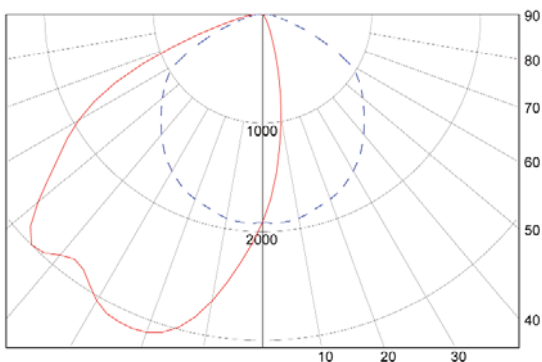
### HZXW4

A standard duty Aluminum bracket, .25" thick 6061-T6 and powder coated. This bracket will mount to 1.5" conduit and comes with pipe mount clamps.

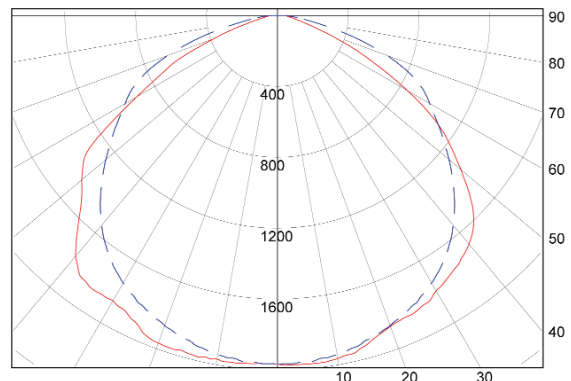


## Candela Plots

180° Optical Pattern Mounted at 45°



360° Optical Pattern



Dialight reserves the right to make changes at any time in order to supply the best product possible. The most current version of this document will always be available at: [www.dialight.com/Assets/Brochures\\_And\\_Catalogs/Illumination/MDTFHZDALX001.pdf](http://www.dialight.com/Assets/Brochures_And_Catalogs/Illumination/MDTFHZDALX001.pdf)

[www.dialight.com](http://www.dialight.com)

MDTFHZDALX001\_F