

PLEASE CHECK WWW.MOLEX.COM FOR LATEST PART INFORMATION

Part Number: [0546977000](#)
Status: **Active**
Description: 0.80mm (.031") Pitch S.O. DIMM Socket, Right Angle, Surface Mount, 4.00mm (.157") Mounted Height, 144 Circuits, 3.3V Power Supply, Lead-free

Documents:

[3D Model](#) [Product Specification PS-54697-003 \(PDF\)](#)
[Drawing \(PDF\)](#) [RoHS Certificate of Compliance \(PDF\)](#)

General

Product Family	Memory Module Sockets
Series	54697
Comments	3.3V Power Supply
Component Type	Memory Module
JEDEC Outline	N/A
Product Name	S.O. DIMM

Physical

Circuits (Loaded)	144
Color - Resin	Natural
Durability (mating cycles max)	30
Entry Angle	90° Angle (Side Entry)
Keying to Mating Part	Yes
Material - Metal	Brass, Phosphor Bronze
Material - Plating Mating	Gold
Material - Plating Termination	Tin
Material - Resin	High Temperature Thermoplastic
PCB Retention	Yes
PCB Thickness Recommended (in)	0.045 In
PCB Thickness Recommended (mm)	1.20 mm
Packaging Type	Tray
Pitch - Mating Interface (in)	0.031 In
Pitch - Mating Interface (mm)	0.80 mm
Plating min: Mating (µin)	10
Plating min: Mating (µm)	0.25
Plating min: Termination (µin)	40
Plating min: Termination (µm)	1
Temperature Range - Operating	-55°C to +85°C
Termination Interface: Style	Surface Mount

Electrical

Current - Maximum per Contact	0.3A
Voltage - Maximum	100V
Voltage Key	3.3V

Material Info

Reference - Drawing Numbers

Product Specification	PS-54697-003, RPS-54697-006
Sales Drawing	SD-54697-004

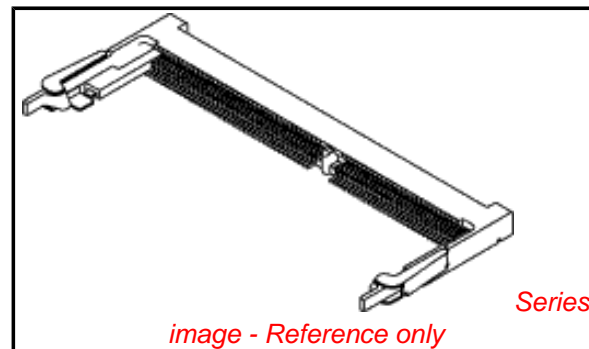


image - Reference only

EU RoHS

**ELV and RoHS
Compliant**
REACH SVHC
 Not Reviewed
**Halogen-Free
Status**
 Not Reviewed

China RoHS



**Need more information on product
environmental compliance?**

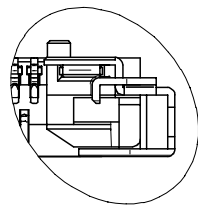
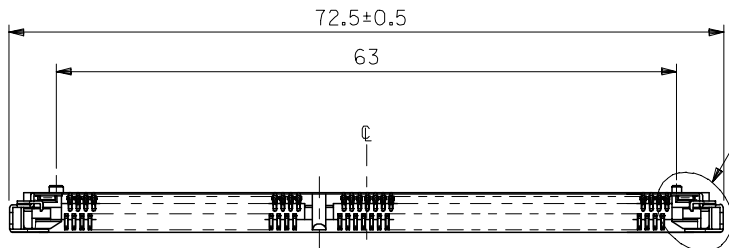
Email productcompliance@molex.com
 For a multiple part number RoHS Certificate of Compliance, [click here](#)

Please visit the [Contact Us](#) section for any non-product compliance questions.

Search Parts in this Series
[54697Series](#)

Mates With
 JEDEC Standard DRAM and SDRAM modules

10 9 8 7 6 5 4 3 2 1



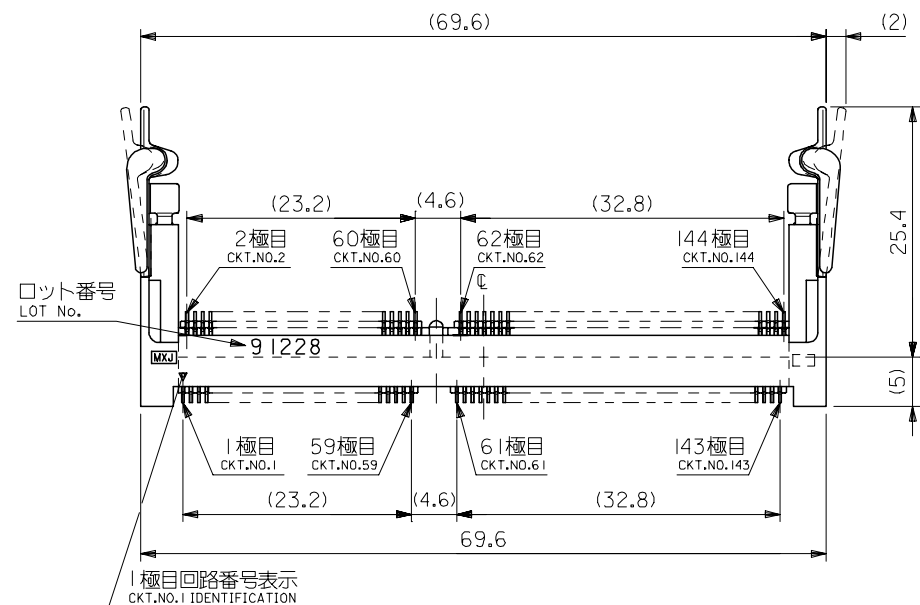
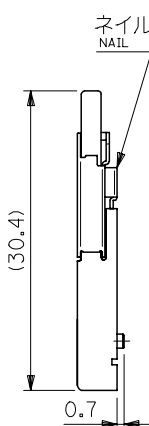
詳細 D
DETAIL D
SCALE 5:1

注記 1. 材料 ハウジング : ガラス入り耐熱樹脂、白色、UL94V-0
MATERIAL HOUSING : G.F.HEAT RESISTANT PLASTIC, WHITE, UL94V-0
ターミナル : 燐青銅
TERMINAL : PHOSPHOR BRONZE
ネイル : 黄銅
NAIL : BRASS

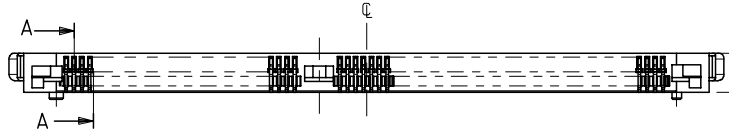
2. めっき仕様
PLATING
ロングターミナル
LONG TERMINAL
接点部 : 金めっき 0.25μmMIN.
CONTACT AREA : GOLD 0.25 MICROMETER MIN.
半田付け部 : 錫めっき 1.0μmMIN.
SOLDER TAIL AREA : TIN 1.0 MICROMETER MIN.
下地めっき : ニッケルめっき 2.0μmMIN.
UNDER-PLATING : NICKEL 2.0 MICROMETER MIN.
ショートターミナル
SHORT TERMINAL
接点部 : 金めっき 0.25μmMIN.
CONTACT AREA : GOLD 0.25 MICROMETER MIN.
半田付け部 : 錫めっき 1.0μmMIN.
SOLDER TAIL AREA : TIN 1.0 MICROMETER MIN.
下地めっき : ニッケルめっき 2.0μmMIN.
UNDER-PLATING : NICKEL 2.0 MICROMETER MIN.
ネイル
NAIL
錫めっき : 1.0μmMIN.
TIN : 1.0 MICROMETER MIN.
下地めっき : ニッケルめっき 1.0μmMIN.
UNDER-PLATING : NICKEL 1.0 MICROMETER MIN.

3. テール平坦度は、0.1 MAX. とする。
TAIL COPLANARITY TO BE 0.1 MAX.
ネイル平坦度は、0.1 MAX. とする。
NAIL COPLANARITY TO BE 0.1 MAX.

4. 本製品は 54697-144* の鉛フリー品である。
THIS PRODUCT IS LEAD FREE OF 54697-144*.



1.75	2.85	1.35	3.25	4.05	***V	ハードトレイ (高さ9) HARD TRAY(HIGHT 9)	54697-7008		
						ハードトレイ (高さ11) HARD TRAY(HIGHT 11)	54697-7005		
						標準トレイ NORMAL TRAY	54697-7002		
3.25	1.35	2.85	1.75	5.55	5.0V	ハードトレイ (高さ9) HARD TRAY(HIGHT 9)	54697-7007	54697-700*	144
						ハードトレイ (高さ11) HARD TRAY(HIGHT 11)	54697-7004		
						標準トレイ NORMAL TRAY	54697-7001		
						ハードトレイ (高さ9) HARD TRAY(HIGHT 9)	54697-7006		
2.5	2.1	2.1	2.5	4.8	3.3V	ハードトレイ (高さ11) HARD TRAY(HIGHT 11)	54697-7003		
						標準トレイ NORMAL TRAY	54697-7000		
E	D	C	B	A	POWER SUPPLY	梱包トレイ PACKAGING TRAY	MATERIAL NO.	MODEL NO.	CKT.



MATERIAL 材料
注記参照
SEE NOTES
FINISH 仕上げ
注記参照
SEE NOTES

REVISED EC NO: J2007-0519 DRW:KSAIT001 CHK:D:THARUYAMA APPR:NUKITA	2006/08/25	2006/08/25	2006/09/04	DESCRIPTION A	GENERAL TOLERANCES (UNLESS SPECIFIED)		DIMENSION STYLE MM ONLY		SCALE 2:1	DESIGN UNITS METRIC	THIRD ANGLE PROJECTION		
	10 UNDER		±0.2		DRAWN BY Y.WADA	DATE 2004/05/14	TITLE 0.8MM PITCH S.O.DIMM SOCKET 144CKT H=4 -LEAD FREE-						
	10 OVER 30 UNDER		±0.25		CHECKED BY M.SASAO	DATE 2004/05/14	APPROVED BY M.SASAO 2004/05/14						
	30 OVER		±0.3		APPROVED BY M.SASAO 2004/05/14		MATERIAL NO. SEE CHART		DOCUMENT NO. SD-54697-004	SHEET NO. 1 OF 3			
ANGULAR ±3 °					DRAFT WHERE APPLICABLE MUST REMAIN WITHIN DIMENSIONS		SIZE A3		THIS DRAWING CONTAINS INFORMATION THAT IS PROPRIETARY TO MOLEX INCORPORATED AND SHOULD NOT BE USED WITHOUT WRITTEN PERMISSION				

10 9 8 7 6 5 4 3 2 1

F F

E E

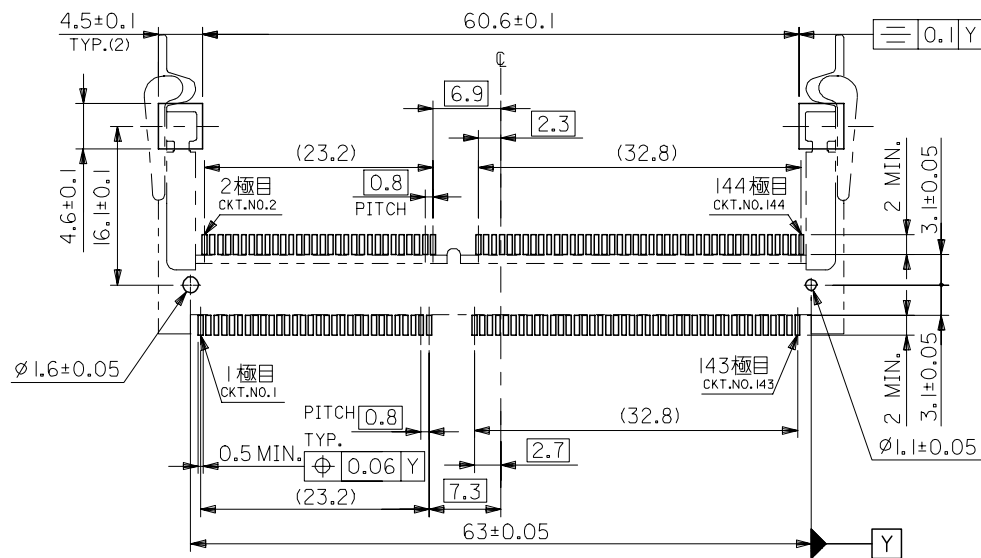
D D

C C

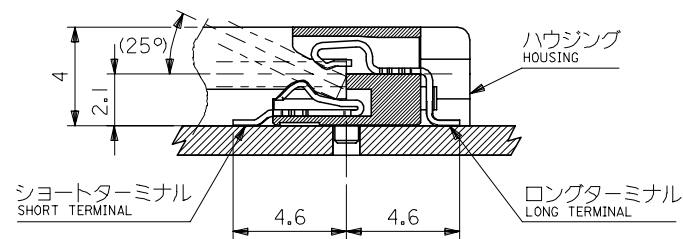
B B

A A

10 9 8 7 6 5 4 3 2 1



推奨基板寸法
RECOMMENDED PCB PATTERN LAYOUT
(THK:1.2±0.1)

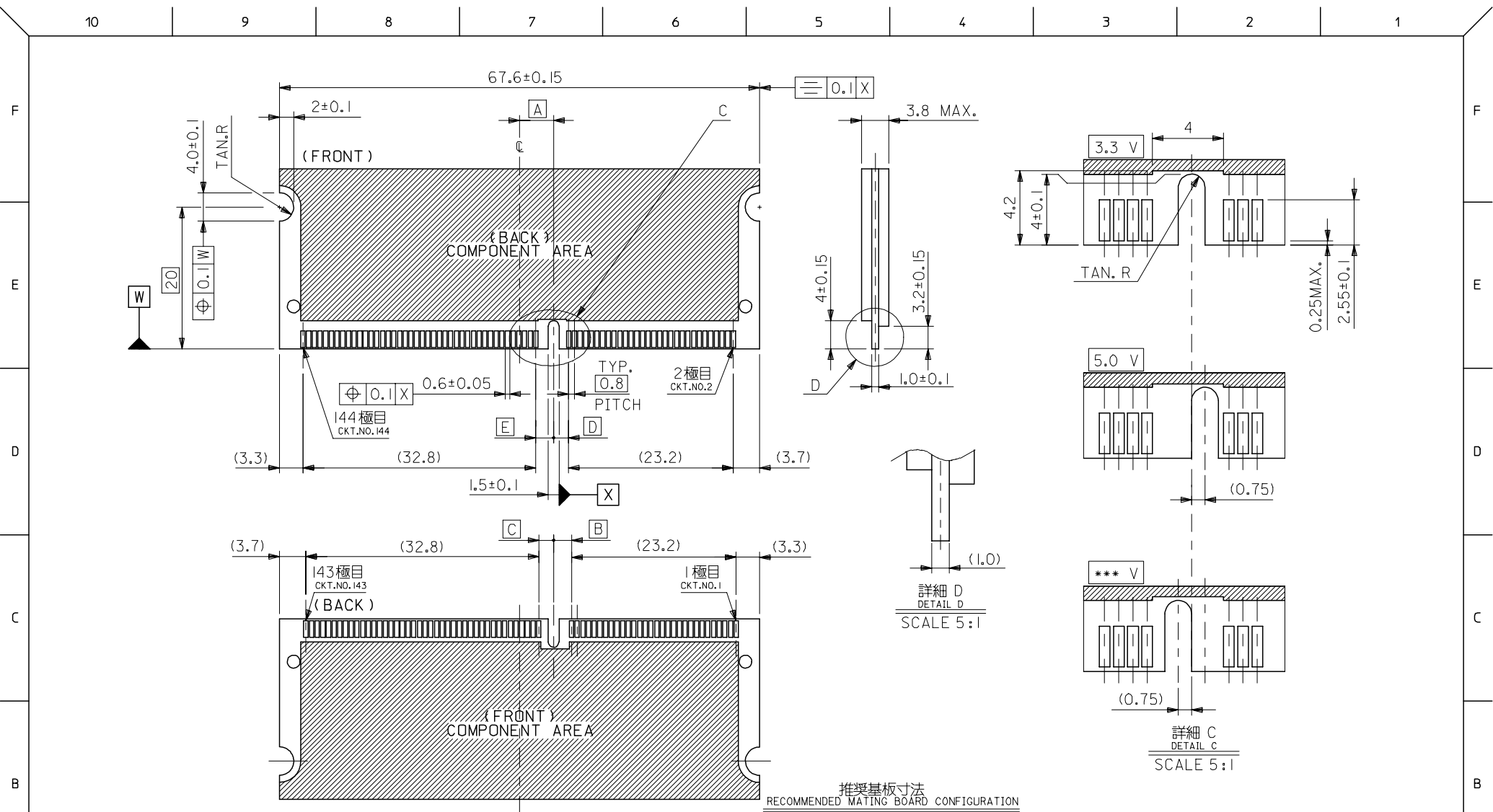


断面 A-A
SECTION A-A
SCALE 5:1

MODEL NO. 54697-700*

REVISED EC NO: J2007-0519 DRWNG: SALT001 2006/08/25 CHKD: THARUYAMA 2006/08/25 APPR: NUKITA 2006/09/04	GENERAL TOLERANCES (UNLESS SPECIFIED)		DIMENSION STYLE MM ONLY	SCALE 2:1	DESIGN UNITS METRIC	THIRD ANGLE PROJECTION
	10 UNDER	± 0.2	DRAWN BY Y. WADA	DATE 2004/05/14	TITLE 0.8MM PITCH S.O.DIMM SOCKET 144CKT H=4 -LEAD FREE-	
	10 OVER 30 UNDER	± 0.25	CHECKED BY M. SASAO	DATE 2004/05/14	MOLEX INCORPORATED	
	30 OVER	± 0.3	APPROVED BY M. SASAO	DATE 2004/05/14		
A	ANGULAR ± 3 °	DRAFT WHERE APPLICABLE MUST REMAIN WITHIN DIMENSIONS		MATERIAL NO. SEE SHEET 1 OF 3	DOCUMENT NO. SD-54697-004	SHEET NO. 2 OF 3

MATERIAL 材料	注記参照 SEE NOTES
FINISH 仕上げ	注記参照 SEE NOTES



推奨基板寸法
RECOMMENDED MATING BOARD CONFIGURATION
(THK: 1.0 ± 0.1)

MATERIAL 材料	注記参照 SEE NOTES
FINISH 仕上げ	注記参照 SEE NOTES

REVISED EC NO: J2007-0519 DRW:KSAIT001 CHK:D:THAYAMA APPR:NUKITA	DESCRIPTION	GENERAL TOLERANCES (UNLESS SPECIFIED)	DIMENSION STYLE MM ONLY	SCALE 2:1	DESIGN UNITS METRIC	MODEL NO. 54697-700*
	10 UNDER	± 0.2	DRAWN BY Y. WADA	DATE 2004/05/14	TITLE 0.8MM PITCH S.O.DIMM SOCKET 144CKT H=4 -LEAD FREE-	THIRD ANGLE PROJECTION
	10 OVER 30 UNDER	± 0.25	CHECKED BY M. SASAO	DATE 2004/05/14	MOLEX INCORPORATED	
	30 OVER	± 0.3	APPROVED BY M. SASAO	DATE 2004/05/14		DOCUMENT NO. SD-54697-004
	ANGULAR	± 3 °	DRAFT WHERE APPLICABLE MUST REMAIN WITHIN DIMENSIONS	MATERIAL NO. SEE SHEET 1 OF 3	SHEET NO. 3 OF 3	
A	REV	THIS DRAWING CONTAINS INFORMATION THAT IS PROPRIETARY TO MOLEX INCORPORATED AND SHOULD NOT BE USED WITHOUT WRITTEN PERMISSION				