

*New Jersey Semi-Conductor Products, Inc.*

20 STERN AVE.  
 SPRINGFIELD, NEW JERSEY 07081  
 U.S.A.

TELEPHONE: (201) 376-2922  
 (212) 227-6005  
 FAX: (201) 376-8960

PARAMETERS

2N5062

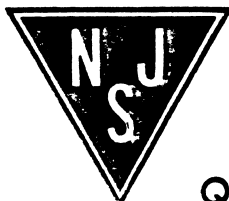
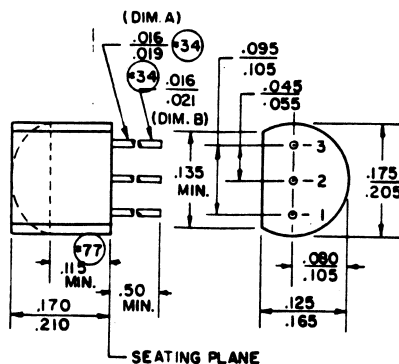
SCR, V(DRM) = 100 V TO 199.9 V

Description: SCR, V(DRM) = 100 V to 199.9 V

Manufacturer.....	
Mil/High-Rel? (Y/N).....	
V(drm) Max.....	100
I <sub>t</sub> (stat) Max. (A).....	510m1
@Temp. (test) (x°C).....	55
Supp Curr. I(TSM).....	10,
Firing Char-Igt Max.....	200u
Firing Char-Vgt Max.....	800m
I <sub>d</sub> (off) Max. (A).....	10u
@Temp. (test) (x°C).....	25
I(h) Max. (A).....	5.0m
V(T) Max.....	1.7
@I <sub>t</sub> (A).....	1.2
Dv/Dt Worst Case.....	30B
t(switch) Off Typ. Time (S)...	3.2u
@I <sub>t</sub> (test) (A).....	1.0
t(switch) Off Typ. Time (S)...	30u
Oper. Temp (x°C) Min.....	-60
Oper. Temp (x°C) Max.....	125u
Pkg Style.....	
Surface Mounted (Y/N).....	N

u Junction Temperature B Typical 1 I<sub>t</sub> (Average) 2 I<sub>t</sub>(rms)  
 , For less than 1 cycle

**T092**



**Quality Semi-Conductors**