

INTRODUCTION:

Adam Tech Right Angle slimline PCB tail D-Sub connectors are a popular interface for many I/O applications. Offered in 9, 15 and 25 positions they are an excellent choice for a low cost industry standard connection and are ideal for low profile design requirements. Adam Tech connectors are manufactured with precision stamped contacts offering a choice of contact plating and a wide selection of mating and mounting options.

FEATURES:

- Short profile space saving design
- Industry standard compatibility
- Durable metal shell design
- Precision formed contacts
- Variety of Mating and mounting options

MATING CONNECTORS:

Adam Tech D-Subminiatures and all industry standard D-Subminiature connectors.

SPECIFICATIONS:

Material:

Standard insulator: PBT, 30% glass reinforced, rated UL94V-0
Optional Hi-Temp insulator: Nylon 6T
Insulator Color: Black
Contacts: Phosphor Bronze
Shell: Steel, Tin or Zinc plated
Hardware: Brass, Nickel plated

Contact Plating:

Gold Flash (15 and 30 μ m Optional) over Nickel underplate overall.

Electrical:

Operating voltage: 250V AC / DC max.
Current rating: 5 Amps max.
Contact resistance: 20 m Ω max. initial
Insulation resistance: 5000 M Ω min.
Dielectric withstanding voltage: 1000V AC for 1 minute

Mechanical:

Insertion force: 0.75 lbs max
Extraction force: 0.44 lbs min

Temperature Rating:

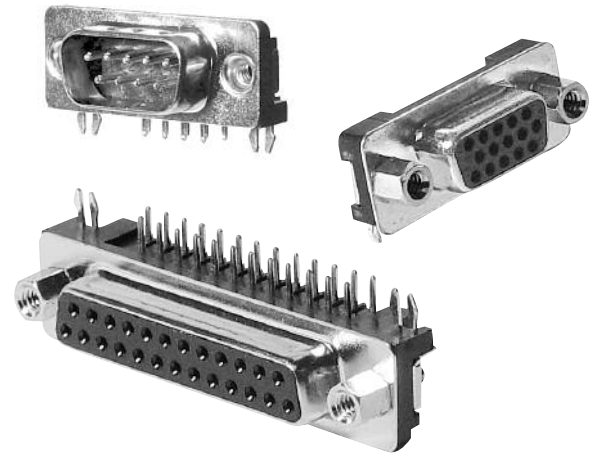
Operating temperature: -65°C to +125°C
Soldering process temperature:
Standard insulator: 235°C
Hi-Temp insulator: 260°C

PACKAGING:

Anti-ESD plastic trays

APPROVALS AND CERTIFICATIONS:

UL Recognized File No. E224053
CSA Certified File No. LR1578596



ORDERING INFORMATION

DB25

SN

24

SHELL SIZE/ POSITIONS

DE09 = 9 Positions
DB25 = 25 Positions
HD15 = High Density
15 Positions

MOUNTING OPTIONS

24 = Forked Boardlocks
for PCB Retention and
#4-40 threaded inserts
in mounting holes
25 = Forked Boardlocks
for PCB retention and
#4-40 threaded inserts
in mounting holes with
installed jackscrews

CONTACT / TYPE

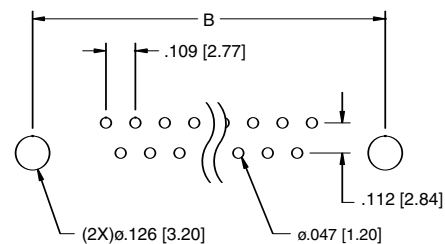
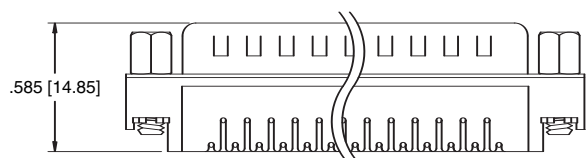
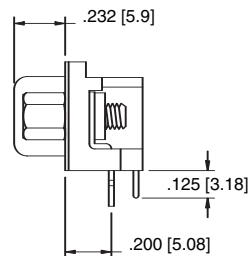
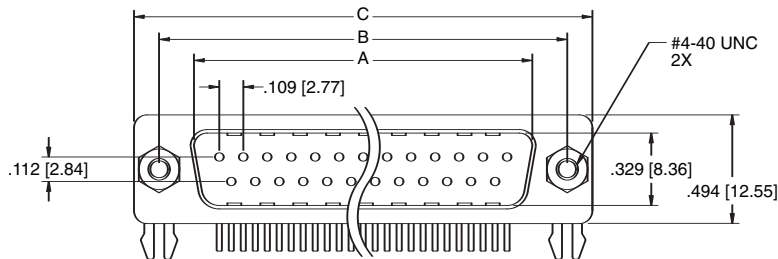
PN = Plug, .197" Slimline
SN = Socket, .197" Slimline

OPTIONS:

Add designator(s) to end of part number

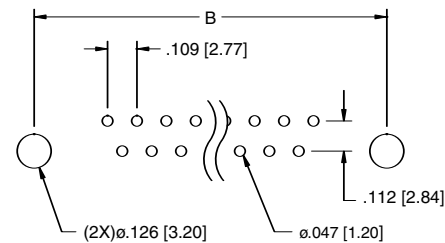
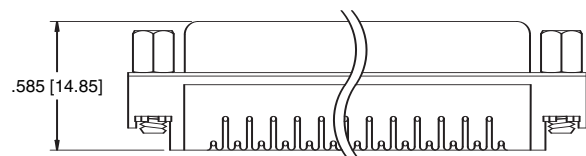
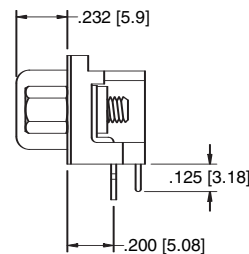
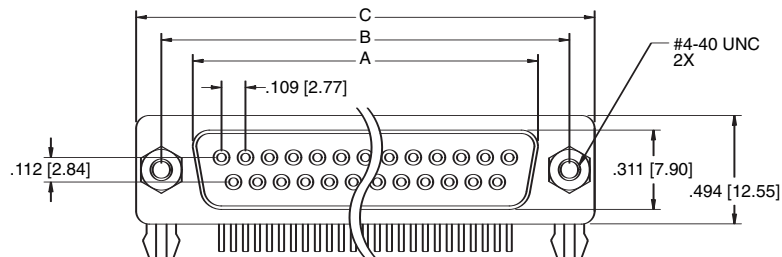
- 15 = 15 μ m gold plating in contact area
- 30 = 30 μ m gold plating in contact area
- LPJ = Loose packed jackscrews
- HT = Hi-Temp insulator for Hi-Temp soldering
processes up to 260°C
- R = Round jackscrews installed

PLUG



Recommended PCB Layout

SOCKET



Recommended PCB Layout

Unit: Inch [mm]

| Positions | PLUG | SOCKET | DIMENSIONS | |
|-----------|---------------|---------------|---------------|---------------|
| | A | A | B | C |
| 9 | .666 [16.92] | .643 [16.33] | .984 [24.99] | 1.213 [30.81] |
| 15 | .994 [25.25] | .971 [24.66] | 1.312 [33.32] | 1.541 [39.14] |
| 25 | 1.534 [38.96] | 1.511 [38.38] | 1.852 [47.04] | 2.088 [53.04] |