

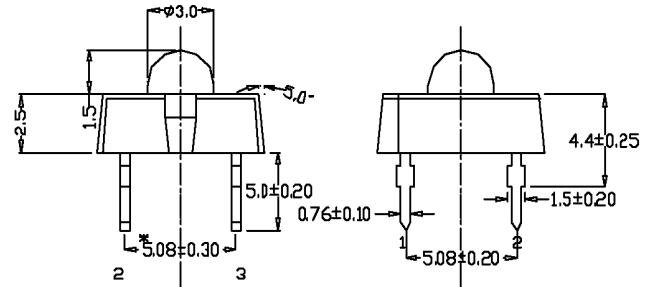
LP377AHR1-90G

Features

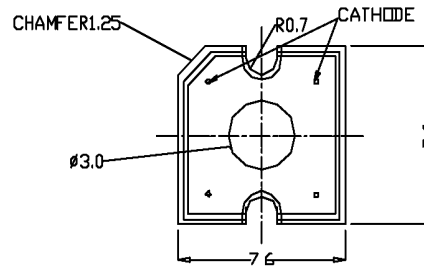
- 4 Pin Plastic Package
- High Current Operation
- High Flux Output
- Low Profile
- Water Clear Lens

Applications

- Illuminator
- Indicators
- Architectural Lighting
- Channel Letters
- Strip Lighting



2.3 ANODE
1.4 CATHODE



NOTES:
1. All Dimensions are in mm. Tolerance is ± 0.25 mm.
2. An Epoxy Meniscus may extend about 1.5mm down the leads.
3. Burr around bottom of epoxy may be 0.5mm Max.

Maximum Ratings ($T_a=25^\circ\text{C}$)

Characteristic	Symbol	Max.	Unit
Forward Current	I_F	70	mA
Reverse Voltage	V_R	5	V
Power Dissipation	P_D	210.00	mW
Operating Temperature	T_{opr}	-40 ~ +100	$^\circ\text{C}$
Storage Temperature	T_{stg}	-40 ~ +100	$^\circ\text{C}$
Soldering Temperature	T_{sol}	260	$^\circ\text{C}$
Soldering Time	-	for 5 sec. max	-

Opto-Electrical Characteristics ($T_a=25^\circ\text{C}$)

Characteristic	Symbol	Test Condition	Min	Typ	Max	Unit
Forward Voltage	V_F	$I_F=70\text{mA}$	-	2.50	3.00	V
Reverse Current	I_R	$V_R=5\text{V}$	-	-	100	μA
Luminous Intensity	I_v	$I_F=70\text{mA}$	3000.00	4500.00	-	mcd
Viewing Angle	$2\theta^{1/2}$	-	-	90°	-	deg.
Peak Wavelength	λ_p	$I_F=70\text{mA}$	-	632	-	nm
Dominant Wavelength	λ_d	$I_F=70\text{mA}$	-	624	-	nm
Spectral Line Half Width	$\Delta\lambda$	$I_F=70\text{mA}$	-	20	-	nm

Company Headquarters
120 Broadway
Menands, New York 12204
Toll Free: 800.984.5337
Fax: 518.432.7454



Web: www.marktechopto.com | Email: info@marktechopto.com

California Sales Office:
950 South Coast Drive, Suite 265
Costa Mesa, California 92626
Toll Free: 800.984.5337
Fax: 714.850.9314

LP377AHR1-90G Graphs

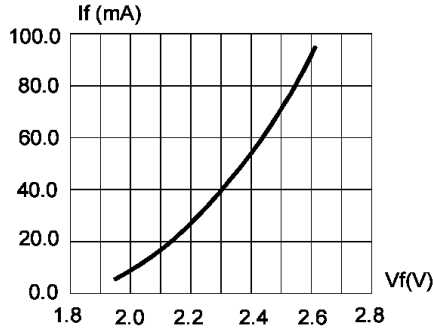


FIG.1 FORWARD CURRENT VS. FORWARD VOLTAGE.

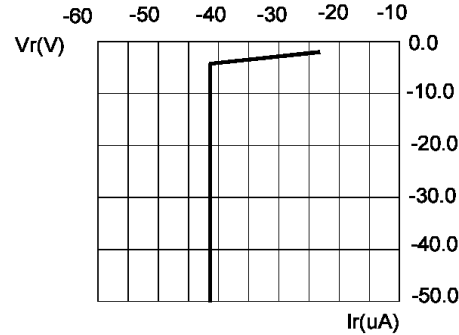


FIG.2 REVERSE CURRENT VS. REVERSE VOLTAGE.

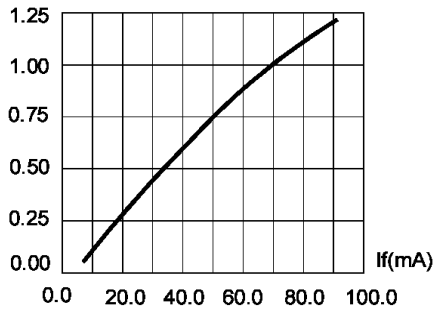


FIG.3 RELATIVE LUMINOUS FLUX VS. FORWARD CURRENT.

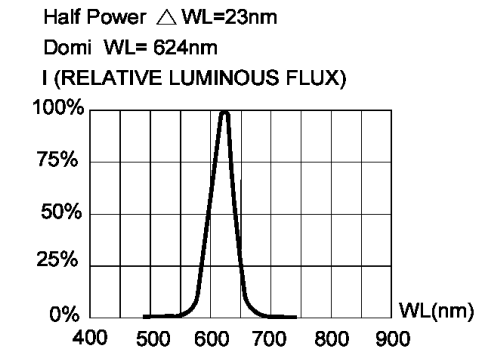


FIG.4 RELATIVE LUMINOUS FLUX VS. WAVELENGTH.

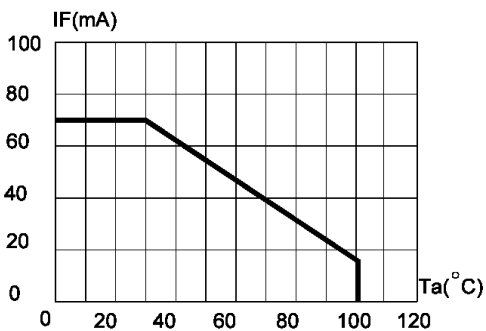


FIG.5 MAXIMUM FORWARD DC CURRENT VS AMBIENT TEMPERATURE (Tjmax=120 $^{\circ}$ C)

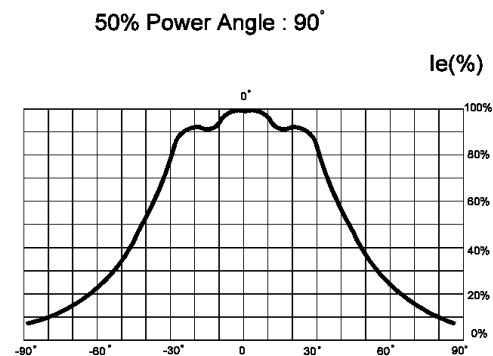


FIG.6 FAR FIELD PATTERN