



LBS21101 SAW Filter Technical Specification

S P
LBS21101

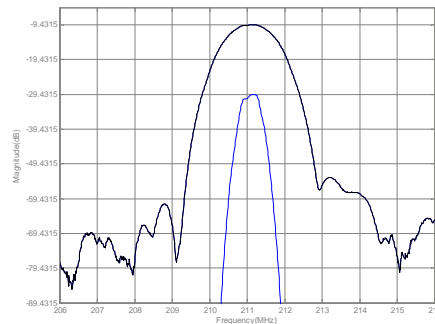
Absolute Maximum Ratings

Rating	Value	Units
Maximum Incident Power in Passband	+10	dBm
Max. DC voltage between any 2 terminals	30	VDC
Storage Temperature Range	-40 to +85	°C
Max Soldering Profile	265°C for 10 s	

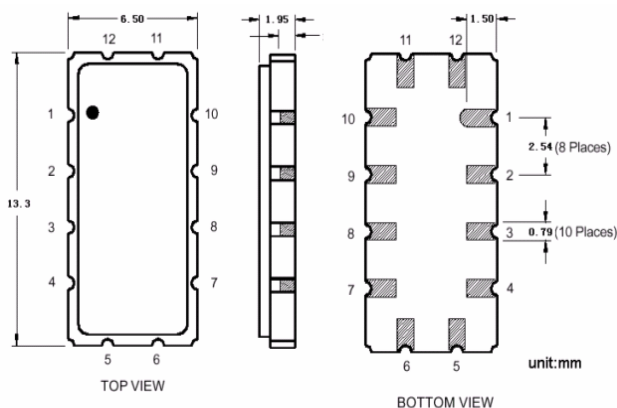
Electrical Characteristics

Characteristic	Sym	Min	Typ	Max	Units	
Nominal Center Frequency	fc	211.000			MHz	
Passband	Insertion Loss at fc	IL		9.1	10.0	dB
	3 dB Passband	BW ₃	±450	±560		kHz
	Group Delay Variation over fc ±150 kHz	GDV		150	250	nSP-P
Rejection	fc-2.0 to fc-1.05 and fc+1.05 to fc+2.0 MHz		10	18	dB	
	fc-80 to fc-2.0 and fc+2.0 to fc+80 MHz		30	40		
	n x fc over 291 to 2000 MHz		40	60		
Operating Temperature Range	T _A	-10		+85	°C	
Impedance Matching to 50 Ω unbalanced	External L-C					
Case Style	SMP-53	13.3 x 6.5 mm Nominal Footprint				

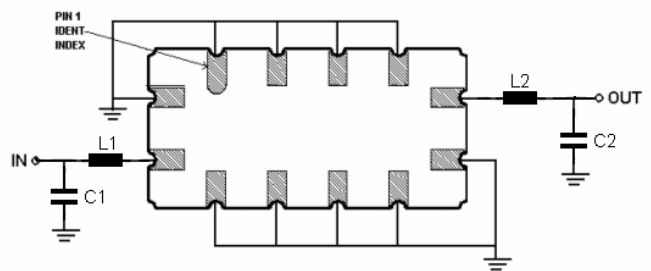
Frequency Response



Package Outline



Matching Configuration



$$L1 = L2 = 68\text{nH}$$

$$C1 = C2 = 36\text{pF}$$

Notes - Component values may change depending on board layout.