

**PLEASE CHECK WWW.MOLEX.COM FOR LATEST PART INFORMATION**

**Part Number:** **0191930320**  
**Status:** **Active**  
**Description:** VersaKrimp™ Ring Tongue Terminal for 2 AWG Wire

**Documents:**

[Drawing \(PDF\)](#) [RoHS Certificate of Compliance \(PDF\)](#)

**Agency Certification**

CSA LR18689  
 UL E32244

**General**

Product Family Ring and Spade Terminals  
 Series 19193  
 Crimp Quality Equipment Yes  
 Mil-Spec N/A  
 Product Name VersaKrimp™  
 Type Ring

**Physical**

Barrel Type Closed - Brazed  
 Insulation None  
 Material - Plating Mating Tin  
 Packaging Type Bag  
 Plating min: Mating (µin) 100  
 Plating min: Mating (µm) 2.5  
 Plating min: Termination (µin) 100  
 Plating min: Termination (µm) 2.5  
 Stud Size 3/4" (M18)  
 Termination Interface: Style Crimp or Compression  
 Wire Size AWG 2

**Material Info**

Old Part Number G-377-34

**Reference - Drawing Numbers**

Sales Drawing SD-19193-030

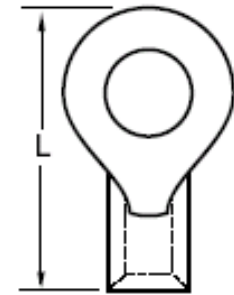


image - Reference only

Series

**EU RoHS**

**ELV and RoHS  
 Compliant**

**REACH SVHC**

**Contains SVHC: No**

**Halogen-Free**

**Status**

**Not Reviewed**

**China RoHS**



**Need more information on product  
 environmental compliance?**

Email [productcompliance@molex.com](mailto:productcompliance@molex.com)  
 For a multiple part number RoHS Certificate of  
 Compliance, [click here](#)

Please visit the [Contact Us](#) section for any  
 non-product compliance questions.

**Search Parts in this Series**

19193Series

**Application Tooling | [FAQ](#)**

*Tooling specifications and manuals are  
 found by selecting the products below.  
 Crimp Height Specifications are then  
 contained in the Application Tooling  
 Specification document.*

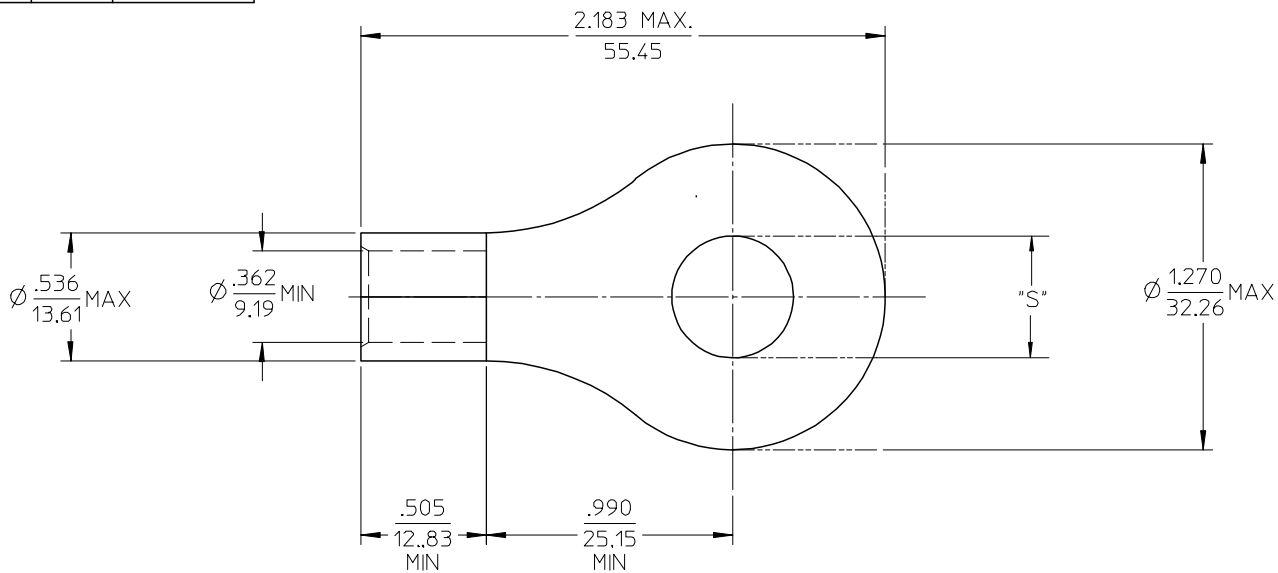
**Global**

Description	Product #
Manual Putt Pump Hydraulic System, Die set required	<u>0192860117</u>
Die Set (large) for the HHLS Hydraulic Crimper	<u>0192900010</u>
Hand Crimp Tool	<u>0640013900</u>
Manual tool for Crimping non-insulated 8AWG thru 4/0 Terminals	<u>0192940008</u>
Putt Pump Dieless Head System	<u>0192860065</u>

This document was generated on 03/24/2010

**PLEASE CHECK [WWW.MOLEX.COM](http://WWW.MOLEX.COM) FOR LATEST PART INFORMATION**

MATERIAL NO. LOOSE PIECE	ENG. NO.	STUD SIZE	±.003 "S"	STOCK THICKNESS
191930319	G-377-14	1/4	.265	.075 (1.90)
191930322	G-377-56	5/16	.328	
191930321	G-377-38	3/8	.390	
191930324	G-377-76	7/16	.453	
191930318	G-377-12	1/2	.515	
191930611	G-377-58	5/8	.656	
191930320	G-377-34	3/4	.781	



# SALES DRAWING

- NOTE(S):
1. MATERIAL: COPPER
  2. PLATING: ELECTROPLATE TIN
  3. ALL DIMENSIONS IN INCHES/(MM).
  4. WIRE SIZE: 2 AWG  
35 MM<sup>2</sup>

UPDATE TO MX STDS EC NO: ETC2003-0315 DRWN:DMYRICK 2003/08/20 CHKD:HEB 2003/08/21 APPR:RDEROSS 2003/08/21	QUALITY SYMBOLS	GENERAL TOLERANCES (UNLESS SPECIFIED)	SCALE 2:1	DESIGN UNITS INCH	THIRD ANGLE PROJECTION	REVISE ON CAD ONLY	
	▼ = 0 ▽ = 0	4 PLACES ± --- ± ---	mm INCH	DIMENSION STYLE IN/MM		TITLE	RING TONGUE TERMINAL VERSAKRIMP 2 AWG
		3 PLACES ± --- ± .005		DRAWN BY DLM	DATE 03/07/11		
		2 PLACES ± 0.13 ± .01		CHECKED BY HEB	DATE 03/07/11	MATERIAL NO. (SEE CHART)	DOCUMENT NO. SD-19193-030
	1 PLACE ± 0.25 ± ---	ANGULAR ± 1/2°	APPROVED BY RWD		DATE 03/07/11	THIS DRAWING CONTAINS INFORMATION THAT IS PROPRIETARY TO MOLEX INCORPORATED AND SHOULD NOT BE USED WITHOUT WRITTEN PERMISSION	
		DRAFT WHERE APPLICABLE					
		MUST REMAIN WITHIN DIMENSIONS					