

PLEASE CHECK WWW.MOLEX.COM FOR LATEST PART INFORMATION

Part Number: [0533956679](#)
Status: **Active**
Description: 1.00mm (.039") Pitch Plug, Surface Mount, Dual Row, Vertical, 8.00mm (.315") Mating Height, Lead-free, 66 Circuits

Documents:

[3D Model](#) [Product Specification PS-52584-003 \(PDF\)](#)
[Drawing \(PDF\)](#) [RoHS Certificate of Compliance \(PDF\)](#)

General

Product Family	PCB Headers
Series	53395
Application	Board-to-Board
Product Name	N/A

Physical

Breakaway	No
Circuits (Loaded)	66
Color - Resin	White
Durability (mating cycles max)	50
First Mate / Last Break	No
Glow-Wire Compliant	No
Guide to Mating Part	No
Keying to Mating Part	None
Lock to Mating Part	None
Mated Height (in)	0.315 In
Mated Height (mm)	8.00 mm
Material - Metal	Phosphor Bronze
Material - Plating Mating	Gold
Material - Plating Termination	Tin
Number of Rows	2
Orientation	Vertical
PCB Locator	Yes
PCB Retention	None
PCB Thickness Recommended (in)	0.040 In
PCB Thickness Recommended (mm)	1.00 mm
Packaging Type	Tube
Pitch - Mating Interface (in)	0.039 In
Pitch - Mating Interface (mm)	1.00 mm
Polarized to PCB	No
Shrouded	Fully
Stackable	No
Temperature Range - Operating	-55°C to +85°C
Termination Interface: Style	Surface Mount

Electrical

Current - Maximum per Contact	0.5A
Voltage - Maximum	100V

Material Info

Reference - Drawing Numbers

Product Specification	PS-52584-003, RPS-52584-010
Sales Drawing	SD-53395-002, SD-53395-003

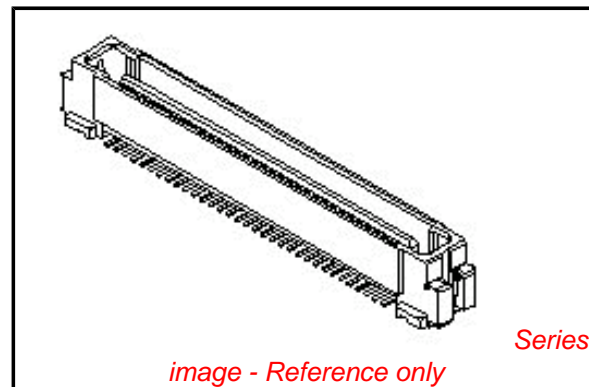


image - Reference only

EU RoHS

**ELV and RoHS
Compliant**
REACH SVHC
 Not Reviewed
**Halogen-Free
Status**

China RoHS



Not Reviewed

**Need more information on product
environmental compliance?**

Email productcompliance@molex.com
 For a multiple part number RoHS Certificate of
 Compliance, [click here](#)

Please visit the [Contact Us](#) section for any
 non-product compliance questions.

Search Parts in this Series

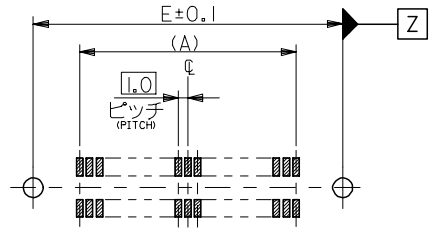
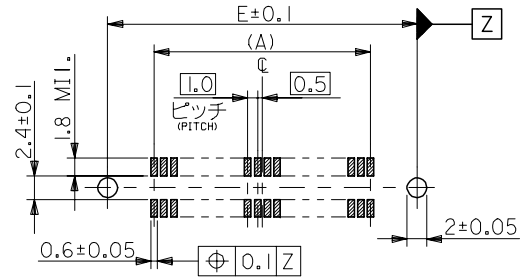
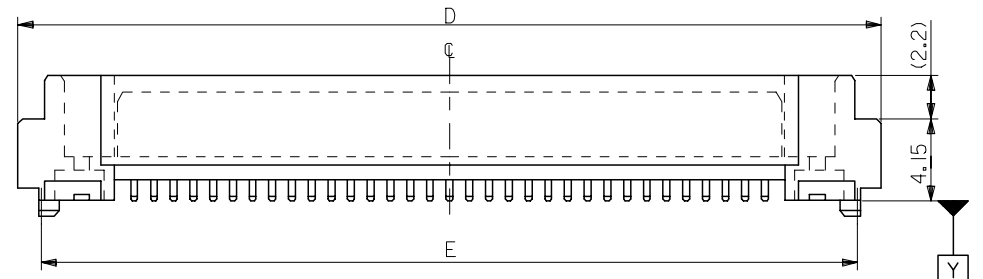
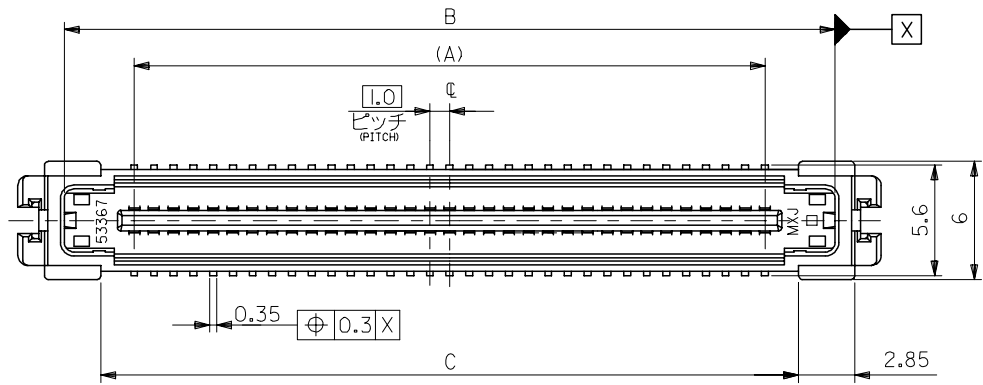
[53395Series](#)

Mates With

[52584 PCB Receptacle](#)

This document was generated on 04/19/2010

PLEASE CHECK WWW.MOLEX.COM FOR LATEST PART INFORMATION

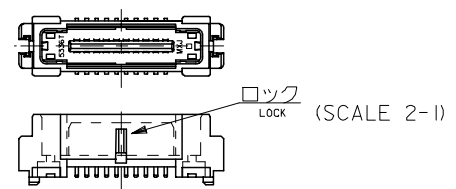


推奨基板寸法 (20, 100, 140 極)
RECOMMENDED PCB PATTERN LAYOUT (20, 100, 140 CKTS.)
(SCALE 2:1)

推奨基板寸法 (34, 66 極)
RECOMMENDED PCB PATTERN LAYOUT (34, 66 CKTS.)
(SCALE 2:1)

注) NOTES

- 材質 MATERIAL
ハウジング: ガラス入り LCP, 白色, UL94V-0
HOUSING: G.F.LCP, WHITE, UL94V-0
ターミナル: 燐青銅 (t=0.2)
TERMINAL: PHOSPHOR BRONZE
- メッキ仕様 PLATING
接点部: 金メッキ 0.25 μmMIN.
CONTACT AREA: GOLD 0.25 μmMIN.
半田付け部: 錫メッキ 1.0 μmMIN.
SOLDER TAIL AREA: TIN 1.0 μmMIN.
下地メッキ: ニッケルメッキ 2.0 μmMIN.
UNDER-PLATING: NICKEL 2.0 μmMIN.
- 推奨基板厚 RECOMMENDED PCB THICKNESS
1.0 ± 0.1mm MIN.
- テールのバツキ寸法 TAIL COPLANARITY
テールは、Y面を基準とし、上へ 0.02MAX.
下へ 0.13MAX. とする。
TAIL COPLANARITY TO BE 0.02MAX. UPWARD AND 0.13MAX. DOWNWARD FROM Y-DATUM PLANE.
- ロックは、20, 34 極に設置する。
LOCK TO BE ADDED TO 20 AND 34 CKTS.
- 梱包 PACKAGING
本製品はスティック梱包とし梱包後の MATERIAL NO. は 53395-**-79 とする。
THIS PRODUCT IS TO BE PACKED IN TUBE. MATERIAL NO.: 53395-**-79
- 同一基板内に複数個 (2ヶ以上) の使用は避けてください。
MXJ DOES NOT RECOMMEND THE USAGE OF TWO OR MORE OF THESE CONNECTORS BETWEEN A SINGLE PAIR OF P.C.BOARD.
- 本製品は 53395**-0 の鉛フリー品である。
THIS PRODUCT IS LEAD FREE OF 53395-**-0.



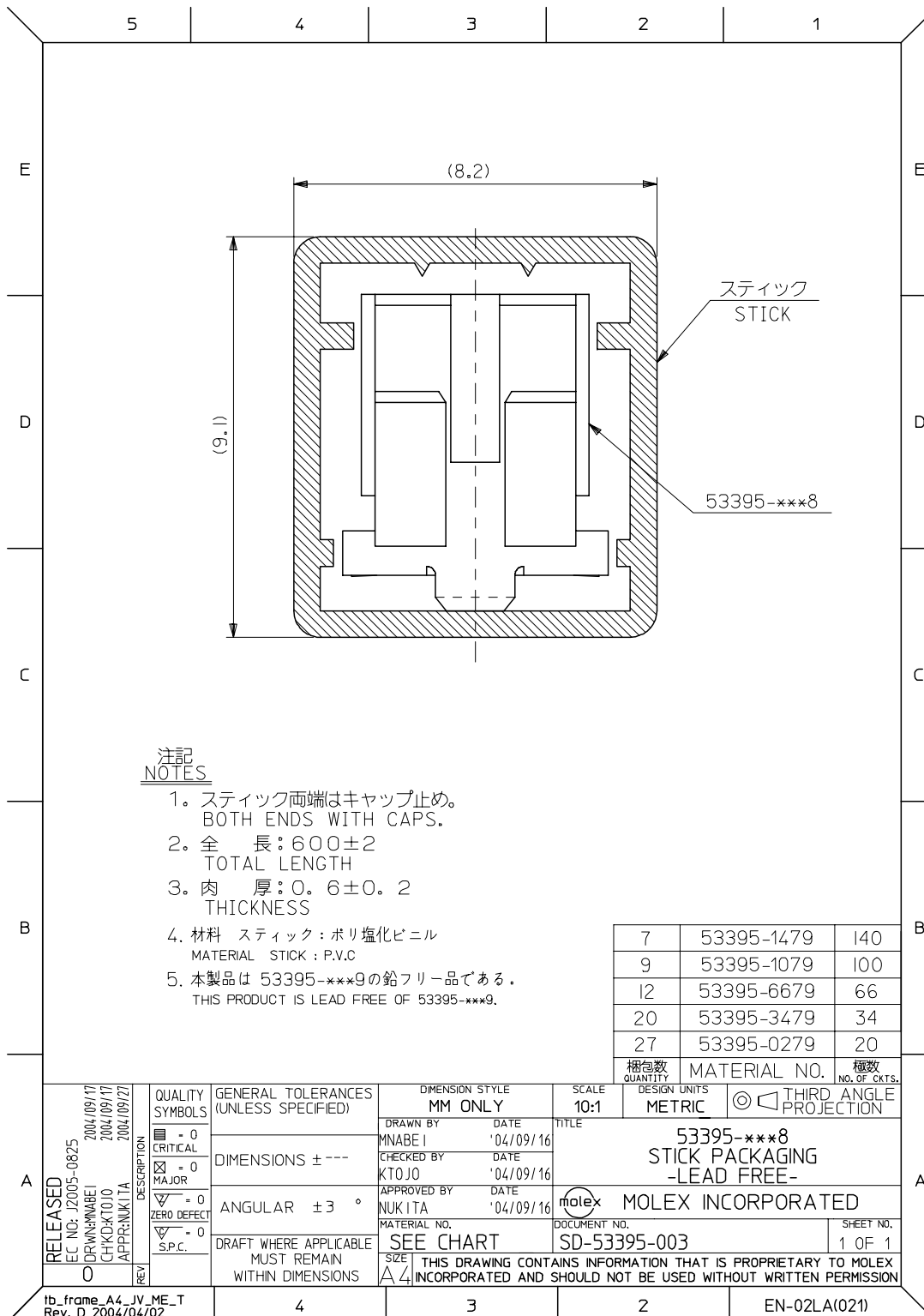
78.4	80.8	72.4	76.02	69	53395-1408	140
58.4	60.8	52.4	56.02	49	53395-1008	100
41.4	43.8	35.4	39.02	32	53395-0668	66
25.4	27.8	19.4	23.02	16	53395-0348	34
18.4	20.8	12.4	16.02	9	53395-0208	20
E	D	C	B	(A)	MATERIAL NO.	極数 NO. OF CKTS.

材料 MATERIAL	注参照 SEE NOTES
仕上げ FINISH	注参照 SEE NOTES
適用電線範囲 WIRE RANGE	-#-
被覆外径 INS. RANGE	-#-

REV	DESCRIPTION
0	RELEASED EC NO: J2005-0825 DRAWN: MNABE CHKD: KTOJO APP: NUKITA

GENERAL TOLERANCES (UNLESS SPECIFIED)	
10 UNDER	±0.2
10 OVER 30 UNDER	±0.25
30 OVER	±0.3
ANGULAR	±3 °
DRAFT WHERE APPLICABLE MUST REMAIN WITHIN DIMENSIONS	

DIMENSION STYLE MM ONLY		SCALE 4:1	DESIGN UNITS METRIC	THIRD ANGLE PROJECTION
DRAWN BY MNABE	DATE '04/09/16	TITLE 1.0 B-T0-B S/T PLUG HSG ASSY -LEAD FREE-		
CHECKED BY KTOJO	DATE '04/09/16	MOLEX MOLEX INCORPORATED		
APPROVED BY NUKITA	DATE '04/09/16	MATERIAL NO. SEE CHART	DOCUMENT NO. SD-53395-002	SHEET NO. 1 OF 1
SIZE A3 THIS DRAWING CONTAINS INFORMATION THAT IS PROPRIETARY TO MOLEX INCORPORATED AND SHOULD NOT BE USED WITHOUT WRITTEN PERMISSION				



注記
NOTES

1. スティック両端はキャップ止め。
BOTH ENDS WITH CAPS.
2. 全 長: 600±2
TOTAL LENGTH
3. 肉 厚: 0.6±0.2
THICKNESS
4. 材料 スティック: ポリ塩化ビニル
MATERIAL STICK: P.V.C
5. 本製品は 53395-***9の鉛フリー品である。
THIS PRODUCT IS LEAD FREE OF 53395-***9.

7	53395-1479	140
9	53395-1079	100
12	53395-6679	66
20	53395-3479	34
27	53395-0279	20

RELEASED EC NO: J2005-0825 DRWN: MNABEI 2004/09/17 CHKD: KTOJO 2004/09/17 APPR: NUKITA 2004/09/17 0	QUALITY SYMBOLS ■ = 0 CRITICAL □ = 0 MAJOR ▽ = 0 ZERO DEFECT ▽ = 0 S.P.C.	GENERAL TOLERANCES (UNLESS SPECIFIED) DIMENSIONS ± --- ANGULAR ± 3 ° DRAFT WHERE APPLICABLE MUST REMAIN WITHIN DIMENSIONS	DIMENSION STYLE MM ONLY DRAWN BY: MNABEI DATE: '04/09/16 CHECKED BY: KTOJO DATE: '04/09/16 APPROVED BY: NUKITA DATE: '04/09/16 MATERIAL NO. SEE CHART	SCALE 10:1 DESIGN UNITS METRIC THIRD ANGLE PROJECTION	TITLE 53395-***8 STICK PACKAGING -LEAD FREE- MOLEX INCORPORATED DOCUMENT NO. SD-53395-003 SHEET NO. 1 OF 1
	53395-***8 STICK PACKAGING -LEAD FREE- MOLEX INCORPORATED				
	SEE CHART SD-53395-003 1 OF 1				
	THIS DRAWING CONTAINS INFORMATION THAT IS PROPRIETARY TO MOLEX INCORPORATED AND SHOULD NOT BE USED WITHOUT WRITTEN PERMISSION				