

FEATURES AND SPECIFICATIONS

Features and Benefits

- Optimizes terminal-to-housing retention
- Virtually eliminates terminal backout when TPA is locked into place
- Upon seating TPA, audible click denotes system activation
- White/black color contrast provides easy identification of TPA system
- Positive locking latch secures housing to mating connector
- Anti-entanglement/overstress ribs prevent discrete wires from catching under latch during harness manufacturing and storage

Reference Information

Packaging: Bag

UL File No.: E29179

CSA File No.: LR19980

Mates with: 70018, 70107A/B, 70543, 70545, 70553 and 70555

Use with: 73838 TPA and 70058 or 71851 crimp terminals

Designed In: Inches



2.54mm (.100") Pitch

SL™

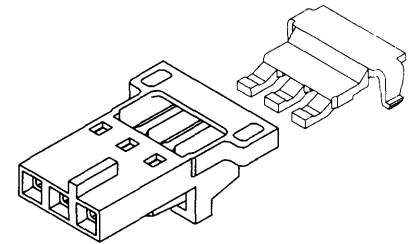
Crimp Housing

70066/73838

Single Row

Version N, TPA

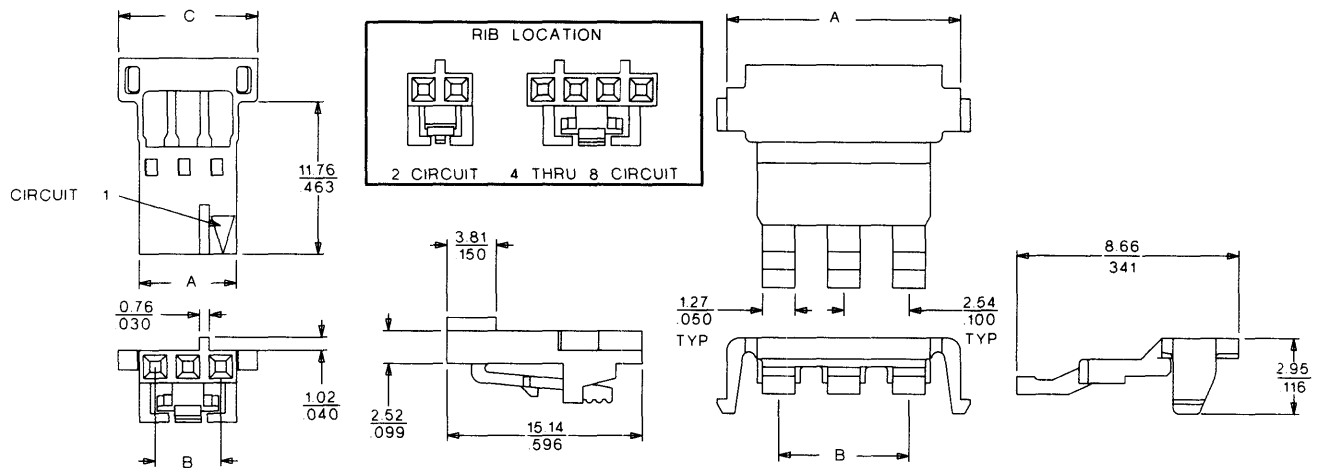
with Positive Latch



2.54mm (.100") Pitch



CATALOG DRAWING (FOR REFERENCE ONLY)



ORDERING INFORMATION AND DIMENSIONS

Circuits	70066 Version N TPA Crimp Housing				73838 TPA		
	Order No	Dimension			Order No.	Dimension	
		A	B	C		A	B
2	50-57-9702	5.00 (.197)	2.54 (.100)	8.26 (.325)	73838-0002	6.58 (.259)	2.54 (.100)
3	50-57-9703	7.54 (.297)	5.08 (.200)	10.80 (.425)	73838-0003	9.12 (.359)	5.08 (.200)
4	50-57-9704	10.08 (.397)	7.62 (.300)	13.34 (.525)	73838-0004	11.66 (.459)	7.62 (.300)
5	50-57-9705	12.62 (.497)	10.16 (.400)	15.88 (.625)	73838-0005	14.20 (.559)	10.16 (.400)
6	50-57-9706	15.16 (.597)	12.70 (.500)	18.42 (.725)	73838-0006	16.74 (.659)	12.70 (.500)
7	50-57-9707	17.70 (.697)	15.24 (.600)	20.96 (.825)	73838-0007	19.28 (.759)	15.24 (.600)
8	50-57-9708	20.24 (.797)	17.78 (.700)	23.50 (.925)	73838-0008	21.82 (.899)	17.78 (.700)