

## FEATURES AND SPECIFICATIONS

### Features and Benefits

- Polarized
- Latch window retains positive lock on 70013 after mating
- 4 wall shielding provides unmated pin protection
- Standoffs minimize flux retention
- 4-sided smooth surface pin for quality interface

### Reference Information

Product Specification: PS-8723

Packaging: Tube

UL File No.: E29179 (H)

Mates With: 8724 Version A—C-Grid Receptacles, and 70450A crimp housing

8724 Version B—70013A (10 to 50 circuits)

Designed In: Inches

### Electrical

Voltage: 250V

Current: 3.0A

Contact Resistance: 15mΩ max.

Dielectric Withstanding Voltage: 1500V

Insulation Resistance: 1000 MΩ min.

### Mechanical

Pin Retention to Housing: 17.79N (4 lb)

Durability: 25 cycles Tin/Lead and 50 cycles Gold

### Physical

Housing: Glass-filled nylon, UL 94V-0

Contact: Phosphor Bronze

Plating: See Table

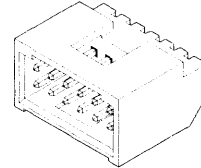
Operating Temperature: -40 to +105°C

**molex**® 2.54mm (.100") Pitch  
C-Grid®

**Shrouded Header**

**8724**

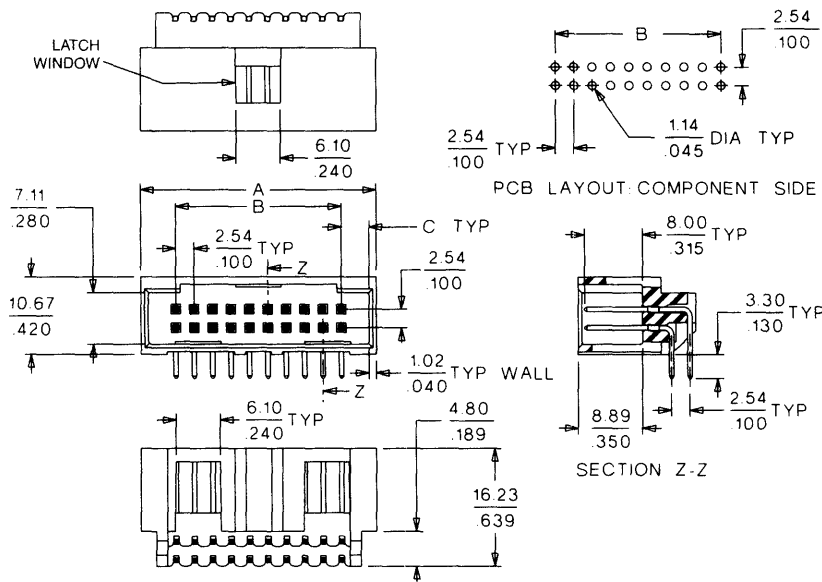
**Dual Row  
Right Angle**



**Not For Use With C-Grid III™ Components**

2.54mm (.100") Pitch

## CATALOG DRAWING (FOR REFERENCE ONLY)



## ORDERING INFORMATION AND DIMENSIONS

Plating Option	Order No.	
	Version A <sup>1</sup> C = 1.68mm (.066")	Version B C = 3.81mm (.150")
15μ" Gold	• 15-29-70XX	15-29-72XX
30μ" Gold	• 15-41-80XX	15-41-82XX
150μ" Tin/Lead	• 15-42-70XX	15-42-72XX

Replace XX with no. of circuits, 06-72 (even only)

Circuits	Dimension			
	Version A		Version B	
	A	B	A	B
6*	10.47 (.412)	5.08 (.200)	14.74 (.580)	5.08 (.200)
8*	13.01 (.512)	7.62 (.300)	17.28 (.680)	7.62 (.300)
10	15.55 (.612)	10.16 (.400)	19.82 (.780)	10.16 (.400)
12	18.09 (.712)	12.70 (.500)	22.36 (.880)	12.70 (.500)
14	20.63 (.812)	15.24 (.600)	24.90 (.980)	15.24 (.600)
16	23.17 (.912)	17.78 (.700)	27.44 (1.080)	17.78 (.700)
18	25.71 (1.012)	20.32 (.800)	29.98 (1.180)	20.32 (.800)
20	28.25 (1.112)	22.86 (.900)	32.52 (1.280)	22.86 (.900)
22	30.79 (1.212)	25.40 (1.000)	35.06 (1.380)	25.40 (1.000)
24	33.33 (1.312)	27.94 (1.100)	37.60 (1.480)	27.94 (1.100)
26	35.87 (1.412)	30.48 (1.200)	40.14 (1.580)	30.48 (1.200)
28	38.41 (1.512)	33.02 (1.300)	42.68 (1.680)	33.02 (1.300)
30	40.95 (1.612)	35.56 (1.400)	45.22 (1.780)	35.56 (1.400)
32	43.49 (1.712)	38.10 (1.500)	47.76 (1.880)	38.10 (1.500)
34	46.03 (1.812)	40.64 (1.600)	50.30 (1.980)	40.64 (1.600)
36	48.57 (1.912)	43.18 (1.700)	52.84 (2.080)	43.18 (1.700)
38	51.11 (2.012)	45.72 (1.800)	55.38 (2.180)	45.72 (1.800)

Circuits	Dimension			
	Version A		Version B	
	A	B	A	B
40	53.65 (2.112)	48.26 (1.900)	57.92 (2.280)	48.26 (1.900)
42	56.19 (2.212)	50.80 (2.000)	60.46 (2.380)	50.80 (2.000)
44	58.73 (2.312)	53.34 (2.100)	63.00 (2.480)	53.34 (2.100)
46	61.27 (2.412)	55.88 (2.200)	65.54 (2.580)	55.88 (2.200)
48	63.81 (2.512)	58.42 (2.300)	68.08 (2.680)	58.42 (2.300)
50	66.35 (2.612)	60.96 (2.400)	70.62 (2.780)	60.96 (2.400)
52	68.89 (2.712)	63.50 (2.500)	73.16 (2.880)	63.50 (2.500)
54	71.43 (2.812)	66.04 (2.600)	75.70 (2.980)	66.04 (2.600)
56	73.97 (2.912)	68.58 (2.700)	78.24 (3.080)	68.58 (2.700)
58	76.51 (3.012)	71.12 (2.800)	80.78 (3.180)	71.12 (2.800)
60	79.05 (3.112)	73.66 (2.900)	83.32 (3.280)	73.66 (2.900)
62	81.59 (3.212)	76.20 (3.000)	85.86 (3.380)	76.20 (3.000)
64	84.13 (3.312)	78.74 (3.100)	88.40 (3.480)	78.74 (3.100)
66	86.67 (3.412)	81.28 (3.200)	90.94 (3.580)	81.28 (3.200)
68	89.21 (3.512)	83.82 (3.300)	93.48 (3.680)	83.82 (3.300)
70	91.75 (3.612)	86.36 (3.400)	96.02 (3.780)	86.36 (3.400)
72	94.29 (3.712)	88.90 (3.500)	98.56 (3.880)	88.90 (3.500)

\* US Standard Product, available through Molex franchised distributors  
 \* Note: No latching window available for 6-circuit and 8-circuit—Version A; No latching window available for 6-circuit—Version B

<sup>1</sup> Version A is never to be used with interim clips  
 Note: Dimension C = End Wall