

PLEASE CHECK WWW.MOLEX.COM FOR LATEST PART INFORMATION

Part Number: [0026481156](#)
Status: **Active**
Description: 3.96mm (.156") Pitch KK® Header, Breakaway, Right Angle, with Friction Lock, 15 Circuits, Tin (Sn) Plating

Documents:

| | |
|---|--|
| 3D Model | Product Specification PS-08-50 (PDF) |
| Packaging Specification (PDF) | RoHS Certificate of Compliance (PDF) |
| Drawing (PDF) | |

Agency Certification

| | |
|-----|---------|
| CSA | LR19980 |
| UL | E29179 |

General

| | |
|----------------|-----------------------|
| Product Family | PCB Headers |
| Series | 41672 |
| Application | Wire-to-Board |
| Product Name | KK® |

Physical

| | |
|--------------------------------|--------------|
| Breakaway | Yes |
| Circuits (Loaded) | 15 |
| Circuits (maximum) | 15 |
| Color - Resin | Black |
| Durability (mating cycles max) | 25 |
| Flammability | 94V-0 |
| Glow-Wire Compliant | No |
| Lock to Mating Part | Yes |
| Material - Metal | Brass |
| Material - Plating Mating | Tin |
| Material - Plating Termination | Tin |
| Material - Resin | Polyester |
| Number of Rows | 1 |
| Orientation | Right Angle |
| PC Tail Length (in) | 0.212 In |
| PC Tail Length (mm) | 5.38 mm |
| PCB Locator | No |
| PCB Retention | None |
| PCB Thickness Recommended (in) | 0.062 In |
| PCB Thickness Recommended (mm) | 1.60 mm |
| Packaging Type | Bag |
| Pitch - Mating Interface (in) | 0.156 In |
| Pitch - Mating Interface (mm) | 3.96 mm |
| Plating min: Mating (µin) | 200 |
| Plating min: Mating (µm) | 5 |
| Plating min: Termination (µin) | 200 |
| Plating min: Termination (µm) | 5 |
| Polarized to Mating Part | No |
| Polarized to PCB | Yes |
| Shrouded | No |
| Stackable | No |
| Temperature Range - Operating | 0°C to +75°C |
| Termination Interface: Style | Through Hole |

Electrical



image - Reference only

Series

EU RoHS

ELV and RoHS Compliant
REACH SVHC Contains SVHC: No
Halogen-Free Status
Not Reviewed

China RoHS



Need more information on product environmental compliance?

Email productcompliance@molex.com
 For a multiple part number RoHS Certificate of Compliance, [click here](#)

Please visit the [Contact Us](#) section for any non-product compliance questions.

Search Parts in this Series

[41672Series](#)

Mates With

[3069](#) , [3215](#) , [2139](#) , [2145](#) , [6442](#) , [7674](#) , [7675](#) , [41695](#) , [41815](#)

| | |
|-------------------------------|------|
| Current - Maximum per Contact | 7A |
| Voltage - Maximum | 250V |

Solder Process Data

| | |
|--|------------------------|
| Duration at Max. Process Temperature (seconds) | 5 |
| Lead-free Process Capability | Wave Capable (TH only) |
| Max. Cycles at Max. Process Temperature | 1 |
| Process Temperature max. C | 235 |

Material Info

| | |
|-----------------|-----------------|
| Old Part Number | A-41672-A15A102 |
|-----------------|-----------------|

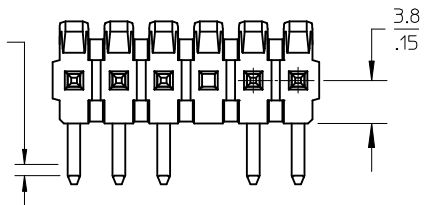
Reference - Drawing Numbers

| | |
|-----------------------|----------------------------|
| Product Specification | PS-08-50 |
| Sales Drawing | SD-41672-001, SD-41672-002 |

This document was generated on 03/22/2010

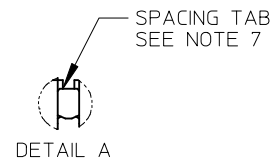
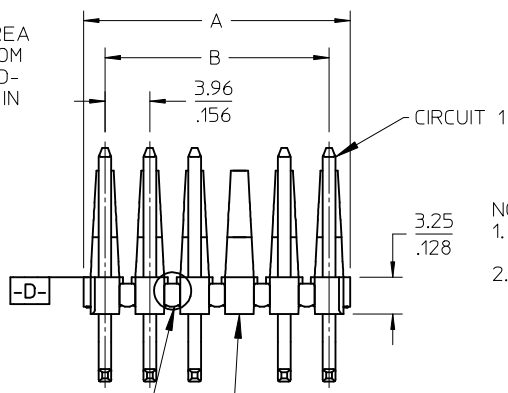
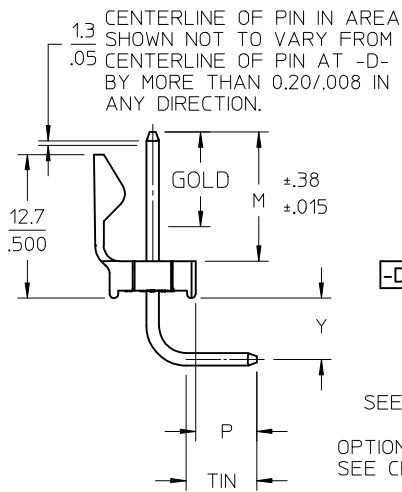
PLEASE CHECK WWW.MOLEX.COM FOR LATEST PART INFORMATION

CENTERLINE OF PIN IN AREA SHOWN NOT TO VARY FROM CENTERLINE OF PIN AT -D- BY MORE THAN 0.13/.005 IN ANY DIRECTION.



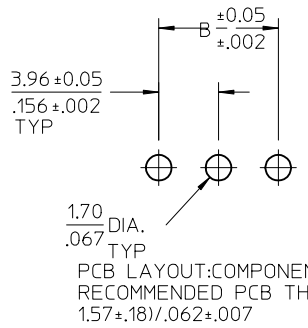
A-41672- * N * * * *
 OPTION - PACKING
 A= 2161 PIN- BULK PACK
 B= 43294 PIN- BULK PACK
 NO OF CKTS
 DIM M.L.P
 PLATING
 VOID LOCATIONS
 BLANK=NO VOIDS
 NO=CKT NO VOIDED
 MULT-VOIDS=51 UP

| CIRCUIT | A | B |
|---------|----------------------------|----------------|
| 2 | 6.78/7.87 .267/1.310 | 3.96 .156 |
| 3 | 10.74/11.84 .423/1.466 | 7.92 .312 |
| 4 | 14.71/15.80 .579/1.622 | 11.89 .468 |
| 5 | 18.67/19.76 .735/1.778 | 15.85 .624 |
| 6 | 22.63/23.72 .891/1.934 | 19.81 .780 |
| 7 | 26.59/27.69 1.047/1.090 | 23.77 .936 |
| 8 | 30.56/31.65 1.203/1.246 | 27.74 1.092 |
| 9 | 34.52/35.61 1.359/1.402 | 31.70 1.248 |
| 10 | 38.48/39.57 1.515/1.558 | 35.66 1.404 |
| 11 | 42.44/43.54 1.671/1.714 | 39.62 1.560 |
| 12 | 46.41/47.50 1.827/1.870 | 43.59 1.716 |
| 13 | 50.37/51.46 1.983/2.026 | 47.55 1.872 |
| 14 | 54.33/55.42 2.139/2.182 | 51.51 2.028 |
| 15 | 58.29/59.39 2.295/2.338 | 55.47 2.184 |
| 16 | 62.26/63.35 2.451/2.494 | 59.44 2.340 |
| 17 | 66.22/67.31 2.607/2.650 | 63.40 2.496 |
| 18 | 70.18/71.27 2.763/2.806 | 67.36 2.652 |
| 19 | 74.14/75.23 2.919/2.962 | 71.32 2.808 |
| 20 | 78.11/79.20 3.075/3.118 | 75.29 2.964 |
| 21 | 82.07/83.16 3.231/3.274 | 79.25 3.120 |
| 22 | 86.03/87.12 3.387/3.430 | 83.21 3.276 |
| 23 | 89.94/91.08 3.541/3.586 | 87.17 3.432 |
| 24 | 93.85/95.00 3.695/3.740 | 91.14 3.588 |



- NOTES:
 1. MATERIAL: HEADER: POLYESTER, 94V-0, MOLDED BLACK PIN: BRASS
 2. FINISH:
 (102) OVERALL TIN: 0.00508/.000200 MIN OVER 0.00254/.000100 MIN COPPER.
 (154) OVERALL TIN: 0.00254/.000100 MIN OVER 0.00127/.000050 MIN NICKEL.
 (208) SELECT GOLD: 0.00038/.000015 MIN, *SELECT TIN: 0.00254/.000100 MIN, OVERALL NICKEL UNDERPLATE: 0.00127/.000050 MIN.
 (228) SELECT GOLD: 0.00076/.000030 MIN, *SELECT TIN: 0.00254/.000100 MIN, OVERALL NICKEL UNDERPLATE: 0.00127/.000050 MIN.
 (501) OVERALL GOLD: 0.00051/.000020 MIN OVER 0.00076/.000030 MIN NICKEL.
 (503) OVERALL GOLD: 0.00076/.000030 MIN OVER 0.00127/.000050 MIN NICKEL.
 *THE PRIMARY SHIPPING CARTON WILL BE LABELED "COMPLIANT TO RoHS DIRECTIVE 2002/95/EC AND ELV ANNEX II OF DIRECTIVE 2000/53/EC". CARTONS WITHOUT THIS LABEL MAY CONTAIN PRODUCT WITH TIN/LEAD PLATINGS.
 3. PRODUCT SPECIFICATION: PS-08-50.
 4. PACKAGING INFORMATION: SEE TABLES
 5. SOLDERABILITY: PER SMES-152.
 6. PIN PUSH-OUT FORCE: PRIOR TO SOLDERING, A 3 LB. MINIMUM FORCE IN EITHER DIRECTION SHALL BE REQUIRED TO PUSH THE PIN OUT OF THE HEADER.
 7. PARTS ARE STACKABLE END TO END ON 3.96/.156 CENTERS.(SPACING TABS MUST BE REMOVED ON CIRCUIT SIZES 1-23 BEFORE PARTS ARE STACKABLE.
 8. PARTS WILL CONFORM TO CLASS B REQUIREMENTS OF COSMETIC SPECIFICATION PS-45499-002.

SEE DETAIL A
 OPTIONAL VOIDED CKT. SEE CHART FOR LOCATIONS



| | | | |
|-------|-----|---|-------------|
| 2-* | AB4 | ADD 41672-0228 EC NO: UCP2009-2938 DRWN:MK LIPPER 2009/06/12 CHKD:SSOUSEK 2009/06/15 APPR:FSM TH 2009/06/15 | DESCRIPTION |
| 1 | AB4 | | |
| SHEET | REV | | |
| | AB4 | REV | |

| |
|-----------------|
| QUALITY SYMBOLS |
| ▽=0 |
| ▽=0 |

| GENERAL TOLERANCES (UNLESS SPECIFIED) | |
|--|--------|
| mm | INCH |
| 4 PLACES ± --- | ± --- |
| 3 PLACES ± --- | ± .010 |
| 2 PLACES ± 0.25 | ± .015 |
| 1 PLACE ± 0.38 | ± --- |
| ANGULAR ±1/2° | |
| DRAFT WHERE APPLICABLE MUST REMAIN WITHIN DIMENSIONS | |

| DIMENSION STYLE | |
|-----------------|----------|
| MM/IN | |
| DRAWN BY | DATE |
| JSCHAFFER | 12-5-03 |
| CHECKED BY | DATE |
| KSAMIEC | 12-12-03 |
| APPROVED BY | DATE |
| MARGULIS | 12-16-03 |
| MATERIAL NO. | |
| SEE CHART | |
| SIZE | |
| A | |

| | | |
|---|--------------|------------------------|
| SCALE | DESIGN UNITS | THIRD ANGLE PROJECTION |
| 2:1 | INCH | |
| TITLE | | |
| KK .156 HEADER ASSEMBLY FRICTION LOCK BREAKAWAY RIGHT ANGLE | | |
| MOLEX MOLEX INCORPORATED | | |
| DOCUMENT NO. | SHEET NO. | |
| SD-41672-001 | 1 OF * | |
| THIS DRAWING CONTAINS INFORMATION THAT IS PROPRIETARY TO MOLEX INCORPORATED AND SHOULD NOT BE USED WITHOUT WRITTEN PERMISSION | | |

| | |
|----------------|---------------|
| Header No: | 41186-A-AN |
| Pin No: | 2161-37(102) |
| Pin Length L | 1.100 / 27.90 |
| Mating M | .450 / 11.43 |
| Gold: | NA |
| Bend Height: Y | .213 / 5.41 |
| PC Tail P | .212 / 5.38 |
| Tin: | OVERALL |
| Pack Per | PK-41672-001 |

| | |
|----------------|---------------|
| Header No: | 41186-A-AN |
| Pin No: | 43294-0569 |
| Pin Length L | 1.100 / 27.90 |
| Mating M | .450 / 11.43 |
| Gold: | .270 / 6.86 |
| Bend Height: Y | .213 / 5.41 |
| PC Tail P | .212 / 5.38 |
| Tin: | .200 / 5.08 |
| Pack Per | PK-41672-001 |

| | |
|----------------|---------------|
| Header No: | 41186-A-AN |
| Pin No: | 43294-0570 |
| Pin Length L | 1.100 / 27.90 |
| Mating M | .450 / 11.43 |
| Gold: | .270 / 6.86 |
| Bend Height: Y | .213 / 5.41 |
| PC Tail P | .212 / 5.38 |
| Tin: | .200 / 5.08 |
| Pack Per | PK-41672-001 |

| | |
|----------------|---------------|
| Header No: | 41186-A-AN |
| Pin No: | 2161-37(501) |
| Pin Length L | 1.100 / 27.90 |
| Mating M | .450 / 11.43 |
| Gold: | OVERALL |
| Bend Height: Y | .213 / 5.41 |
| PC Tail P | .212 / 5.38 |
| Tin: | NA |
| Pack Per | PK-41672-001 |

| Ckts | Material No | Engineer Number |
|------|-------------|-----------------|
| 2 | 026481026 | A-41672-A02A102 |
| 3 | 026481036 | A-41672-A03A102 |
| 4 | 026481046 | A-41672-A04A102 |
| 5 | 026481056 | A-41672-A05A102 |
| 6 | 026481066 | A-41672-A06A102 |
| 7 | 026481076 | A-41672-A07A102 |
| 8 | 026481086 | A-41672-A08A102 |
| 9 | 026481096 | A-41672-A09A102 |
| 10 | 026481106 | A-41672-A10A102 |
| 11 | 026481116 | A-41672-A11A102 |
| 12 | 026481126 | A-41672-A12A102 |
| 13 | 026481136 | A-41672-A13A102 |
| 14 | 026481146 | A-41672-A14A102 |
| 15 | 026481156 | A-41672-A15A102 |
| 16 | 026481166 | A-41672-A16A102 |
| 17 | 026481176 | A-41672-A17A102 |
| 18 | 026481186 | A-41672-A18A102 |
| 19 | 026481196 | A-41672-A19A102 |
| 20 | 026481206 | A-41672-A20A102 |
| 21 | 026481216 | A-41672-A21A102 |
| 22 | 026481226 | A-41672-A22A102 |
| 23 | 026481236 | A-41672-A23A102 |
| 24 | 026481246 | A-41672-A24A102 |

| Material No | Engineer Number |
|-------------|-----------------|
| 41672-0001 | A-41672-B02A208 |
| 41672-0002 | A-41672-B03A208 |
| 41672-0003 | A-41672-B04A208 |
| 41672-0004 | A-41672-B05A208 |
| 41672-0005 | A-41672-B06A208 |
| 41672-0006 | A-41672-B07A208 |
| 41672-0007 | A-41672-B08A208 |
| 41672-0008 | A-41672-B09A208 |
| 41672-0009 | A-41672-B10A208 |
| 41672-0010 | A-41672-B11A208 |
| 41672-0011 | A-41672-B12A208 |
| 41672-0012 | A-41672-B13A208 |
| 41672-0013 | A-41672-B14A208 |
| 41672-0014 | A-41672-B15A208 |
| 41672-0015 | A-41672-B16A208 |
| 41672-0016 | A-41672-B17A208 |
| 41672-0017 | A-41672-B18A208 |
| 41672-0018 | A-41672-B19A208 |
| 41672-0019 | A-41672-B20A208 |
| 41672-0020 | A-41672-B21A208 |
| 41672-0021 | A-41672-B22A208 |
| 41672-0022 | A-41672-B23A208 |
| 41672-0023 | A-41672-B24A208 |

| Material No | Engineer Number |
|-------------|-----------------|
| 41672-0024 | A-41672-B02A228 |
| 41672-0025 | A-41672-B03A228 |
| 41672-0026 | A-41672-B04A228 |
| 41672-0027 | A-41672-B05A228 |
| 41672-0028 | A-41672-B06A228 |
| 41672-0029 | A-41672-B07A228 |
| 41672-0030 | A-41672-B08A228 |
| 41672-0031 | A-41672-B09A228 |
| 41672-0032 | A-41672-B10A228 |
| 41672-0033 | A-41672-B11A228 |
| 41672-0034 | A-41672-B12A228 |
| 41672-0035 | A-41672-B13A228 |
| 41672-0036 | A-41672-B14A228 |
| 41672-0037 | A-41672-B15A228 |
| 41672-0038 | A-41672-B16A228 |
| 41672-0039 | A-41672-B17A228 |
| 41672-0040 | A-41672-B18A228 |
| 41672-0041 | A-41672-B19A228 |
| 41672-0042 | A-41672-B20A228 |
| 41672-0043 | A-41672-B21A228 |
| 41672-0044 | A-41672-B22A228 |
| 41672-0045 | A-41672-B23A228 |
| 41672-0046 | A-41672-B24A228 |

| Material No | Engineer Number |
|-------------|-----------------|
| 026482026 | A-41672-A02A501 |
| 026482036 | A-41672-A03A501 |
| 026482046 | A-41672-A04A501 |
| 026482056 | A-41672-A05A501 |
| 026482066 | A-41672-A06A501 |
| 026482076 | A-41672-A07A501 |
| 026482086 | A-41672-A08A501 |
| 026482096 | A-41672-A09A501 |
| 026482106 | A-41672-A10A501 |
| 026482116 | A-41672-A11A501 |
| 026482126 | A-41672-A12A501 |
| 026482136 | A-41672-A13A501 |
| 026482146 | A-41672-A14A501 |
| 026482156 | A-41672-A15A501 |
| 026482166 | A-41672-A16A501 |
| 026482176 | A-41672-A17A501 |
| 026482186 | A-41672-A18A501 |
| 026482196 | A-41672-A19A501 |
| 026482206 | A-41672-A20A501 |
| 026482216 | A-41672-A21A501 |
| 026482226 | A-41672-A22A501 |
| 026482236 | A-41672-A23A501 |
| 026482246 | A-41672-A24A501 |

| | | | | | |
|-------------------------|------|------------------------------|--------------------|---|------------------|
| AB4 | REV: | <u>ECR/ECN INFORMATION:</u> | <u>TITLE:</u> | KK 156 HEADER ASSEMBLY FRICTION LOCK BREAKAWAY RIGHT ANGLE | <u>SHEET No.</u> |
| | | EC No.: UCP2009-2938 | | | - 2 - |
| | | DATE: 6/15/2009 | | | |
| <u>DOCUMENT NUMBER:</u> | | <u>CREATED / REVISED BY:</u> | <u>CHECKED BY:</u> | <u>APPROVED BY:</u> | |
| SD- 41672 -001 | | MKIPPER | SSOUSEK | FSMITH | |

| | |
|----------------|---------------|
| Header No: | 41186-A-AN |
| Pin No: | 2161-96(501) |
| Pin Length L | 1.531 / 38.89 |
| Mating M | .500 / 12.70 |
| Gold: | OVERALL |
| Bend Height: Y | .213 / 5.41 |
| PC Tail P | .592 / 15.04 |
| Tin: | NA |
| Pack Per | PK-41672-001 |

| | |
|----------------|---------------|
| Header No: | 41186-A-AN |
| Pin No: | 2161-37(501) |
| Pin Length L | 1.100 / 27.90 |
| Mating M | .523 / 13.28 |
| Gold: | OVERALL |
| Bend Height: Y | .213 / 5.41 |
| PC Tail P | .136 / 3.45 |
| Tin: | NA |
| Pack Per | PK-41672-001 |

| | |
|----------------|----------------|
| Header No: | 41186-A-AN |
| Pin No: | 2161-19(102) |
| Pin Length L | 1.032 / 26.21 |
| Mating M | .458/11.63 REF |
| Gold: | NA |
| Bend Height: Y | .221 / 5.61 |
| PC Tail P | .125+- .015 |
| Tin: | OVERALL |
| Pack Per | PK-41672-001 |

| | |
|----------------|---------------|
| Header No: | 41186-A-AN |
| Pin No: | 2161-19(102) |
| Pin Length L | 1.032 / 26.21 |
| Mating M | .461 / 11.71 |
| Gold: | NA |
| Bend Height: Y | .213 / 5.41 |
| PC Tail P | .130 / 3.30 |
| Tin: | OVERALL |
| Pack Per | PK-41672-001 |

| Ckts | Material No | Engineer Number | Material No | Engineer Number | Material No | Engineer Number | Material No | Engineer Number |
|------|-------------|-----------------|-------------|-----------------|-------------|-----------------|-------------|-----------------|
| 2 | 41672-0109 | A-41672-A02D501 | 026586020 | A-41672-A02C501 | 026482029 | A-41672-A02E102 | 41672-0151 | A-41672-A02F102 |
| 3 | 41672-0110 | A-41672-A03D501 | 026586030 | A-41672-A03C501 | 026482039 | A-41672-A03E102 | 41672-0152 | A-41672-A03F102 |
| 4 | 41672-0111 | A-41672-A04D501 | 41672-0131 | A-41672-A04C501 | 026482049 | A-41672-A04E102 | 41672-0153 | A-41672-A04F102 |
| 5 | 41672-0112 | A-41672-A05D501 | 41672-0132 | A-41672-A05C501 | 026482059 | A-41672-A05E102 | 41672-0154 | A-41672-A05F102 |
| 6 | 41672-0113 | A-41672-A06D501 | 41672-0133 | A-41672-A06C501 | 026482069 | A-41672-A06E102 | 41672-0155 | A-41672-A06F102 |
| 7 | 41672-0114 | A-41672-A07D501 | 41672-0134 | A-41672-A07C501 | 026482079 | A-41672-A07E102 | 41672-0156 | A-41672-A07F102 |
| 8 | 41672-0115 | A-41672-A08D501 | 026586080 | A-41672-A08C501 | 026482089 | A-41672-A08E102 | 41672-0157 | A-41672-A08F102 |
| 9 | 41672-0116 | A-41672-A09D501 | 41672-0135 | A-41672-A09C501 | 026482099 | A-41672-A09E102 | 41672-0158 | A-41672-A09F102 |
| 10 | 41672-0117 | A-41672-A10D501 | 41672-0136 | A-41672-A10C501 | 026482109 | A-41672-A10E102 | 41672-0159 | A-41672-A10F102 |
| 11 | 41672-0118 | A-41672-A11D501 | 41672-0137 | A-41672-A11C501 | 026482119 | A-41672-A11E102 | 41672-0160 | A-41672-A11F102 |
| 12 | 41672-0119 | A-41672-A12D501 | 41672-0138 | A-41672-A12C501 | 026482129 | A-41672-A12E102 | 41672-0161 | A-41672-A12F102 |
| 13 | 41672-0120 | A-41672-A13D501 | 41672-0139 | A-41672-A13C501 | 026482139 | A-41672-A13E102 | 41672-0162 | A-41672-A13F102 |
| 14 | 41672-0121 | A-41672-A14D501 | 41672-0140 | A-41672-A14C501 | 026482149 | A-41672-A14E102 | 41672-0163 | A-41672-A14F102 |
| 15 | 41672-0122 | A-41672-A15D501 | 41672-0141 | A-41672-A15C501 | 026482159 | A-41672-A15E102 | 41672-0164 | A-41672-A15F102 |
| 16 | 41672-0123 | A-41672-A16D501 | 41672-0142 | A-41672-A16C501 | 026482169 | A-41672-A16E102 | 41672-0165 | A-41672-A16F102 |
| 17 | 41672-0124 | A-41672-A17D501 | 41672-0143 | A-41672-A17C501 | 026482179 | A-41672-A17E102 | 41672-0166 | A-41672-A17F102 |
| 18 | 41672-0125 | A-41672-A18D501 | 41672-0144 | A-41672-A18C501 | 026482189 | A-41672-A18E102 | 41672-0167 | A-41672-A18F102 |
| 19 | 41672-0126 | A-41672-A19D501 | 41672-0145 | A-41672-A19C501 | 026482199 | A-41672-A19E102 | 41672-0168 | A-41672-A19F102 |
| 20 | 41672-0127 | A-41672-A20D501 | 41672-0146 | A-41672-A20C501 | 026482209 | A-41672-A20E102 | 41672-0169 | A-41672-A20F102 |
| 21 | 41672-0128 | A-41672-A21D501 | 41672-0147 | A-41672-A21C501 | 026482219 | A-41672-A21E102 | 41672-0170 | A-41672-A21F102 |
| 22 | 41672-0129 | A-41672-A22D501 | 41672-0148 | A-41672-A22C501 | 026482229 | A-41672-A22E102 | 41672-0171 | A-41672-A22F102 |
| 23 | 41672-0130 | A-41672-A23D501 | 41672-0149 | A-41672-A23C501 | 026482239 | A-41672-A23E102 | 41672-0172 | A-41672-A23F102 |
| 24 | 026586242 | A-41672-A24D501 | 41672-0150 | A-41672-A24C501 | 026482249 | A-41672-A24E102 | 41672-0173 | A-41672-A24F102 |

| | | | | |
|--|------------------------------------|--|--------------------------------------|--------------------------------------|
| REV: AB4 | <u>ECR/ECN INFORMATION:</u> | <u>TITLE:</u> KK 156 HEADER ASSEMBLY FRICTION LOCK BREAKAWAY RIGHT ANGLE | <u>SHEET No.</u> | |
| | <u>EC No.:</u> UCP2009-2938 | | - 4 - | |
| | <u>DATE:</u> 6/15/2009 | | | |
| <u>DOCUMENT NUMBER:</u> SD- 41672 -001 | | <u>CREATED / REVISED BY:</u> MKIPPER | <u>CHECKED BY:</u> SSOUSEK | <u>APPROVED BY:</u> FSMITH |

| | |
|----------------|---------------|
| Header No: | 41186-A-AN |
| Pin No: | 2161-52(102) |
| Pin Length L | 1.063 / 27.00 |
| Mating M | .450 / 11.43 |
| Gold: | NA |
| Bend Height: Y | .213 / 5.41 |
| PC Tail P | .172 / 4.69 |
| Tin: | OVERALL |
| Pack Per | PK-41672-001 |

| | |
|----------------|---------------|
| Header No: | 41186-A-AN |
| Pin No: | 2161-37(102) |
| Pin Length L | 1.100 / 27.90 |
| Mating M | .450 / 11.43 |
| Gold: | NA |
| Bend Height: Y | .213 / 5.41 |
| PC Tail P | .212 / 5.38 |
| Tin: | OVERALL |
| Pack Per | PK-41672-001 |

| | |
|----------------|---------------|
| Header No: | 41186-A-AN |
| Pin No: | 2161-37(501) |
| Pin Length L | 1.100 / 27.90 |
| Mating M | .450 / 11.43 |
| Gold: | OVERALL |
| Bend Height: Y | .213 / 5.41 |
| PC Tail P | .212 / 5.38 |
| Tin: | NA |
| Pack Per | PK-41672-001 |

| Ckts | Material No | Engineer Number |
|------|-------------|-----------------|
| 2 | 41672-0176 | A-41672-A02G102 |
| 3 | 41672-0177 | A-41672-A03G102 |
| 4 | 41672-0178 | A-41672-A04G102 |
| 5 | 41672-0179 | A-41672-A05G102 |
| 6 | 41672-0180 | A-41672-A06G102 |
| 7 | 41672-0181 | A-41672-A07G102 |
| 8 | 41672-0182 | A-41672-A08G102 |
| 9 | 41672-0183 | A-41672-A09G102 |
| 10 | 41672-0184 | A-41672-A10G102 |
| 11 | 41672-0185 | A-41672-A11G102 |
| 12 | 41672-0186 | A-41672-A12G102 |
| 13 | 41672-0187 | A-41672-A13G102 |
| 14 | 41672-0188 | A-41672-A14G102 |
| 15 | 41672-0189 | A-41672-A15G102 |
| 16 | 41672-0190 | A-41672-A16G102 |
| 17 | 41672-0191 | A-41672-A17G102 |
| 18 | 41672-0192 | A-41672-A18G102 |
| 19 | 41672-0193 | A-41672-A19G102 |
| 20 | 41672-0194 | A-41672-A20G102 |
| 21 | 41672-0195 | A-41672-A21G102 |
| 22 | 41672-0196 | A-41672-A22G102 |
| 23 | 41672-0197 | A-41672-A23G102 |
| 24 | 41672-0198 | A-41672-A24G102 |

| Material No | Engineer Number | Void |
|-------------|--------------------|-----------------|
| 026504051 | A-41672-A05A102-51 | 2,4 |
| 41672-0047 | A-41672-A02A102-1 | 1 |
| 41672-0174 | A-41672-A23A102-51 | 18,20 .22 |
| 026504042 | A-41672-A04A102-02 | 2 |
| 026504061 | A-41672-A06A102-4 | 4 |
| 026504043 | A-41672-A04A102-3 | 3 |
| 026504062 | A-41672-A06A102-5 | 5 |
| 416720048 | A-41672-A09A102-51 | 2,3,4, 6,7,8 |
| 416720049 | A-41672-A14A102-12 | 12 |
| 026504102 | A-41672-A10A102-5 | 5 |
| 026504072 | A-41672-A07A102-2 | 2 |
| 41672-0175 | A-41672-A11A102-2 | 2 |
| 41672-0203 | A-41672-A14A102-51 | 2,6, 11,13 |
| 41672-0227 | A-41672-A05A102-2 | 2 |

| Material No | Engineer Number | Void |
|-------------|--------------------|------|
| 026504121 | A-41672-A12A501-51 | 4,6 |
| 026497063 | A-41672-A06A501-5 | 5 |

| | | | | |
|--|------------------------------------|--|--------------------------------------|--------------------------------------|
| REV: AB4 | <u>ECR/ECN INFORMATION:</u> | <u>TITLE:</u> KK 156 HEADER ASSEMBLY FRICTION LOCK BREAKAWAY RIGHT ANGLE | <u>SHEET No.</u> | |
| | <u>EC No.:</u> UCP2009-2938 | | - 5 - | |
| | <u>DATE:</u> 6/15/2009 | | | |
| <u>DOCUMENT NUMBER:</u> SD- 41672 -001 | | <u>CREATED / REVISED BY:</u> MKIPPER | <u>CHECKED BY:</u> SSOUSEK | <u>APPROVED BY:</u> FSMITH |

6

5

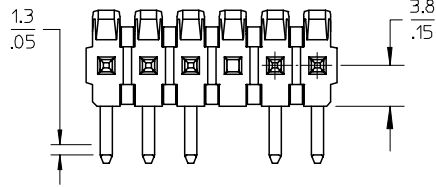
4

3

2

1

CENTERLINE OF PIN IN AREA SHOWN NOT TO VARY FROM CENTERLINE OF PIN AT -D- BY MORE THAN 0.13/.005 IN ANY DIRECTION.



A-41681- * N * * * *
 OPTION - PACKING
 A=BRASS - BULK PACK
 B=BRASS - TUBE PACK
 NO OF CKTS
 DIM M.L.P
 PLATING
 VOID LOCATIONS
 BLANK=NO VOIDS
 NO=CKT NO VOIDED
 MULT-VOIDS=51 UP

CENTERLINE OF PIN IN AREA SHOWN NOT TO VARY FROM CENTERLINE OF PIN AT -D- BY MORE THAN 0.20/.008 IN ANY DIRECTION.

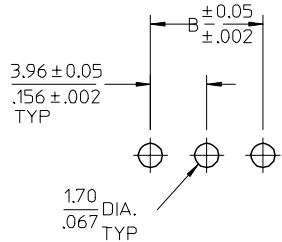


OPTIONAL VOIDED CKT. SEE CHART FOR LOCATIONS

NOTES:

- MATERIAL: HEADER: POLYESTER, 94V-0, MOLDED BLACK
- FINISH:
 (228) SELECT GOLD: 0.00076/.000030 MIN.
 *SELECT TIN: 0.00254/.000100 MIN.
 OVERALL NICKEL UNDERPLATE: 0.00127/.000050 MIN.
 *THE PRIMARY SHIPPING CARTON WILL BE LABELED "COMPLIANT TO ROHS DIRECTIVE 2002/95/EC AND ELV ANNEX II OF DIRECTIVE 2000/53/EC". CARTONS WITHOUT THIS LABEL MAY CONTAIN PRODUCT WITH TIN/LEAD PLATINGS.
- PRODUCT SPECIFICATION: PS-08-50.
- PACKAGING INFORMATION: SEE CHARTS
- SOLDERABILITY: PER SMES-152.
- PIN PUSH-OUT FORCE: PRIOR TO SOLDERING, A 3 LB. MINIMUM FORCE IN EITHER DIRECTION SHALL BE REQUIRED TO PUSH THE PIN OUT OF THE HEADER.
- PARTS ARE STACKABLE END TO END ON 3.96/.156 CENTERS.(SPACING TABS MUST BE REMOVED ON CIRCUIT SIZES 1-23 BEFORE PARTS ARE STACKABLE.

| CIRCUIT | A | B |
|---------|----------------------------|----------------|
| 2 | 6.78/7.87 .267/.310 | 3.96 .156 |
| 3 | 10.74/11.84 .423/.466 | 7.92 .312 |
| 4 | 14.71/15.80 .579/.622 | 11.89 .468 |
| 5 | 18.67/19.76 .735/.778 | 15.85 .624 |
| 6 | 22.63/23.72 .891/.934 | 19.81 .780 |
| 7 | 26.59/27.69 1.047/1.090 | 23.77 .936 |
| 8 | 30.56/31.65 1.203/1.246 | 27.74 1.092 |
| 9 | 34.52/35.61 1.359/1.402 | 31.70 1.248 |
| 10 | 38.48/39.57 1.515/1.558 | 35.66 1.404 |
| 11 | 42.44/43.54 1.671/1.714 | 39.62 1.560 |
| 12 | 46.41/47.50 1.827/1.870 | 43.59 1.716 |
| 13 | 50.37/51.46 1.983/2.026 | 47.55 1.872 |
| 14 | 54.33/55.42 2.139/2.182 | 51.51 2.028 |
| 15 | 58.29/59.39 2.295/2.338 | 55.47 2.184 |
| 16 | 62.26/63.35 2.451/2.494 | 59.44 2.340 |
| 17 | 66.22/67.31 2.607/2.650 | 63.40 2.496 |
| 18 | 70.18/71.27 2.763/2.806 | 67.36 2.652 |
| 19 | 74.14/75.23 2.919/2.962 | 71.32 2.808 |
| 20 | 78.11/79.20 3.075/3.118 | 75.29 2.964 |
| 21 | 82.07/83.16 3.231/3.274 | 79.25 3.120 |
| 22 | 86.03/87.12 3.387/3.430 | 83.21 3.276 |
| 23 | 89.94/91.08 3.541/3.586 | 87.17 3.432 |
| 24 | 93.85/95.00 3.695/3.740 | 91.14 3.588 |



PCB LAYOUT: COMPONENT SIDE
 RECOMMENDED PCB THICKNESS:
 (1.57 ± .18) / .062 ± .007

| | | |
|---|-------|-----|
| ADD DIMENSION EC NO: UCP2006-2296 DRWN: PRIDDER 2006/04/27 CHKD: ADERR 2006/04/28 APPR: FSMITH 2006/04/28 | 2-* | A1 |
| | 1 | A2 |
| | SHEET | REV |
| | | A2 |

| | |
|-----------------|-------------|
| QUALITY SYMBOLS | DESCRIPTION |
| ▽=0 | |
| ▽=0 | |

| | | |
|--|-----------------------|--------|
| GENERAL TOLERANCES (UNLESS SPECIFIED) | DIMENSION STYLE MM/IN | |
| | mm | INCH |
| 4 PLACES | ± --- | ± --- |
| 3 PLACES | ± --- | ± .010 |
| 2 PLACES | ± 0.25 | ± .015 |
| 1 PLACE | ± 0.38 | ± --- |
| ANGULAR ± 1/2° | | |
| DRAFT WHERE APPLICABLE MUST REMAIN WITHIN DIMENSIONS | | |

| | |
|---------------------------|------------------|
| DRAWN BY JSCHAFFER | DATE 12-5-03 |
| CHECKED BY KSAMIEC | DATE 12-12-03 |
| APPROVED BY MARGULIS | DATE 12-16-03 |
| MATERIAL NO. SEE CHART | |
| SIZE A | |

| | | |
|---|----------------------|------------------------|
| SCALE 2:1 | DESIGN UNITS INCH | THIRD ANGLE PROJECTION |
| TITLE KK .156 HEADER ASSEMBLY FRICTION LOCK BREAKAWAY RIGHT ANGLE (LEAD-FREE) | | |
| MOLEX INCORPORATED | | |
| DOCUMENT NO. SD-41672-002 | | SHEET NO. 1 OF * |
| THIS DRAWING CONTAINS INFORMATION THAT IS PROPRIETARY TO MOLEX INCORPORATED AND SHOULD NOT BE USED WITHOUT WRITTEN PERMISSION | | |

5

4

3

2

1

| | |
|----------------|---------------|
| Header No: | 41186-A-AN |
| Pin No: | 43294-0570 |
| Pin Length L | 1.100 / 27.90 |
| Mating M | .450 / 11.43 |
| Gold: | .270 / 6.86 |
| Bend Height: Y | .213 / 5.41 |
| PC Tail P | .212 / 5.38 |
| Tin: | .200 / 5.08 |
| Pack Per | PK-41672-001 |

| | |
|----------------|--|
| Header No: | |
| Pin No: | |
| Pin Length L | |
| Mating M | |
| Gold: | |
| Bend Height: Y | |
| PC Tail P | |
| Tin: | |
| Pack Per | |

| | |
|----------------|--|
| Header No: | |
| Pin No: | |
| Pin Length L | |
| Mating M | |
| Gold: | |
| Bend Height: Y | |
| PC Tail P | |
| Tin: | |
| Pack Per | |

| | |
|----------------|--|
| Header No: | |
| Pin No: | |
| Pin Length L | |
| Mating M | |
| Gold: | |
| Bend Height: Y | |
| PC Tail P | |
| Tin: | |
| Pack Per | |

| Ckts | Material No | Engineer Number | Material No | Engineer Number | Material No | Engineer Number | Material No | Engineer Number |
|------|-------------|-----------------|-------------|-----------------|-------------|-----------------|-------------|-----------------|
| 2 | | | | | | | | |
| 3 | | | | | | | | |
| 4 | | | | | | | | |
| 5 | | | | | | | | |
| 6 | 50-29-1898 | A-41672-B06A228 | | | | | | |
| 7 | | | | | | | | |
| 8 | | | | | | | | |
| 9 | | | | | | | | |
| 10 | | | | | | | | |
| 11 | | | | | | | | |
| 12 | | | | | | | | |
| 13 | | | | | | | | |
| 14 | | | | | | | | |
| 15 | | | | | | | | |
| 16 | | | | | | | | |
| 17 | | | | | | | | |
| 18 | | | | | | | | |
| 19 | | | | | | | | |
| 20 | | | | | | | | |
| 21 | | | | | | | | |
| 22 | | | | | | | | |
| 23 | | | | | | | | |
| 24 | | | | | | | | |

| | | | | | |
|-----------------------|------|-----------------------|--------|--|---------------|
| A1 | REV: | ECR/ECN INFORMATION: | TITLE: | KK 156 HEADER ASSEMBLY FRICITION LOCK BREAKAWAY RIGHT ANGLE (LEAD-FREE) | SHEET No. |
| | | EC No.: | | | - 2 - |
| | | DATE: | | | |
| DOCUMENT NUMBER: | | CREATED / REVISED BY: | | CHECKED BY: | APPROVED BY: |
| SD- 41672 -002 | | ADERR | | SSOUSEK | FSMITH |