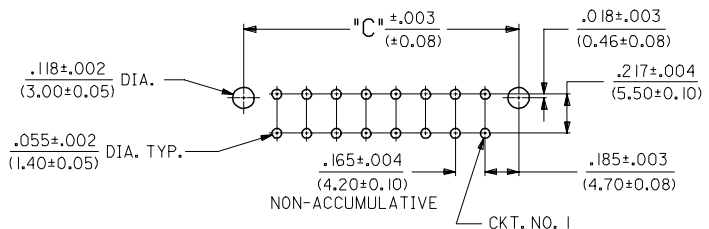
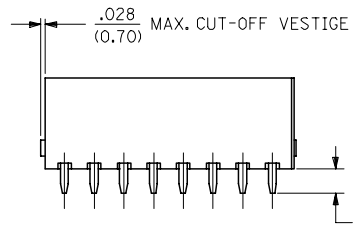
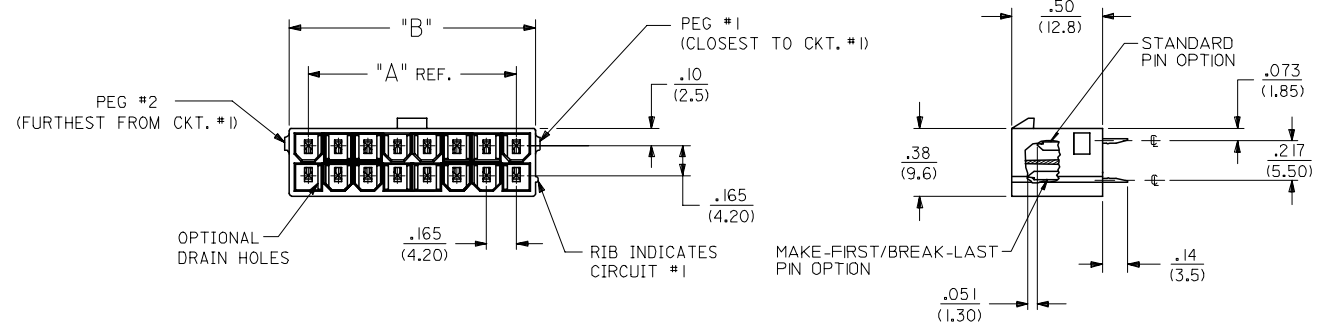


	13	12	11	10	9	8	7	6	5	4	3	2	1
	CIRCUIT SIZE	DIM. 'A'	DIM. 'B'	DIM. 'C'									
J	2	—	.21 (5.4)	.370 (9.40)									
	4	.17 (4.2)	.38 (9.6)	.535 (13.60)									
I	6	.33 (8.4)	.54 (13.8)	.701 (17.80)									
	8	.50 (12.6)	.71 (18.0)	.866 (22.00)									
	10	.66 (16.8)	.87 (22.2)	1.031 (26.20)									
H	12	.83 (21.0)	1.04 (26.4)	1.197 (30.40)									
	14	.99 (25.2)	1.20 (30.6)	1.362 (34.60)									
	16	1.16 (29.4)	1.37 (34.8)	1.528 (38.80)									
	18	1.32 (33.6)	1.54 (39.0)	1.693 (43.00)									
G	20	1.49 (37.8)	1.70 (43.2)	1.858 (47.20)									
	22	1.65 (42.0)	1.87 (47.4)	2.024 (51.40)									
	24	1.82 (46.2)	2.03 (51.6)	2.189 (55.60)									

NOTES:

- HOUSING MATERIAL AND OPTIONS: SEE CHART
- TERMINAL MATERIAL: BRASS ALLOY 260.
- PART MATES WITH MINI-FIT JR. RECEPTACLE # 5557.
- PART ALLOWS FOR UP TO .100/(2.54) MISALIGNMENT WITH MATING RECEPTACLE IN ANY DIRECTION. SEE MATING CONNECTOR DRAWINGS FOR SPECIFIC ALLOWANCES.
- TERMINAL PLATING:
  - A - .000035/(0.00089) MIN. BRIGHT TIN OVER .000020/(0.00051) MIN. COPPER OVERALL.
  - \*B - .000030/(0.00076) MIN. SELECT GOLD AND .000100/(0.00254) MIN. MATTE TIN OVER .000050/(0.00127) MIN. NICKEL OVERALL.
  - C - .000100/(0.00254) MIN. BRIGHT TIN OVER .000050/(0.00127) MIN. NICKEL OVERALL.
- \*THE PRIMARY SHIPPING CARTON WILL BE LABELED \*COMPLIANT TO ROHS DIRECTIVE 2002/95/EC AND ELV ANNEX II OF DIRECTIVE 2000/53/EC\*. CARTONS WITHOUT THIS LABEL MAY CONTAIN PRODUCT WITH TIN-LEAD PLATING.
- PRODUCT SPECIFICATION AND PROCESSING PARAMETERS SEE: PS-5556-001
- CONNECTOR ASSEMBLIES ARE NOT TO BE MATED OR UNMATED WHILE CIRCUITS ARE LIVE.
- LOCATION OF .118±.002/(3.00±0.05) DIA. HOLES ON P.C. BOARD IS FOR OPTIONAL PEGS.
- PARTS ARE NOT DESIGNED FOR CURRENT SHARING.

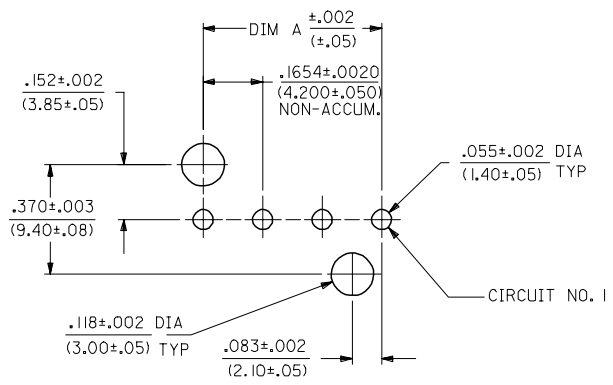


RECOMMENDED HOLE LAYOUT FOR .070/(1.78) MAX. THICK P.C. BOARD VIEWED FROM COMPONENT SIDE (SEE NOTE 8)

SEE SHEET 2 FOR SINGLE ROW PRODUCT

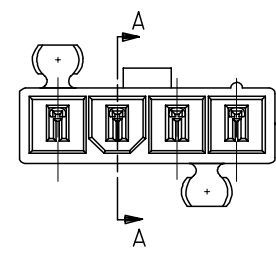
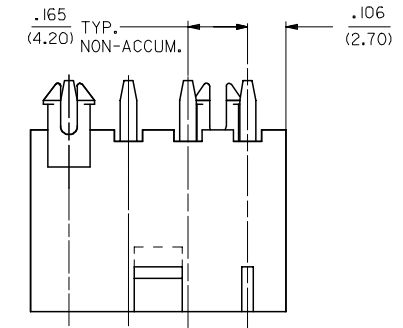
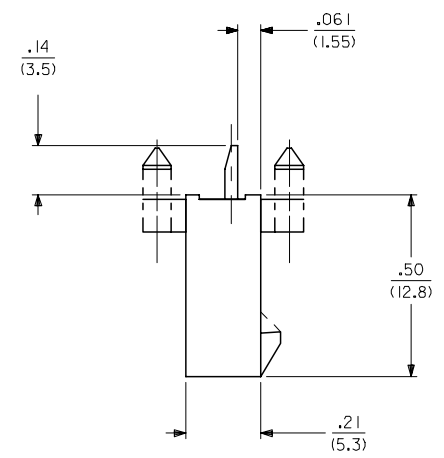
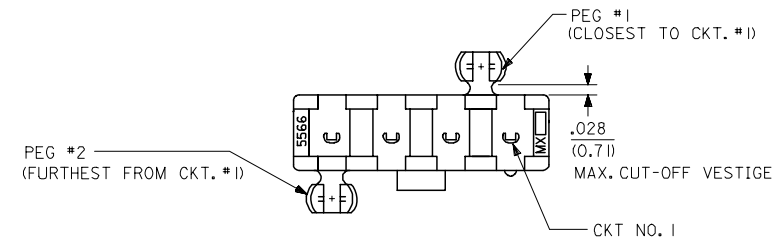
REV -0018 ASSY FC NO: UCP2006-2571 DRAWN: ADRIANOL 2006/05/02 CHKD: GPOLGAR 2006/05/02 APPR: ICOMERCJ 2006/05/03	QUALITY SYMBOLS 	GENERAL TOLERANCES (UNLESS SPECIFIED)		DIMENSION STYLE		SCALE	DESIGN UNITS	THIRD ANGLE PROJECTION
				IN/MM		2:1	METRIC	
		4 PLACES ± --- ± ---	DRAWN BY	DATE	TITLE			
		3 PLACES ± --- ± .010	AFG	1995/07/19	2-24 CKT VERT HDR ASSY W/PEGS REMOVED OPTION W/WO DRAIN HOLE MINI-FIT			
2 PLACES ± 0.25 ± .014	CHECKED BY	DATE	MATERIAL NO.					
1 PLACE ± 0.36 ± ---	RJF	1995/07/19	DOCUMENT NO.					
ANGULAR ±1/2°	APPROVED BY	DATE	SHEET NO.					
	RJF	1995/07/19	1 OF 3					
DRAFT WHERE APPLICABLE MUST REMAIN WITHIN DIMENSIONS		SEE SHEET 3		SDA-43588-****		MOLEX INCORPORATED		
		THIS DRAWING CONTAINS INFORMATION THAT IS PROPRIETARY TO MOLEX INCORPORATED AND SHOULD NOT BE USED WITHOUT WRITTEN PERMISSION						

CKT SIZE	DIM A	DIM B
4	.496 (12.60)	.709 (18.00)
5	.661 (16.80)	.874 (22.20)
6	.827 (21.00)	1.039 (26.40)
7	.992 (25.20)	1.205 (30.60)
8	1.157 (29.40)	1.370 (34.80)
9	1.323 (33.60)	1.535 (39.00)
10	1.488 (37.80)	1.701 (43.20)
11	1.654 (42.00)	1.866 (47.40)
12	1.819 (46.20)	2.031 (51.60)



RECOMMENDED HOLE LAYOUT FOR  
.070/(1.78) MAX. THICK P. C. BOARD  
VIEWED FROM COMPONENT SIDE  
(SEE NOTE 8)

SEE SHEET I FOR DUAL ROW PRODUCT



<b>SEE SHEET 1</b> FC NO: UCP2006-0933 DRAWN: ADRIANOL 2005/11/04 CHKD: GPOLGAR 2005/11/04 APPR: ICOMERCJ 2005/11/08 REV: D1	QUALITY SYMBOLS 	GENERAL TOLERANCES (UNLESS SPECIFIED)		DIMENSION STYLE <b>IN/MM</b>	SCALE <b>2:1</b>	DESIGN UNITS <b>METRIC</b>	THIRD ANGLE PROJECTION															
		<table border="1"> <thead> <tr> <th></th> <th>mm</th> <th>INCH</th> </tr> </thead> <tbody> <tr> <td>4 PLACES</td> <td>±.010</td> <td>±.0004</td> </tr> <tr> <td>3 PLACES</td> <td>±.014</td> <td>±.0005</td> </tr> <tr> <td>2 PLACES</td> <td>±.025</td> <td>±.0010</td> </tr> <tr> <td>1 PLACE</td> <td>±.036</td> <td>±.0014</td> </tr> </tbody> </table>		mm	INCH	4 PLACES	±.010	±.0004	3 PLACES	±.014	±.0005	2 PLACES	±.025	±.0010	1 PLACE	±.036	±.0014	DRAWN BY JW	DATE 2000/03/03	<b>5 CKT VERT HDR ASSY W/ PEGS REMOVED (SINGLE ROW) MINI-FIT</b>  <b>MOLEX INCORPORATED</b>  MATERIAL NO. SDA-43588-**** DOCUMENT NO. SDA-43588-**** SHEET NO. 2 OF 3		
			mm	INCH																		
		4 PLACES	±.010	±.0004																		
3 PLACES	±.014	±.0005																				
2 PLACES	±.025	±.0010																				
1 PLACE	±.036	±.0014																				
ANGULAR ±1/2°	CHECKED BY MB	DATE 2000/03/03																				
DRAFT WHERE APPLICABLE MUST REMAIN WITHIN DIMENSIONS	APPROVED BY RE	DATE 2000/03/03																				
THIS DRAWING CONTAINS INFORMATION THAT IS PROPRIETARY TO MOLEX INCORPORATED AND SHOULD NOT BE USED WITHOUT WRITTEN PERMISSION																						

