

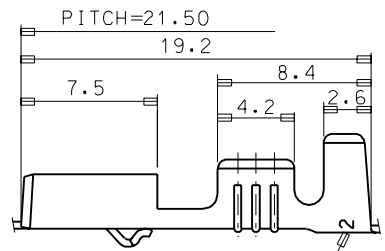
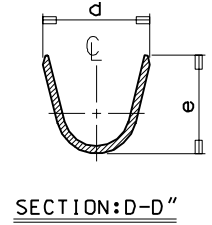
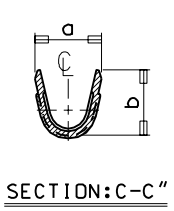
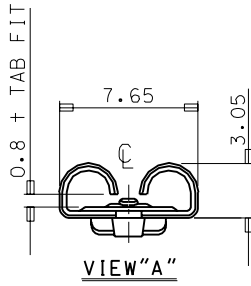
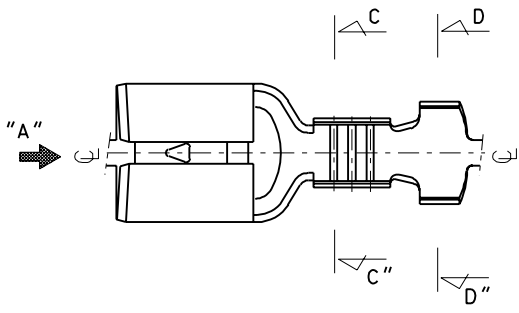
ENG. NO

EDP NO.

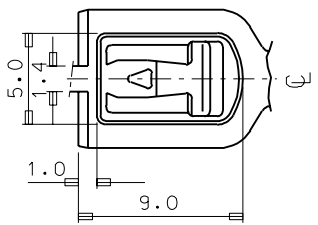
SIMILAR ITEM

PROJECT NO.

DO NOT SCALE DRAWING  
DIMENSION IN METRIC



TRADE MARK  
MK2



ENG.NO.	a	b	d	e	WIRE RANGE	INS. DIA.	Q' TY/REEL
35725-4510	2.7	3.0	4.6	4.4	AWG #22-#18	1.5-3.0	5,000
35725-4610	3.7	3.6	5.8	5.8	AWG #18-#14	2.2-3.6	5,000
35725-4710	5.9	5.2	7.5	6.2	AWG #14-#10	2.8-5.0	4,000

NOTES

1. MATERIAL: BRASS 0.40 THICKNESS
2. FINISH: PRE-TIN PLATING
3. MATING TAB THICKNESS: 0.8
4. RECOMMENDED LENGTH OF WIRE STRIP IS 5.5-6.0

LTR	REVISION RECORD	ECN	DR/CHK	DATE	ASS'Y PART		QTY/REEL OR PACK	SURFACE AREA	MATERIAL	WIRE RANGE	GENERAL TOLERANCES	MOLEX-KOREA CO.,LTD.
					DESCRIPTION	ENG.NO.						
B	REVISED	94-066		94.12.8								
A	NEW RELEASED	94-003		94.5.19								
					DIE FEED	APPL FEED	WBDW	IBDW	APP'D BY	SCALE	TITLE	1 of 1
				21.5	21.5				W. Y. YANG	4:1	.250 SAFE LOCK RECEPTACLE	
									CHK'D BY		ENG.NO.	REV B
									B. K. CHOI		SD35725-4510/4610/4710	