

REVISIONS AP

DO NOT SCALE FROM THIS PRINT

FIG. 1  
-01: THROUGH HOLE

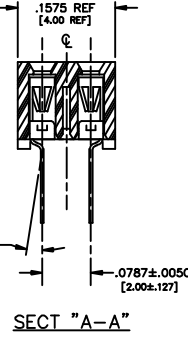
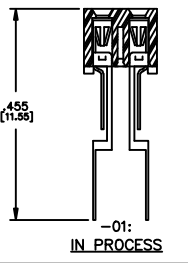
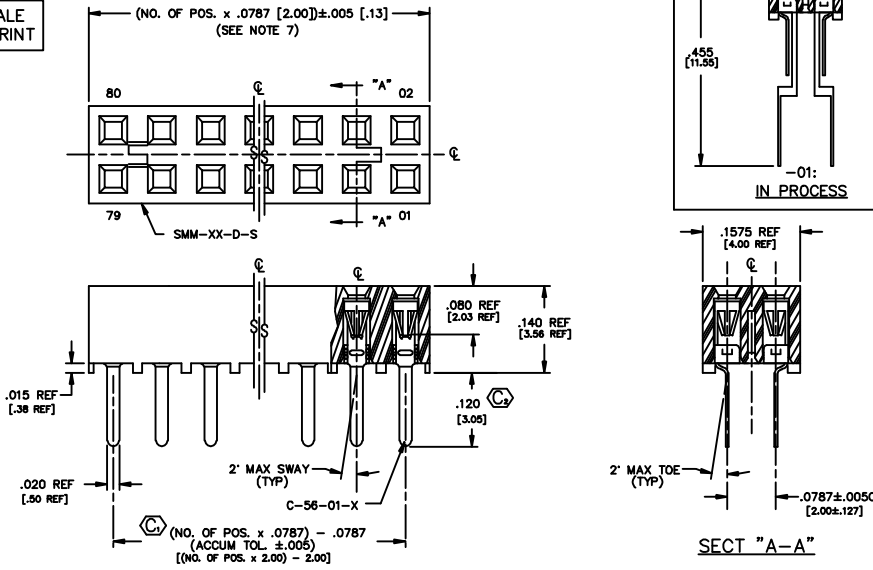
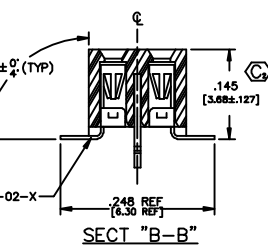
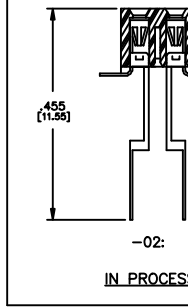
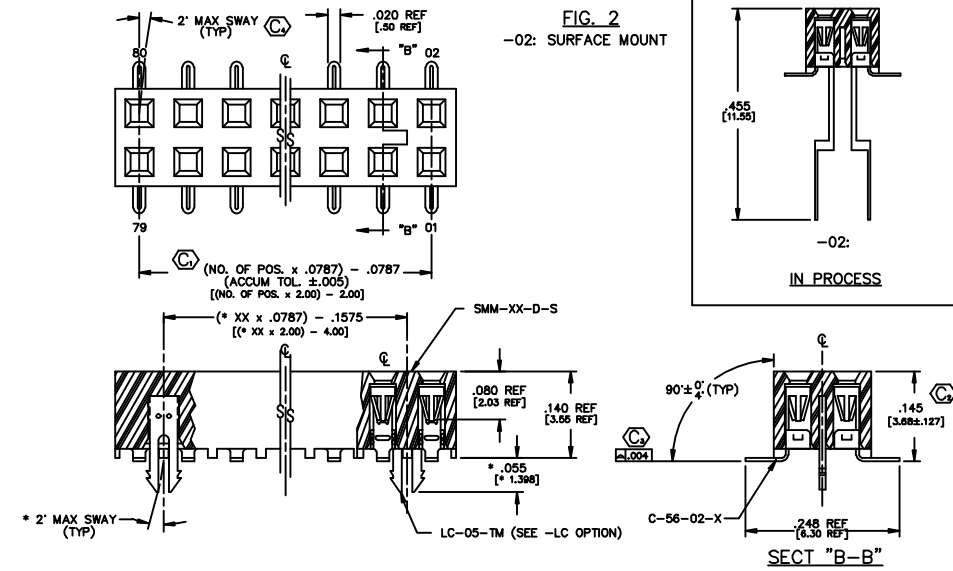


FIG. 2  
-02: SURFACE MOUNT



DIMENSIONS ARE IN INCHES UNLESS OTHERWISE NOTED		TOLERANCES ARE:	TITLE:	DWG NO.:
ONE PLACE DECIMALS: ± .1	THREE PLACE DECIMALS: ± .005	ANGLES	2 mm SOCKET STRIP	SMM-XX-XX-XX-D-XX-XX-X-XX
TWO PLACE DECIMALS: ± .01	FOUR PLACE DECIMALS: ± .0020	± 1°		SHEET 1 OF 2

NOTES:

- RETENTION FORCE IN BODY TO BE: 1 lbs. MIN
- INSERTION FORCE TO BE: 3.0 oz. MAX.
- WITHDRAWAL FORCE TO BE: 0.5 oz. MIN.
- ⊙ REPRESENTS CRITICAL DIMS. FOR STATISTICAL PROCESS CONTROL.
- [ ] DIMS ARE IN METRIC AND ARE NOT CONTROLLING DIMS.
- "-LC" OPTION FOR A 02 POSITION WILL HAVE ONLY ONE LOCKING CLIP (LC-05-T).
- "END WALLS" AFTER CUTTING SHOULD BE .017 ± .005.
- FOR -01 LEAD STYLE, LAYER PACKAGE POSITIONS -01 THRU -04.
- FOR -02 LEAD STYLE WITHOUT PICK & PLACE PAD, LAYER PACKAGE POSITION -02 ONLY.
- 02 THRU -05 POSITION WITH -K OR -P TO BE PACKAGED IN -TR ONLY. -06 THRU -40 POSITION AVAILABLE IN TUBE OR -TR PACKAGING.
- .010" MAX CUT FLASH.
- NO FLASH ALLOWED IN SOCKET OR EXTENDING BELOW LEADS.

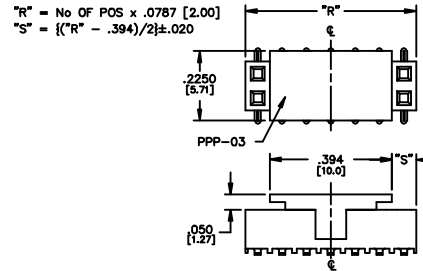
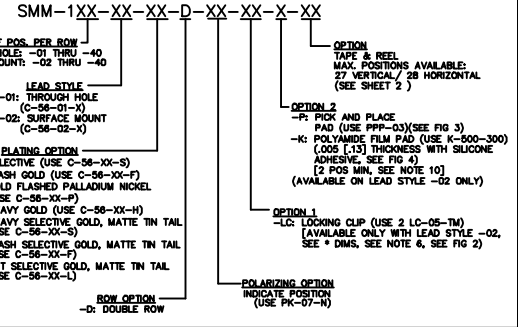
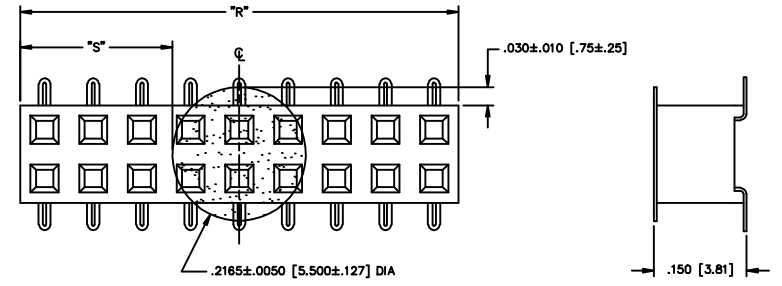


FIG. 3  
-P: PICK AND PLACE PAD  
(PLACE PPP-03 ABOUT C.L. AS SHOWN)  
(SEE NOTE 10)



NOTE: "R" = USED MEASURED DIMENSION (REF)  
"S" = {("R" - .2165 [5.50]) / 2} ± .020 [.51]

FIG. 4  
-K: POLYAMIDE FILM PAD  
[2 POSITION MINIMUM, SEE NOTE 10]

PROPRIETARY NOTE  
THIS DOCUMENT CONTAINS INFORMATION OF A PROPRIETARY NATURE AND IS THE PROPERTY OF SAMTEC. IT IS TO BE USED ONLY FOR THE PURPOSES AND IN THE MANNER SPECIFIED BY SAMTEC. IT IS NOT TO BE REPRODUCED, COPIED, OR TRANSMITTED IN ANY FORM OR BY ANY MEANS, ELECTRONIC OR MECHANICAL, INCLUDING PHOTOCOPYING, RECORDING, OR BY ANY INFORMATION STORAGE AND RETRIEVAL SYSTEM, WITHOUT THE WRITTEN PERMISSION OF SAMTEC.

EMPROF ASSEMBLY SAM  
SMM-102-XX-XX-D-XX-XX-XX-XX-XX

**samtec**

520 PARK EAST BLVD. NEW ALBANY, INDIANA 47150  
PHONE (812) 944-8733 P.O. BOX 1147  
CODE 55322

MADE BY: KOLS 5-21-91  
DEM

SMM-XX-XX-XX-D-XX-XX-X-XX  
SHEET 1 OF 2