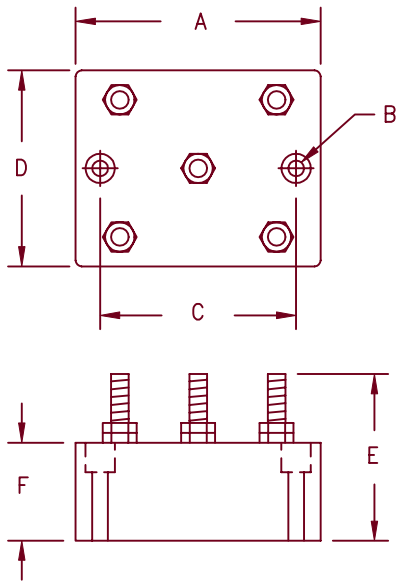


Encapsulated Assemblies EH Series



Dimensions			
	Inches	Millimeters	Notes
A	2.25	57.2	
B	---	---	1
C	1.75	44.5	
D	1.75	44.5	
E	1.313	33.35	
F	.875	22.23	

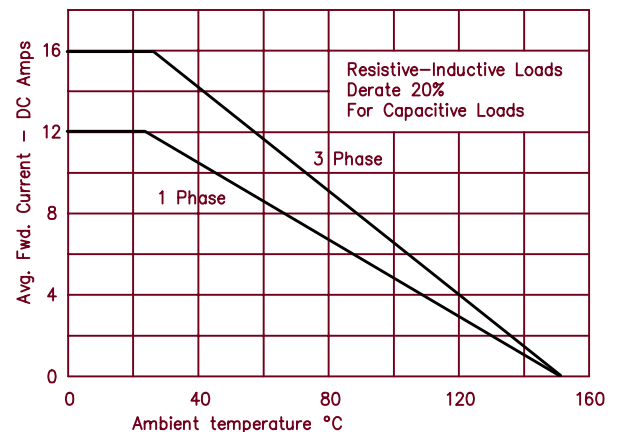
Note 1: Mounting hole .172 (4.37 mm) Dia.

Microsemi Catalog Number	Max. PRV Rating	
	Single Phase	Three Phase
EH*2B1	EH*2Z1	200V
EH*4B1	EH*4Z1	400V
EH*6B1	EH*6Z1	600V
EH*8B1	EH*8Z1	800V
EH*10B1	EH*10Z1	1000V
EH*12B1	EH*12Z1	1200V
EH*14B1	EH*14Z1	1400V
EH*16B1	EH*16Z1	1600V

*Add S for Stud Terminal or F for Faston Terminal

- High current encapsulated assembly
- Single and three phase bridges available
- Full Wave Bridge rating of 1600V PRV
- Completely sealed, compact, corrosion and moisture resistant

Electrical Characteristics	
Circuit:	Single phase and three phase full wave bridge
AC Input:	Up to 1600 PRV
DC Output:	1 Phase Up to 12 Amps DC (25°C Amb.-Chassis mounted) 3 Phase Up to 16 Amps DC (25°C Amb.-Chassis mounted)
Surge Current	250 Amps peak for one cycle
Loads:	Resistive, Inductive, Capacitive, Continuous
Duty Cycle:	Continuous
Cooling:	Convection
Design Features:	The diodes are housed in an epoxy sealed case Convenient faston or stud terminals as specified.
Mounting Torque:	30 inch pounds maximum—base and terminal



2-15-02 Rev. 2

[Home](#) > [Products](#) > [Power Conditioning](#) > [Center Tap](#) > EHF2Y1

EHF2Y1 (#6492)

Center Tap

Division [Colorado](#) **Datasheet** [COG-2.PDF](#)

Mil-Spec (none)

Shipping (none) **Qual Data** (none)

Config

- Common Cathode Center Tap

Package

SEE_FACTORY(STD)

Description

Single and three phase bridges rated 12A (single phase) and 16A (three phase). All rated from 200V-1600V.

Absolute Maximum Ratings	Symbol	Max	Unit
Output Current	IO/ Leg	200	A

* No Drawing Available

[Home](#) > [Products](#) > [Power Conditioning](#) > [Center Tap](#) > EHF6Y1

EHF6Y1 (#6498)

Center Tap

Division [Colorado](#) **Datasheet** [COG-2.PDF](#)

Mil-Spec (none)

Shipping (none) **Qual Data** (none)

Config

- Common Cathode Center Tap

Package

SEE_FACTORY(STD)

Description

Single and three phase bridges rated 12A (single phase) and 16A (three phase). All rated from 200V-1600V.

Absolute Maximum Ratings	Symbol	Max	Unit
Output Current	IO/ Leg	600	A

* No Drawing Available

[Home](#) > [Products](#) > [Power Conditioning](#) > [Center Tap](#) > EHF4Y1

EHF4Y1 (#6495)

Center Tap

Division [Colorado](#) **Datasheet** [COG-2.PDF](#)

Mil-Spec (none)

Shipping (none) **Qual Data** (none)

Config

- Common Cathode Center Tap

Package

SEE_FACTORY(STD)

Description

Single and three phase bridges rated 12A (single phase) and 16A (three phase). All rated from 200V-1600V.

Absolute Maximum Ratings	Symbol	Max	Unit
Output Current	IO/ Leg	400	A

* No Drawing Available

[Home](#) > [Products](#) > [Power Conditioning](#) > [Center Tap](#) > EHF8Y1

EHF8Y1 (#6501)

Center Tap

Division [Colorado](#) **Datasheet** [COG-2.PDF](#)**Mil-Spec** (none)**Shipping** (none) **Qual Data** (none)**Config**

- Common Cathode Center Tap

Package

SEE_FACTORY(STD)

Description

Single and three phase bridges rated 12A (single phase) and 16A (three phase). All rated from 200V-1600V.

Absolute Maximum Ratings	Symbol	Max	Unit
Output Current	IO/ Leg	800	A

* No Drawing Available

[Home](#) > [Products](#) > [Power Conditioning](#) > [Center Tap](#) > EHF16Y1

EHF16Y1 (#6489)

Center Tap

Division [Colorado](#) **Datasheet** [COG-2.PDF](#)

Mil-Spec (none)

Shipping (none) **Qual Data** (none)

Config

- Common Cathode Center Tap

Package

SEE_FACTORY(STD)

Description

Single and three phase bridges rated 12A (single phase) and 16A (three phase). All rated from 200V-1600V.

Absolute Maximum Ratings	Symbol	Max	Unit
Output Current	IO/ Leg	1600	A

* No Drawing Available

[Home](#) > [Products](#) > [Power Conditioning](#) > [Center Tap](#) > EHF12Y1

EHF12Y1 (#6486)

Center Tap

Division [Colorado](#) **Datasheet** [COG-2.PDF](#)

Mil-Spec (none)

Shipping (none) **Qual Data** (none)

Config

- Common Cathode Center Tap

Package

SEE_FACTORY(STD)

Description

Single and three phase bridges rated 12A (single phase) and 16A (three phase). All rated from 200V-1600V.

Absolute Maximum Ratings	Symbol	Max	Unit
Output Current	IO/ Leg	1200	A

* No Drawing Available

[Home](#) > [Products](#) > [Power Conditioning](#) > [Center Tap](#) > EHF10Y1

EHF10Y1 (#6483)

Center Tap

Division [Colorado](#) **Datasheet** [COG-2.PDF](#)

Mil-Spec (none)

Shipping (none) **Qual Data** (none)

Config

- Common Cathode Center Tap

Package

SEE_FACTORY(STD)

Description

Single and three phase bridges rated 12A (single phase) and 16A (three phase). All rated from 200V-1600V.

Absolute Maximum Ratings	Symbol	Max	Unit
Output Current	IO/ Leg	1000	A

* No Drawing Available