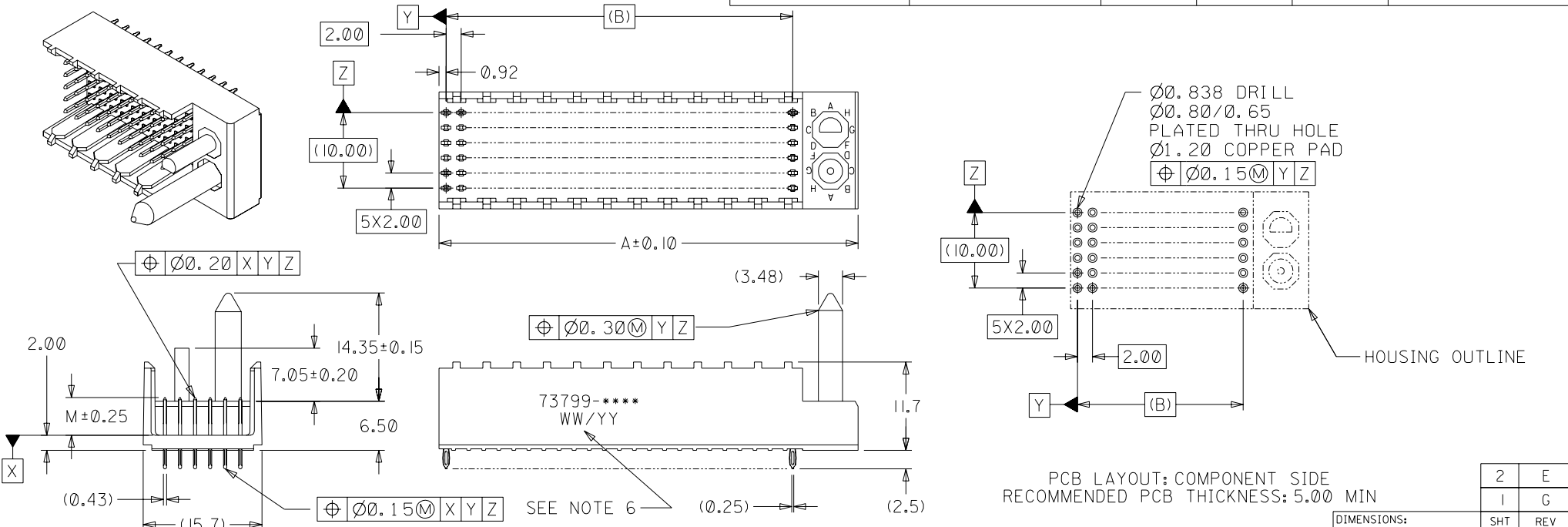


NOTES:

1. MATERIALS: HOUSING-LIQUID CRYSTAL POLYMER (LCP), GLASS FILLED UL94 V-0, COLOR: BLACK, TERMINAL-PHOSPHOR BRONZE.
2. FINISHES: SELECTIVE GOLD (Au) IN CONTACT AREA, 0.00076mm MIN. THICKNESS, NICKEL (Ni) AND GOLD FLASH OVERALL; SELECTIVE GOLD IN CONTACT AREA, 0.00076mm MIN. THICKNESS, SELECTIVE TIN/LEAD (Sn/Pb) IN TAIL AREA, NICKEL OVERALL.
3. THIS PART CONFORMS TO MOLEX PRODUCT SPECIFICATION PS-73780-999.
4. CONSULT FACTORY FOR MIXED CONTACT MATING LENGTHS.
5. PACKAGE PER PK-70873-0818.
6. PARTS MARKED WITH PART NUMBER AND DATE CODE, ON EITHER SIDE, APPROXIMATELY WHERE SHOWN.

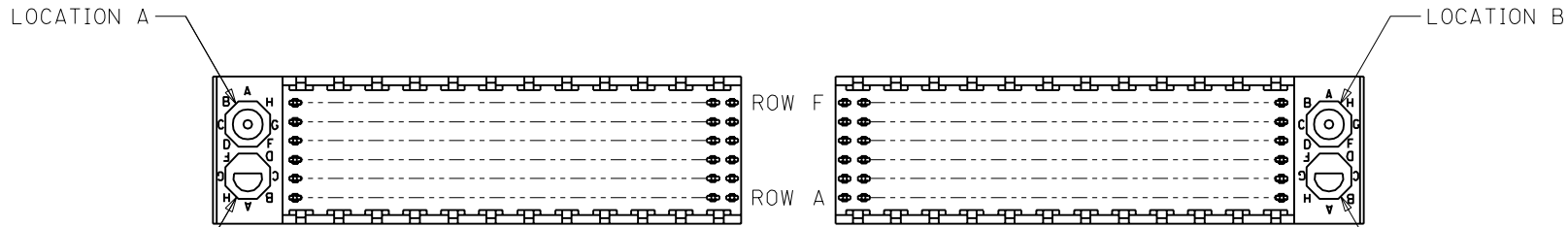
MATERIAL NUMBER	NUMBER OF SIGNAL CONTACTS	DIM "A"	DIM "B"	DIM "M"	PLATING
73799-00**	72	31.6	22.00	5.00	GOLD/GOLD FLASH
73799-02**	72	31.6	22.00	6.00	GOLD/GOLD FLASH
73799-10**	144	55.6	46.00	5.00	GOLD/GOLD FLASH
73799-12**	144	55.6	46.00	6.00	GOLD/GOLD FLASH
73799-20**	72	31.6	22.00	5.00	GOLD/TIN-LEAD
73799-22**	72	31.6	22.00	6.00	GOLD/TIN-LEAD
73799-30**	144	55.6	46.00	5.00	GOLD/TIN-LEAD
73799-32**	144	55.6	46.00	6.00	GOLD/TIN-LEAD



PCB LAYOUT: COMPONENT SIDE
RECOMMENDED PCB THICKNESS: 5.00 MIN

2	E
1	G

REVISED EC NO: UCP2003-2260 DRWN: THOMAS 03/04/25 CHK: BINGHAM 03/04/25 APPR: REED 03/04/25	DESCRIPTION MAJOR CRITICAL	GENERAL TOLERANCES: (UNLESS SPECIFIED)		SCALE 2 : 1	DESIGN UNITS <input checked="" type="checkbox"/> mm <input type="checkbox"/> INCH	THIRD ANGLE PROJECTION	DIMENSIONS:		SHT	REV
		mm	INCH	DRAWN BY & DATE JBINGHAM 97/05/16	TITLE: SALES ASSY, HDM SINGLE-END MIDPLANE, POLAR/GUIDE OPTION, (DUCKPIN)		mm	INCH	mm	ONLY
G	REV	4 PLACES	±0.	±.	CHECKED BY & DATE SREED 97/05/16	APPROVED BY & DATE CBIXLER 97/05/16		MOLEX INCORPORATED		
		3 PLACES	±0.	±.	CAD FILENAME S73799X1.DGN		MATERIAL NO. SEE CHART	DRAWING NO. SD-73799-001	SHEET NO. 1 OF 2	
		2 PLACES	±0.05	±.	DRAFT WHERE APPLICABLE MUST REMAIN WITHIN DIMENSIONS		THIS DRAWING CONTAINS INFORMATION THAT IS PROPRIETARY TO MOLEX INCORPORATED AND SHOULD NOT BE USED WITHOUT WRITTEN PERMISSION.			
		1 PLACE	±0.10	±.	ANGULAR: ± 1/2°		SIZE B			



REF. MATERIAL NUMBER 73799-1009
 GUIDE PIN IS IN LOCATION A
 POLARIZING KEY IS IN LOCATION B, POSITION E

REF. MATERIAL NUMBER 73799-1008
 GUIDE PIN IS IN LOCATION B
 POLARIZING KEY IS IN LOCATION A, POSITION E

MATERIAL NUMBER ASSIGNMENT

73799- * * * *

- 0 = 72-CIRCUIT, GOLD/GOLD FLASH
- 1 = 144-CIRCUIT, GOLD/GOLD FLASH
- 2 = 72-CIRCUIT, GOLD/TIN-LEAD
- 3 = 144-CIRCUIT, GOLD/TIN-LEAD

- 0 = 5.00 MATING LENGTH
- 1 = RESERVED
- 2 = 6.00 MATING LENGTH

NUMBER	GUIDE POST LOCATION	POLAR KEY POSITION
00	B	
01	A	A
02	B	
03	A	B
04	B	
05	A	C
06	B	
07	A	D
08	B	
09	A	E
10	B	
11	A	F
12	B	
13	A	G
14	B	
15	A	H
16	B	
17	A	N/A
18	N/A	

SEE SHEET 1
 EC No. UDT2000-0312
 DRWN: BINGHAM 99/09/28
 CHK: REED 99/09/28
 APPR: BIXLER 99/09/28

DESCRIPTION
 MAJOR
 CRITICAL

REV
 F

QUALITY SYMBOLS

GENERAL TOLERANCES: (UNLESS SPECIFIED)

	mm	INCH
4 PLACES	±0.	±.
3 PLACES	±0.	±.
2 PLACES	±0.N/A	±.
1 PLACE	±0.N/A	±.

ANGULAR: ± 1/2°

DRAFT WHERE APPLICABLE MUST REMAIN WITHIN DIMENSIONS

SCALE
 2 : 1

DESIGN UNITS
 mm INCH

DRAWN BY & DATE
 JBINGHAM 97/05/16

CHECKED BY & DATE
 SREED 97/05/16

APPROVED BY & DATE
 CBIXLER 97/05/16

CAD FILENAME
 S73799X2.DGN

DIMENSIONS:
 mm INCH mm ONLY

SHT REV
 REVISE ON CAD ONLY

THIRD ANGLE PROJECTION

TITLE: SALES ASSY, HDM SINGLE-END MIDPLANE, POLAR/GUIDE OPTION, (DUCKPIN)

MOLEX INCORPORATED

MATERIAL NO. SEE CHART
 DRAWING NO. SD-73799-001
 SHEET NO. 2

THIS DRAWING CONTAINS INFORMATION THAT IS PROPRIETARY TO MOLEX INCORPORATED AND SHOULD NOT BE USED WITHOUT WRITTEN PERMISSION.

SIZE B