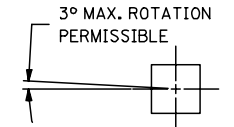
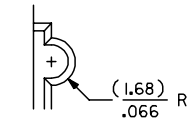


CKT. SIZE	PART NUMBER	ENG. NUMBER SDA-70204-	DIM. "A"		DIM. "B"		DIM. "C"	
			MM	IN.	MM	IN.	MM	IN.
			08	25-02-1008	0323	7,62	.300	17,78
10	25-02-1010	0324	10,16	.400	20,32	.800	22,86	.900
12	25-02-1012	0325	12,70	.500	22,86	.900	25,40	1.000
14	25-02-1014	0326	15,24	.600	25,40	1.000	32,51	1.100
16	25-02-1016	0327	17,78	.700	27,94	1.100	30,48	1.200
18	25-02-1018	0328	20,32	.800	30,48	1.200	33,02	1.300
20	25-02-1020	0329	22,86	.900	33,02	1.300	35,56	1.400
22	25-02-1022	0330	25,40	1.000	35,56	1.400	38,10	1.500
24	25-02-1024	0331	27,94	1.100	38,10	1.500	40,64	1.600
26	25-02-1026	0332	30,48	1.200	40,64	1.600	43,10	1.700
28	25-02-1028	0333	33,02	1.300	43,10	1.700	45,72	1.800
30	25-02-1030	0334	35,56	1.400	45,72	1.800	48,26	1.900
32	25-02-1032	0335	38,10	1.500	48,26	1.900	50,80	2.000
34	25-02-1034	0336	40,64	1.600	50,80	2.000	53,34	2.100
36	25-02-1036	0337	43,10	1.700	53,34	2.100	55,88	2.200
38	25-02-1038	0338	45,72	1.800	55,88	2.200	58,42	2.300
40	25-02-1040	0339	48,26	1.900	58,42	2.300	60,96	2.400

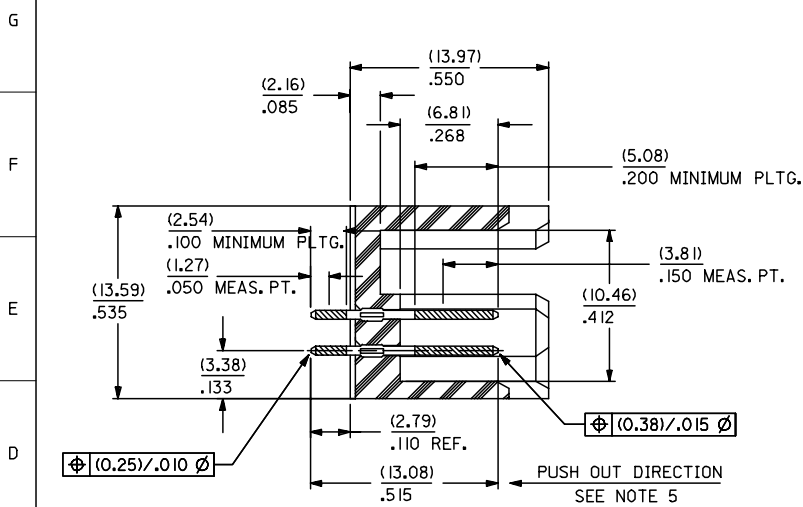
CKT. SIZE	PART NUMBER	ENG. NUMBER SDA-70204-	DIM. "A"		DIM. "B"		DIM. "C"	
			MM	IN.	MM	IN.	MM	IN.
			42	25-02-1042	0340	50,80	2.000	60,96
44	25-02-1044	0341	53,34	2.100	63,50	2.500	66,04	2.600
46	25-02-1046	0342	55,88	2.200	66,04	2.600	68,58	2.700
48	25-02-1048	0343	58,42	2.300	68,58	2.700	71,12	2.800
50	25-02-1050	0344	60,96	2.400	71,12	2.800	73,66	2.900
52	25-02-1052	0345	63,50	2.500	73,66	2.900	76,20	3.000
54	25-02-1054	0346	66,04	2.600	76,20	3.000	78,74	3.100
56	25-02-1056	0347	68,58	2.700	78,74	3.100	81,28	3.200
58	25-02-1058	0348	71,12	2.800	81,28	3.200	83,82	3.300
60	25-02-1060	0349	73,66	2.900	83,82	3.300	86,36	3.400
62	25-02-1062	0350	76,20	3.000	86,36	3.400	88,90	3.500
64	25-02-1064	0351	78,74	3.100	88,90	3.500	91,44	3.600
66	25-02-1066	0352	81,28	3.200	91,44	3.600	93,98	3.700
68	25-02-1068	0353	83,82	3.300	93,98	3.700	96,52	3.800
70	25-02-1070	0354	86,36	3.400	96,52	3.800	99,06	3.900
72	25-02-1072	0355	88,90	3.500	99,06	3.900	101,60	4.000



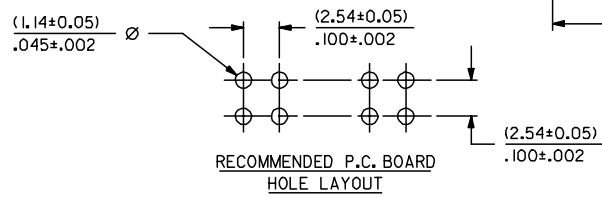
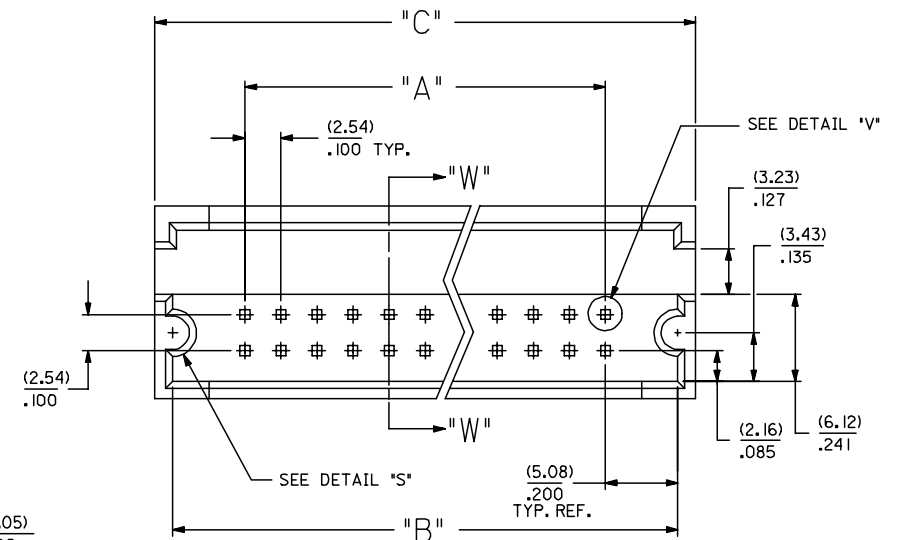
DETAIL "V"
SCALE = 20:1



DETAIL "S"



SECTION W-W



REMOVE 0356-0384 FC NO: UCP2007-0113 DRAWN: JORGAN 2006/08/07 CHK'D: MS BARRA 2006/08/16 APPR: SMILLER 2006/08/18 DESCRIPTION	QUALITY SYMBOLS	GENERAL TOLERANCES (UNLESS SPECIFIED)	DIMENSION STYLE	SCALE	DESIGN UNITS	THIRD ANGLE PROJECTION																				
	$\nabla=0$ $\nabla=0$	<table border="1"> <tr><th colspan="2">mm</th><th colspan="2">INCH</th></tr> <tr><td>4 PLACES</td><td>± .010</td><td>± .005</td><td>± .001</td></tr> <tr><td>3 PLACES</td><td>± 0.25</td><td>± .010</td><td>± .005</td></tr> <tr><td>2 PLACES</td><td>± .010</td><td>± .010</td><td>± .005</td></tr> <tr><td>1 PLACE</td><td>± .010</td><td>± .010</td><td>± .005</td></tr> </table>	mm		INCH		4 PLACES	± .010	± .005	± .001	3 PLACES	± 0.25	± .010	± .005	2 PLACES	± .010	± .010	± .005	1 PLACE	± .010	± .010	± .005	MM/IN	4:1	INCH	
	mm		INCH																							
	4 PLACES	± .010	± .005	± .001																						
3 PLACES	± 0.25	± .010	± .005																							
2 PLACES	± .010	± .010	± .005																							
1 PLACE	± .010	± .010	± .005																							
DRAFT WHERE APPLICABLE MUST REMAIN WITHIN DIMENSIONS	<table border="1"> <tr><td>DRAWN BY</td><td>DATE</td></tr> <tr><td>JAS</td><td>1986/05/20</td></tr> <tr><td>CHECKED BY</td><td>DATE</td></tr> <tr><td>EIK</td><td>1986/05/20</td></tr> <tr><td>APPROVED BY</td><td>DATE</td></tr> <tr><td>WAZ</td><td>1986/05/20</td></tr> </table>	DRAWN BY	DATE	JAS	1986/05/20	CHECKED BY	DATE	EIK	1986/05/20	APPROVED BY	DATE	WAZ	1986/05/20	TITLE SHROUDED HEADER DUAL ROW W/PCB SLOTS & GUIDE EARS .100 GRID .025 SQ PIN	MOLEX INCORPORATED	SHEET NO. 1 OF 1										
DRAWN BY	DATE																									
JAS	1986/05/20																									
CHECKED BY	DATE																									
EIK	1986/05/20																									
APPROVED BY	DATE																									
WAZ	1986/05/20																									
THIS DRAWING CONTAINS INFORMATION THAT IS PROPRIETARY TO MOLEX INCORPORATED AND SHOULD NOT BE USED WITHOUT WRITTEN PERMISSION	SEE TABLE	SDA-70204-0321-0384	MOLEX INCORPORATED	SHEET NO. 1 OF 1																						

NOTES:

- 1) WAFER MATERIAL: GLASS FILLED NYLON COLOR, BLACK.
- 2) PIN MATERIAL: PHOSPHOR BRONZE ALLOY
- 3) PIN PLATING:
TIP: .000030 MINIMUM GOLD IN SELECTED AREA
TAIL: .000075 MINIMUM TIN IN SELECTED AREA
OVER .000050 NICKEL OVER-ALL.
- *THE PRIMARY SHIPPING CARTON WILL BE LABELED 'COMPLIANT TO RoHS DIRECTIVE 2002/95/EC AND ELV ANNEX II OF DIRECTIVE 2000/53/EC'. CARTONS WITHOUT THIS LABEL MAY CONTAIN PRODUCT WITH LEAD.
- 4) PINS MUST MEET SOLDERABILITY SPEC. NO. 152.
- 5) PIN PUSH-OUT FORCE (1.81 KG.)/4 LBS MINIMUM
- 6) REFER TO P.S. NO. 70204.
- 7) STANDARD PACKAGING PER: PK-70873-0070.