

Power Splitter



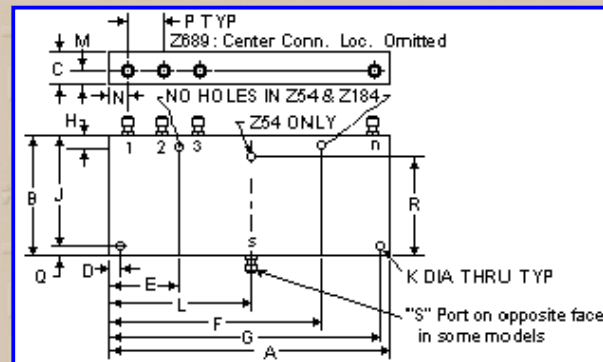
Notes:

- General Quality Control Procedures and Environmental Specifications are given in [Mini-Circuits Guarantees Quality](#). Hi-Rel, MIL description are given in [Hi-Rel and MIL](#)
- Prices and Specifications subjects to change without notice.

ZB8PD-ED10257/1 8 Way-0°

Frequency MHz	Isolation, dB			Insertion Loss, dB Above 9.0dB			Phase Unbalance Degrees			Amplitude Unbalance, dB			VSWR (:1)	
	L	M	U	L	M	U	L	M	U	L	M	U	S	OUT
$f_L - f_U$	Typ.	Min.	Typ.	Typ.	Max.	Typ.	Typ.	Max.	Typ.	Max.	Max.	Max.	Typ.	Max.
900-2150			23										1.40	1.25

L=low range(f_L to $10f_L$) M=mid range($10f_L$ to $f_U/2$) U=upper range($f_U/2$ to f_U)



Case Style - Z41 (inch,mm) weight: 800 grams.

A	B	C	D	E	F	G	H	J
7.06	3.13	.88	.250	1.750	5.310	6.810	.250	2.875
179.324	79.502	22.352	6.350	44.450	134.874	172.974	6.350	73.025
K	L	M	N	P	Q	R	S	T
.144	3.53	.44	.415	.89				
3.658	89.662	11.176	10.541	22.606				

Tolerance: .x ± .1 .xx ± .03 .xxx ± .015 inch.

Material and Finish:

Case material: aluminum alloy. Finish: grey paint or yellow iridite.

Connectors:

Connectors: Please specify; Type N or SMA.

FREQ (MHz)	Insertion Loss						Amplitude Unbalance (dB)	Isolation				Phase Unbalance (Degrees)	FREQ (MHz)	VSWR S	VSWR 1	VSWR 8
	(dB) S-1	(dB) S-2	(dB) S-3	(dB) S-4	(dB) S-6	(dB) S-8		(dB) 1-2	(dB) 1-3	(dB) 3-4	(dB) 6-7					
810.00	9.48	9.72	9.72	9.41	9.67	9.46	0.320	24.52	23.81	24.18	24.67	2.78	810.00	1.79	1.21	1.35
820.00	9.42	9.68	9.67	9.35	9.61	9.40	0.340	24.76	24.16	24.39	24.89	2.72	820.00	1.72	1.22	1.34
830.00	9.39	9.67	9.67	9.33	9.61	9.37	0.360	24.98	24.57	24.57	25.10	2.78	830.00	1.66	1.23	1.33
840.00	9.40	9.71	9.69	9.35	9.64	9.38	0.380	25.22	25.04	24.75	25.30	2.89	840.00	1.59	1.23	1.32
850.00	9.44	9.74	9.74	9.39	9.68	9.42	0.380	25.45	25.52	24.94	25.49	3.09	850.00	1.53	1.24	1.31
860.00	9.45	9.75	9.75	9.40	9.68	9.43	0.380	25.65	26.02	25.09	25.64	3.22	860.00	1.47	1.25	1.30
870.00	9.40	9.68	9.68	9.35	9.62	9.38	0.350	25.77	26.49	25.19	25.74	3.33	870.00	1.41	1.25	1.30
880.00	9.34	9.59	9.60	9.28	9.53	9.33	0.340	25.86	26.94	25.22	25.80	3.32	880.00	1.35	1.26	1.29
890.00	9.29	9.53	9.53	9.23	9.46	9.27	0.320	25.89	27.37	25.23	25.86	3.23	890.00	1.29	1.27	1.29
900.00	9.25	9.50	9.50	9.21	9.43	9.24	0.320	25.92	27.83	25.22	25.90	3.13	900.00	1.24	1.27	1.28
1000.00	9.27	9.52	9.53	9.24	9.45	9.26	0.330	26.44	30.84	25.70	26.37	3.45	1000.00	1.19	1.34	1.30
1100.00	9.48	9.72	9.73	9.45	9.65	9.47	0.320	25.90	27.92	25.78	26.19	3.80	1100.00	1.50	1.34	1.34
1200.00	9.55	9.76	9.78	9.51	9.71	9.54	0.290	23.79	25.62	24.16	24.43	4.13	1200.00	1.57	1.26	1.31
1300.00	9.48	9.68	9.69	9.44	9.62	9.46	0.260	22.37	24.70	22.82	23.04	4.58	1300.00	1.46	1.18	1.23
1400.00	9.52	9.66	9.67	9.47	9.61	9.49	0.210	22.12	24.46	22.50	22.75	5.04	1400.00	1.34	1.14	1.14
1500.00	9.50	9.59	9.59	9.47	9.53	9.47	0.140	22.79	24.27	23.08	23.25	5.46	1500.00	1.28	1.14	1.10
1550.00	9.57	9.63	9.65	9.53	9.58	9.53	0.120	23.52	23.98	23.72	23.91	5.83	1550.00	1.28	1.14	1.11
1600.00	9.56	9.58	9.60	9.53	9.53	9.51	0.090	24.74	23.72	24.92	25.02	5.79	1600.00	1.30	1.12	1.14
1650.00	9.60	9.58	9.61	9.59	9.54	9.55	0.070	26.61	23.36	26.80	26.96	5.97	1650.00	1.32	1.09	1.19
1700.00	9.66	9.60	9.62	9.65	9.56	9.61	0.100	29.44	23.21	29.92	30.09	5.98	1700.00	1.32	1.05	1.23
1750.00	9.64	9.56	9.60	9.66	9.55	9.61	0.120	32.09	23.26	33.70	34.35	5.95	1750.00	1.32	1.02	1.26
1800.00	9.70	9.56	9.60	9.73	9.55	9.67	0.190	30.68	23.59	32.58	33.53	6.05	1800.00	1.35	1.05	1.27
1850.00	9.75	9.62	9.66	9.79	9.61	9.72	0.200	27.54	24.37	28.69	29.44	5.99	1850.00	1.39	1.09	1.25
1900.00	9.77	9.58	9.62	9.82	9.56	9.73	0.270	25.44	25.62	26.19	26.78	5.95	1900.00	1.41	1.12	1.19
1950.00	9.78	9.59	9.64	9.82	9.57	9.71	0.270	24.50	27.51	25.07	25.58	5.92	1950.00	1.39	1.12	1.12
2000.00	9.80	9.59	9.63	9.85	9.55	9.72	0.320	24.82	29.96	25.29	25.70	5.75	2000.00	1.30	1.10	1.11
2050.00	9.73	9.52	9.56	9.77	9.47	9.64	0.320	26.59	31.49	27.05	27.47	5.36	2050.00	1.18	1.06	1.18
2100.00	9.78	9.59	9.63	9.82	9.53	9.69	0.310	30.99	29.85	31.86	32.16	5.34	2100.00	1.12	1.01	1.29
2150.00	9.81	9.61	9.66	9.87	9.58	9.73	0.330	35.68	26.98	40.09	39.33	4.74	2150.00	1.23	1.06	1.39
2175.00	9.83	9.70	9.75	9.91	9.68	9.76	0.270	31.75	25.77	33.69	33.60	4.83	2175.00	1.30	1.09	1.43
2200.00	9.83	9.70	9.76	9.93	9.68	9.77	0.290	27.91	24.67	28.95	29.12	5.25	2200.00	1.37	1.12	1.46
2225.00	9.85	9.66	9.73	9.97	9.66	9.79	0.380	24.99	23.74	25.76	26.02	5.13	2225.00	1.41	1.15	1.48
2250.00	9.94	9.81	9.89	10.10	9.84	9.90	0.360	22.91	23.08	23.53	23.74	4.86	2250.00	1.44	1.17	1.50
2275.00	9.82	9.76	9.85	10.02	9.80	9.78	0.310	21.21	22.45	21.75	21.99	5.39	2275.00	1.43	1.19	1.50
2300.00	9.82	9.70	9.81	10.03	9.76	9.78	0.400	19.79	21.89	20.27	20.56	6.01	2300.00	1.40	1.19	1.50
2325.00	9.90	9.76	9.86	10.14	9.81	9.85	0.460	18.73	21.47	19.14	19.42	5.91	2325.00	1.35	1.20	1.49
2350.00	9.85	9.76	9.86	10.09	9.81	9.79	0.410	17.90	21.10	18.24	18.55	6.00	2350.00	1.30	1.19	1.48
2375.00	9.80	9.71	9.82	10.03	9.76	9.72	0.400	17.06	20.58	17.32	17.70	6.68	2375.00	1.28	1.18	1.48
2400.00	9.94	9.81	9.92	10.16	9.84	9.85	0.440	16.42	20.12	16.62	16.95	7.03	2400.00	1.33	1.17	1.47
2425.00	9.97	9.82	9.92	10.19	9.83	9.86	0.480	15.78	19.57	15.93	16.36	7.13	2425.00	1.44	1.16	1.47
2450.00	10.08	9.93	10.03	10.30	9.94	9.97	0.500	15.14	18.96	15.27	15.70	7.30	2450.00	1.60	1.14	1.46



Distribution Centers NORTH AMERICA

800-654-7949 • 417-335-5935 • Fax 417-335-5945 • EUROPE • 44-1252-832600 • Fax 44-1252-837010

ISO 9001 CERTIFIED

INTERNET <http://www.minicircuits.com>

P.O.Box 350166, Brooklyn, New York 11235-0003 (718) 934-4500 Fax (718) 332-4661

i2 Technologies US, Inc.

HTML Pages converted to PDF Document

This document contains component information from the manufacturer's website which are not available in a revision controlled document from the manufacturer. To facilitate the addition of these parts into the Electronics Database, we are converting the HTML pages related to that part, from the manufacturer's website into Adobe PDF format. The contents of this document is based on the information provided on the manufacturer's website, therefore the information may have been changed by the manufacturer since this was created.

