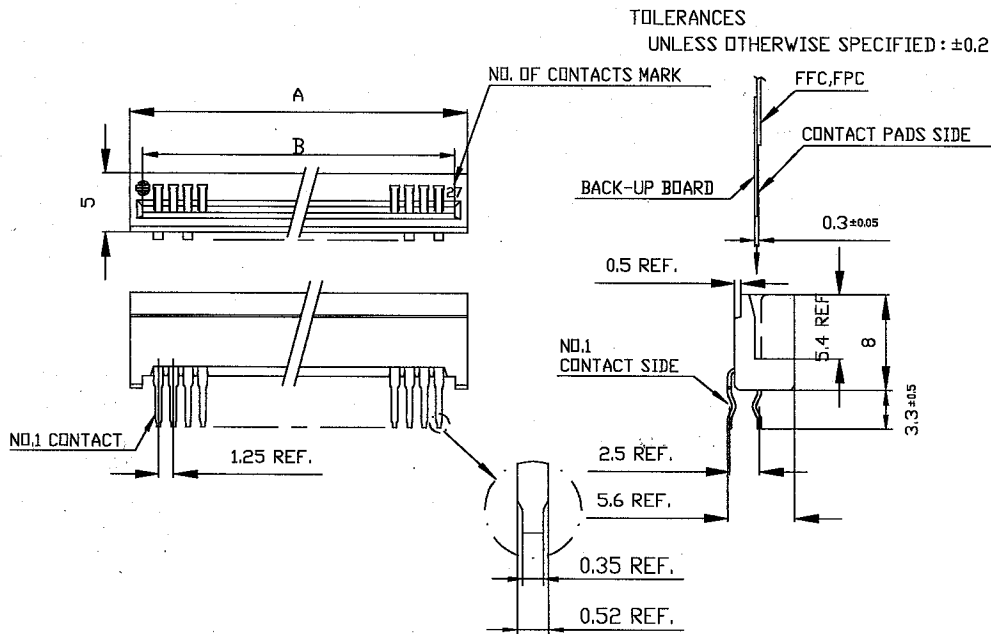


REVISIONS				
REV	DESCRIPTION	ECN	BY	DATE
A	Changed Form and assigned revision newly	J05-0641	H.T	10/6/05
B	Changed of Cat. No. for RoHS	J05-0642	H.T	10/6/05



**MATERIAL**

INSULATOR : PBT RESIN GLASS REINFORCED (UL94V-0)

COLOR : BLACK

CONTACT : PHOSPHOR BRONZE (TIN PLATED)

FINISH : TREATMENT PREVENTING FROM FLUX PENETRATION

NO. OF CONTACTS	CAT. NO.	DIMENSIONS		21	HLEM 21 S-1RFLF	29.80	27.66
		A ±0.3	B ±0.1				
3	HLEM 3 S-1RFLF	7.30	5.16	22	HLEM 22 S-1RFLF	31.05	28.91
4	HLEM 4 S-1RFLF	8.55	6.41	23	HLEM 23 S-1RFLF	32.30	30.16
5	HLEM 5 S-1RFLF	9.80	7.66	24	HLEM 24 S-1RFLF	33.55	31.41
6	HLEM 6 S-1RFLF	11.05	8.91	25	HLEM 25 S-1RFLF	34.80	32.66
7	HLEM 7 S-1RFLF	12.30	10.16	26	HLEM 26 S-1RFLF	36.05	33.91
8	HLEM 8 S-1RFLF	13.55	11.41	27	HLEM 27 S-1RFLF	37.30	35.16
9	HLEM 9 S-1RFLF	14.80	12.66	28	HLEM 28 S-1RFLF	38.55	36.41
10	HLEM 10 S-1RFLF	16.05	13.91	29	HLEM 29 S-1RFLF	39.80	37.66
11	HLEM 11 S-1RFLF	17.30	15.16	30	HLEM 30 S-1RFLF	41.05	38.91
12	HLEM 12 S-1RFLF	18.55	16.41	31	HLEM 31 S-1RFLF	42.30	40.16
13	HLEM 13 S-1RFLF	19.80	17.66	32	HLEM 32 S-1RFLF	43.55	41.41
14	HLEM 14 S-1RFLF	21.05	18.91	33	HLEM 33 S-1RFLF	44.80	42.66
15	HLEM 15 S-1RFLF	22.30	20.16	34	HLEM 34 S-1RFLF	46.05	43.91
16	HLEM 16 S-1RFLF	23.55	21.41	35	HLEM 35 S-1RFLF	47.30	45.16
17	HLEM 17 S-1RFLF	24.80	22.66	36	HLEM 36 S-1RFLF	48.55	46.41
18	HLEM 18 S-1RFLF	26.05	23.91	37	HLEM 37 S-1RFLF	49.80	47.66
19	HLEM 19 S-1RFLF	27.30	25.16	38	HLEM 38 S-1RFLF	51.05	48.91
20	HLEM 20 S-1RFLF	28.55	26.41	39	HLEM 39 S-1RFLF	52.30	50.16
				40	HLEM 40 S-1RFLF	53.55	51.41

**Notes :**

- 1) The housing will withstand exposure to 260 degree peak temperature for 10 seconds in a wave solder application with a 1.57mm minimum thick circuit board.
- 2) This product meets European Union Directives & other country regulations as described in GS-22-008.
- 3) Part numbers ending in "LF" means for note 2 lead free identification. HLEMxxR/S-1RFLF is equivalent to previous P/N HLEMxxR/S-1RF.

CAT. NO. : HLEM\_ \_S-1RFLF (See Note 3)

SHEET INDEX	ISSUE	B										<b>A</b> <b>FCI</b>
	SH NO.	1										
TOLERANCES UNLESS OTHERWISE SPECIFIED		DR M. Iitsuka		DATE	CUSTOMER COPY		TITLE 1.25mm SPACING CONNECTOR FOR FPC / FPC					
LINEAR		ENGR S. Ito			THIRD ANGLE PROJ							
ANGLES		APPD K. Asal		2/13/97	UNIT MM INCH		PRODUCT FAMILY 58KF			CODE JP		
DO NOT SCALE PRINT		THIS INFORMATION IS CONFIDENTIAL AND IS DISCLOSED TO YOU ON CONDITION THAT NO FURTHER DISCLOSURE IS MADE BY YOU TO OTHER THAN FCI PERSONNEL WITHOUT WRITTEN AUTHORIZATION FROM FCI JAPAN KK.					SCALE	SIZE A	DWG. NO. JSA94074	REV B	SHEET 1 OF 1	

SC-HLEM01 JSA28789

PDM: Rev:B

STATUS: Released

Printed: Oct 14, 2005