

0.4375" Pitch, Series #8

PHYSICAL PROPERTIES

HOUSING MATERIAL: Polypropylene
FLAMMABILITY: UL94V-0
COLOR: Black

TERMINAL

TERMINALS: Bright acid tin over copper alloy
SCREWS: #8-32 steel, zinc plating with clear chromate coating. Wire clamping screws standard. Binding head screw with undercut optional.

MECHANICAL

PITCH (TERMINAL SPACING): .375"
RECOMMENDED PCB HOLE DIA.: 1.8mm (.073")

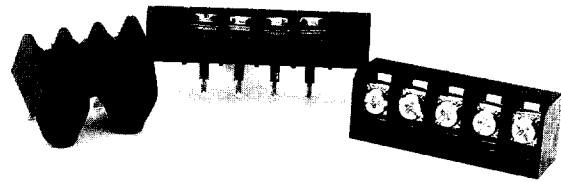
ELECTRICAL PROPERTIES

MAXIMUM CURRENT: 30A
OPERATING VOLTAGE: 300V
WIRE RANGE: 10-18 AWG (UL)
10-22 AWG (CSA)

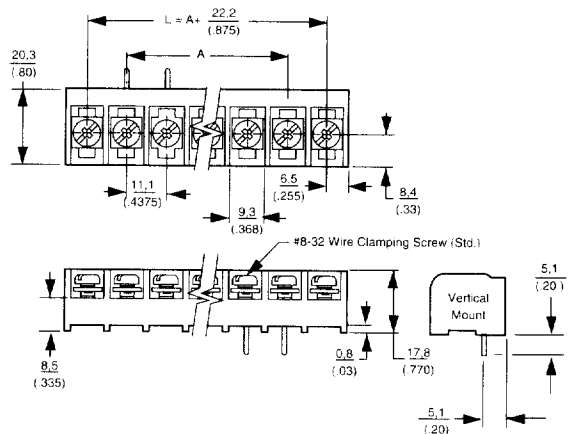
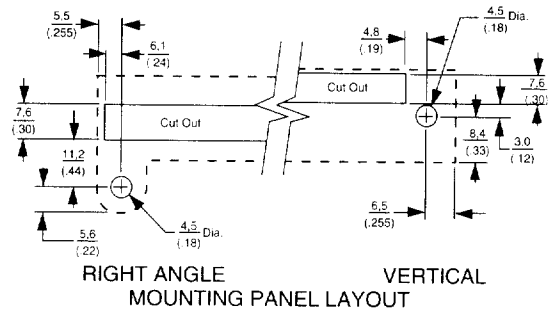
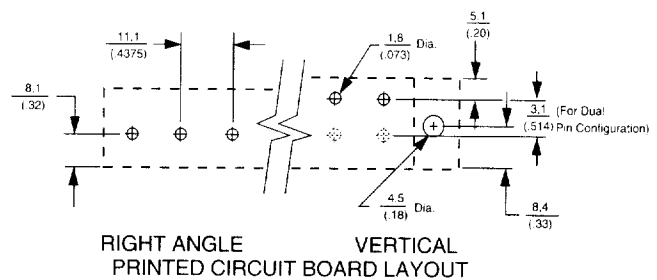
ENVIRONMENTAL PROPERTIES

OPERATING TEMPERATURE RANGE: 105 °C max.

Note: Before ordering, see Cross Reference in Section 15 for equivalent Tyco Electronics Part Number.



#8 SERIES TRI-BARRIERS



TERMINALS	A	TERMINALS	A
2	(0.4375) 11,1	15	(6.12) 155,6
3	(0.87) 22,2	16	(6.56) 166,7
4	(1.31) 33,3	17	(7.00) 177,8
5	(1.75) 44,5	18	(7.44) 188,9
6	(2.19) 55,6	19	(7.87) 200,0
7	(2.62) 66,7	20	(8.31) 211,1
8	(3.06) 77,8	21	(8.75) 222,2
9	(3.50) 88,9	22	(9.19) 233,4
10	(3.93) 100,0	23	(9.62) 244,5
11	(4.37) 111,1	24	(10.06) 255,6
12	(4.81) 122,2	25	(10.50) 266,7
13	(5.25) 133,3	26	(10.94) 277,8
14	(5.69) 144,5		

For complete product information, order Catalog 1308389



Terminal Blocks

0.4375" Pitch, Series #8

ORDERING INFORMATION

8 PCV-04-004

A **B** **C** **D**

A Screw Size Spacing

8 = #8-32 on .4375" Centers

C No. of Circuits (Not positions)

02 through 26

B Terminal Style

DBL = Double Printed Circuit Pin

PCR = Printed Circuit, Right Angle

PCV = Printed Circuit Pin, Vertical

QCR = Quick Connect Tab, Right Angle

QCV = Quick Connect Tab, Vertical

STR = Solder Turret, Right Angle

STV = Solder Turret, Vertical

TBV = Non Feed Thru

WWR = Solderless Wire Wrap, Right Angle

WWV = Solderless Wire Wrap, Vertical

D Modifiers

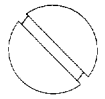
Use table below.

-001=-000 except binding head screw

-002=-000 except brass screw

-003=-000 except brass binding head screw

Note: If modifier is -000 it may be omitted.
(8PCV-06)



Phil-slot Head

Slotted Head

Note: Before ordering, see Cross Reference in Section 15 for equivalent Tyco Electronics Part Number.

Terminal Style	Modifier Slotted Head	Modifier Phil-slot Head	Screw Style	Mounting Construction
DBL	000	006	Wire Clamp	No Mounting
	001	007	Binding Head	
PCV	000	006	Wire Clamp	No Mounting
	001	007	Binding Head	
	004	008	Wire Clamp	
	005	009	Binding Head	
PCR	000	006	Wire Clamp	No Mounting
	001	007	Binding Head	
	004	008	Wire Clamp	
	005	009	Binding Head	
QCV STV WWV	000	006	Wire Clamp	
	004	008	Wire Clamp	
QCR STR WWR	000	006	Wire Clamp	
	004	008	Wire Clamp	
TBV	000	006	Wire Clamp	

For complete product information, order Catalog 1308389

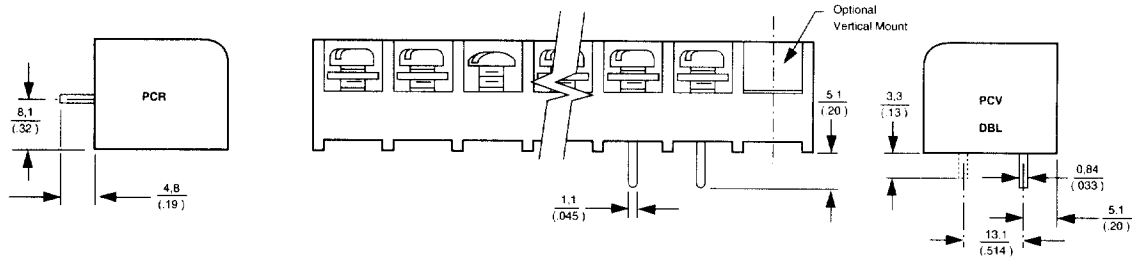


LR30811

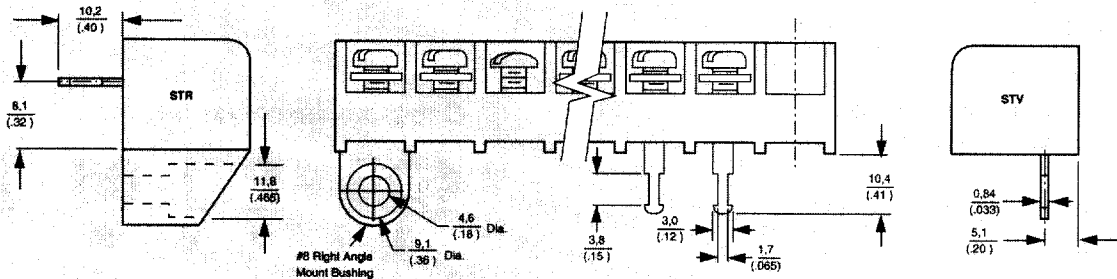
E54800

0.4375" Pitch, Series #8

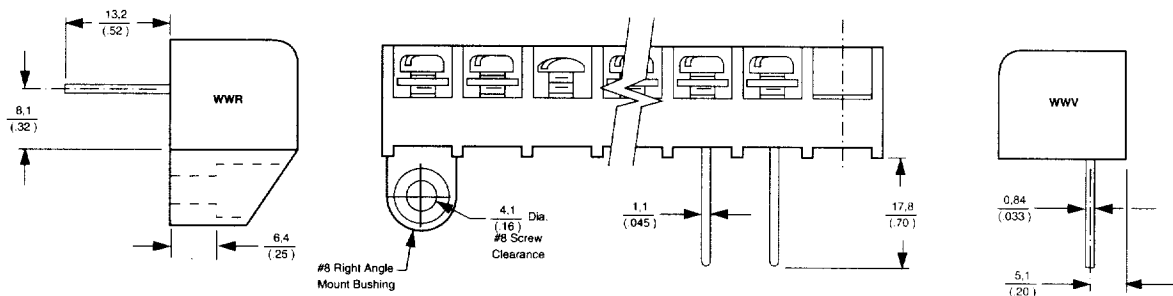
Printed Circuit Pin



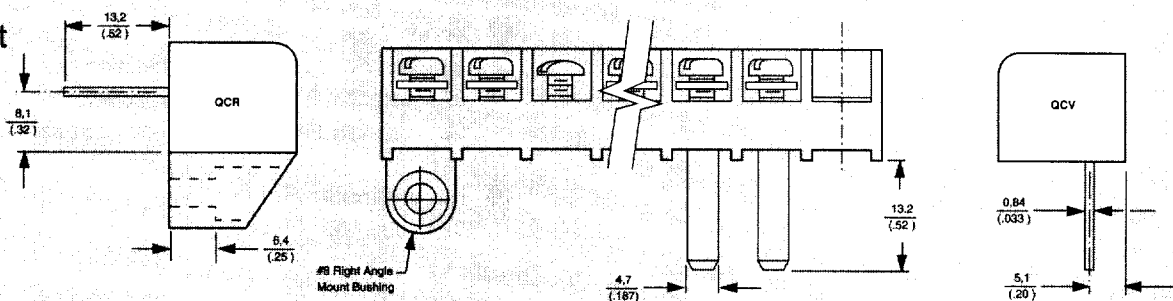
Solder Turret



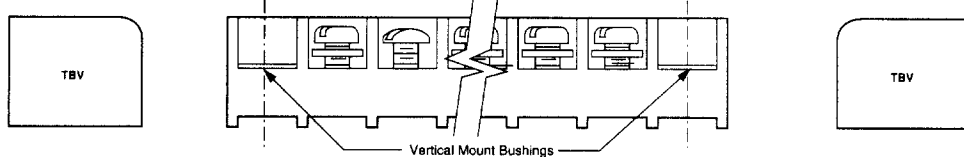
Wire Wrap



Quick Connect



Non-Feed Thru



For complete product information, order Catalog 1308389

