

# PLASTIC MOLDED, LOW PROFILE LOW FREQUENCY SURFACE MOUNT CRYSTALS ABS25 and ABS20G

## FEATURES:

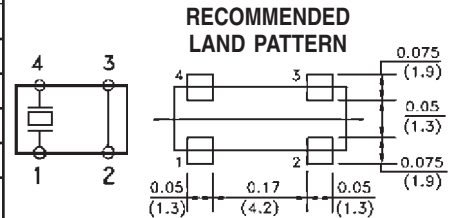
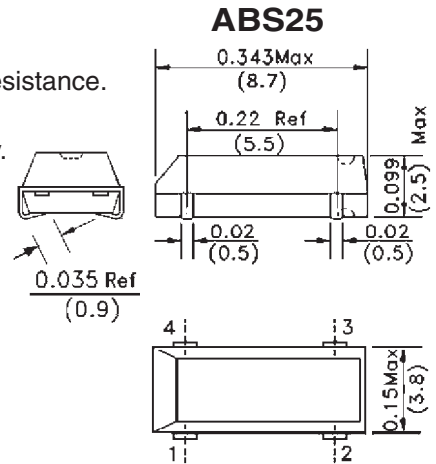
- Perfect for SMT applications with limited space.
- Formed leads, low profile (ABS20G).
- 2.0 mm max. suitable for PCMCIA application.
- Excellent heat resistance.
- Plastic molded.
- Watch frequency.

## APPLICATIONS:

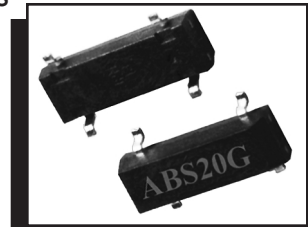
- Clock source for communication or A/V equipment, measuring instruments.
- Real Time Clock.

## STANDARD SPECIFICATIONS

PARAMETERS	ABS25	ABS20G
Standard Frequency Range	32.768 kHz (Standard) 30 kHz - 165 kHz	32.768 kHz
Operating Temperature	-40°C to +85°C	
Storage Temperature	-55°C to +125°C	
Frequency Tolerance @ 25°C	±30 ppm max. (See Options)	±20 ppm max. (See Options)
Frequency Stability over Temp.	-0.034 ± 0.006 ppm / (25-T) <sup>2</sup> (See NOTE)	
Turnover Temperature	25°C ± 5°C	
Equivalent Series Resistance (ESR)	30 kΩ max. to 50 kΩ max.	55 kΩ max.
Shunt Capacitance C <sub>0</sub>	0.8 pF to 1.7 pF typ.	1.35 pF typ.
Motional Capacitance C <sub>1</sub>	0.003 pF typical	
Load Capacitance C <sub>L</sub>	12.5 pF (See Options)	
Capacitance Ratio C <sub>0</sub> /C <sub>1</sub>	425 to 800 typical	450 typical
Drive Level	1 μW max.	
Aging (Per Year)	±5 ppm max.	±3 ppm max.
Insulation Resistance	500 MΩ min. at 100 Vdc ±15 V	



## PIN CONNECTIONS



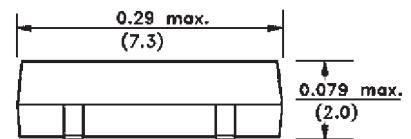
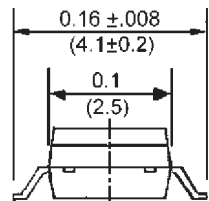
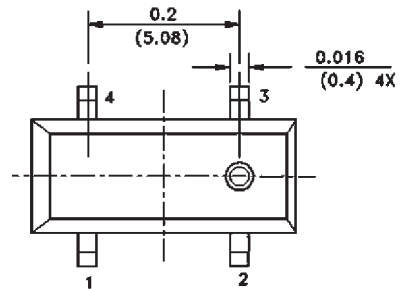
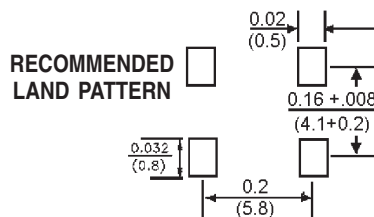
## ABS20G

Environmental, and mechanical specifications on page 68, Group 2.

Marking, see page 76.

Tape and Reel, see pages 74-75 (3,000 pcs/reel).

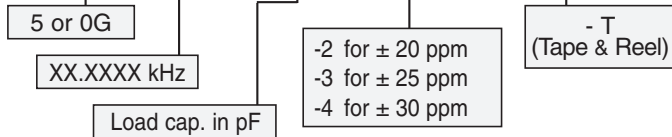
NOTE: Example; Stability at -20°C is:  
-0.034 x (25-[-20])<sup>2</sup> = -68.8 ppm.)



Dimensions: Inches (mm)

## ORDERING OPTIONS

ABS2XX - Frequency - CL - Tolerance - Packaging



NOTE: Left blank if standard • All specifications and markings subject to change without notice

29 Journey • Aliso Viejo, CA 92656 • USA  
(949) 448-7070 • FAX: (949) 448-8484

E-MAIL: [abinfo@abracon.com](mailto:abinfo@abracon.com) • INTERNET ADDRESS: [www.abracon.com](http://www.abracon.com)

ABRACON IS  
ISO 9001 / QS 9000  
CERTIFIED