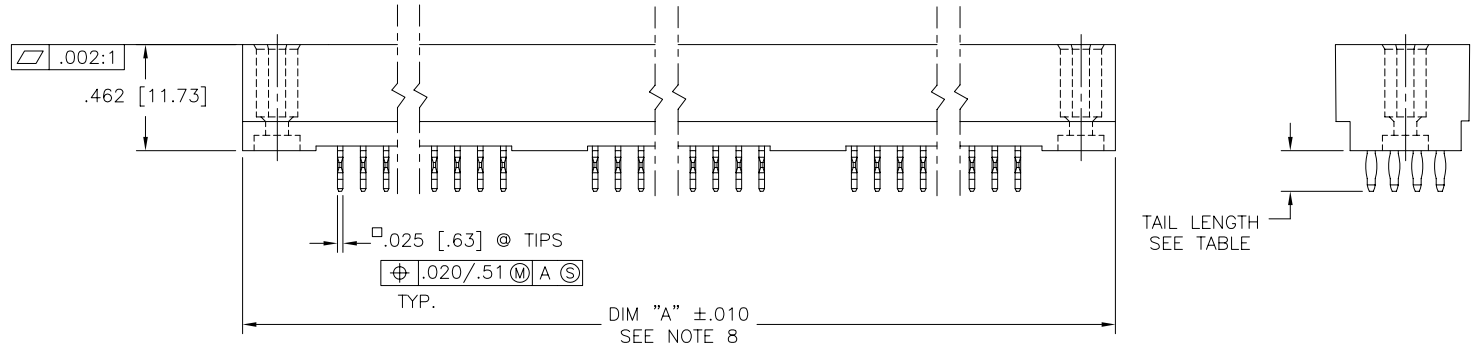
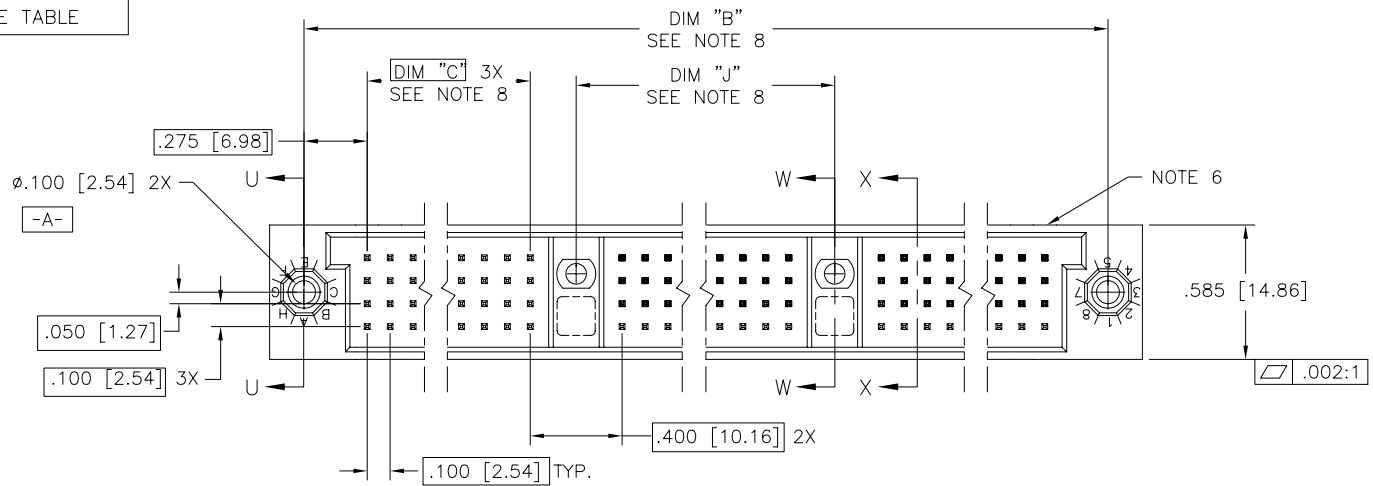


PRODUCT NUMBER  
SEE TABLE



Copyright FCI

mat'l. code SEE NOTE 3		surface ISO 1302 ✓		tolerance ISO 406 ISO 1101		projection INCH/MM		product family HPC	
ltr		ecn no		dr		date		title	
D	v40285	GIP	1/20/94	tolerances unless otherwise specified		.xx±.01/.3		4 ROW VERTICAL HEADER	
E	v40941	PDP	6/1/94	angles	linear	.xxx±.005/.13		W/PRESS-FIT PINS, 2 G.P.	
F	v82253	HTB	12/29/98	0°±2'		.xxxx±.0020/.051		scale 1:1	
G	v00271	JWS	1/31/00	dr	D.SHEAFFER	3/14/91		dwg no	
H	v05-0739	DAI	09/14/05	enr	S.CLARK	3/14/91		sheet 1 of 7 size	
J	v05-1039	DAI	11/11/05	chr	S.CLARK	3/14/91		50011 A3	
K	M06-0283	MHT	7/27/06	appd	S.CLARK	3/14/91		type Product Customer Drawing	
sheet	revision	K	K	K	K	K	K		
index	sheet	1	2	3	4	5	6	7	

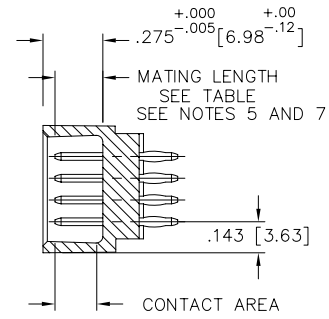
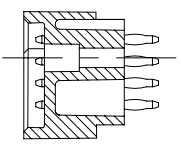
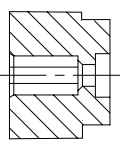
PRODUCT NUMBER  
SEE TABLE

NOTES:

- PRODUCT NUMBERING CODE:  
50011 - X YYY Z LF  
LEAD FREE (OPTIONAL)  
TAIL LENGTH (SEE TABLE)  
NO. OF POSITIONS (SEE NOTE 2)  
PLATING (SEE TABLE)  
BASE NUMBER

- PRODUCT NUMBERING CODE FOR  
SELECT LOAD PART NUMBERS:  
50011 - XXYYY LF  
LEAD FREE (OPTIONAL)  
SEQUENCE NUMBER  
ALWAYS 'XX'  
BASE NUMBER

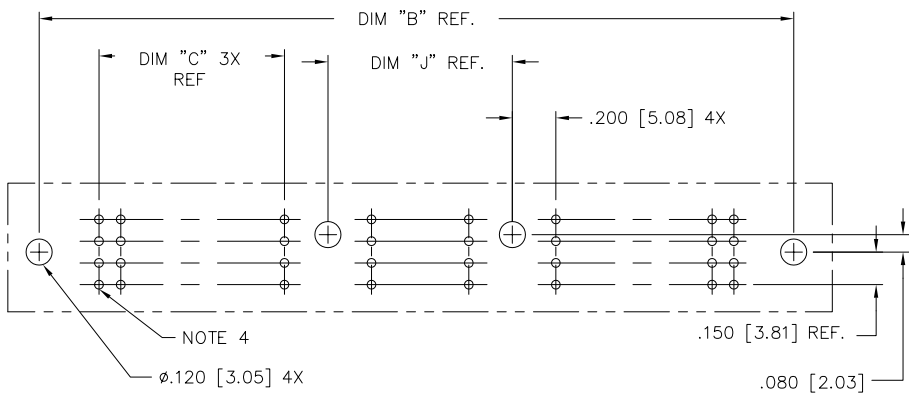
- THIS PRODUCT IS CONFIGURED IN SIZES OF 30 thru 150 COLUMNS IN INCREMENTS OF THREE.  
i.e.: 30,33,36,39,.....147,150.
- HOUSING MATERIAL: GLASS AND MINERAL FILLED HIGH TEMP. THERMOPLASTIC. FLAME RETARDANT PER UL94V-0. COLOR: BLACK.  
PIN MATERIAL: PHOS BRONZE
- $\phi.0453/1.151$  DRILLED HOLE PLATED WITH  $.0003/.007$  MIN. SnPb OVER  $.001/.03$  to  $.003/.08$  Cu. PLATING TO ACHIEVE A  $\phi.040 \pm .003/1.02 \pm .08$  HOLE.
- TO ASSURE PROPER INSTALLATION: TOOLING, AS SPECIFIED IN INSTRUCTION MANUAL 155915-001 MUST BE USED. PIN MATING LENGTH WILL BE  $\pm .002/.05$  AFTER INSTALLATION.
- COMPANY NAME, PART NUMBER AND LOT CODE TO APPEAR ON THIS SURFACE PER BUS-12-108.
- REFERENCE 50809 FOR F.M.L.B. AVAILABLE OPTIONS AND WORKSHEET.
- LENGTH FORMULAS:  
DIM "A" =  $.100/2.54 \times \text{NO. OF COLUMNS} + 1.35/34.3$   
DIM "B" =  $.100/2.54 \times \text{NO. OF COLUMNS} + 1.050/26.67$   
DIM "C" =  $.100/2.54 \times \text{NO. OF COLUMNS} \text{ DIVIDED BY } 3 - .100/2.54$   
DIM "J" =  $.100/2.54 \times \text{NO. OF COLUMNS} \text{ DIVIDED BY } 3 + .300/7.62$
- THIS PRODUCT (WITH "LF" SUFFIX) MEETS EUROPEAN UNION DIRECTIVES AND OTHER COUNTRY REGULATIONS AS DESCRIBED IN GS-22-008.
- THIS HOUSING WILL WITHSTAND EXPOSURE TO 260° C PEAK TEMPERATURE FOR 10-30 SECONDS IN A CONVECTION, INFRA-RED OR VAPOR PHASE REFLOW OVEN.



SECTION U-U

SECTION W-W

SECTION X-X



RECOMMENDED PCB LAYOUT  
(ALL HOLES LOCATED ON  $.100/2.54$  GRID UNLESS OTHERWISE SPECIFIED)

mat'l. code SEE NOTE 3		surface ISO 1302 <input checked="" type="checkbox"/>	tolerance ISO 406 ISO 1101	projection 	product family HPC
ltr	ecn	no	dr	date	tolerances unless otherwise specified
K					angles linear .xx±.01/.3 .xxx±.005/.13 .xxxx±.0020/.051
					0°±2'
			dr	D.SHEAFFER	3/14/91
			enr	S.CLARK	3/14/91
			chr	S.CLARK	3/14/91
			appd	S.CLARK	3/14/91
sheet index	revision sheet				



title  
4 ROW VERTICAL HEADER  
W/PRESS-FIT PINS, 2 G.P.

scale 1:1

dwg no 50011 sheet 2 of 7 size A3

type Product Customer Drawing

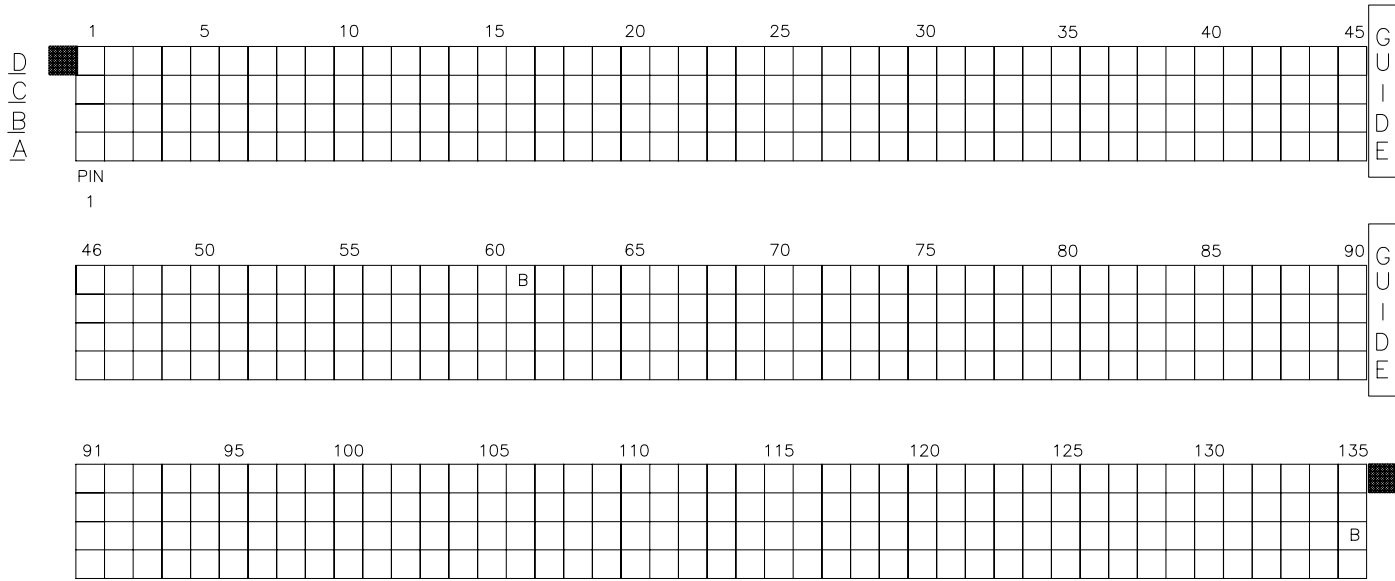


Copyright FCJ



PRODUCT NUMBER  
SEE TABLE

SELECT LOAD (50011-XX007 AND 50011-XX007LF ONLY)



- SPECIAL NOTES FOR -XX007 AND -XX007LF ONLY:
- ALL POSITIONS ARE LOADED WITH "A", EXCEPT AS SHOWN.
  - COLUMN 1 ROW A IS DESIGNATED AS SIGNAL PIN 1, AS VIEWED FROM THE MATING FACE.
  - SIGNAL DATA FOR 50011-XX007 AND 50011-XX007LF:  
SIZE 4 X 135  
TOTAL NO. OF POSITIONS - 540  
NO. OF POSITIONS LOADED - 540

ITEM KEY	QTY.	MATING LENGTH	TAIL LENGTH
A	538	.200/5.08	.177/4.50
B	2	.240/6.10	.177/4.50

mat'l. code SEE NOTE 3		surface ISO 1302	tolerance ISO 406 ISO 1101	projection 	product family HPC
ltr	ecn no	dr	date	tolerances unless otherwise specified	title
K				angles linear 0°±2'	INCH/MM 4 ROW VERTICAL HEADER W/PRESS-FIT PINS, 2 G.P.
				.XX±.01/.3 .XXX±.005/.13 .XXXX±.0020/.051	scale 1:1
		dr	D.SHEAFFER	3/14/91	dwg no
		enr	S.CLARK	3/14/91	sheet 4 of 7 size
		chr	S.CLARK	3/14/91	50011 A3
		appd	S.CLARK	3/14/91	type Product Customer Drawing
sheet index	revision sheet				



Copyright FCI

PRODUCT NUMBER  
SEE TABLE

SELECT LOAD (50011-XX008 AND 50011-XX008LF ONLY)

	1	5	10	15	20	25	30	35	40	45	GUIDE	
D									X	X		X
C									X	X		X
B									X	X		X
A									X	X	X	

PIN 1

	46	50	55	60	65	70	75	80	85	GUIDE	
D	X	X	X	X					X		X
C	X	X	X	X					X		X
B	X	X	X	X					X		X
A	X	X	X	X					X	X	

	91	95	100	105	110	115	120	125	130	135	GUIDE
D	X	X	X	X							
C	X	X	X	X							
B	X	X	X	X							
A	X	X	X	X							

SPECIAL NOTE FOR -XX008 AND -XX008LF ONLY:

- ALL POSITIONS ARE LOADED WITH "A", EXCEPT AS SHOWN.
- COLUMN 1 ROW A IS DESIGNATED AS SIGNAL PIN 1, AS VIEWED FROM THE MATING FACE.
- SIGNAL DATA FOR 50011-XX008 AND 50011-XX008LF:  
SIZE 4 X 135  
TOTAL NO. OF POSITIONS - 540  
NO. OF POSITIONS LOADED - 412

ITEM KEY	QTY.	MATING LENGTH	TAIL LENGTH
A	410	.200/5.08	.177/4.50
B	2	.240/6.10	.177/4.50
X	128	N/A	N/A

mat'l. code SEE NOTE 3		surface ISO 1302	tolerance ISO 406 ISO 1101	projection 	product family HPC
ltr	ecm	no	dr	date	tolerances unless otherwise specified
K					linear .XX±.01/.3 .XXX±.005/.13 .XXXX±.0020/.051
					angles 0'±2'
			dr	D.SHEAFFER	3/14/91
			enr	S.CLARK	3/14/91
			chr	S.CLARK	3/14/91
			appd	S.CLARK	3/14/91
sheet index	revision sheet				



title	4 ROW VERTICAL HEADER W/PRESS-FIT PINS, 2 G.P.
scale	1:1
dwg no	50011
sheet	5 of 7
size	A3
type	Product Customer Drawing



Copyright FCJ



PRODUCT NUMBER	NUMBER OF POSTIONS SEE NOTE 2	MATING LENGTH	TAIL LENGTH ±.015/0.38	TERMINAL PLATING
50011-1YYYA	YYY	.220[5.59]	.177/4.50	30μ"/76μ GOLD
50011-1YYYC	YYY		.533/13.54	30μ"/76μ GOLD
50011-1YYYD	YYY		.733/18.62	30μ"/76μ GOLD
50011-1YYYG	YYY		.250/6.35	30μ"/76μ GOLD
50011-1YYYL	YYY		.188/4.78	30μ"/76μ GOLD
50011-1YYYP	YYY		.470/11.94	30μ"/76μ GOLD
50011-3YYYA	YYY		.177/4.50	50μ"/1.27μ GOLD
50011-3YYYC	YYY		.533/13.54	50μ"/1.27μ GOLD
50011-3YYYD	YYY		.733/18.62	50μ"/1.27μ GOLD
50011-3YYYG	YYY		.250/6.35	50μ"/1.27μ GOLD
50011-3YYYL	YYY		.188/4.78	50μ"/1.27μ GOLD
50011-3YYYP	YYY		.470/11.94	50μ"/1.27μ GOLD
50011-5YYYA	YYY		.177/4.50	30μ"/76μ GXT
50011-5YYYALF	YYY		.177/4.50	30μ"/76μ GXT
50011-5YYYC	YYY		.533/13.54	30μ"/76μ GXT
50011-5YYYCLF	YYY		.533/13.54	30μ"/76μ GXT
50011-5YYYD	YYY		.733/18.62	30μ"/76μ GXT
50011-5YYYDLF	YYY		.733/18.62	30μ"/76μ GXT
50011-5YYYG	YYY		.250/6.35	30μ"/76μ GXT
50011-5YYYGLF	YYY		.250/6.35	30μ"/76μ GXT
50011-5YYYL	YYY		.188/4.78	30μ"/76μ GXT
50011-5YYYLLF	YYY		.188/4.78	30μ"/76μ GXT
50011-5YYYPLF	YYY	.220[5.59]	.470/11.94	30μ"/76μ GXT
50011-XX005	540	SEE SHEET 3	SEE SHEET 3	30μ"/76μ GXT
50011-XX005LF	540	SEE SHEET 3	SEE SHEET 3	30μ"/76μ GXT
50011-XX007	540	SEE SHEET 4	SEE SHEET 4	30μ"/76μ GXT
50011-XX007LF	540	SEE SHEET 4	SEE SHEET 4	30μ"/76μ GXT
50011-XX008	540	SEE SHEET 5	SEE SHEET 5	30μ"/76μ GXT
50011-XX008LF	540	SEE SHEET 5	SEE SHEET 5	30μ"/76μ GXT
50011-XX011	540	SEE SHEET 6	SEE SHEET 6	30μ"/76μ GXT
50011-XX011LF	540	SEE SHEET 6	SEE SHEET 6	30μ"/76μ GXT



FCJconnect.com

Copyright FCJ

mat'l. code SEE NOTE 3		surface ISO 1302 ✓	tolerance ISO 406 ISO 1101	projection 	product family HPC
ltr	ecn	no	dr	date	tolerances unless otherwise specified
K					angles linear .xx±.01/.3 .xxx±.005/.13 .xxxx±.0020/.051
					0'±2'
					dr D.SHEAFFER 3/14/91
					enr S.CLARK 3/14/91
					chr S.CLARK 3/14/91
					appd S.CLARK 3/14/91
sheet index	revision sheet				



title  
4 ROW VERTICAL HEADER  
W/PRESS-FIT PINS, 2 G.P.

scale 1:1

dwg no 50011 sheet 7 of 7 size A3

type Product Customer Drawing

form: A3