

**SMU-PN Series**  
**MU CONNECTOR PLUG**  
- for MU-APC -

**TECHNICAL SPECIFICATIONS**

**Seiko Instruments Inc.**

Network Components Business

8, Nakase 1-Chome

Mihama-ku, Chiba-shi, Chiba-ken

261-8507 JAPAN

Telephone: +81-43-211-1211

Facsimile: +81-43-211-8039

SMU-PN Series MU CONNECTOR PLUG - for MU-APC -  
TECHNICAL SPECIFICATIONS

Document Number [ACD-25BC-01](#)

[ACD-25BC-01](#)      [June 2002](#)

Copyright 2002 by **Seiko Instruments Inc.**  
All right reserved.

The information contained herein shall not be reproduced or disclosed to any third party without the express written consent of **SII**.

The Specifications contained herein are subject to change without notice.

**SII** is a trademark of Seiko Instruments Inc.

Please address any questions, comments, and suggestions to:

**Seiko Instruments USA Inc.**

Electronics Components Division  
2990 West Lomita Boulevard  
Torrance, CA 90505, U.S.A.  
Phone:           +1-310-517-7780  
Facsimile:      +1-310-517-7792

**Seiko Instruments (H.K.) Ltd.**

Sales Department  
4th & 5th Floor, Wyler Center 2  
200 Tai Lin Pai Road, Kwai Chung  
N.T., Kowloon, Hong Kong  
Phone:           +852-2421-8611  
Facsimile:      +852-2480-5479

**Seiko Instruments Singapore pte. Ltd.**

Component Sales Department  
2, Marsiling Lane,  
Singapore, 739144, Singapore  
Phone:           +65-269-1370  
Facsimile:      +65-269-9729

**Seiko Instruments GmbH**

OFC Division  
Siemensstraße 9b  
D-63263 Neu-Isenburg, Germany  
Phone:           +49-6102-297-0  
Facsimile:      +49-6102-297-211

**Seiko Instruments Taiwan Inc.**

Sales Department  
4F, No.40, Sec. 2, Min Chuan E. Rd.,  
Taipei 104, Taiwan, R.O.C.  
Phone:           +886-2-2563-5001  
Facsimile:      +886-2-2521-9519

## TABLE OF CONTENTS

Section	Page
1 PROVISION	1
1.1 Application limit	1
2 PARTS NUMBER	1
3 GENERAL SPECIFICATIONS	2
3.1 Parts and Materials	2
3.2 Physical Dimensions	2
3.3 General Tolerances	2
4 PACKING	2

### Table

Table 1	Parts Number	1
Table 2-1	Parts and Materials	2
Table 2-2	Parts and Materials of Main Body	2
Table 3	General Tolerance	2

### Figure

Figure 1.1	SMU-PN Connector Plug for $\varnothing$ 0.9 mm cord	3
Figure 1.2	SMU-PN Connector Plug for $\varnothing$ 2.0 mm cord	4
Figure 2	Main Body	5
Figure 3 to 7	Parts Dimensions	6



1 PROVISION

1.1 Application Limit

These specifications apply to the SMU-PN MU connector plug for MU-APC supplied by **SII**.

2 PARTS NUMBER

Parts number of the connector plug is shown in Table 1.

Table 1 Parts Number

MODEL Number		TYPE Number										
<b>SMU-PN</b>		<b>8</b>	<b>1</b>	<b>1</b>	<b>2</b>	<b>5</b>	<b>1</b>	<b>E</b>	<b>3</b>	<b>0</b>	<b>0</b>	
Hood Color												
8	Green										(Required) 00	
Hood I.D.											Package	
1	ø 0.9 mm										3 Bulk package	
2	ø 2.0 mm										Cap	
Ferrule I.D.											E Green frame cap	
125	ø 0.125 mm										Marking of Grip	
12F	ø 0.1255 mm										1 SII / SMU-P	
126	ø 0.126 mm											

### 3 GENERAL SPECIFICATIONS

#### 3.1 Parts and Materials

Parts and the materials are shown in Table 2-1 and 2-2.

Table 2-1 Parts and Materials

No.	Part Name	Qty	Material	Notes
#1	Main body	1	See Table 2-2	Sub-assembled
#2	Grip	1	PBT GF	Green, UL94V-0
#3	Crimping ring	1	Aluminum alloy + Sumitube	for $\varnothing$ 2.0 mm, Sumitube: Black
#4-1	Hood	1	TPE	for $\varnothing$ 0.9 mm, Green, UL94V-0
#4-2	Hood	1	TPE	for $\varnothing$ 2.0 mm, Green, UL94V-0
#11	Cap	1	PP	Green

Table 2-2 Parts and Materials of Main Body

No.	Part Name	Qty	Material	Notes
#5	Ferrule	1	Zirconia ceramics	-
#6	Flange	1	Brass	Nickel plating
#7	Tube	1	TPFE	Clear
#8	Plug frame	1	PBT GF	White, UL94V-0
#9	Spring	1	Stainless steel	-
#10	Stop ring	1	Brass	Brass: Nickel plating

#### 3.2 Physical Dimensions

Figure 1.1 and 1.2 show the assembled state of SMU-PN.

Figure 2 shows the Main body dimensions.

Figure 3 to 7 show the parts dimensions.

#### 3.3 General Tolerances

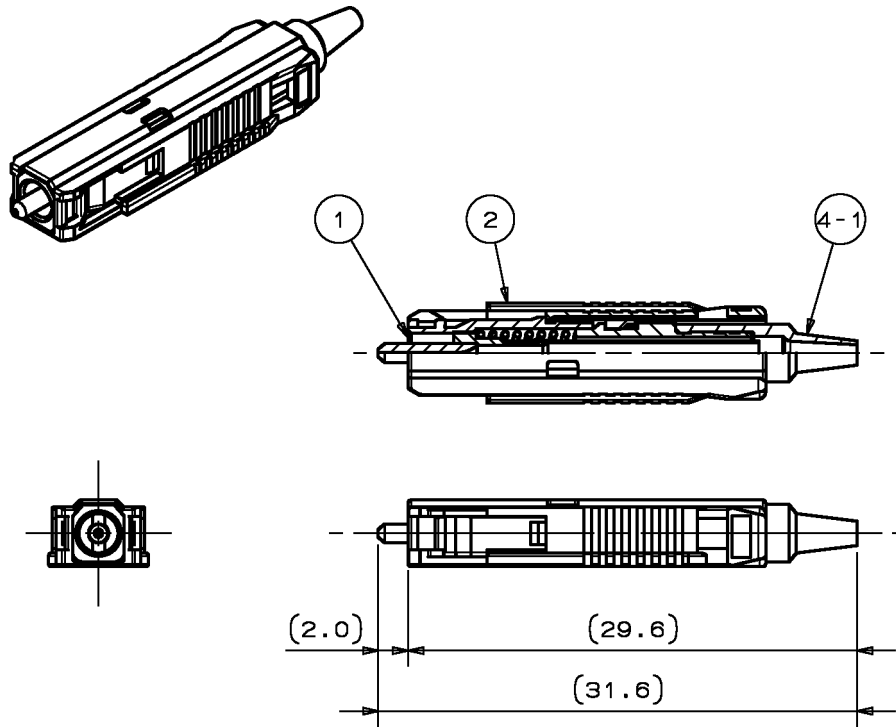
Permissible deviation in dimensions without tolerance indication is in accordance with JIS B 0405 class m, as shown in Table 3.

Table 3 General tolerance (JIS B 0405 class m)

Basic size step [mm]		Permissible deviation [mm]
Over	Under	
0.5	3	$\pm 0.1$
3	6	$\pm 0.1$
6	30	$\pm 0.2$
30	120	$\pm 0.3$

### 4 PACKING

The product is packed to prevent damage during shipment.

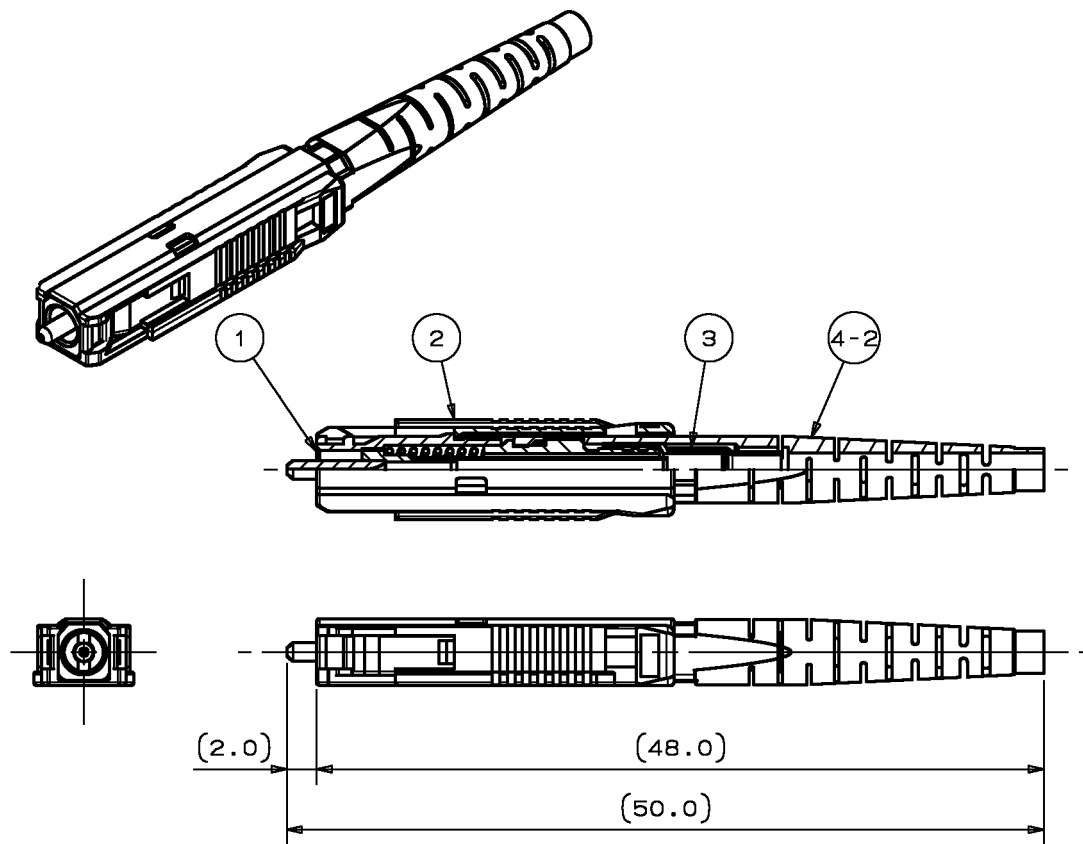


note 1: This drawing shows the tentatively assembled condition. In practice, the connector plug is not assembled like this.

note 2: This drawing does not include the cap.

Unit: mm

Figure 1.1 SMU-PN Connector Plug for  $\varnothing$  0.9 mm cord



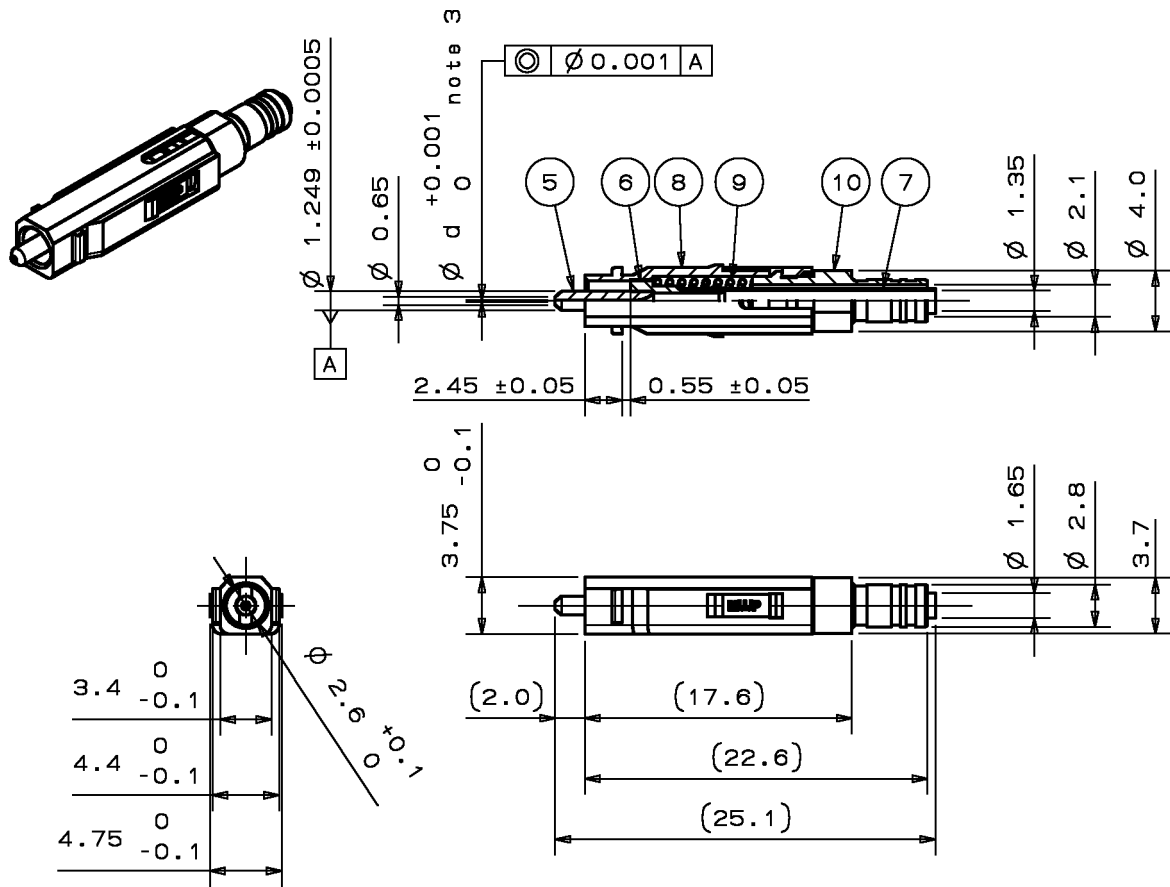
note 1: This drawing shows the tentatively assembled condition. In practice, the connector plug is not assembled like this.

note 2: This drawing does not include the cap.

Unit: mm

Figure 1.2 SMU-PN Connector Plug for  $\varnothing$  2.0 mm cord

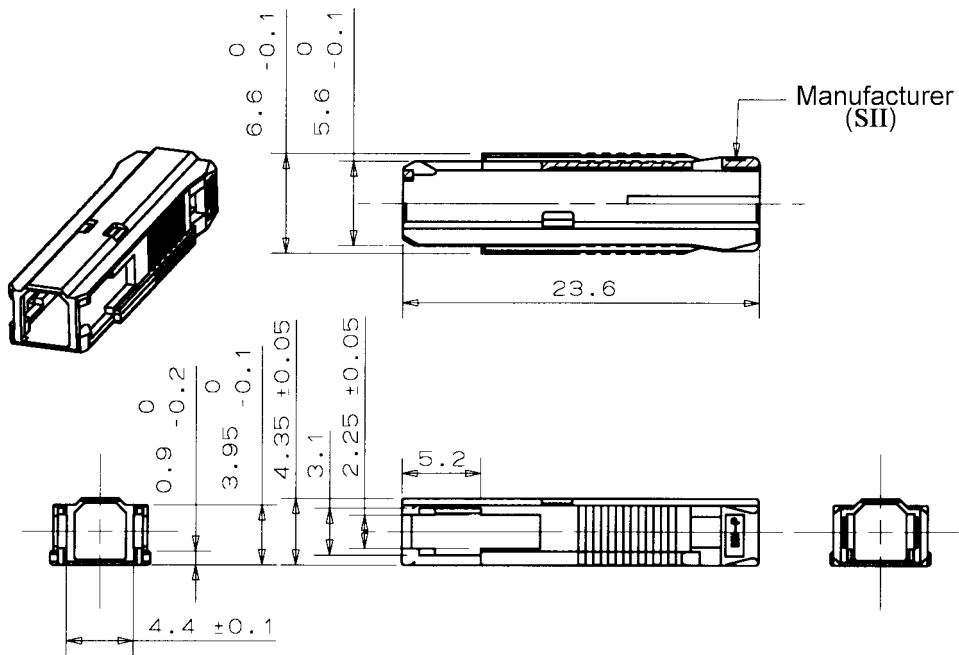




note 3: Ferrule hole inner diameter (d) shown in Table 1.

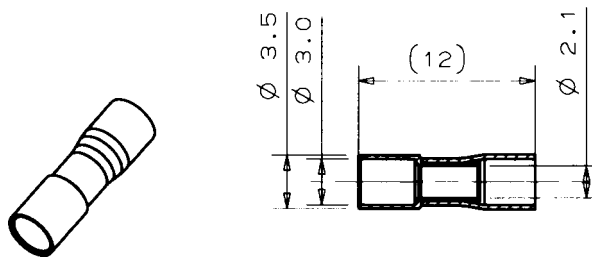
Unit: mm

Figure 2 #1 Main Body



Unit: mm

Figure 3 #2 Grip



Unit: mm

Figure 4 #3 Crimping ring for Ø 2.0 mm cord

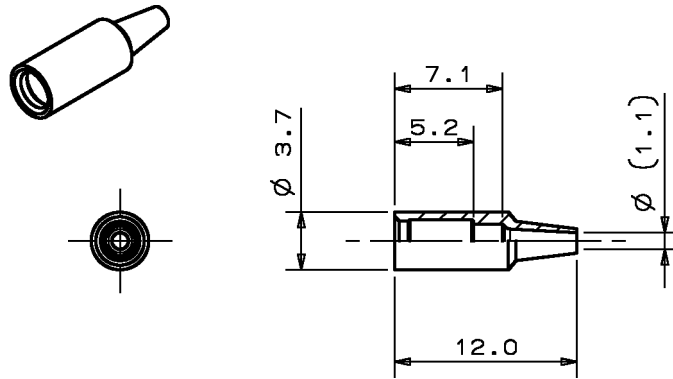


Figure 5 #4-1 Hood for  $\varnothing$  0.9 mm cord

Unit: mm

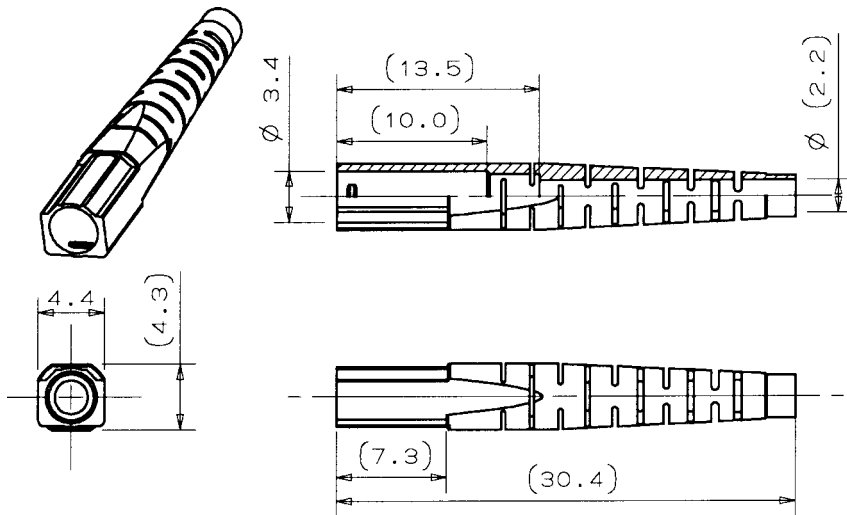


Figure 6 #4-2 Hood for  $\varnothing$  2.0 mm cord

Unit: mm

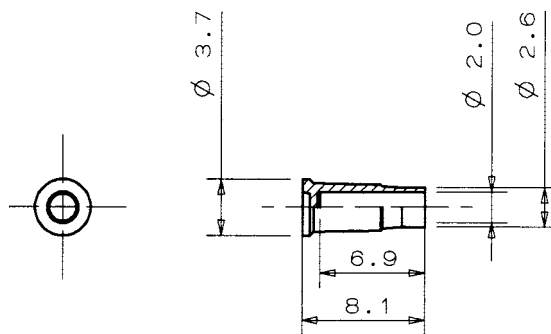


Figure 7 #11 Cap

Unit: mm