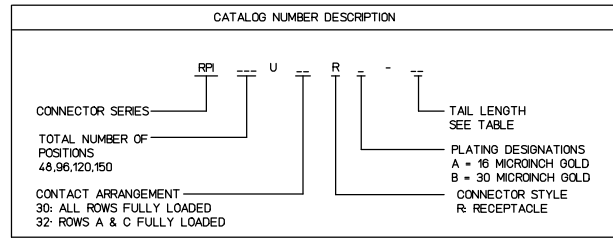


CATALOG NUMBER	N NUMBER OF POSITIONS	A	B MAX	C	D $\pm 0.04$ $\pm 0.10$
RPI48U__R__	48	1.900 48.26	2.401 59.37	1.500 38.10	1.742 44.26
RPI96U__R__	96	3.500 88.90	3.701 94.00	3.100 78.74	3.342 84.89
RPI120U__R__	120	4.300 109.22	4.501 114.33	3.900 99.05	4.142 105.21
RPI150U__R__	150	5.300 134.62	5.501 139.73	4.900 124.46	5.142 130.61

TAIL LENGTH	L
RPL__U__R__-1	.108 $\pm 0.008$ 2.74 $\pm 0.15$
RPL__U__R__-2	.172 $\pm 0.008$ 4.37 $\pm 0.15$
RPL__U__R__-3	.138 $\pm 0.008$ 3.51 $\pm 0.15$
RPI20U__R__-11	.108 $\pm 0.015$ 2.74 $\pm 0.38$



NOTES: UNLESS OTHERWISE SPECIFIED:

MATERIAL:

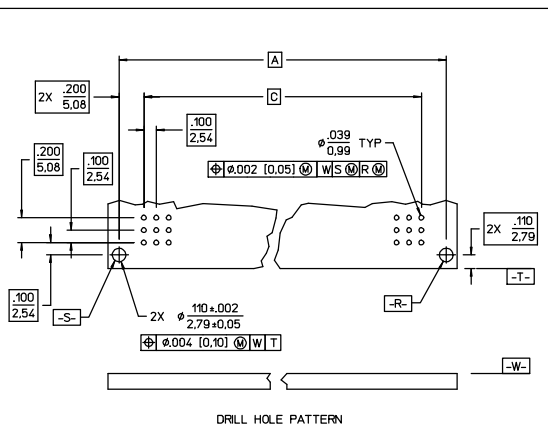
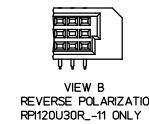
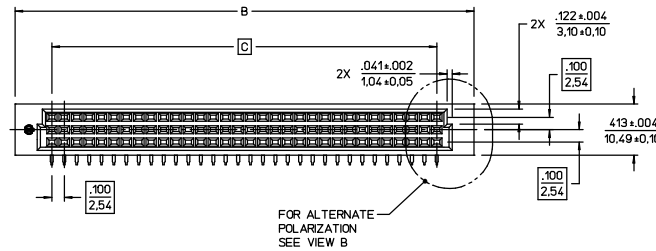
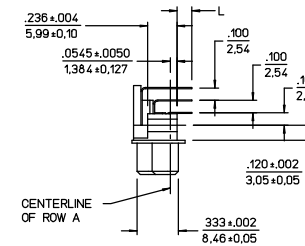
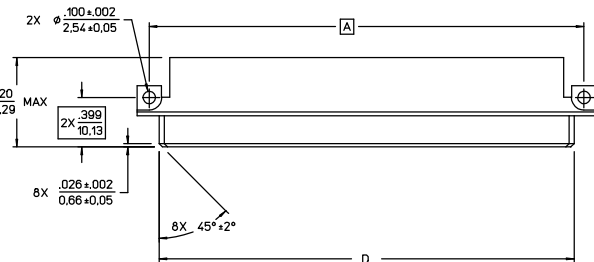
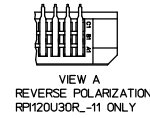
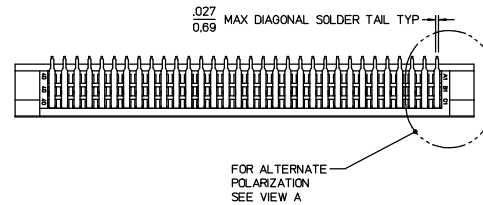
BODY: GLASS REINFORCED POLYESTER UL94-0, COLOR BLACK.

CONTACTS: COPPER ALLOY

CONTACT FINISH:

A PLATING - 16 MICRINCHES [4 MICRONS] MIN GOLD IN CONTACT AREA AND 50 MICRINCHES [1.27 MICRONS] MIN TINLEAD ALLOY ON CONTACT TAILS. 50 MICRINCHES [1.27 MICRONS] MIN NICKEL UNDERPLATE ALL OVER.

B PLATING - 30 MICRINCHES [0.76 MICRONS] MIN GOLD IN CONTACT AREA AND 200 MICRINCHES [5.00 MICRONS] MIN TINLEAD ALLOY ON CONTACT TAILS. 50 MICRINCHES [1.27 MICRONS] MIN NICKEL UNDERPLATE ALL OVER.



REV	DESCRIPTION	BY	CHKD	DATE
M	REV PER ECR V20210	TAB	MGR	01-28-02
L	REV PER ECR V01933	TAB	TAB	08-01-00
9	TO TBL, ADDED CAT. NO. RPI120U30R__11 & FOR "L" DIM RELOCATED +006 TOL. FROM "L" TO EACH DIM IN CAT DESCRIP. FOR DESIGN VAR. "-" WAS "+". ADDED ALTERNATE VIEWS A & B (ECN3461)	DET	JAT	02-23-96
8	ADDED A PLATING OPTION, MOVED HOT STAMP PRINTING (ECN 3086)	DHR	JK	09-26-94
7	REVISED & REDRAWN ON CAD SEE REV REF PRINT (ECN 1706)	JW	JAM	04-22-91

REVERSED P.I. RIGHT ANGLE P.C.B. CONNECTOR

LINEAR MEASURE:	INCH	INCH (mm)	DRWN	BC	01-16-84
THIRD ANGLE PROJECTION	DWG RELEASED TO CENTRAL FILE 05-06-91		CHKD	JH	
	DON 333		DSGN	JH	12-06-84
	© FRAMATOME CONNECTORS USA INC.1996		MKT	RPC	12-11-84
			OC		
			DRAWING SCALE	2:1	
			DRAWING NO.	REV	
			SE88684	M	
			SHEET	1 OF 1	

REFERENCE:  
SE88685, RPL\_\_U30P\_\_

SUPERSEDES:  
SE88684-6

NO OF DECIMAL PLACES IN INCHES	INCH (mm)
ONE PLACE	±.1 (.3)
TWO PLACES	±.02 (.05)
THREE PLACES	±.005 (.013)

ANGLES ±1°

